



Series  
CIF Combustion Flow meter

For Low Pressure Gas Flow

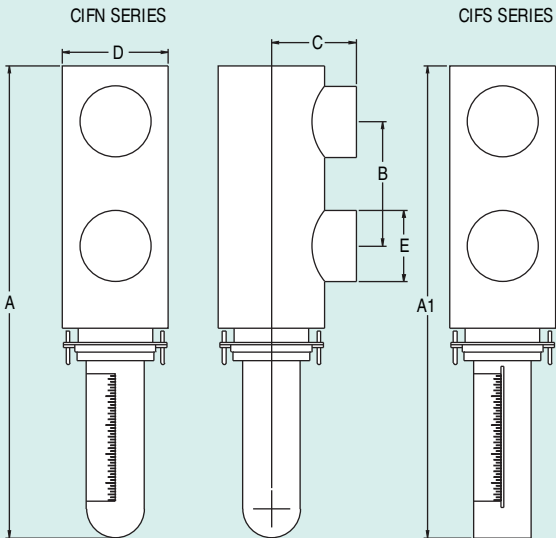
Flow



CIFN



CIFS



FNPT	A	A1	B	C	D	E
3/4"	18-5/32 [461.17]	18-29/32 [480.22]	7-57/64 [200.42]	2-13/64 [55.96]	2-1/2 [63.5]	1-29/64 [36.91]
2"	26-3/8 [699.93]	26-31/32 [685]	12-41/64 [321.07]	3-13/32 [86.52]	3-1/2 [88.9]	2-3/4 [69.85]
3"	31-13/64 [792.56]	32-13/64 [817.96]	14-41/64 [371.87]	4-57/64 [124.22]	4-3/4 [120.65]	4 [101.6]
4"	33-37/64 [852.89]	34-37/64 [878.29]	16-9/64 [409.97]	6 [152.4]	6 [152.4]	5 [127]

The Series CIF Combustion Flowmeters are tough, simple and accurate meters for low pressure, low-density gas measurement. They have a verifiable accuracy of  $\pm 2\%$  for combustion gases, annealing atmospheres, vacuum flows, digesters and gas mixing. They can be disassembled quickly without the meter being removed from the pipeline for easy cleaning. Series CIF Combustion Flowmeters are extremely robust constructed of nickel plated steel or optional stainless steel with maximum pressure ratings of 150psig (10.34 bar) and temperature ratings of 600°F (315°C).

Series	CIFN CIFS	Ni Plated Steel Body All Stainless Steel
Range	-XX	See Range/ Connection Chart (add Range code to Series designator for model number).

SPECIFICATIONS

**Service:** Compatible gases.

**Wetted Materials:** CIFN: Nickel plated steel body, 18-8 stainless steel, buna-N O-rings, Polysulfone sight tube; CIFS: 18-8 stainless steel, buna-N O-rings, 18-8 stainless steel sight tube.

**Temperature Limits:** 600°F (315°C).

**Pressure Limits:** 150 psig (10 bar).

**Accuracy:**  $\pm 2\%$  of reading for dry air at 14.7psig (1bar), 70°F (21°C).

**Repeatability:**  $\pm 1/4\%$  of indicated flow rate

**Process Connections:** 3/4" and 2" female NPT, Optional 3" and 4" female NPT.

**Weight:** 8 lbs (6.4 kg) for 3/4" and 25 lbs (11.4 kg) for 2".

AVAILABLE RANGES

Range Code	Range	Connection (FNPT)	Range Code	Range	Connection (FNPT)
-00	0.8-20.0 SCFH Air	3/4" NPT	-11	20-500 SCFH Air	2" NPT
-01	1.0-30.0 SCFH Air	3/4" NPT	-12	30-750 SCFH Air	2" NPT
-02	2.0-50.0 SCFH Air	3/4" NPT	-13	40-1000 SCFH Air	2" NPT
-03	3.0-75.0 SCFH Air	3/4" NPT	-14	50-1200 SCFH Air	2" NPT
-04	4.0-100 SCFH Air	3/4" NPT	-15	60-1500 SCFH Air	2" NPT
-05	6.0-150 SCFH Air	3/4" NPT	-16	80-2000 SCFH Air	2" NPT
-06	10-250 SCFH Air	3/4" NPT	-17	100-2500 SCFH Air	2" NPT
-07	10-350 SCFH Air	3/4" NPT	-18	120-3000 SCFH Air	2" NPT
-08	20-500 SCFH Air	3/4" NPT	-19	160-4000 SCFH Air	2" NPT
-09	30-750 SCFH Air	3/4" NPT	-20	200-5000 SCFH Air	2" NPT
-10	40-1000 SCFH Air	3/4" NPT			