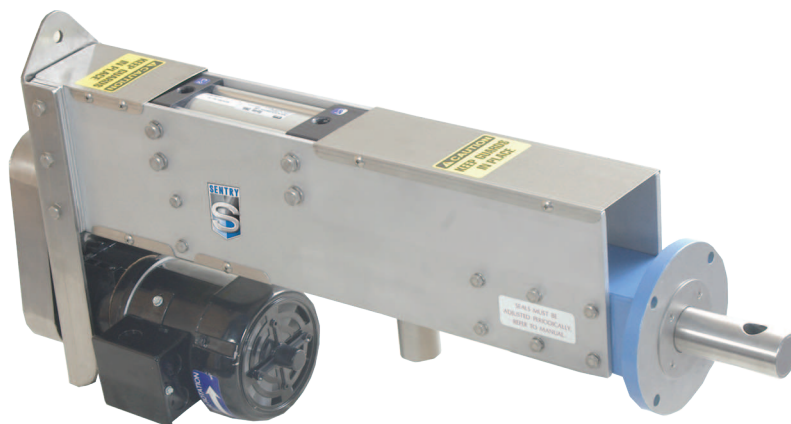




*The
Sampling
Connection*



MODEL RB AUTOMATIC SAMPLER

Automatic Sampler for Free-Flowing and Non-Free-Flowing Materials

Features

- Close tolerance (0.003" / 0.0008 cm) between the sample tube and auger allows product cleanout
- Tube retracts from the line so there is no restriction in the product flow
- Product contact materials are 304 stainless steel and Teflon® seals

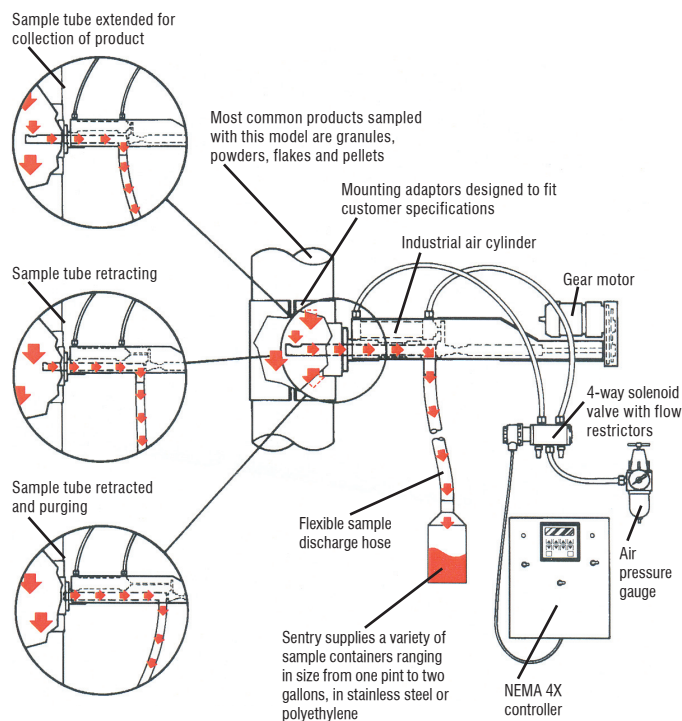
Options

- Custom mounting adapters for round, conical, angular and other configurations
- Pressurized containers for pneumatic lines up to 15 psig
- Custom construction materials
- Available in stroke lengths from 4" / 10 cm to 8" / 20.3 cm
- Nickel-impregnated Teflon® for a non-stick surface
- Hardening treatments to protect against wear and abrasion

Description

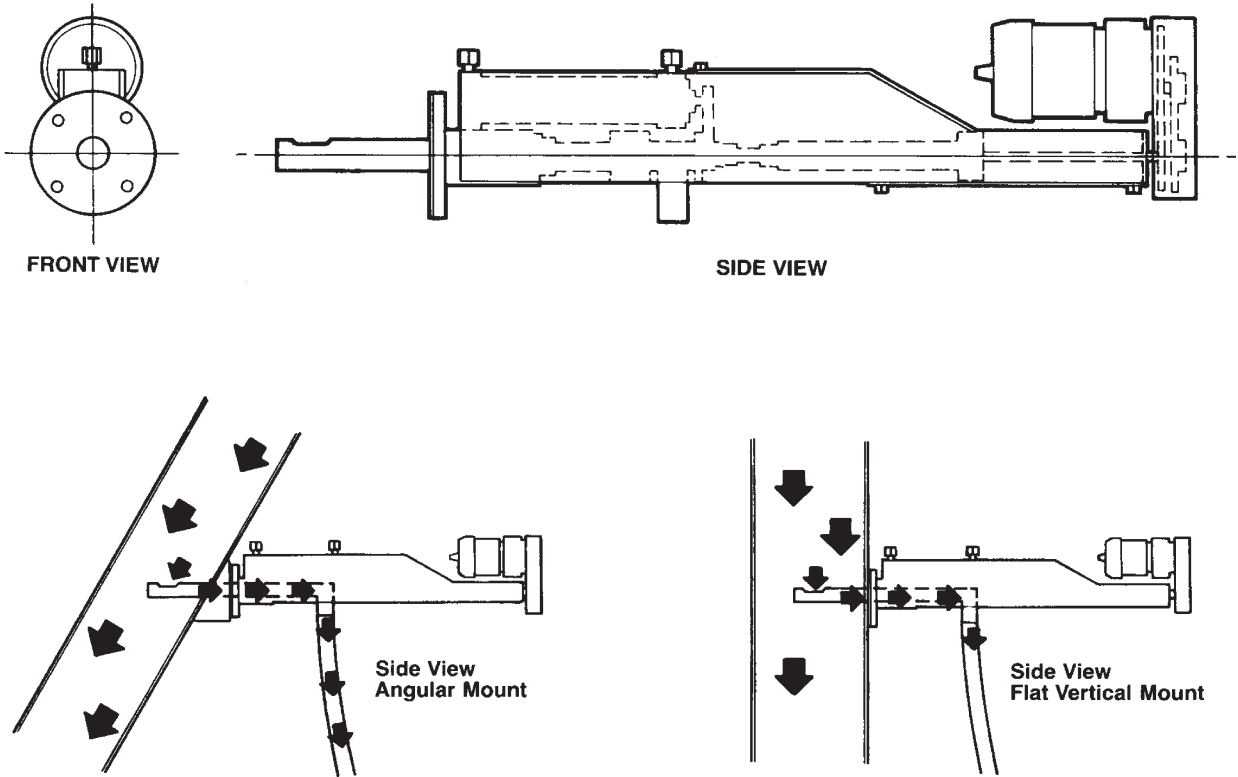
The Model RB is designed for automatic strip sampling of free-flowing and non-free-flowing materials (granules, powders, flakes and pellets) from spouts, hoppers, transfer chutes and pneumatic conveying lines up to 15 psig. Allows product sample to be continuously discharged while sample tube is fully extended.

The Model RB samples when a solenoid-controlled air cylinder extends a slotted sampling tube into the process line. A representative sample collects by a gearmotor-driven auger to the discharge point.



**MODEL RB
AUTOMATIC SAMPLER**

MODEL RB TECHNICAL DATA



SPECIFICATIONS

Basic Electrical Requirements.	115 VAC, single phase, 60 Hz; control box fused to 2 amps; optional 220 VAC, single phase, 50/60 Hz.;
	garmotor – 1/6 hp or 1/15 hp, 220 VAC, single phase, 50/60 Hz @30 rpm;
	explosion-proof – 1/20 hp, 115 VAC, single phase, 60 Hz 92:1 ratio @19 rpm;
Air Requirements	80 psig, 1.5 cfm per cycle
Quantity of Sample	determined by flow rate, aperture size and time in line
Product Size	10 micron to 1/4" / 6 mm; larger sizes upon request
Recommended Location of Sampler	vertical gravity lines
Suggested Connection to Collection Point.	rigid metal or flexible tubing to a collection container or multi-position collection cabinet
Materials of Construction	aluminum housing and stainless steel sample tube
Temperature Range	up to 250° F / 121° C

⚠WARNING

It is solely the responsibility of the end-user, through its own analysis and testing, to select products and materials suitable for their specific application requirements, ensure they are properly installed, safely applied, properly maintained, and limit their use to their intended purpose. Improper selection, installation, or use may result in personal injury or property damage.



SENTRY EQUIPMENT CORP
PO Box 127
Oconomowoc, WI 53066 USA
Phone: 262-567-7256
Fax: 262-567-4523
E-mail:
sales@sentry-equip.com
Website:
www.sentry-equip.com

For further information, contact:

The Sampling Connection