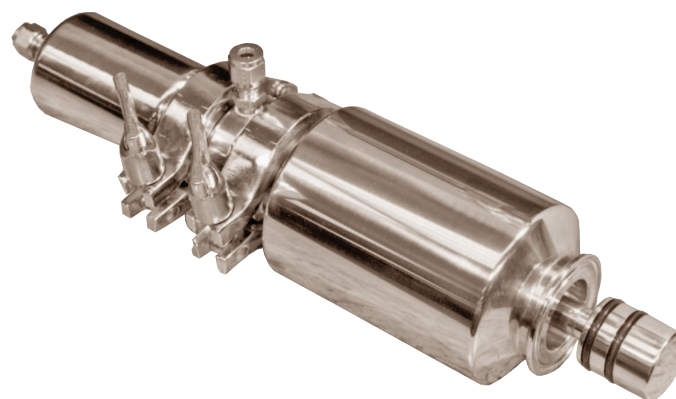




*The
Sampling
Connection*



ISOLOK® SERIES MSC AUTOMATIC SAMPLER

Automatic Sampler for Medium Viscosity Sanitary Products

Features

- Samples medium viscosity materials and discharges them by gravity
- Collects a fixed sample volume of 14 cc per cycle
- Conformant to 3-A Sanitary Standards through third party verification
- Ideal for liquids or slurries up to 1,000 centipoise

Options

- Port closures
- Line adapters
- Several types of containers
- Sampler enclosures (with or without heater)
- Sample heating or refrigeration
- Optional materials of construction and seal choices

Description

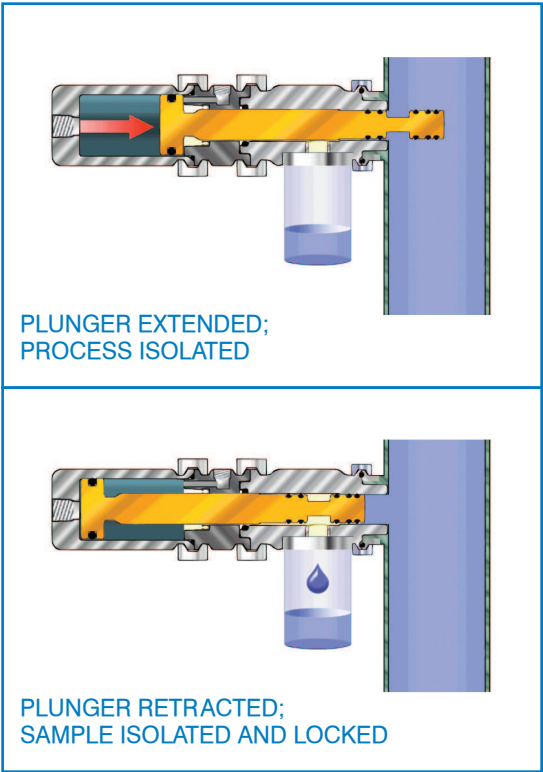
The ISOLOK® MSC series of samplers enable the collection of accurate samples of medium viscosity products such as cream or single-strength orange juice. The MSC delivers a fixed volume of sample with each cycle and includes direct mounting of wide-mouth labware plastic sample collection bottles (available in a variety of sizes). All metal parts are type 316 stainless steel with a polished finish. The sampler mounts onto the process line using a 2" Tri-Clamp ferrule mount held with a clamp and gasket. All product-contact seals are FDA-recognized elastomer compounds selected to meet application conditions. The series is available with a 1-1/2" bore or a 2-3/8" bore air cylinder. Dynamic cylinder seals are Buna-N.

Compressed air drives the sampler by forcing the plunger to reach into the process to capture a fixed volume of the material. Compressed air then acts on the opposite side of the piston to retract the plunger. Process line pressure assists in closing the sample annulus, forcing the material into the attached sample container. The operator is isolated from the process at all times by the sampler's seal design and the sample captured in the container is "locked out" from external influences.

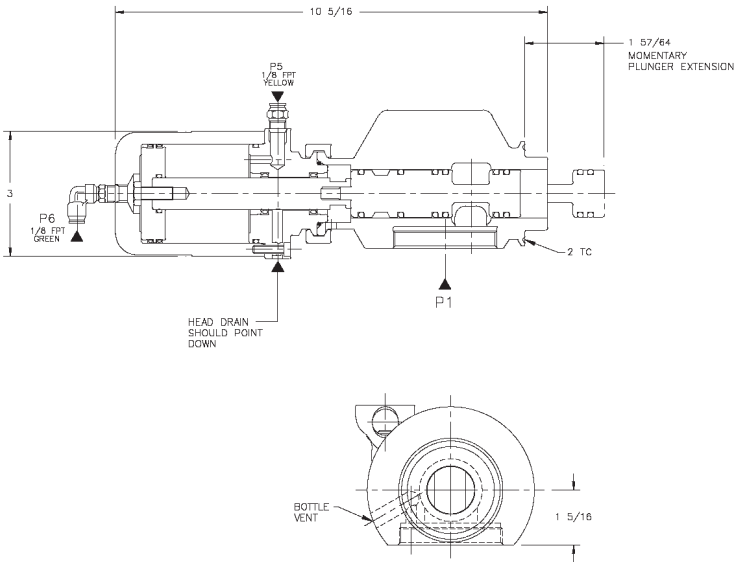


ISOLOK® SERIES MSC SAMPLER

SAMPLING PROCESS



ISOLOK® MSC TECHNICAL DATA



SPECIFICATIONS

Sample Volume per Cycle	max. 14 cc / 0.85 cu. in.
Basic Electrical Requirements	115 VAC, single phase, 50/60 Hz
Line Mounting Options	Tri-clamp or custom
Compressed Air Requirements	60 psig minimum
Materials of Construction	316 stainless steel
Actuator and Static Seals	TFE or Viton®
Plunger Seals	Buna-N, Viton® or custom
Overall Dimensions, length x diameter	10.3" / 26 cm x 4" / 10 cm
Net weight, not including controller or accessories	16.6 lbs. / 7.5 kg

⚠ WARNING

It is solely the responsibility of the end-user, through its own analysis and testing, to select products and materials suitable for their specific application requirements, ensure they are properly installed, safely applied, properly maintained, and limit their use to their intended purpose. Improper selection, installation, or use may result in personal injury or property damage.



SENTRY EQUIPMENT CORP

PO Box 127
Oconomowoc, WI 53066 USA
Phone: 262-567-7256
Fax: 262-567-4523

E-mail:
sales@sentry-equip.com

Website:
www.sentry-equip.com

For further information, contact:

The Sampling Connection