



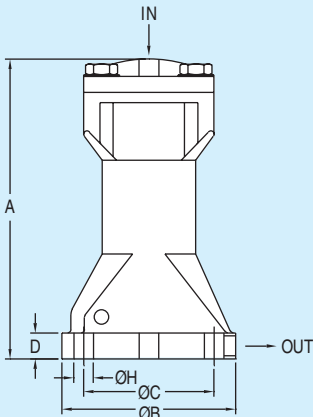
Series  
IPV

# Air Hammer

Single Impacting Type



Model Number	A	øB	øC	D	øH	Connection
IPV-1	5.43" (138 mm)	3.15" (80 mm)	2.36" (60 mm)	0.47" (12 mm)	0.35" (9 mm)	1/8"
IPV-2	6.54" (166 mm)	3.94" (100 mm)	2.95" (75 mm)	0.63" (16 mm)	0.43" (11 mm)	1/8"
IPV-3	8.19" (208 mm)	5.51" (140 mm)	4.13" (105 mm)	0.63" (16 mm)	0.59" (15 mm)	1/8"
IPV-4	10.56" (269 mm)	6.77" (172 mm)	5.51" (140 mm)	0.94" (24 mm)	0.75" (19 mm)	1/4"



Level

**Series IPV Air Hammer** (single impact model) focuses on a limited target. Other equipment of the target is minimally affected by it. It is often applied onto a pipe or clean elbow in a tank filled with humidity or low specific gravity material.

### HOW IT OPERATES

The IPV series air hammer contains a powerful magnet inside the hammer. The hammer and magnet are tightly closed before activation. As the inlet air pressure gets higher than the force, this tightens the hammer and magnet. The hammer and magnet will separate and cause more strength for impact power. The spring will bring the hammer back to the initial position automatically after the impact. By doing this, the air pressure will be released and the strength of the air pressure will be delivered to the target impact container. It will help to smooth the flow and prevent accumulation inside the container.

### SPECIFICATIONS

**Temperature Limit:** 212°F (100°C).

**Noise Level Range:** 60-75 dBA.

**Supply Pressure:** 43.5 to 87 psi (3 to 6 bar).

**Air Consumption:** See model chart.

**Air Connection:** 1/8" BSPT female with 1/8" NPT female adapter on IPV-1, IPV-2 and IPV-3. 1/4" BSPT female adapter with 1/4" NPT female adapter on IPV-4.

### FEATURES

- One impact wave caused by one shot.
- High strength aluminum structure.
- Impact force and interval timing can be set based on needs.
- Magnetic hammer stores magnetic strength to increase the piston's impact power.

MODEL NUMBER	
IPV-1	
IPV-2	
IPV-3	
IPV-3	

MODEL NO.	Impulse	Air Consumption	Weight
	lbf.s (N.S)	in³ (l) per stroke	lb (kg)
IPV-1	.225 (1.0)	1.71 (0.028)	2.43 (1.1)
IPV-2	.630 (2.8)	5.0 (0.082)	3.97 (1.8)
IPV-3	1.66 (7.4)	14.0 (0.228)	8.82 (4.0)
IPV-4	2.81 (12.5)	27.8 (0.455)	18.52 (8.4)