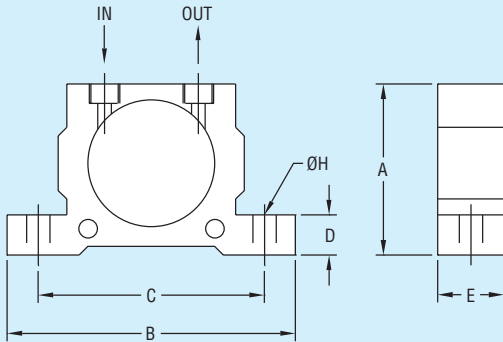




Series
BPV

Pneumatic Ball Vibrator

Small Size and Light Weight

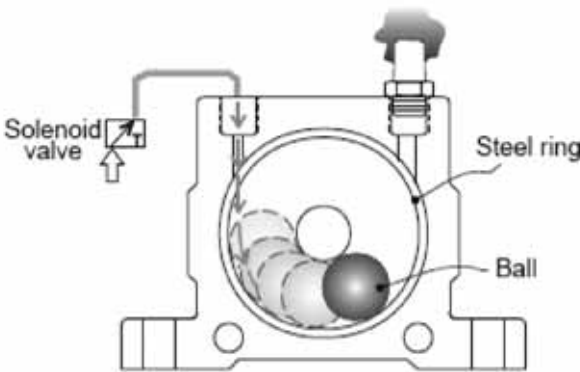


Model Number	A	B	C	D	E	H	Connection
BPV-1	2.01" (51 mm)	3.39" (86 mm)	2.68" (68 mm)	0.47" (12 mm)	0.79" (20 mm)	0.79" (ø7 mm)	1/8"
BPV-2	2.64" (67 mm)	4.45" (113 mm)	3.54" (90 mm)	0.63" (16 mm)	0.94" (24 mm)	0.94" (ø9 mm)	1/4"
BPV-3	2.64" (67 mm)	4.45" (113 mm)	3.54" (90 mm)	0.63" (16 mm)	0.94" (24 mm)	0.94" (ø9 mm)	1/4"
BPV-4	3.27" (83 mm)	5.04" (128 mm)	4.09" (104 mm)	0.63" (16 mm)	1.30" (33 mm)	1.30" (ø9 mm)	1/4"
BPV-5	3.27" (83 mm)	5.04" (128 mm)	4.09" (104 mm)	0.63" (16 mm)	1.30" (33 mm)	1.30" (ø9 mm)	1/4"
BPV-6	4.06" (103 mm)	6.30" (160 mm)	5.12" (130 mm)	0.79" (20 mm)	1.73" (44 mm)	1.73" (ø11 mm)	3/8"

Series BPV Pneumatic Ball Vibrators are the best choice for bridge-break in thin walls and small tanks. This model can be used in vibrating separators, vibrating conveyors, and against electroplating build-up. It can also be used on material compacted while packing or sand compacted while molding.

HOW IT OPERATES

The aluminum body is equipped with a steel ring and ball inside that is tightly closed by plastic side covers. Vibration is caused when the internal ball, pushed by compressed air, runs in a rotary motion to produce centrifugal force.



SPECIFICATIONS

Temperature Limits: 212°F (100°C).

Noise Level: 75-95 dBA.

Supply Pressure: 29 to 87 psi (2 to 6 bar).

Air Consumption: See model chart.

Air Connections: 1/4" BSPT female with 1/4" NPT female adapter on BPV-1, BPV-2, BPV-3, BPV-4, BPV-5. 3/8" BSPT female with 3/8" NPT female adapters on BPV-6. Also includes muffler for exhaust port.

Housing Material: Aluminum.

FEATURES

- The body is made of high strength aluminum alloy.
- Small in size and light-weight.
- Can be used in high humidity or dusty working areas.
- Frequency and amplitude of vibration can be adjusted as needed.

MODEL NUMBER

BPV-1
BPV-2
BPV-3
BPV-4
BPV-5
BPV-6

MODEL NO.	Frequency (V.P.M.) Pressure Input			Force lbf (N) Pressure Input			Air Consumption cfm (l/min) Pressure Input			Weight lb (kg)
	29 psi (2 bar)	58 psi (4 bar)	87 psi (6 bar)	29 psi (2 bar)	58 psi (4 bar)	87 psi (6 bar)	29 psi (2 bar)	58 psi (4 bar)	87 psi (6 bar)	
BPV-1	22500	28000	34000	56 (250)	106 (470)	160 (710)	3.25 (92)	5.30 (150)	7.06 (200)	.31 (0.14)
BPV-2	15000	18500	22500	72 (320)	124 (550)	195 (870)	3.32 (94)	5.58 (158)	7.95 (225)	.57 (.26)
BPV-3	13000	17000	19500	101(450)	180 (800)	247 (1100)	4.31 (122)	7.06 (200)	9.89 (280)	.66 (.30)
BPV-4	10500	14500	16500	162 (720)	274 (1220)	387 (1720)	4.59 (130)	8.12 (230)	12.01 (340)	1.2 (.53)
BPV-5	9200	12200	14000	209 (930)	353 (1570)	461 (2050)	5.65 (160)	10.24 (290)	15.01 (425)	1.4 (.63)
BPV-6	7800	9700	12500	339 (1510)	555 (2470)	722 (3210)	7.59 (215)	13.24 (375)	20.13 (570)	2.54 (1.15)

V.P.M. = vibrations per minute