

PQE ELECTROPOLISHED TUBES AND FITTINGS

Stainless steel tube system for Ultra Clean Gas Systems

PQE products are suitable for transport of Ultra High Purity Gas Systems in semiconductor and microchip manufacturing using corrosive or hazardous gases. Other examples are high purity oxygen. Tubes and Fittings are electropolished, clean room treated and packed to guarantee a high quality until the final installation.



Products

Stainless steel tubes, tees, elbows, reducers and caps.

- Outside diameter: 6,00 – 152,40 mm
- Available as coaxial system

Standard

Steel grade: EN 1.4404/1.4435/1.4432, ASTM 316L

Seamless: EN 10216-5 TC1, ASTM A269/A270, ASME SA213

Welded: EN 10217-7 TC1, ASTM A270/A269, ASME SA 249

Tolerances: ISO 1127 D4/T3, D3/T3, D2/T3, D2/T2, ASTM A269/A270

Specification

- Raw material
 - Seamless and welded tubes and fittings
 - Bright annealed
- Electropolishing
 - Electropolished inside in accordance with SP3-039/40
- Surface roughness
 - Ra inside 0,25µm (10µinch)
- Cleanroom treated in accordance with SP3-060
 - Class ISO 4/5, FED 209 10/100
 - Rinsing with de-ionized water 18 MΩcm
 - Dried with hot nitrogen gas
 - End capped and protected in double polyethylene bags



Certificate

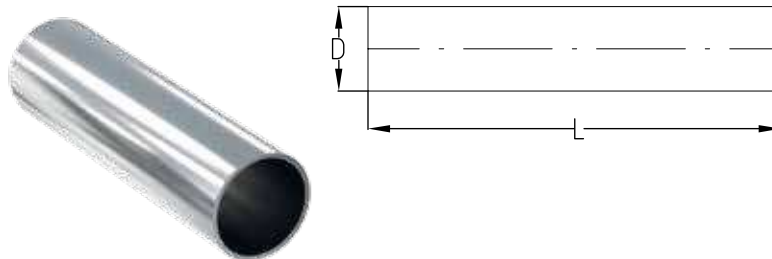
Certified in accordance with the following system (quality) ISO 9001, (environment) ISO 14001 och (Occupational healthy and safety) OHSAS 18001.

Manufacturing

- Raw material manufactured only from selected and approved suppliers according to specifications.
- Electropolishing processes and machines are developed and built with technology.
- Final cleaning with operation inside clean room using 70° C hot de-ionized water. Drying with filtered heated nitrogen.
- Each sleeve is marked with a unique label that can be traced back to the certificate.
- A clean nylon film is placed over each end prior to ends are capped. Finally products are packed in double polyethylene bags.

Advantages

- Unique quality and service due to an integrated value chain.
 - Receiving inspection and a large raw material stock to safeguard stable deliveries and short project lead time.
 - Electropolishing, cleaning, packing and inspection is conducted in the same facility creating stability in quality and short lead time.
 - Daily deliveries from our stock of finished products.
 - PQE products are end treated and ready for orbital welding.
 - Direct sales from mill for quick service and short response time.



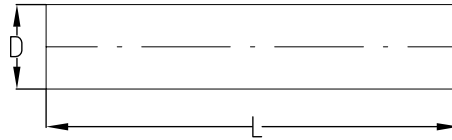
(L) Nominell length 6000 mm

DN	(D) x wall (mm)	Weight (Kg/m)	Pressure ¹ (Bar)	Article number	Product name	Execution ² S/W	Stock ³ ○ / ●
8	6,35 x 0,89 mm 1/4 x 0.035"	0,123	331	0100118	PQE	S	●
10	9,53 x 0,89 mm 3/8 x 0.035"	0,195	210	0100278	PQE	S	●
15	12,70 x 1,24 mm 1/2 x 0.049"	0,353	221	0100558	PQE	S	●
20	19,05 x 1,65mm 3/4 x 0.065"	0,719	194	0100893	PQE	S	●
25	25,40 x 1,65mm 1 x 0.065"	0,974	182	0101170	PQE	S	●
40	38,1 x 1,65mm 1 1/2 x 0.065"	1,500	93	0131480	PQE	W	●
50	50,8 x 1,65mm 2 x 0.065"	2,030	69	0131680	PQE	W	●
65	63,5 x 1,65mm 2 1/2 x 0.065"	2,500	38	0131780	PQE	W	○
80	76,2 x 1,65mm 3 x 0.065"	3,056	46	0131820	PQE	W	●
100	101,60 x 2,11mm 4 x 0.083"	5,210	31	0132000	PQE	W	●
150	152,4 x 2,77mm 6 x 0.109"	10,287	27	0132055	PQE	W	○

¹) Maximum operating pressure at maximum 20 C° according to EN 13480-3 ²) Execution: S = seamless tubes W = manufactured from welded tubes
³) ○ = Made to order, ● = Stock standard product

TUBING - METRIC

Rometec srl - www.rometec.it - Rometec srl - www.rometec.it - Rometec srl - www.rometec.it



(L) Nominell length 6000 mm

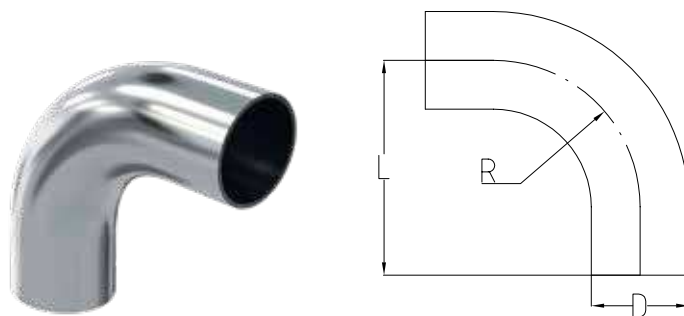
(D) x wall (mm)	Weight (Kg/m)	Pressure ¹ (Bar)	Article number	Product name	Execution ² S/W	Stock ³ ○ / ●
6,00 x 1,00 mm	0,124	462	0100040	PQE	S	●
8,00 x 1,00 mm	0,174	333	0100200	PQE	S	●
10,00 x 1,00 mm	0,223	261	0100360	PQE	S	●
12,00 x 1,00 mm	0,273	214	0100440	PQE	S	●
18,00 x 1,50 mm	0,615	234	0100810	PQE	S	●
28,00 x 1,50 mm	0,987	146	0101321	PQE	S/W	●

¹⁾ Maximum operating pressure at maximum 20 C° according to EN 13480-3 ²⁾ Execution: S = seamless tubes W = manufactured from welded tubes
³⁾ ○ = Made to order, ● = Stock standard product

Rometec srl - www.rometec.it - Rometec srl - www.rometec.it - Rometec srl - www.rometec.it

ELBOW 90° - IMPERIAL

Rometec srl - www.rometec.it - Rometec srl - www.rometec.it - Rometec srl - www.rometec.it



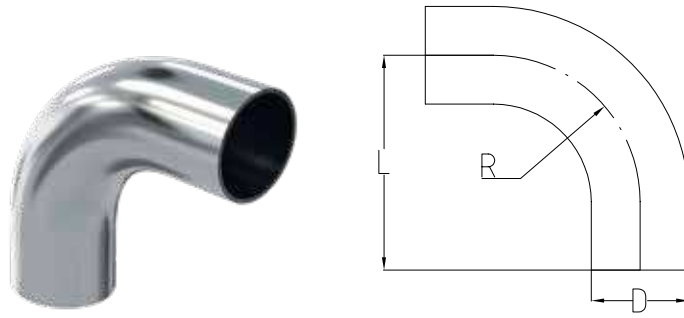
DN	(D) x wall (mm)	Weight (Kg/m)	Pressure ¹ (Bar)	(L) Length (mm)	(R) Radius (mm)	Article number	Product name	Execution ² S/W	Stock ³ ○ / ●
8	6,35 x 0,89 mm 1/4 x 0.035"	0,012	299	67	26	1110120	PQE	S	●
10	9,53 x 0,89 mm 3/8 x 0.035"	-	-	-	-	111280US	PQE	S	○
15	12,70 x 1,24 mm 1/2 x 0.049"	0,044	200	76	29	1110560	PQE	S	●
20	19,05 x 1,65 mm 3/4 x 0.065"	0,087	153	76	29	1110880	PQE	S	●
25	25,40x1,65 mm 1 x 0.065"	0,182	113	76	38	1111160	PQE	S	●
40	38,1 x 1,65 mm 1 1/2 x 0.065"	0,249	44	95	57	1131480EUS	PQE	W	○
50	50,8 x 1,65 mm 2 x 0.065"	0,424	33	121	76	1131680EUS	PQE	W	○
65	63,5 x 1,65 mm 2 1/2 x 0.065"	0,596	31	140	95	1131780NL	PQE	W	○
80	76,2 x 1,65 mm 3 x 0.065"	0,820	25	159	114	1131820EUS	PQE	W	○
100	101,60 x 2,11 mm 4 x 0.083"	1,776	24	203	152	1132000EUS	PQE	W	○
150	152,4 x 2,77 mm 6 x 0.109"	4,998	20	292	229	1132055US	PQE	W	○

¹⁾ Maximum operating pressure at maximum 20 C° according to EN 13480-3 ²⁾ Execution: S = seamless tubes W = manufactured from welded tubes
³⁾ ○ = Made to order, ● = Stock standard product

Rometec srl - www.rometec.it - Rometec srl - www.rometec.it - Rometec srl - www.rometec.it

ELBOW 90° - METRIC

Rometec srl - www.rometec.it - Rometec srl - www.rometec.it - Rometec srl - www.rometec.it



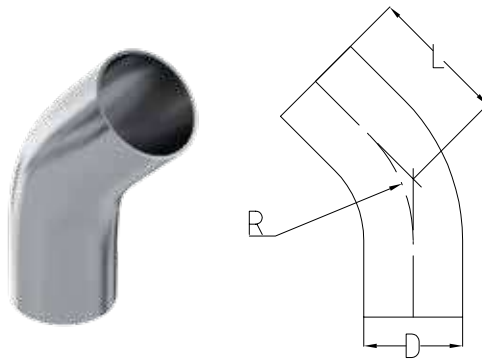
(D) x wall (mm)	Weight (Kg/m)	Pressure ¹ (Bar)	(L) Length (mm)	(R) Radius (mm)	Article number	Product name	Execution ² S/W	Stock ³ ○ / ●
6,00 x 1,00 mm	-	-	-	-	-	PQE	S	○
8,00 x 1,00 mm	-	-	-	-	-	PQE	S	○
10,00 x 1,00 mm	-	-	-	-	-	PQE	S	○
12,00 x 1,00 mm	-	-	-	-	-	PQE	S	○
18,00 x 1,50 mm	-	-	-	-	-	PQE	S	○
28,00 x 1,50 mm	0,156	87	90	50	1111320	PQE	S/W	○

¹⁾ Maximum operating pressure at maximum 20 C° according to EN 13480-3 ²⁾ Execution: S = seamless tubes W = manufactured from welded tubes
³⁾ ○ = Made to order, ● = Stock standard product

Rometec srl - www.rometec.it - Rometec srl - www.rometec.it - Rometec srl - www.rometec.it

ELBOW 45° - IMPERIAL

Rometec srl - www.rometec.it - Rometec srl - www.rometec.it - Rometec srl - www.rometec.it



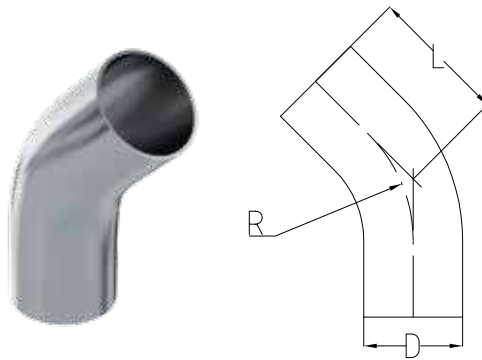
DN	(D) x wall (mm)	Weight (Kg/m)	Pressure ¹ (Bar)	(L) Length (mm)	(R) Radius (mm)	Article number	Product name	Execution ² S/W	Stock ³ ○ / ●
8	6,35 x 0,89 mm 1/4 x 0.035"	0,009	299	51	14	1110120	PQE	S	○
10	9,53 x 0,89 mm 3/8 x 0.035"	0,020	204	51	29	1110280US	PQE	S	○
15	12,70 x 1,24 mm 1/2 x 0.049"	0,045	200	57	27	1110560	PQE	S	●
20	19,05 x 1,65 mm 3/4 x 0.065"	0,092	153	57	29	1110880	PQE	S	●
25	25,40x1,65 mm 1 x 0.065"	0,157	113	57	38	1111160	PQE	S	●
40	38,1 x 1,65 mm 1 1/2 x 0.065"	0,194	44	64	57	1131480EUS	PQE	W	○
50	50,8 x 1,65 mm 2 x 0.065"	0,312	33	76	76	1131680EUS	PQE	W	○
65	63,5 x 1,65 mm 2 1/2 x 0.065"	0,435	33	86	95	1131780NL	PQE	W	○
80	76,2 x 1,65 mm 3 x 0.065"	0,569	27	92	114	1131820EUS	PQE	W	○
100	101,60 x 2,11 mm 4 x 0.083"	1,203	26	114	152	1132000EUS	PQE	W	○
150	152,4 x 2,77 mm 6 x 0.109"	3,318	21	159	229	1132055US	PQE	W	○

¹⁾ Maximum operating pressure at maximum 20 C° according to EN 13480-3 ²⁾ Execution: S = seamless tubes W = manufactured from welded tubes
³⁾ ○ = Made to order, ● = Stock standard product

Rometec srl - www.rometec.it - Rometec srl - www.rometec.it - Rometec srl - www.rometec.it

ELBOW 45° - METRIC

Rometec srl - www.rometec.it - Rometec srl - www.rometec.it - Rometec srl - www.rometec.it



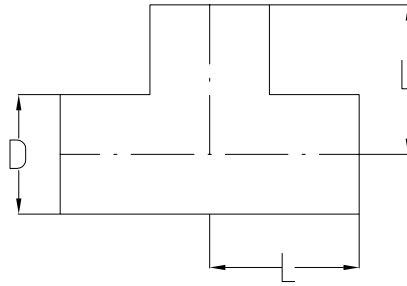
(D) x wall (mm)	Weight (Kg/m)	Pressure ¹ (Bar)	(L) Length (mm)	(R) Radius (mm)	Article number	Product name	Execution ² S/W	Stock ³ ○ / ●
6,00 x 1,00 mm	-	-	-	-	-	PQE	S	○
8,00 x 1,00 mm	-	-	-	-	-	PQE	S	○
10,00 x 1,00 mm	-	-	-	-	-	PQE	S	○
12,00 x 1,00 mm	0,019	175	36	26	1110440	PQE	S	○
18,00 x 1,50 mm	0,043	140	36	26	1110800	PQE	S	○
28,00 x 1,50 mm	0,118	87	50	50	1111320	PQE	S/W	○

¹⁾ Maximum operating pressure at maximum 20 C° according to EN 13480-3 ²⁾ Execution: S = seamless tubes W = manufactured from welded tubes
³⁾ ○ = Made to order, ● = Stock standard product

Rometec srl - www.rometec.it - Rometec srl - www.rometec.it - Rometec srl - www.rometec.it

EQUAL TEE - IMPERIAL

Rometec srl - www.rometec.it - Rometec srl - www.rometec.it - Rometec srl - www.rometec.it



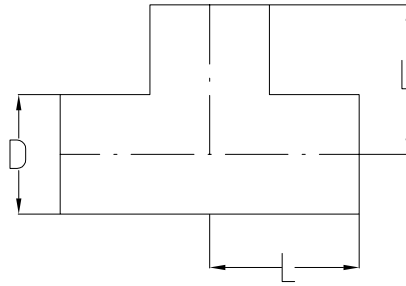
DN	(D) x wall (mm)	Weight (Kg/m)	Pressure ¹ (Bar)	(L) Length (mm)	Article number	Product name	Execution ² S/W	Stock ³ ○ / ●
8	6,35 x 0,89 mm 1/4 x 0.035"	0,011	215	45	1104120NL	PQE	S	●
10	9,53 x 0,89 mm 3/8 x 0.035"	0,025	123	45	1104280NL	PQE	S	●
15	12,70 x 1,24 mm 1/2 x 0.049"	0,055	131	48	1104560NL	PQE	S	●
20	19,05 x 1,65 mm 3/4 x 0.065"	0,110	111	51	1104880NL	PQE	S	●
25	25,40x1,65 mm 1 x 0.065"	0,175	75	54	1105160NL	PQE	S	●
40	38,1 x 1,65 mm 1 1/2 x 0.065"	-	-	-	-	PQE	W	○
50	50,8 x 1,65 mm 2 x 0.065"	0,454	30	73	1135680	PQE	W	○
65	63,5 x 1,65 mm 2 1/2 x 0.065"	0,588	22	79	1135780NL	PQE	W	○
80	76,2 x 1,65 mm 3 x 0.065"	0,755	17	86	1135820NL	PQE	W	○
100	101,60 x 2,11 mm 4 x 0.083"	1,423	16	105	1136000NL	PQE	W	○
150	152,4 x 2,77 mm 6 x 0.109"	3,907	14	143	1136025	PQE	W	○

¹⁾ Maximum operating pressure at maximum 20 C° according to EN 13480-3 ²⁾ Execution: S = seamless tubes W = manufactured from welded tubes
³⁾ ○ = Made to order, ● = Stock standard product

Rometec srl - www.rometec.it - Rometec srl - www.rometec.it - Rometec srl - www.rometec.it

EQUAL TEE - METRIC

Rometec srl - www.rometec.it - Rometec srl - www.rometec.it - Rometec srl - www.rometec.it



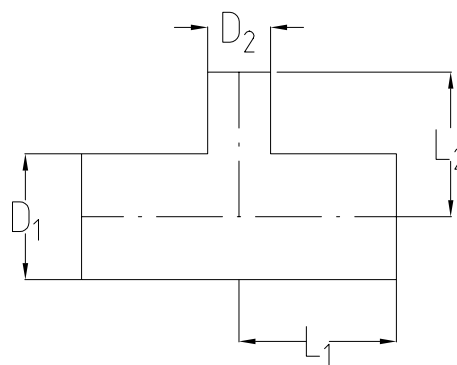
(D) x wall (mm)	Weight (Kg/m)	Pressure ¹ (Bar)	(L) Length (mm)	Article number	Product name	Execution ² S/W	Stock ³ ○ / ●
6,00 x 1,00 mm	0,013	304	30	1104040	PQE	S	●
8,00 x 1,00 mm	0,027	204	30	1104200	PQE	S	●
10,00 x 1,00 mm	0,036	151	30	0100360	PQE	S	○
12,00 x 1,00 mm	0,044	118	35	1104440	PQE	S	●
18,00 x 1,50 mm	0,103	131	35	1104800	PQE	S	●
28,00 x 1,50 mm	0,176	72	50	1105320	PQE	S/W	○

¹⁾ Maximum operating pressure at maximum 20 C° according to EN 13480-3 ²⁾ Execution: S = seamless tubes W = manufactured from welded tubes
³⁾ ○ = Made to order, ● = Stock standard product

Rometec srl - www.rometec.it - Rometec srl - www.rometec.it - Rometec srl - www.rometec.it

UNEQUAL TEE - IMPERIAL

Rometec srl - www.rometec.it - Rometec srl - www.rometec.it - Rometec srl - www.rometec.it



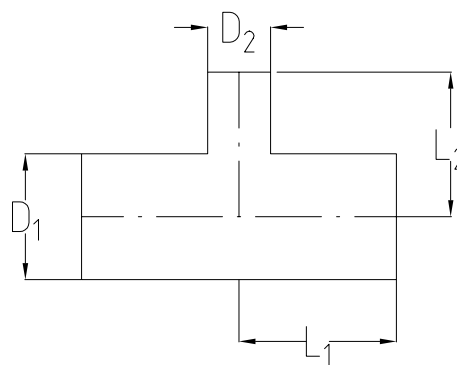
DN	(D1) x wall (mm)	(D2) x wall (mm)	Weight (Kg/m)	Pressure ¹ (Bar)	(L1) Length (mm)	(L2) Length (mm)	Article number	Product name	Execution ² S/W	Stock ³ ○ / ●
10/8	9,53 x 0,89 mm 3/8 x 0.035"	6,35 x 0,89 mm 1/4 x 0.035"	0,222	158	45	45	1104286NL	PQE	S	○
15/8	12,70 x 1,24 mm 1/2 x 0.049"	6,35 x 0,89 mm 1/4 x 0.035"	0,044	163	48	48	1104566NL	PQE	S	○
15/10	12,70 x 1,24 mm 1/2 x 0.049"	9,53 x 0,89 mm 3/8 x 0.035"	0,047	130	48	48	1104568	PQE	S	○
20/8	19,05 x 1,65 mm 3/4 x 0.065"	6,35 x 0,89 mm 1/4 x 0.035"	0,083	149	51	51	1104886	PQE	S	○
20/10	19,05 x 1,65 mm 3/4 x 0.065"	9,53 x 0,89 mm 3/8 x 0.035"	0,086	123	51	51	1104888	PQE	S	○
20/15	19,05 x 1,65 mm 3/4 x 0.065"	12,70 x 1,24 mm 1/2 x 0.049"	0,093	121	51	51	1104890	PQE	S	○
25/8	25,40 x 1,65 mm 1 x 0.065"	6,35 x 0,89mm 1/4 x 0.035"	0,131	115	54	54	1105166	PQE	S	○
25/10	25,40 x 1,65 mm 1 x 0.065"	9,53 x 0,89 mm 3/8 x 0.035"	0,131	98	54	54	1105167	PQE	S	○
25/15	25,40 x 1,65 mm 1 x 0.065"	12,70 x 1,24 mm 1/2 x 0.049"	0,135	97	54	54	1105168	PQE	S	○
25/20	25,40 x 1,65 mm 1 x 0.065"	19,05 x 1,65 mm 3/4 x 0.065"	0,256	91	54	54	1105175	PQE	S	○
40/15	38,1 x 1,65 mm 1 1/2 x 0.065"	12,70 x 1,24 mm 1/2 x 0.049"	-	-	-	-	-	PQE	W	○
40/20	38,1 x 1,65 mm 1 1/2 x 0.065"	19,05 x 1,65 mm 3/4 x 0.065"	-	-	-	-	-	PQE	W	○
40/25	38,1 x 1,65 mm 1 1/2 x 0.065"	25,40 x 1,65 mm 1 x 0.065"	-	-	-	-	-	PQE	W	○
50/15	50,8 x 1,65 mm 2 x 0.065"	12,70 x 1,24 mm 1/2 x 0.049"	-	-	-	-	-	PQE	W	○
50/20	50,8 x 1,65 mm 2 x 0.065"	19,05 x 1,65 mm 3/4 x 0.065"	-	-	-	-	-	PQE	W	○
50/25	50,8 x 1,65 mm 2 x 0.065"	25,40 x 1,65 mm 1 x 0.065"	-	-	-	-	-	PQE	W	○
50/40	50,8 x 1,65 mm 2 x 0.065"	38,1 x 1,65 mm 1 1/2 x 0.065"	-	-	-	-	-	PQE	W	○

¹⁾ Maximum operating pressure at maximum 20 C° according to EN 13480-3 ²⁾ Execution: S = seamless tubes W = manufactured from welded tubes
³⁾ ○ = Made to order, ● = Stock standard product

Rometec srl - www.rometec.it - Rometec srl - www.rometec.it - Rometec srl - www.rometec.it

UNEQUAL TEE - IMPERIAL

Rometec srl - www.rometec.it - Rometec srl - www.rometec.it - Rometec srl - www.rometec.it



DN	(D1) x wall (mm)	(D2) x wall (mm)	Weight (Kg/m)	Pressure ¹ (Bar)	(L1) Length (mm)	(L2) Length (mm)	Article number	Product name	Execution ² S/W	Stock ³ ○ / ●
65/15	63,5 x 1,65 mm 2 1/2 x 0.065"	12,70 x 1,24 mm 1/2 x 0.049"	-	-	-	-	-	PQE	W	○
65/20	63,5 x 1,65 mm 2 1/2 x 0.065"	19,05 x 1,65 mm 3/4 x 0.065"	-	-	-	-	-	PQE	W	○
65/25	63,5 x 1,65 mm 2 1/2 x 0.065"	25,40 x 1,65 mm 1 x 0.065"	0,501	38	73	73	1135785NL	PQE	W	○
65/40	63,5 x 1,65 mm 2 1/2 x 0.065"	38,1 x 1,65 mm 1 1/2 x 0.065"	-	-	-	-	-	PQE	W	○
65/50	63,5 x 1,65 mm 2 1/2 x 0.065"	50,8 x 1,65 mm 2 x 0.065"	-	-	-	-	-	PQE	W	○
80/15	76,2 x 1,65 mm 3 x 0.065"	12,70 x 1,24 mm 1/2 x 0.049"	0,601	32	79	79	1135823	PQE	W	○
80/20	76,2 x 1,65 mm 3 x 0.065"	19,05 x 1,65 mm 3/4 x 0.065"	-	-	-	-	-	PQE	W	○
80/25	76,2 x 1,65 mm 3 x 0.065"	25,40 x 1,65 mm 1 x 0.065"	0,636	32	79	79	1135825	PQE	W	○
80/40	76,2 x 1,65 mm 3 x 0.065"	38,1 x 1,65 mm 1 1/2 x 0.065"	0,666	26	79	79	1135826	PQE	W	○
80/50	76,2 x 1,65 mm 3 x 0.065"	50,8 x 1,65 mm 2 x 0.065"	0,696	22	79	79	1135827NL	PQE	W	○
80/65	76,2 x 1,65 mm 3 x 0.065"	63,5 x 1,65 mm 2 1/2 x 0.065"	-	-	-	-	-	PQE	W	○
100/25	101,60 x 2,11 mm 4 x 0.083"	25,40 x 1,65 mm 1 x 0.065"	1,181	31	92	92	1136010	PQE	W	○
100/40	101,60 x 2,11 mm 4 x 0.083"	38,1 x 1,65 mm 1 1/2 x 0.065"	1,211	26	92	92	1136012	PQE	W	○
100/50	101,60 x 2,11 mm 4 x 0.083"	50,8 x 1,65 mm 2 x 0.065"	1,241	22	98	98	1136018	PQE	W	○
100/65	101,60 x 2,11 mm 4 x 0.083"	63,5 x 1,65 mm 2 1/2 x 0.065"	-	-	-	-	-	PQE	W	○
100/80	101,60 x 2,11 mm 4 x 0.083"	76,2 x 1,65 mm 3 x 0.065"	1,300	17	98	98	1136022	PQE	W	○
150/50	152,4 x 2,77 mm 6 x 0.109"	50,8 x 1,65 mm 2 x 0.065"	-	-	-	-	-	PQE	W	○
150/80	152,4 x 2,77 mm 6 x 0.109"	76,2 x 1,65 mm 3 x 0.065"	-	-	-	-	-	PQE	W	○
150/100	152,4 x 2,77 mm 6 x 0.109"	101,60 x 2,11 mm 4 x 0.083"	3,522	14	130	130	1136050US	PQE	W	○

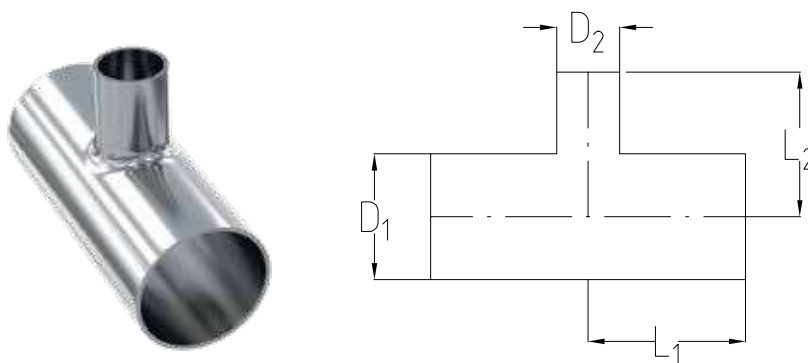
¹⁾ Maximum operating pressure at maximum 20 C° according to EN 13480-3 ²⁾ Execution: S = seamless tubes W = manufactured from welded tubes

³⁾ ○ = Made to order, ● = Stock standard product

Rometec srl - www.rometec.it - Rometec srl - www.rometec.it - Rometec srl - www.rometec.it

UNEQUAL TEE - METRIC

Rometec srl - www.rometec.it - Rometec srl - www.rometec.it - Rometec srl - www.rometec.it



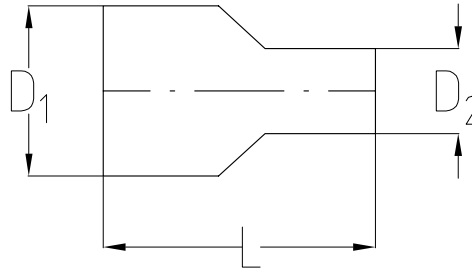
(D1) x wall (mm)	(D2) x wall (mm)	Weight (Kg/m)	Pressure ¹ (Bar)	(L1) Length (mm)	(L2) Length (mm)	Article number	Product name	Execution ² S/W	Stock ³ ○ / ●
8,00 x 1,00 mm	6,00 x 1,00 mm	0,025	245	30	30	1104201	PQE	S	○
10,00 x 1,00 mm	6,00 x 1,00 mm	0,031	205	30	30	1104366	PQE	S	○
10,00 x 1,00 mm	8,00 x 1,00 mm	0,033	174	30	30	1304363	PQE	S	○
12,00 x 1,00 mm	6,00 x 1,00 mm	0,037	176	35	35	1104446	PQE	S	●
12,00 x 1,00 mm	8,00 x 1,00 mm	0,039	151	35	35	1104447	PQE	S	○
12,00 x 1,00 mm	10,00 x 1,00 mm	0,042	133	35	35	1104448	PQE	S	○
18,00 x 1,50 mm	6,00 x 1,00 mm	0,079	185	35	35	1104806	PQE	S	●
18,00 x 1,50 mm	8,00 x 1,00 mm	0,081	163	35	35	1104807	PQE	S	○
18,00 x 1,50 mm	10,00 x 1,00 mm	0,084	145	35	35	1104808	PQE	S	○
18,00 x 1,50 mm	12,00x1,00 mm	0,086	130	35	35	1104809	PQE	S	●
28,00 x 1,50 mm	12,00 x 1,00 mm	0,140	93	50	50	1105329	PQE	S/W	○
28,00 x 1,50 mm	18,00 x 1,50 mm	0,157	95	50	50	1105332	PQE	S/W	○

¹⁾ Maximum operating pressure at maximum 20 C° according to EN 13480-3 ²⁾ Execution: S = seamless tubes W = manufactured from welded tubes
³⁾ ○ = Made to order, ● = Stock standard product

Rometec srl - www.rometec.it - Rometec srl - www.rometec.it - Rometec srl - www.rometec.it

CONCENTRIC REDUCER - IMPERIAL

Rometec srl - www.rometec.it - Rometec srl - www.rometec.it - Rometec srl - www.rometec.it



DN	(D1) x wall (mm)	(D2) x wall (mm)	Weight (Kg/m)	Pressure ¹ (Bar)	(L1) Length (mm)	Article number	Product name	Execution ² B/P	Stock ³ ○ / ●
10/8	9,53 x 0,89 mm 3/8 x 0.035"	6,35 x 0,89 mm 1/4 x 0.035"	0,050	-	41	1107280	PQE	B	○
15/8	12,70 x 1,24 mm 1/2 x 0.049"	6,35 x 0,89 mm 1/4 x 0.035"	0,050	-	38	1107560	PQE	B	○
15/10	12,70 x 1,24 mm 1/2 x 0.049"	9,53 x 0,89 mm 3/8 x 0.035"	0,050	-	38	1107562	PQE	B	○
20/8	19,05 x 1,65 mm 3/4 x 0.065"	6,35 x 0,89 mm 1/4 x 0.035"	0,075	-	38	1107881	PQE	B	○
20/10	19,05 x 1,65 mm 3/4 x 0.065"	9,53 x 0,89 mm 3/8 x 0.035"	0,075	-	60	1107893	PQE	B	○
20/15	19,05 x 1,65 mm 3/4 x 0.065"	12,70 x 1,24 mm 1/2 x 0.049"	0,075	-	60	1107883	PQE	B	○
25/15	25,40 x 1,65 mm 1 x 0.065"	12,70 x 1,24 mm 1/2 x 0.049"	0,100	-	60	1108163	PQE	B	○
25/20	25,40 x 1,65 mm 1 x 0.065"	19,05 x 1,65 mm 3/4 x 0.065"	0,100	-	54	1108168	PQE	B	○
40/15	38,1 x 1,65 mm 1 1/2 x 0.065"	12,70 x 1,24 mm 1/2 x 0.049"	0,125	-	80	1108482	PQE	B	○
40/20	38,1 x 1,65 mm 1 1/2 x 0.065"	19,05 x 1,65 mm 3/4 x 0.065"	0,125	-	76	1108485	PQE	B	○
40/25	38,1 x 1,65 mm 1 1/2 x 0.065"	25,40 x 1,65 mm 1 x 0.065"	0,125	-	64	1108487	PQE	B	○
50/25	50,8 x 1,65 mm 2 x 0.065"	25,40 x 1,65 mm 1 x 0.065"	0,300	-	86	1108688	PQE	B	○
50/40	50,8 x 1,65 mm 2 x 0.065"	38,1 x 1,65 mm 1 1/2 x 0.065"	0,300	-	64	1108690	PQE	B	○

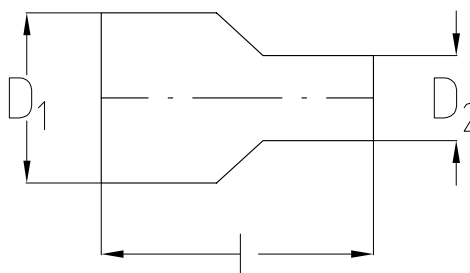
¹⁾ Maximum operating pressure at maximum 20 C° according to EN 13480-3 ²⁾ B = manufactured from solid bar, P = pressed plate

³⁾ ○ = Made to order, ● = Stock standard product

Rometec srl - www.rometec.it - Rometec srl - www.rometec.it - Rometec srl - www.rometec.it

CONCENTRIC REDUCER - IMPERIAL

Rometec srl - www.rometec.it - Rometec srl - www.rometec.it - Rometec srl - www.rometec.it



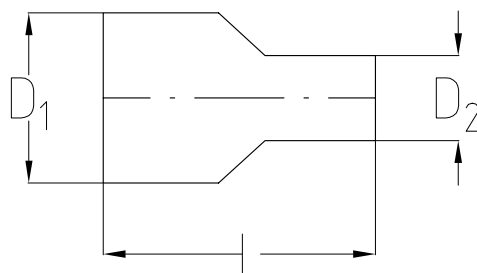
DN	(D1) x wall (mm)	(D2) x wall (mm)	Weight (Kg/m)	Pressure ¹ (Bar)	(L1) Length (mm)	Article number	Product name	Execution ² B/P	Stock ³ ○ / ●
65/25	63,5 x 1,65 mm 2 1/2 x 0.065"	25,40 x 1,65 mm 1 x 0.065"	0,500	-	100	1108812	PQE	B	○
65/40	63,5 x 1,65 mm 2 1/2 x 0.065"	38,1 x 1,65 mm 1 1/2 x 0.065"	-	-	86	-	PQE	B	○
65/50	63,5 x 1,65 mm 2 1/2 x 0.065"	50,8 x 1,65 mm 2 x 0.065"	0,500	-	64	1108816	PQE	B	○
80/40	76,2 x 1,65 mm 3 x 0.065"	38,1 x 1,65 mm 1 1/2 x 0.065"	0,750	-	108	1108826	PQE	B	○
80/50	76,2 x 1,65 mm 3 x 0.065"	50,8 x 1,65 mm 2 x 0.065"	0,750	-	86	1108832	PQE	B	○
80/65	76,2 x 1,65 mm 3 x 0.065"	63,5 x 1,65 mm 2 1/2 x 0.065"	0,750	-	67	1108836	PQE	B	○
100/50	101,60 x 2,11 mm 4 x 0.083"	50,8 x 1,65 mm 2 x 0.065"	0,890	-	130	1109013	PQE	B	○
100/65	101,60 x 2,11 mm 4 x 0.083"	63,5 x 1,65 mm 2 1/2 x 0.065"	-	-	108	-	PQE	B	○
100/80	101,60 x 2,11 mm 4 x 0.083"	76,2 x 1,65 mm 3 x 0.065"	0,890	-	98	1109033	PQE	B	○
150/80	152,4 x 2,77 mm 6 x 0.109"	76,2 x 1,65 mm 3 x 0.065"	-	-	185	-	PQE	B	○
150/100	152,4 x 2,77 mm 6 x 0.109"	101,60 x 2,11 mm 4 x 0.083"	1,200	-	143	1109050	PQE	B	○

¹⁾ Maximum operating pressure at maximum 20 C° according to EN 13480-3 ²⁾ B = manufactured from solid bar, P = pressed plate
³⁾ ○ = Made to order, ● = Stock standard product

Rometec srl - www.rometec.it - Rometec srl - www.rometec.it - Rometec srl - www.rometec.it

CONCENTRIC REDUCER - METRIC

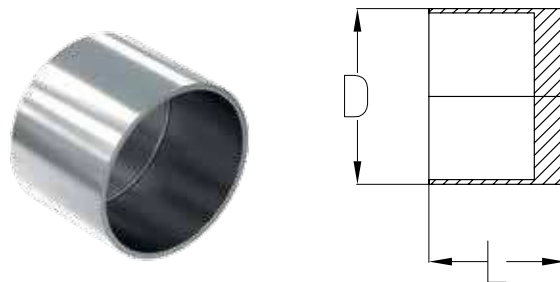
Rometec srl - www.rometec.it - Rometec srl - www.rometec.it - Rometec srl - www.rometec.it



(D1) x wall (mm)	(D2) x wall (mm)	Weight (Kg/m)	Pressure ¹ (Bar)	(L1) Length (mm)	Article number	Product name	Execution ² B/P	Stock ³ ○ / ●
8,00 x 1,00 mm	6,00 x 1,00 mm	-	-	38	-	PQE	B	○
10,00 x 1,00 mm	6,00 x 1,00 mm	-	-	38	-	PQE	B	○
10,00 x 1,00 mm	8,00 x 1,00 mm	-	-	38	-	PQE	B	○
12,00 x 1,00 mm	6,00 x 1,00 mm	0,050	176	38	1107442	PQE	B	○
12,00 x 1,00 mm	8,00 x 1,00 mm	0,050	-	38	1107450	PQE	B	○
12,00 x 1,00 mm	10,00 x 1,00 mm	0,050	-	38	1107452	PQE	B	○
18,00 x 1,50 mm	10,00 x 1,00 mm	-	-	38	-	PQE	B	○
18,00 x 1,50 mm	12,00x1,00 mm	0,100	119	38	1107806	PQE	B	○
28,00 x 1,50 mm	18,00 x 1,50 mm	0,100	-	70	1108325	PQE	B	○

¹⁾ Maximum operating pressure at maximum 20 C° according to EN 13480-3 ²⁾ B = manufactured from solid bar, P = pressed plate
³⁾ ○ = Made to order, ● = Stock standard product ⁴⁾ Special request

Rometec srl - www.rometec.it - Rometec srl - www.rometec.it - Rometec srl - www.rometec.it



DN	(D) x wall (mm)	Weight (Kg/m)	Pressure ¹ (Bar)	(L1) Length (mm)	Article number	Product name	Execution ² B/P	Stock ³ ○ / ●
8	6,35 x 0,89 mm 1/4 x 0.035"	0,050	-	35	1109121	PQE	B	○
10	9,53 x 0,89 mm 3/8 x 0.035"	0,050	-	45	1109280	PQE	B	○
15	12,70 x 1,24 mm 1/2 x 0.049"	0,050	-	45	1109566	PQE	B	○
20	19,05 x 1,65 mm 3/4 x 0.065"	0,150	-	45	1109609	PQE	B	○
25	25,40 x 1,65 mm 1 x 0.065"	0,150	-	45	1109640	PQE	B	○
40	38,1 x 1,65 mm 1 1/2 x 0.065"	0,400	-	51	1109721	PQE	B	○
50	50,8 x 1,65 mm 2 x 0.065"	0,400	-	51	1109761	PQE	B	○
65	63,5 x 1,65 mm 2 1/2 x 0.065"	1,000	-	51	1109780	PQE	B	○
80	76,2 x 1,65 mm 3 x 0.065"	1,500	-	51	1109800	PQE	B	○
100	101,60 x 2,11 mm 4 x 0.083"	2,500	-	64	1109900	PQE	B	○
150	152,4 x 2,77 mm 6 x 0.109"	5,500	-	-	-	PQE	B	- ⁴

(D) x wall (mm)	Weight (Kg/m)	Pressure ¹ (Bar)	(L1) Length (mm)	Article number	Product name	Execution ² B/P	Stock ³ ○ / ●
6,00 x 1,00 mm	-	-	-	-	PQE	B	- ⁴
8,00 x 1,00 mm	-	-	-	-	PQE	B	- ⁴
10,00 x 1,00 mm	-	-	-	-	PQE	B	- ⁴
12,00 x 1,00 mm	-	37	-	-	PQE	B	○
18,00 x 1,50 mm	-	45	-	-	PQE	B	○
28,00 x 1,50 mm	-	45	-	-	PQE	B	○

¹) Maximum operating pressure at maximum 20 C° according to EN 13480-3 ²) B = manufactured from solid bar, P = pressed plate

³) ○ = Made to order, ● = Stock standard product ⁴) Special request