



Fire Pump Test Meter

Product Description

The Fire Pump Test Meters are available in Butt Weld, Grooved, 150 # Flanged and 300 # Flanged.

Material Specifications

Materials	Machined 1018/1026 Carbon Steel or Cast Carbon Steel WCB
Valves	1/4" Brass Ball Valve
Flange Options	150# ANSI B 16.5 300# ANSI B 16.5
ID Tag	Polycarbonate

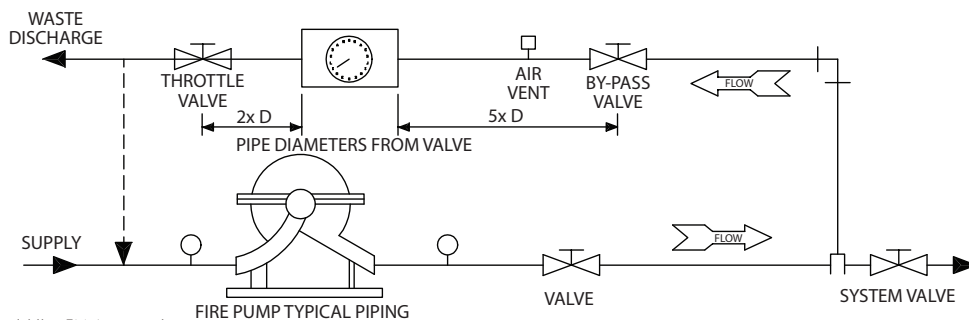
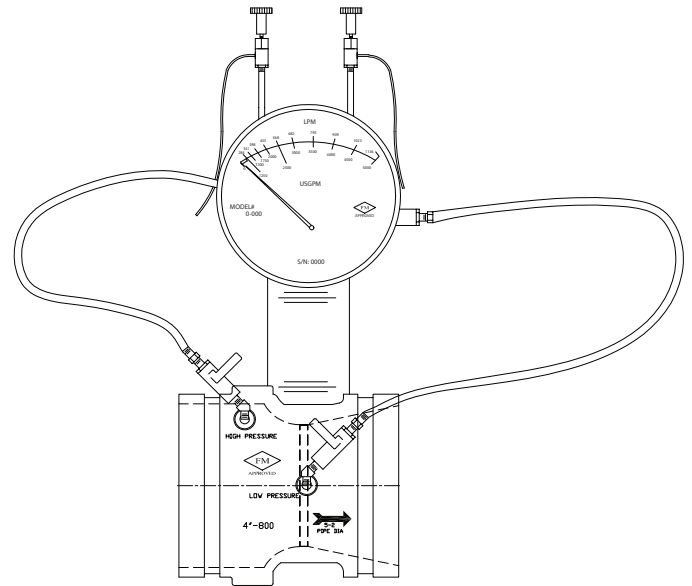


Meter Data

Construction	Aluminium Body
Operation	Diaphragm (Buna Convuluted)
Accuracy	+2% Full Scale
Temperature	80°C / 180°F
Max. Working Pressure	34.5 bar (500 psi) Butt weld, grooved & 300 # Flanged 19 bar (275 psi) 150 # Flanged
Approx. Weight	1.7kg (3.75lbs)
Dial	4" Standard Dial 6" Available Dial

Operating Instructions

1. Close system valve
2. Open system by-pass valve and throttle valve
3. Pure meter located on meter as follows:
 - Open shut-off valves and vent valves.
 - When a steady stream of water is passing through each plastic hose, the meter is purged of air.
 - Close vent valve after purging.
4. Refer to pump GPM / LPM requirement and adjust throttle valve for this requirement.
5. After test open system valve and close system by-pass and throttle valves.
6. After test open system valve and close system by-pass and throttle valves.



Manufactured by Global Vision who hold the FM Approval

DS: 6.08
Issue C
08/07/2019

Rapidrop Global Ltd
T: +44 (0) 1733 847 510 F: +44 (0) 1733 553 958
e: rapidrop@rapidrop.com



Fire Pump Test Meter

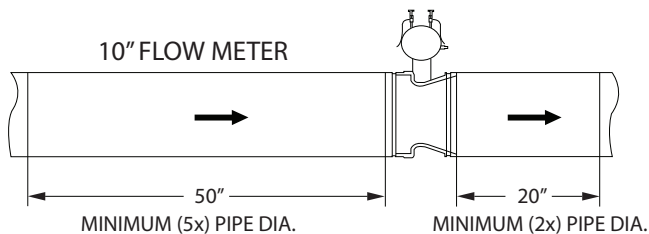
Fire Pump Flow System and Sizes

Line Size	Pump LPM	Meter Range Min & Max LPM	Pump GPM	Meter Range Min & Max GPM
** 1 1/4"	95	45 - 190	25	12.5 - 50
2"	190	95 - 380	50	25 - 100
** 2 1/2"	380	190 - 755	100	50 - 200
3"	570	285 - 1135	150	75 - 300
3"	755	380 - 1515	200	100 - 400
4"	945	475 - 1895	250	125 - 500
4"	1135	570 - 2270	300	150 - 600
4"	1515	755 - 3030	400	200 - 800
4"	1705	850 - 3405	450	225 - 900
5"	1705	850 - 3405	450	225 - 900
5"	1895	945 - 3785	500	250 - 1000
5"	2840	1420 - 5680	750	375 - 1500
6"	1895	945 - 3785	500	250 - 1000
6"	2840	1420 - 5680	750	375 - 1500
6"	3785	1895 - 7570	1000	500 - 2000
6"	4730	2365 - 9465	1250	625 - 2500
8"	3785	1895 - 7570	1000	500 - 2000
8"	4730	2365 - 9465	1250	625 - 2500
8"	5680	2840 - 11355	1500	750 - 3000
8"	7570	3785 - 15140	2000	1000 - 4000

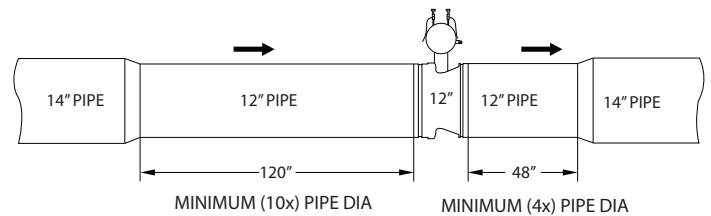
Line Size	Pump LPM	Meter Range Min & Max LPM	Pump GPM	Meter Range Min & Max GPM
8"	9465	4730 - 18925	2500	1250 - 5000
8"	11355	5680 - 22710	3000	1500 - 6000
10"	5680	2840 - 11355	1500	750 - 3000
10"	7570	3785 - 15140	2000	1000 - 4000
10"	9465	4730 - 18925	2500	1250 - 5000
10"	11355	5680 - 22710	3000	1500 - 6000
10"	13250	6625 - 26495	3500	1750 - 7000
10"	15140	7570 - 30280	4000	2000 - 8000
10"	17035	8515 - 34065	4500	2250 - 9000
12"	9465	4730 - 18925	2500	1250 - 5000
12"	11355	5680 - 22710	3000	1500 - 6000
12"	13250	6625 - 26495	3500	1750 - 7000
12"	15140	7570 - 30280	4000	2000 - 8000
12"	17035	8515 - 34065	4500	2250 - 9000
12"	18925	9465 - 37850	5000	2500 - 10000
** 14"	15140	7570 - 30280	4000	2000 - 8000
** 14"	17035	8515 - 34065	4500	2250 - 9000
** 14"	18925	9465 - 37850	5000	2500 - 10000
** 14"	22710	11355 - 45420	6000	3000 - 12000

** Sizes 1-1/4" and 14" are not FM approved. For all sizes, please check for stock availability

Typical installation with 5/2 pipe diameters
Clear of obstruction, valves or bends



If reducers are used, lengthen the min pipe diameter to 10/4 to ensure accuracy is maintained



Manufactured by Global Vision who hold the FM Approval

DS: 6.08
Issue C
08/07/2019

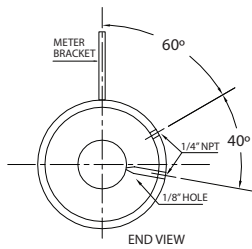
Rapidrop Global Ltd
T: +44 (0) 1733 847 510 F: +44 (0) 1733 553 958
e: rapidrop@rapidrop.com



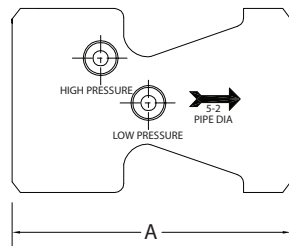
Fire Pump Test Meter

Dimensions

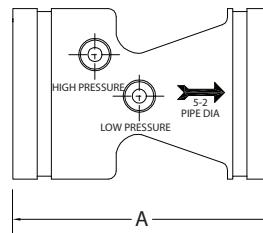
Size	Pressure 34.5 bar (500 psi) Butt Weld / Grooved		Pressure 19 bar (275 psi) 150 # Flanged		Pressure 34.5 bar (500 psi) 300 # Flanged	
	A	Aprox. Weight	A	Aprox. Weight	A	Aprox. Weight
1 1/4"	124	4.5	-	-	-	-
2"	127	5.0	-	11.3	-	-
2 1/2"	102	5.0	235	11.3	254	15.9
3"	102	5.9	238	18.1	260	22.7
4"	137	6.8	289	22.7	308	29.5
5"	152	9.1	330	27.2	349	36.3
6"	178	11.3	356	34.0	375	52.2
8"	184	15.9	387	54.4	406	79.4
10"	203	27.2	406	77.1	438	102.0
12"	254	29.5	483	102.0	514	156.5



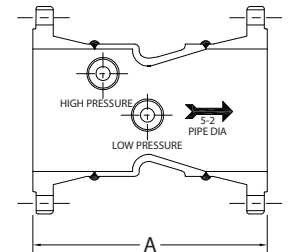
BUTT WELD / GROOVED



BUTT WELD



GROOVED



FLANGED

Manufactured by Global Vision who hold the FM Approval

DS: 6.08
Issue C
08/07/2019

Rapidrop Global Ltd
T: +44 (0) 1733 847 510 F: +44 (0) 1733 553 958
e: rapidrop@rapidrop.com