



CERT/LPCB/ ref. 085a01

## Pressure Switch

### Description

Type 1381 and 1381V pressure switches are used for monitoring pressure to sound an alarm, operate a warning light or cut off an electrical supply as soon as the pressure rises to the set point. Each unit contains one double pole switch (common, normally open and normally closed connections) activated by a diaphragm. 'Standard Pressure Switch Wiring Instructions' data sheet supplied with each unit.

### Pressure Range

Pressure Range	Hysteresis Typical
-1 to +1 bar	0.04 bar
0.2 to 4 bar	0.07 bar
0.5 to 11 bar	0.3 bar
0.7 to 14 bar	0.4 bar
2 to 28 bar	0.6 bar
2 to 42 bar	0.8 bar

### Temperature

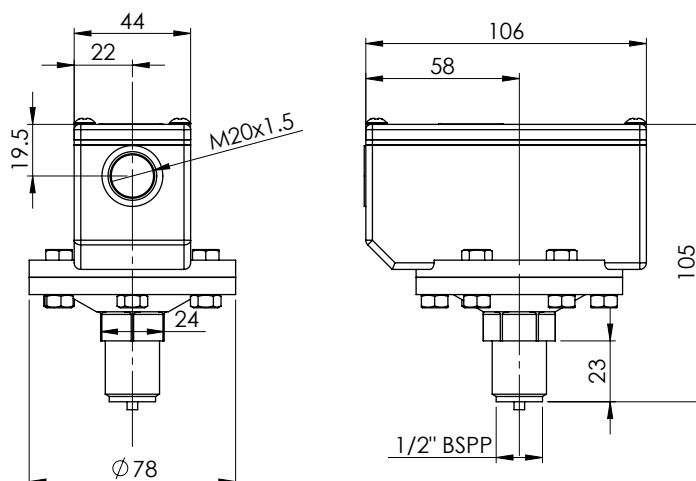
Temperature Range -10°C to +85°C

### Approvals

LPCB, CE marked to EN 60730-1 (low voltage directive)

### Material Specification

Part Name	Material
Type 1381 (Non Variable)	Factory set @ 0.8 Bar rising, Resets @ 0.4 Bar.
Type 1381V (Variable)	Factory set @ 5 Bar rising, Resets @ 0.4 Bar.
Accuracy	+/- 2% of range
Enclosure	IP65
Weight	0.9 Kg
Diaphragm	Beryllium Copper
Seal	Glass Filled PTFE
Base / Connection	Brass
Housing	Aluminium / Zinc diecast
Cover	Glass filled nylon with nitrile seal
Contact Rating	10 amp @ 250V (AC) 1 amp @ 30V (DC)



Manufactured by Bailey & Mackey who holds the LPCB certificate

DS: 2.02  
Issue C  
03/07/2018

©

Rapidrop Global Ltd

T: +44 (0) 1733 847 510 F: +44 (0) 1733 553 958

e: [rapidrop@rapidrop.com](mailto:rapidrop@rapidrop.com)

Rometec srl - [www.rometec.it](http://www.rometec.it) - [info@rometec.it](mailto:info@rometec.it) - Rometec srl - [www.rometec.it](http://www.rometec.it) - [info@rometec.it](mailto:info@rometec.it)

f 1