

# TRUMBULL

**TRUMBULL INDUSTRIES, INC.**

Phone: 330.799.3333 | 1040 N. Meridian Rd.  
Toll Free: 800.677.1799 | P.O. Box 1556  
Fax: 330.392.0756 | Youngstown, Ohio 44501

[www.trumbull-mfg.com](http://www.trumbull-mfg.com)

## Floor-Type Hydrostatic Tank Pressure Relief Valves (PRV's)

**QUADROSEAL** Design - Ductile Iron & Type 316 Cast Stainless Steel

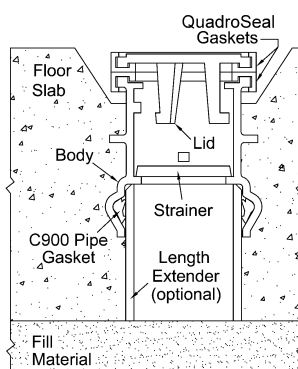
### TRUMBULL FLOOR TYPE TANK PRESSURE RELIEF VALVES

are cast in the bottom of tanks in treatment plants to keep empty tanks from floating from an excess of groundwater beneath them. When this condition occurs, the hydrostatic pressure will open the cover of the valve allowing water to enter, thereby equalizing pressure inside and outside the tank and preventing it from floating.

They will start to open at less than one foot of head. Lugs in the body prevent the cover or strainer from becoming separated from the body of the valve due to flow. Both can be removed when necessary, however, by turning to the right or left.

Both Floor Type & Wall Type Valves use two Neoprene seating surfaces so if particles of grit lodge on them, the head of liquid in the tank will force the valve closed. These valves are for low seating or unseating pressure applications only.

Improved design uses C900 pipe gaskets in bell to securely retain PVC pipe to valve.



### Floor-Type PRV's

Available in both high-strength ductile iron and type 316 cast stainless steel models.\*

Size	Ductile Iron**		316 Stainless Steel	
	Domestic	Non-Domestic	Domestic	Non-Domestic
4"	<b>1367-1558</b>	<b>367-1558</b>	<b>1367-1540</b>	<b>367-1540</b>
6"	<b>1367-1559</b>	<b>367-1559</b>	<b>1367-1544</b>	<b>367-1544</b>

\* For product weights, see drawing on Page G-30.

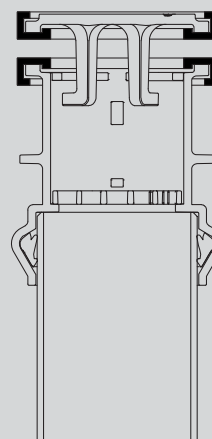
\*\* Furnished with NSF-61, 2 part epoxy coating.

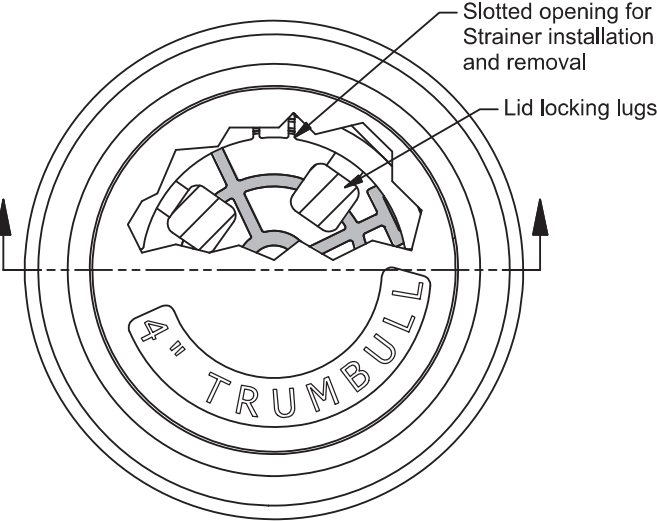
Floor type valves are cast in 4" and 6" sizes, in overall lengths of approx. 7-3/4". The lengths can be extended by inserting C900 PVC pipe into the underside of the valve. The PVC extensions can be furnished and inserted by Trumbull, to customer's exact length requirements, or in the field with customer supplied PVC pipe.

**QUADROSEAL**  
gaskets

Unique square design of QuadroSeal Gasket **SURROUNDS CASTING ON 4 SIDES** to prevent separation.

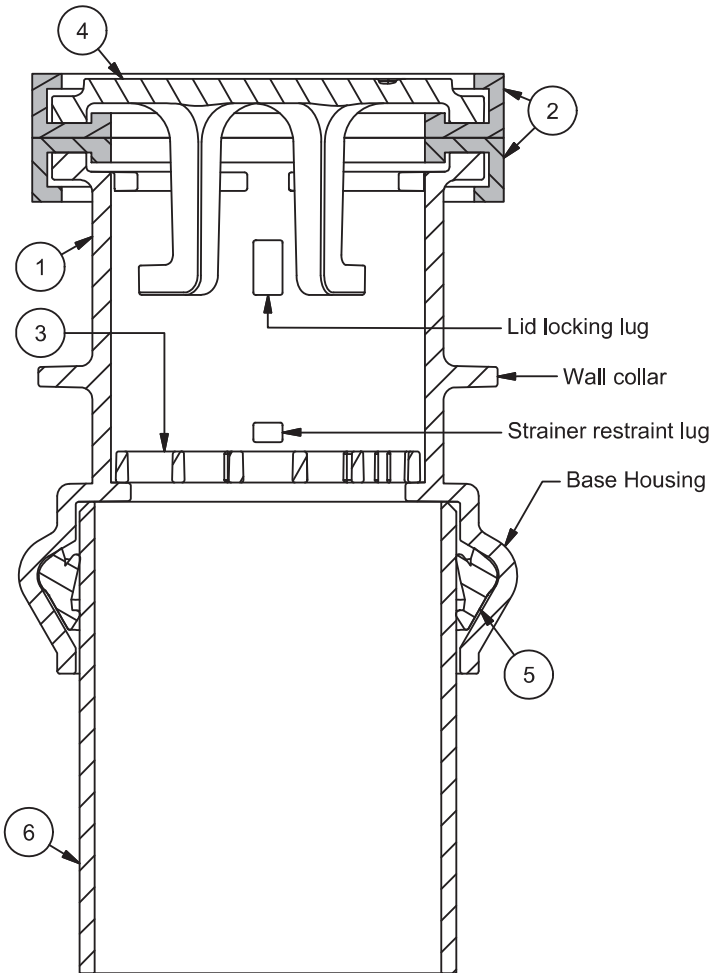
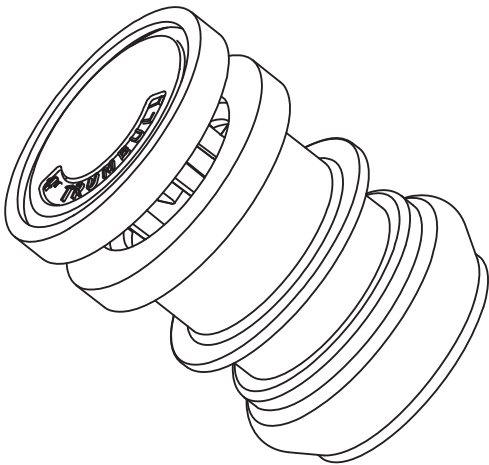
QuadroSeal design also prevents metal-to-metal contact that can cause seating surfaces of iron valves to corrode into a "frozen shut" position. See page G-33 for more information.





ITEM	DESCRIPTION	MATERIAL
1	Valve Body	Stainless Steel (T316) or Ductile Iron (65-45-12)
2	QuadroSeal Seat	Neoprene (50 durometer)
3	Strainer	Stainless Steel (T316) or Ductile Iron (65-45-12)
4	Lid	Stainless Steel (T316) or Ductile Iron (65-45-12)
5	C900 Pipe Gasket	SBR
6	Length Extender	C900 PVC Pipe

**Note:**  
Ductile Iron components are coated with Tnemec N140-1211 epoxy (complies with NSF 61).



Size	Material	Part Number	Weight
4"	DI	367-1558	12.0 lb
4"	SS	367-1540	13.0 lb
6"	DI	367-1559	22.0 lb
6"	SS	367-1544	22.0 lb

Valve size	4	6
Overall height - closed	7-5/8"	7-59/64"
Lid lift distance	1"	1"
Seat O.D.	6"	8"
Base Housing O.D.	6-11/32"	8-5/8"
Fits C900 pipe size	4"	6"
Wall collar O.D.	5-27/32"	8-1/8"
Body seat face to Collar CL	3"	2-7/8"
Strainer flow area	7.3 sq. in	18.9 sq. in

Drawn:	Drawing Revision:	TRUMBULL INDUSTRIES	Drawn to Scale
Date	Rev.	P.O. Box 1556	TANK PRESSURE RELIEF VALVE
1/7/2013	--	1040 N. Meridian Rd.	FLOOR TYPE
		Youngstown, Ohio 44501	

# TRUMBULL

**TRUMBULL INDUSTRIES, INC.**

Phone: 330.799.3333 | 1040 N. Meridian Rd.  
Toll Free: 800.677.1799 | P.O. Box 1556  
Fax: 330.392.0756 | Youngstown, Ohio 44501

[www.trumbull-mfg.com](http://www.trumbull-mfg.com)

## Wall-Type Hydrostatic Tank Pressure Relief Valves (PRV's)

**QUADROSEAL** Design - Ductile Iron & Type 316 Cast Stainless Steel

**TRUMBULL WALL TYPE TANK PRESSURE RELIEF VALVES** are designed for installation in side walls of tanks of treatment plants. They are intended for low unseating pressure applications and will start to open at less than one foot of head to relieve groundwater pressure from the exterior of tank wall. For low seating applications, contact Trumbull.

Trumbull Relief Valves use two Neoprene seating surfaces so if particles of grit lodge on them, the head of liquid in the tank will force the valve closed.

The valve has a flanged body for use with a wall pipe. The flange drilling is according to ANSI 125# STD on both sizes. The wall type valve uses a removable stainless steel hinge pin and two stainless cotter pins.



### Wall-Type PRV's

Available in both high-strength ductile iron and type 316 cast stainless steel models.\*

Size	Ductile Iron**		316 Stainless Steel	
	Domestic	Non-Domestic	Domestic	Non-Domestic
4"	<b>1367-1572</b>	<b>367-1572</b>	<b>1367-1560</b>	<b>367-1560</b>
6"	<b>1367-1573</b>	<b>367-1573</b>	<b>1367-1564</b>	<b>367-1564</b>

\* For product weights, see drawing on Page G-32.

\*\* Furnished with NSF-61, 2 part epoxy coating.

**QUADROSEAL**  
gaskets

Unique square design of QuadroSeal Gasket **SURROUNDS CASTING ON 4 SIDES** to prevent separation. This design also prevents metal-to-metal contact that can cause seating surfaces of iron valves to corrode into a "frozen shut" position. See page G-33 for more information.

### Wallpipes

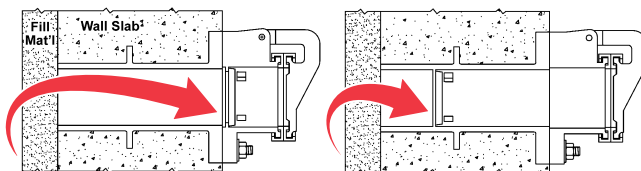
Wallpipes are 18" long (overall) with a collar 6" from the face of the flange; they can be furnished cut-to-length to meet your requirements. The flange is tapped for studs to allow the flange on the wall pipe to be set flush with the wall. No flange accessories will be furnished unless ordered separately. Wallpipe & Wall PRV sold separately. In order for the wall type valve to operate properly, it must be installed so that the bolt holes straddle the centerline.

Size	Ductile Iron	
	Trumbull Item No.	Weight
4"	<b>367-1000</b>	33.50 lbs.
6"	<b>367-1002</b>	68.50 lbs.

#### NOTE:

When stainless valves are used, wall pipes are furnished in ductile iron or fabricated from stainless pipe.

### Importance of Strainer Location:



Strainer in **TRUMBULL** valve is easily accessed for maintenance

Strainer installation of other designs

Easy access to strainer helps prevent blockage of flow that could lead to structural tank damage. Wallpipes are frequently provided by ductile pipe suppliers and don't have strainers. The accumulation of debris on seating surfaces can lead to leakage from the tank. To prevent that condition, specify a valve with an internal strainer.

### Wall Type, Pressure Relief Valve

Flange drilling per ANSI 125#

Size	Flange	Bolt Circle	Bolt Hole	Seat O.D.	Bore
4"	9" x 7/16"	7-1/2"	3/4"	6"	4"
6"	11" x 1/2"	9-1/2"	7/8"	8"	6"

Item	Description	Material
1	Strainer	Stainless Steel (T316) or Ductile Iron (65-45-12)
2	Body	Stainless Steel (T316) or Ductile Iron (65-45-12)
3	Lid Flap	Stainless Steel (T316) or Ductile Iron (65-45-12)
4	QuadroSeal Seat	Neoprene (50 durometer)
5	Clevis Pin	Stainless Steel
6	Cotter Pin	Stainless Steel

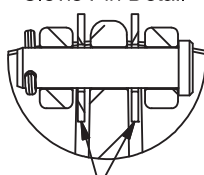
Size	Material	Part Number	Weight
4"	DI	367-1572	12.00 lb
4"	SS	367-1560	13.00 lb
6"	DI	367-1573	20.00 lb
6"	SS	367-1564	22.00 lb

#### Note:

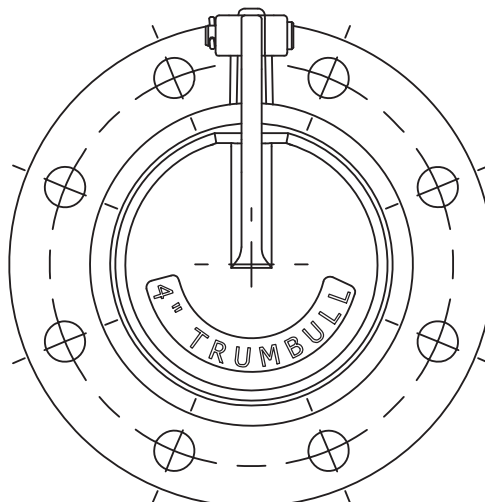
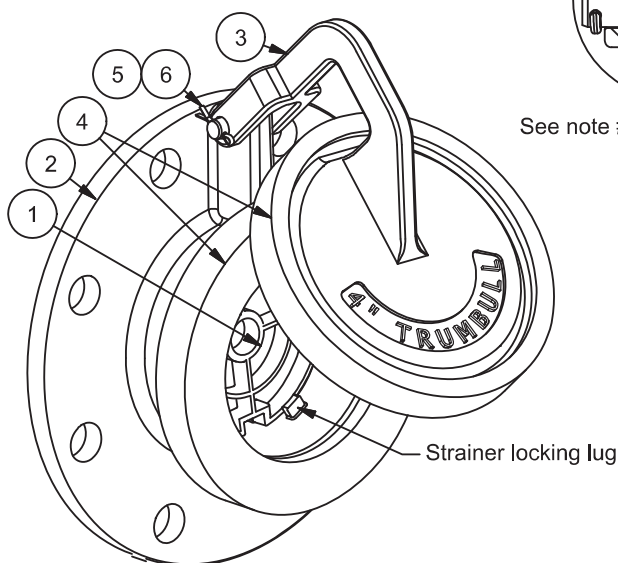
1.) Ductile Iron components are coated with Tnemec N140-1211 epoxy (complies with NSF 61).

2.) Ductile Iron valves have Isolating washers made of UHMWPE installed on the Clevis pin between the lid and body, preventing metal to metal contact.

Clevis Pin Detail



See note #2



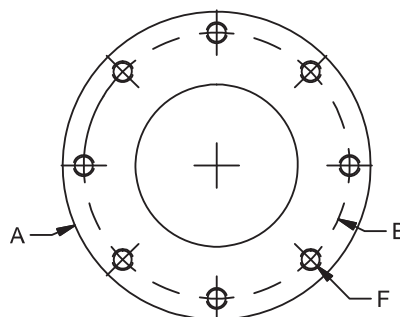
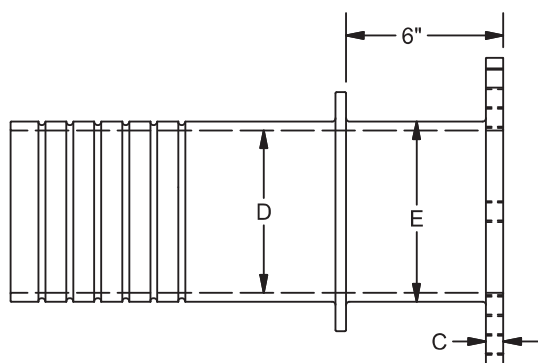
Size	Trumbull #	A	B	C	D	E	F	Weight
4"	367-1000	9"	7-1/2"	5/8"	4-3/16"	4.8"	5/8-11 UNC	34 lbs
6"	367-1002	11"	9-1/2"	5/8"	6.3"	6.9"	3/4"-10 UNC	47 lbs

#### Wall Pipe

Flange drilling per ANSI 125#

Material: Ductile Iron (65-45-12)

Coating: Tnemec N140-1211 epoxy



Drawn: Drawing Revision:

Date Rev. Date  
1/7/2013 A 2/16/2014

**TRUMBULL INDUSTRIES**

P.O. Box 1556  
1040 N. Meridian Rd.  
Youngstown, Ohio 44501

Drawn to Scale

**TANK PRESSURE RELIEF VALVE  
WALL TYPE**



# TRUMBULL

**TRUMBULL INDUSTRIES, INC.**

Phone: 330.799.3333 | 1040 N. Meridian Rd.  
Toll Free: 800.677.1799 | P.O. Box 1556  
Fax: 330.392.0756 | Youngstown, Ohio 44501

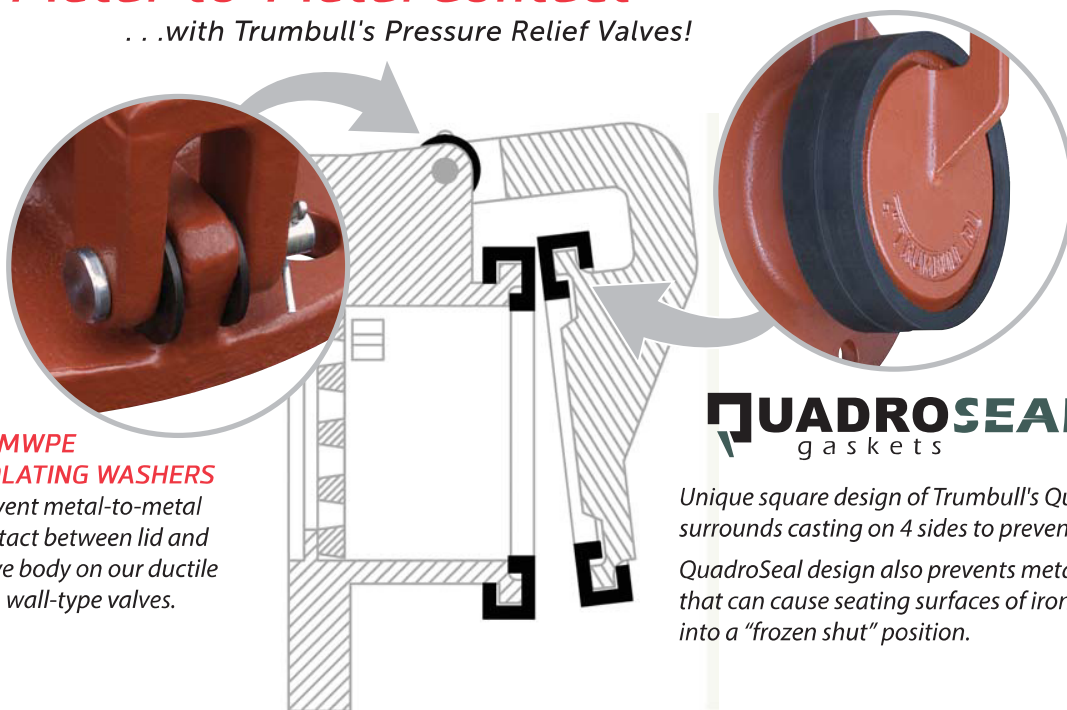
[www.trumbull-mfg.com](http://www.trumbull-mfg.com)

## No Metal-to-Metal Contact

...with Trumbull's Pressure Relief Valves!

### UHMWPE ISOLATING WASHERS

prevent metal-to-metal contact between lid and valve body on our ductile iron wall-type valves.



### QUADROSEAL gaskets

Unique square design of Trumbull's QuadroSeal Gasket surrounds casting on 4 sides to prevent separation.

QuadroSeal design also prevents metal-to-metal contact that can cause seating surfaces of iron valves to corrode into a "frozen shut" position.

Compare... to see why Trumbull is the BEST CHOICE!

### Trumbull Wall-Type PRV



with  
**QUADROSEAL**  
gaskets

Metal-to-metal contact is not possible between Trumbull seating surfaces!

### Alternate Design Wall-Type PRV (as removed from service)

Flap was "frozen shut" by corrosion; the rim is caked with debris that has hardened.

Valve after being pried open.



Inoperable valves cannot relieve groundwater pressure, leading to structural damage to tanks.

# TRUMBULL

**TRUMBULL INDUSTRIES, INC.**

Phone: 330.799.3333 | 1040 N. Meridian Rd.  
Toll Free: 800.677.1799 | P.O. Box 1556  
Fax: 330.392.0756 | Youngstown, Ohio 44501

[www.trumbull-mfg.com](http://www.trumbull-mfg.com)



## A Note About Strainers in Hydrostatic Tank PRV's

**Hello!**

I'M A STRAINER USED IN WALL AND FLOOR-TYPE TANK PRESSURE RELIEF VALVES. YOU MAY NOT THINK ABOUT ME VERY MUCH, BUT I AM **REALLY IMPORTANT!**

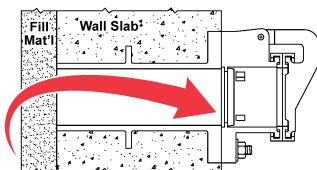
MY JOB IS TO KEEP ROCK OR GRAVEL FROM THE TANK EXTERIOR FROM INTERFERING WITH THE SEATING SURFACE. BUT YOU MUST REMOVE AND CLEAN ME PERIODICALLY. OTHERWISE, THE VALVE CAN GET PLUGGED UP AND THE GROUNDWATER WON'T BE ABLE TO FIND ITS WAY THROUGH THE VALVE INTO THE TANK. IF THAT HAPPENS, THE PRESSURE RELIEF VALVE CAN'T DO ITS JOB BY OPENING. THEN, THE HYDROSTATIC PRESSURE OF THE GROUNDWATER MIGHT DAMAGE THE TANK'S WALL OR CAUSE THE TANK TO FLOAT OUT OF ITS SETTING.

WHEN YOU INSTALL ME IN A WALL-TYPE VALVE, PLEASE PUT ME IN THE **VALVE**, NOT IN THE WALL PIPE. IF YOU PUT ME IN THE PIPE, SOMETIMES WORKERS CAN'T GET THEIR ARMS THROUGH THE VALVE AND HALFWAY INTO THE WALL PIPE. OCCASIONALLY, THEY HAVE TO REMOVE THE VALVE, JUST TO BE ABLE TO REACH ME!

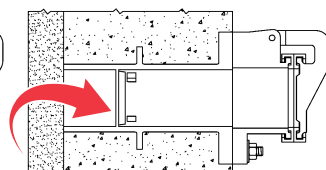
I WISH THE ENGINEERS THAT DESIGNED **THIS PLANT** WOULD HAVE USED VALVES THAT ARE EASIER TO MAINTAIN. I REALLY LIKE FIELD REPLACEABLE GASKETS THAT SURROUND THE BODY AND COVER, PREVENTING SEPARATION FROM THE VALVE. PLUS, THOSE SOFT RESILIENT GASKETS ALLOW A BETTER SHUTOFF ON SAND, SILT AND FINE GRAVEL, COMPARED TO IRON OR BRONZE SEATS.



### Importance of Strainer Location:



Strainer in **TRUMBULL** valve is easily accessed for maintenance



Strainer installation of other designs

Easy access to strainer helps prevent blockage of flow that could lead to structural tank damage. Wallpipes are frequently provided by ductile pipe suppliers and don't have strainers.

The accumulation of debris on seating surfaces can lead to leakage from the tank. To prevent that condition . . . specify a valve with an internal strainer!