

TRUMBULL

TRUMBULL INDUSTRIES, INC.

Phone: 330.799.3333 | 1040 N. Meridian Rd.
Toll Free: 800.677.1799 | P.O. Box 1556
Fax: 330.392.0756 | Youngstown, Ohio 44501

www.trumbull-mfg.com

Valve Box Risers

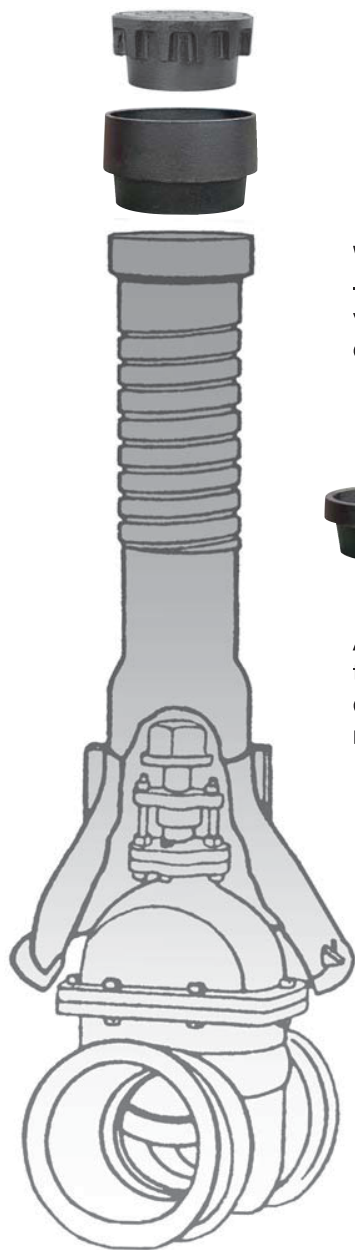
- Municipal Water Departments
- Private Water Companies
- Paving & Highway Contractors



When you have to raise existing valve boxes to the new grade of a road to be paved - **SAVE TIME AND MONEY** - Avoid needless breaking-up of old concrete to raise the valve box - **INSTEAD** use TRUMBULL VALVE BOX RISERS. Simply remove the existing valve box lid, insert the riser and place the existing lid into the riser.



ALL sizes of **TRUMBULL VALVE BOX RISERS** accept standard 5-1/4" lids; no need to purchase special 1" riser lids. All six sizes (1" through 6") fit into the top sections of Tyler, Bingham & Taylor, Opelika, Foundry, Central Foundry and many other manufacturers' valve boxes, and accept most of their lids as well.



VALVE BOX

Use 1", 1-1/2" or 2" Trumbull Riser inside 8" SDR 35 or C900 PVC pipe to form a Valve Box. Then add choice of Lid, per page B-3.

Trumbull Item No.	Size	Weight
367-5030	1"	6.00 lbs.
367-5031	1-1/2"	9.85 lbs.
367-5032	2"	9.75 lbs.
367-5034	3"	13.60 lbs.
367-5036	4"	19.20 lbs.
367-5038	6"	29.00 lbs.

Valve Box Risers for special sizes and shapes of valve boxes are available by special order. Minimum order quantities are required.

Important Product Info

Due to recent changes in the design of some manufacturer's valve box lids, primarily Tyler's, their redesigned lid will not fit properly in our 1" Riser. When it cannot be determined if the existing valve boxes being raised have the old or new style Tyler lid, we recommend purchasing Trumbull's Valve Box Lid (item #367-5044, shown on page B-3) with our 1" Riser. All other sizes of Trumbull Risers should fit with either Tyler's old or new Lid.

Please refer to separate sheets for "RITE-HITE" Paving Adapters, Valve Box Lids and Locking Valve Box Lids.

TRUMBULL

TRUMBULL INDUSTRIES, INC.

Phone: 330.799.3333 | 1040 N. Meridian Rd.
Toll Free: 800.677.1799 | P.O. Box 1556
Fax: 330.392.0756 | Youngstown, Ohio 44501

www.trumbull-mfg.com

"Rite-Hite" Adapters

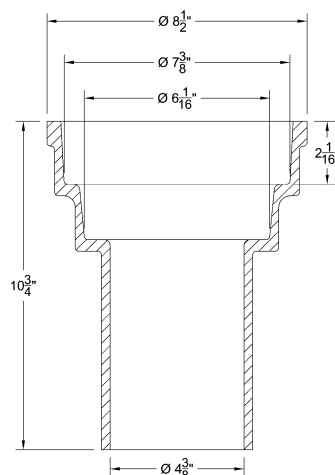
Slide-Type & Screw-Type

Provides a method for adjusting valve boxes to pavement level.



Slide-Type "Rite-Hite"

Trumbull Item No.	Adjustment Range	Weight
367-5050	2-1/2" - 8"	16.00 lbs.



Usage Recommendations for SLIDE-TYPE Adapters

- If the existing valve box is too low, place the "RITE-HITE" inside the existing box, pour stiff cement mortar around it and push down until the "RITE-HITE" is flush with the pavement surface.
- If the existing valve box is too high, break off the top of the valve box and insert the "RITE-HITE". Then pour stiff cement mortar around it and push down until the "RITE-HITE" is flush with the pavement surface.

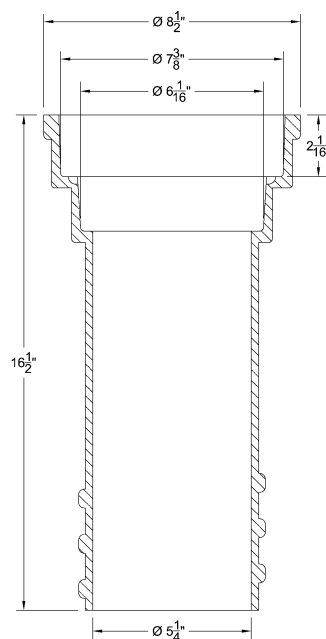


Screw-Type "Rite-Hite"

Paving Adapter No. T-69

This type adapter screws into the top section of the valve box.

Trumbull Item No.	Adjustment Range	Weight
367-5060	2-1/2" - 8"	25.00 lbs.



Adjustable adapters accept standard valve box covers, as made by Bingham & Taylor, Central Foundry, Tyler, etc.

Please refer to the separate product literature sheets for Valve Box Risers (1", 1-1/2", 2", 3", 4" and 6"), and for Trumbull Valve Box Lids.

TRUMBULL

TRUMBULL INDUSTRIES, INC.

Phone: 330.799.3333 | 1040 N. Meridian Rd.
Toll Free: 800.677.1799 | P.O. Box 1556
Fax: 330.392.0756 | Youngstown, Ohio 44501

www.trumbull-mfg.com

Valve Box Lids

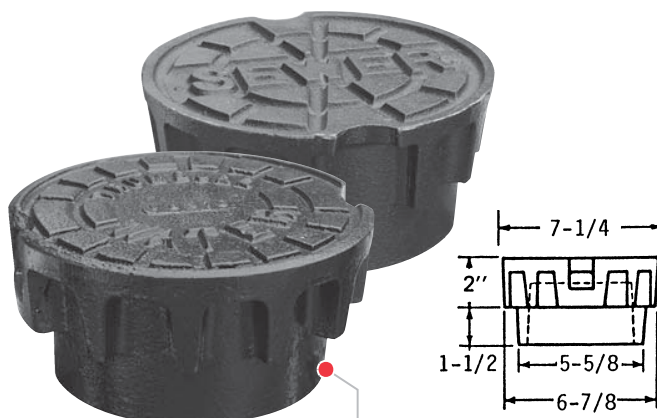
Standard & Locking Types

Standard Valve Box Lids

For 5-1/4" shaft Buffalo style valve boxes, TRUMBULL risers, "RITE-HITE" adapters, and Housing Adapters for Trumbull Valve Position Indicators.

Trumbull Item No.	Lettering	Weight
367-5044	WATER	13.00 lbs.
367-5046	SEWER	11.00 lbs.
367-5048	GAS	12.85 lbs.
367-5049	NON-POTABLE WATER	12.85 lbs.

Special lettering available! Call us for more details.



LONG SKIRT
helps keep the lid from popping out of the valve box

Locking Valve Box Lid

Locking Lids discourage unauthorized access to valve boxes. Tightening the standard brass pentagon screw causes the jaws to expand, bearing against inside of valve box.

Trumbull Item No.	Size	Lettering	Weight
367-5045	5-1/4"	WATER	12.00 lbs.

Usage Recommendation

Inside dimensions of valve boxes will vary by manufacturer. If lid is not tight enough, flip the wedge for a tighter fit.



Please refer to the separate product literature sheets for "RITE-HITE" Adapters, Valve Box Risers (1", 1-1/2", 2", 3", 4" and 6"), and Valve Position Indicators.

TRUMBULL

TRUMBULL INDUSTRIES, INC.

Phone: 330.799.3333 | 1040 N. Meridian Rd.
Toll Free: 800.677.1799 | P.O. Box 1556
Fax: 330.392.0756 | Youngstown, Ohio 44501

www.trumbull-mfg.com

Curb Box Repair Lids

Inside & Outside Types



Trumbull **CURB BOX REPAIR LIDS** solve all these problems on 2-1/2" and 3" Buffalo style curb boxes.

Repair Lids should be ordered based on the style of curb box that you are using (inside or outside style). Please note that old (outside style) curb boxes are still in production.

To install, insert the two jaws into the shaft and tighten the screw. The jaws expand to bear against the inside of the curb box. Designed to fit most makes of curb boxes, both old and new. Outside Repair Lids also work on most makes of inside style Curb Boxes; however, inside Repair Lids only work on inside style Curb Boxes.

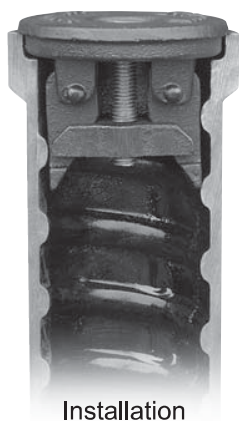
Also available, T-372 Repair Lid for recessed installation in outside style curb boxes.

NEW Tamper-Resistant Screw Type Repair Lids

Secure your curb boxes from vandalism or unauthorized access. The unique keyway can be operated only with a matching key available from Trumbull. The locking option offers a high level of security for your curb boxes, preventing unauthorized operation.

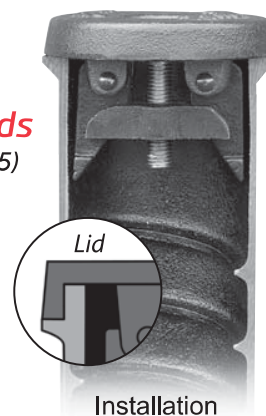


Inside Repair Lid New Style (T-373)



Installation

Outside Repair Lids Old Style (T-374 & T-375)



Installation

Trumbull Item No.	Model No.	Size	Screw Type	Weight
367-4281	T-373	2-1/2"	Brass Pentagon	2.45 lbs.
367-4400	T-373	2-1/2"	Tamper-Resistant*	2.45 lbs.

* Requires key 367-4403 to operate, shown below.

Lock Key

for Trumbull tamper-resistant screws



Trumbull Item No.	Weight
367-4403	0.15 lbs.

Trumbull Item No.	Model No.	Size	Screw Type	Weight
367-4282	T-374	2-1/2"	Brass Pentagon	2.30 lbs.
367-4401	T-374	2-1/2"	Tamper-Resistant*	2.30 lbs.
367-4283	T-375	3"	Brass Pentagon	3.45 lbs.
367-4402	T-375	3"	Tamper-Resistant*	3.45 lbs.

* Requires key 367-4403 to operate, shown on left.

TRUMBULL

TRUMBULL INDUSTRIES, INC.

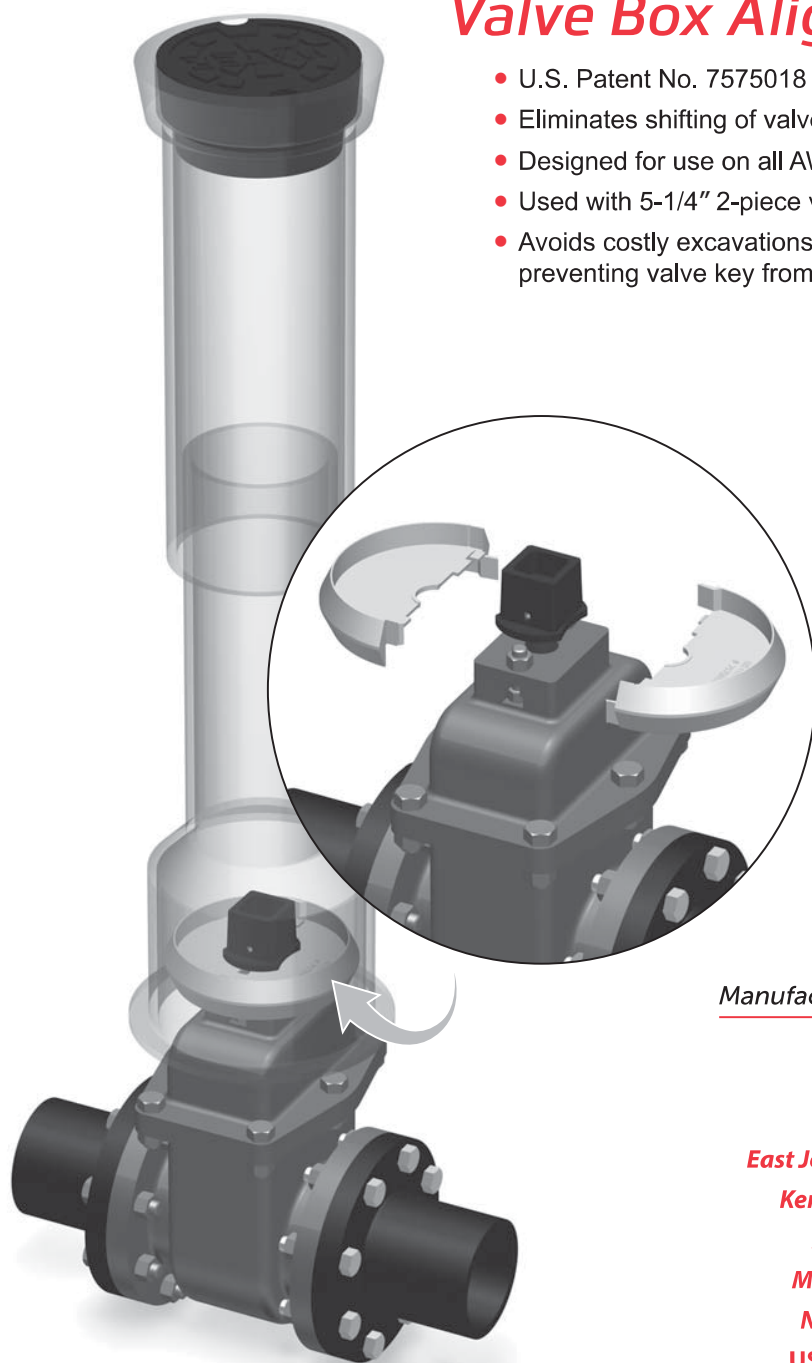
Phone: 330.799.3333 | 1040 N. Meridian Rd.
Toll Free: 800.677.1799 | P.O. Box 1556
Fax: 330.392.0756 | Youngstown, Ohio 44501

www.trumbull-mfg.com



Valve Box Alignment Device

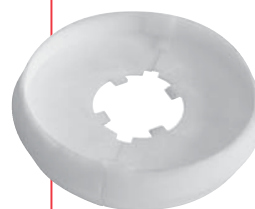
- U.S. Patent No. 7575018 and 8430116
- Eliminates shifting of valve box during backfill.
- Designed for use on all AWWA resilient wedge gate valves.
- Used with 5-1/4" 2-piece valve boxes.
- Avoids costly excavations when valve box shifts, preventing valve key from engaging the 2" square nut.



Ordering Instructions

1. Quantity required.
2. Order model required, using the chart below.

Model	Trumbull Item No.	Weight
#1	367-4850	0.30 lbs.
#2	367-4851	0.40 lbs.



Model #1



Model #2

Valve Manufacturer	Valve Size						
	2"	3"	4"	6"	8"	10"	12"
AFC	2	2	2	2	2	1	1
AVK	1	1	1	1	1	1	1
Clow	2	2	2	2	2	K1	K1
East Jordan	2	2	2	2	2	2	1
Kennedy	2	2	2	2	2	K1	K1
M & H	2	2	2	2	2	K1	K1
Mueller	2	2	2	2	2	2	1
NAPAC	2	2	2	2	2	2	2
US Pipe	2	2	2	2	2	2	2