

# SENTRY COOLING WATER ANALYSIS PANELS

## Steam and Water Analysis Systems

### SAMPLE CONDITIONING

Sentry Cooling Water Analysis Panels are fully integrated sample-analysis packages for cooling and circulating water systems. These systems help ensure representative samples are provided to the analyzers and simplify installation, operation and maintenance.

These fully integrated panels allow representative samples to be obtained from your cooling water or recirculating water systems. These panels provide simple, turnkey installation and full integration of your cooling water analyzers. To operate, connect your sample inlet, power, and drain. Once connected, you are ready to measure the required samples in a central location.

Sentry cooling water panels come in a variety of configurations to create custom sample systems. Both freestanding and wall mountable racks are available with or without enclosures. Solutions are entirely engineered to meet the application requirements

### MODEL

CWAP

### BENEFITS

Sentry cooling water panels come in a variety of configurations to create custom sample systems. Both freestanding and wall mountable racks are available with or

### FEATURES

- Integration of analyzers or other required components (controllers, timers, etc.) included
- Typical analyses include Chlorine, pH, conductivity, ORP, turbidity, and TOC
- Grab sampling capability with sink built-in
- The system comes with complete mechanical and electrical documentation
- Pressure, flow, and temperature limits are design specific
- Create a complete sample system with analyzers and conditioning on the same rack
- Use the backside of a freestanding floor rack to mount analysis equipment
- Portable systems available
- Customization is available to meet your specific requirements. Available options include:
  - Multiple analyses or stand-alone panels
  - Optional shelf for portable lab analyzers used in grab sampling
  - Blowdown function
  - Optional enclosures rated IP65, NEMA4 or NEMA4X
  - Vortex cooling or heated cabinets



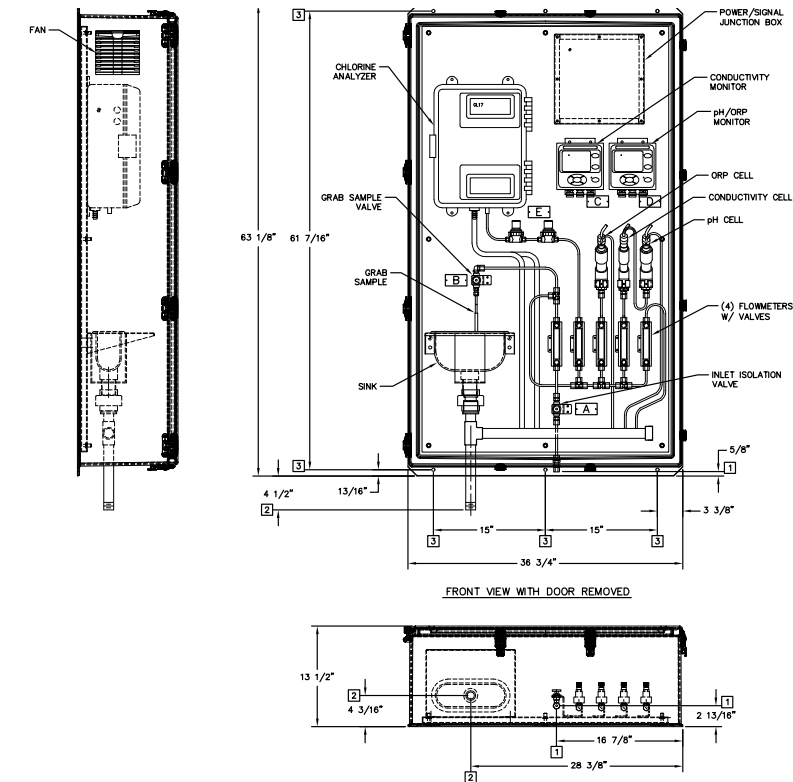
Front View: Cooling Water Analyzer



Angled View: Cooling Water Analyzer Panel

Sample. Monitor. Measure.





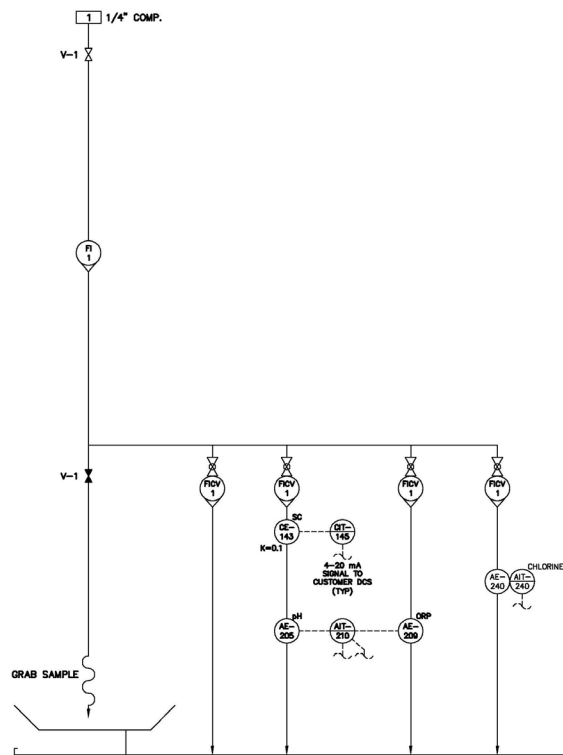
#### CUSTOMER CONNECTIONS

1. SAMPLE INLET: 1/4" COMP. (POLYPROPYLENE)
2. DRAIN: 1" MNPT (CPVC)
3. Ø 7/16" MOUNTING HOLES FOR 3/8" BOLT

APPROXIMATE SHIPPING WEIGHT: 300 lbs.

FLUID DESCRIPTION
DESIGN/EXPECTED PRESSURE
PSIG
DESIGN/EXPECTED TEMPERATURE
°F
DESIGN/EXPECTED FLOW
cc/min

CIRCULATING WATER
80/37
105/53
1300



#### Process Temperature

S	Standard (Process Temperature <140F)
C	Cooler Installed ( Process Temperature >140F )

#### Process Pressure Range

1	0-100 psi Inlet Pressure Gauge
2	0-200 psi Inlet Pressure Gauge
3	0-300 psi Inlet Pressure Gauge
6	0-600 psi Inlet Pressure Gauge
Q	Other (Specify)

#### Materials of Construction

S	Stainless Steel
Q	Special (Specify)

#### Options

PS	PipeStand (2")
PBI	Process Isolation Valve (Inlet)
WR	Wall Mount Rack
ENC	Mounted in Enclosure
PM	Sample Pump
PX	Include Signal Relays or Timers
SFI	Sight Flow Indicator
OA	Include Online Analysis » pH, Conductivity, Chlorine, ORP, TOC, Phosphate, or Other Analysis

