



MODEL MCL Closed Loop Cylinder Sample Panel

Safe and Accurate Sampling for Liquids



CLOSED LOOP CYLINDER SAMPLE PANEL

Features

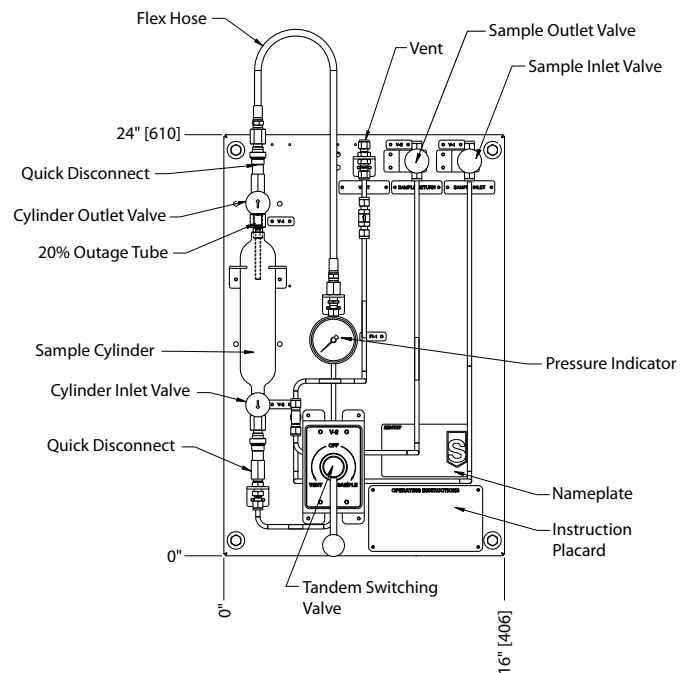
- A continuous flow of sample assures representative sample
- Tandem switching valve integrates multiple functions into one device
- Ergonomic design reduces turning torque and eliminates repetitive wrist action
- Quick disconnects allow for easy removal and transportation of the sample cylinder
- Self-sealing quick disconnect fittings prevent leakage when cylinder is removed
- Variety of configurations to meet any LPG or liquid sampling need

Options

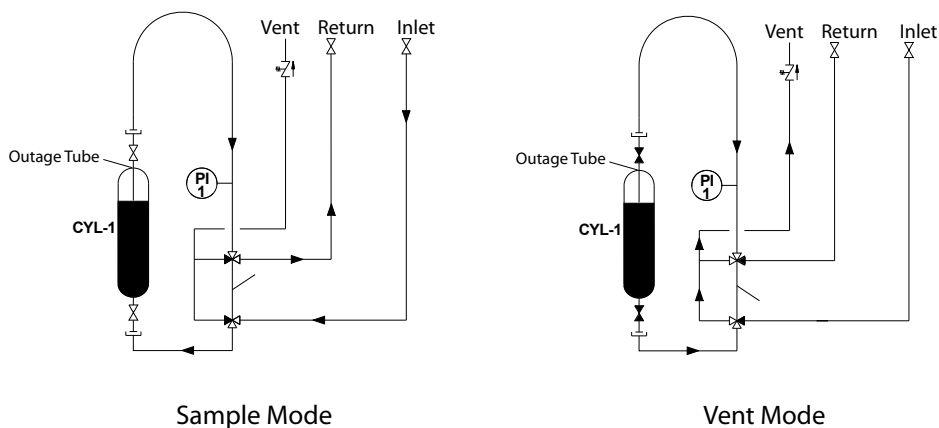
- Connection sizes range from 1/4–1/2" (8–15 mm), and are compression, socket weld, flanged or NPT
- All available sample cylinders include shutoff valves and quick disconnects

Description

Closed loop cylinder sampling is the most effective way to take and transport liquid or 2-phase liquid samples. By purging the sample path and the sample panel during each sample cycle, representative sample is assured within the cylinder. As well, purging of the sample panel after the sample is secured provides for maximum operator safety and minimum loss of sample vapors to the environment.



CLOSED LOOP CYLINDER TECHNICAL DATA



EXAMPLE OF CYLINDER SAMPLER FOR LIQUIDS

Off Mode (insert cylinder) – The switching valve handle is turned to the off position blocking both side ports on both 3-way valves on the switching valve. There is no flow through the sampler.

Sample mode – The switching valve handle is turned to the sample position and sample now flows through the sampler and the connected sample cylinder. This is essentially a purging/filling process.

Isolate mode – Sample is isolated in the cylinder by closing the cylinder valves. The outlet cylinder valve (top valve) must be closed first if the sample needs to be maintained at system pressure.

Vent mode – The switching valve handle is turned to the vent/depressurize position and all sample liquids in the sampler lines on either side of the sample cylinder are vented to a low pressure (flare/vent header or local liquid recovery device).

Off mode (remove cylinder) – The switching valve handle is turned to the off position blocking both side ports on both 3-way valves on the switching valve. Since the sampler lines are vented, disconnecting the cylinder is safely accomplished at atmospheric or sub-atmospheric pressure at the QDCs without contamination to the operator or the environment.

SPECIFICATIONS

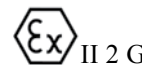
Materials of construction	304 stainless steel backplate; 316 or 304 SS cylinders
Wetted materials	316 stainless steel and PTFE
Standard pressure rating	1800 psi (125 bar)
Standard temperature rating*	up to 300° F (149° C)

*Higher temperatures available — consult factory

Options: sample cooler, in-line filter, cooling water valves, carbon canister, check valves, nitrogen purge, flow indicator, cylinder relief valve, rupture disc, pipe stand, heater, and enclosures



It is solely the responsibility of the end-user, through its own analysis and testing, to select products and materials suitable for their specific application requirements, ensure they are properly installed, safely applied, properly maintained, and limit their use to their intended purpose. Improper selection, installation, or use may result in personal injury or property damage.



SENTRY EQUIPMENT CORP

966 Blue Ribbon Circle North
Oconomowoc, WI 53066 USA
Tel: 262-567-7256 • Fax: 262-567-4523

E-mail:
sales@sentry-equip.com

Website:
www.sentry-equip.com



For further information, contact:

Rometec srl

Via Alessandro Minuziano, 87 - 89
00128 - Roma
Tel 06-5061635 Fax 065061542
P.Iva 0412062100
www.rometec.it