



Liquid & Slurry

Solid & Powder

Steam & Water

SENTRY COBRA DT SAMPLER Low Emission Samplers

MANUAL SAMPLING

The Sentry® Cobra DT closed loop sampler is designed to perform a detector tube measurement as safely, quickly and efficiently as possible. The Cobra DT sampler is designed with safety in mind, with a high-pressure regulator providing operators with a means to lower pressure to a safe level before inserting the detector tube. The 1000 cc cylinder allows a large volume of gas to be chambered so the operator can draw a fresh sample through the detector tube allowing a representative measurement to be collected.

MODEL

Cobra DT

BENEFITS

The key challenges in securing an accurate, representative sample are addressed while making the process itself simpler for the operator. Our unique Teflon® detector tube fitting makes it easy to insert detector tubes and obtain a representative spot measurement. The sampler is ideally suited for use in the petrochemical, natural gas, and specialty gas industries.

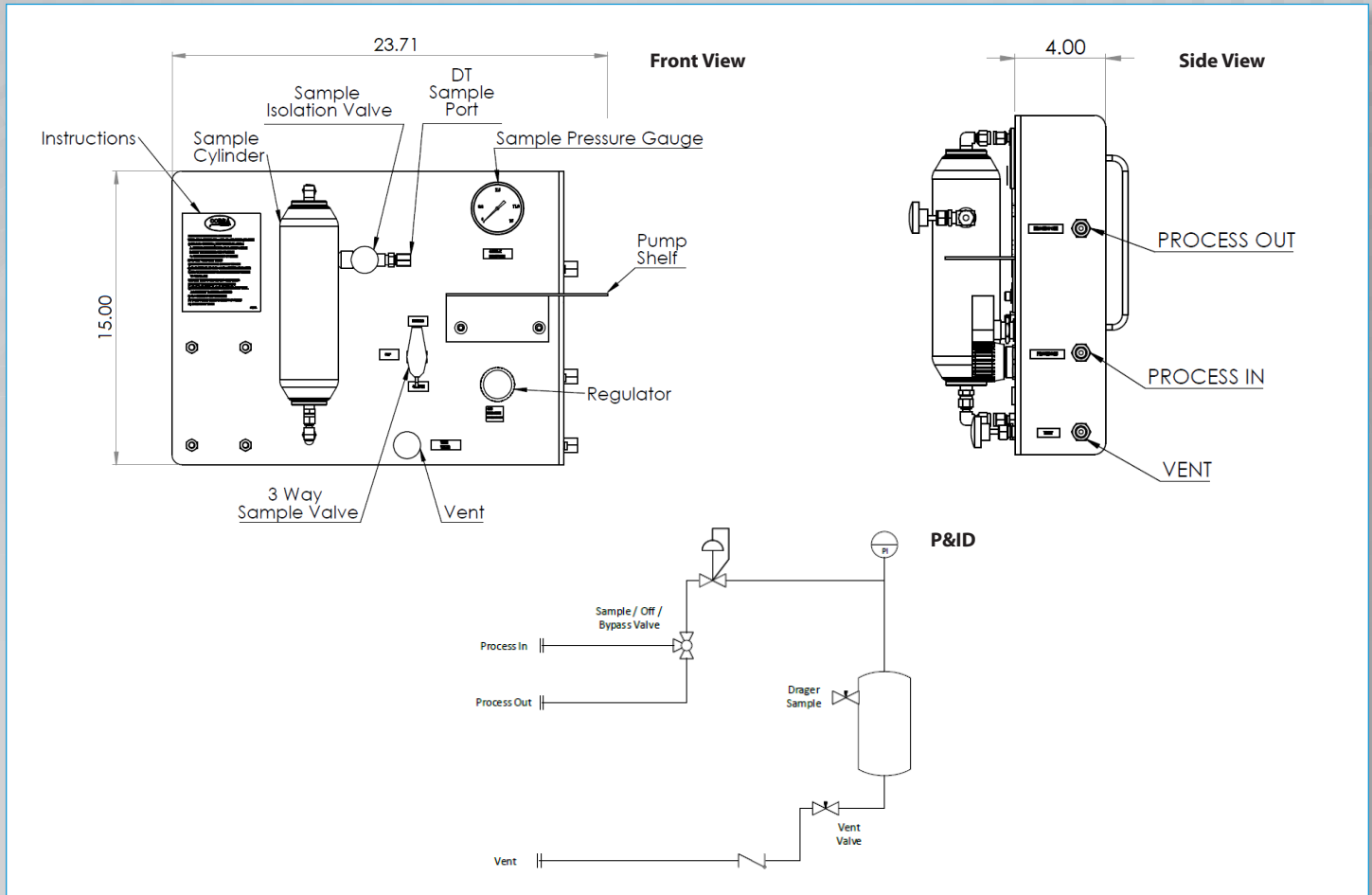
FEATURES

- Unique Teflon detector tube insert protects operator during sampling process
- High-pressure regulator and pressure gauge allow operator to regulate pressure to safe range prior to sampling
- Large volume chamber provides ample volume during draw through detector tube
- Step-by-step instruction tag and valve labels for simple operation
- Side connections are labeled for ease of installation
- For gas applications, including toxic gases measured with detector tube



Sample. Monitor. Measure.

 **SENTRY**



SPECIFICATIONS

wetted materials	body: 316 stainless steel (Alloy 400 and other materials available upon request) O-rings: Viton® or Kalrez®
process pressure range	0-3000 psi
process temperature	<140°F; cooler required for temps >140°F
sampler interface	1/4 in NPT (compression fitting available upon request)
vent connection	1/4 in NPT (compression fitting available upon request)
sample cylinder	300 cc, 500 cc, or 1000 cc
options	pipe stand (2 in); dual pipe stand for mounting cooler; enclosure process isolation valves (inlet and/or return) sample pump return to vent (flare; emission filter)

sentry-equip.com

966 Blue Ribbon Circle North, Oconomowoc, WI 53066 U.S.A. | +1-262-567-7256 | sales@sentry-equip.com

© 2018 Sentry Equipment Corp. All rights reserved. Sentry is a registered trademark of Sentry Equipment Corp. All product and company names are property of their respective owners. It is solely the responsibility of end users, through their own testing and analysis, to select products and materials suitable for their specific application requirements, ensure they are properly installed, safely applied and properly maintained, and to limit their use to their intended purpose. Improper selection, installation or use may result in personal injury or property damage.



COMPANY WITH
QUALITY SYSTEM