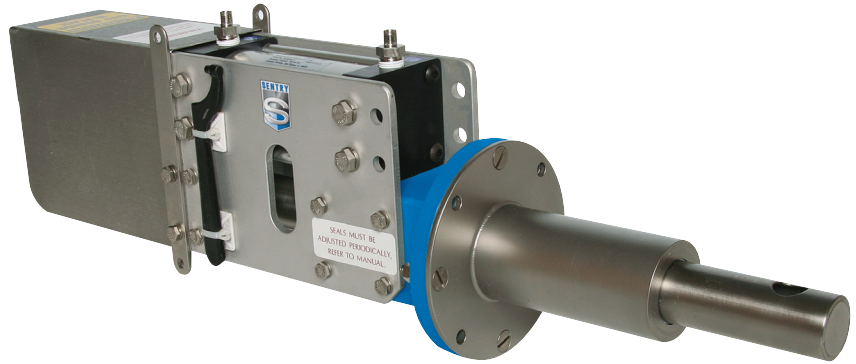




*The  
Sampling  
Connection*



## MODEL RX AUTOMATIC SAMPLER

### ***Automatically Samples Free-Flowing Materials and Slurries***

#### ***Features***

- Compact and low maintenance
- No moving parts in conveyance of sample to container; keeps consistent product characteristics
- 316 stainless steel construction of material-contact surfaces
- Versatile installation in drop chutes, bins, hoppers, pipes or air slides

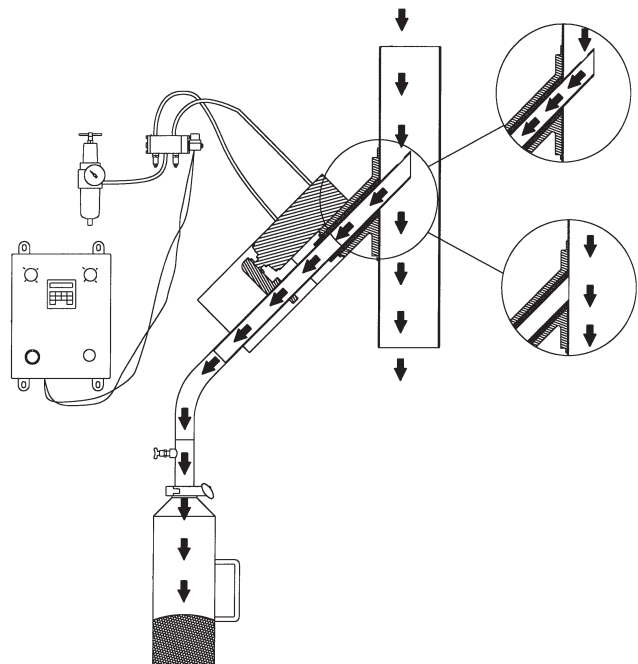
#### ***Options***

- Custom mounting adapters for round, square or other-shaped chutes or bins
- Special hardened construction materials or special coated contact parts available

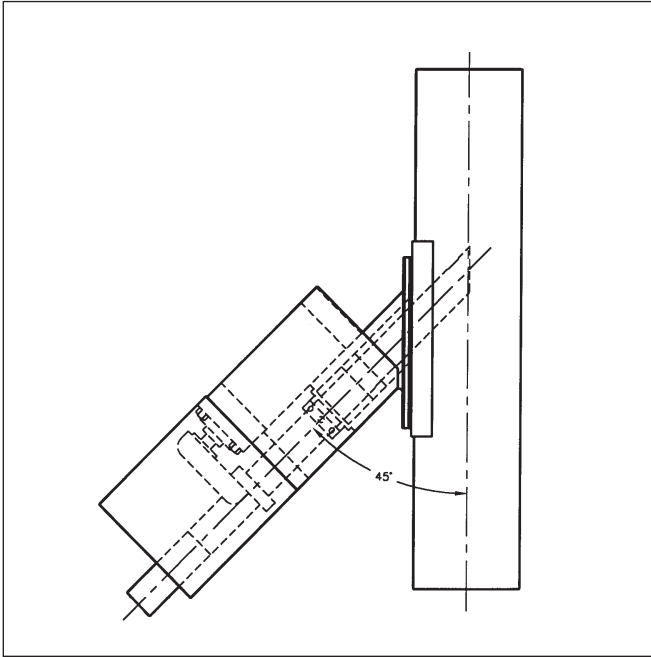
#### ***Description***

The Model RX sampler is designed for automatic strip sampling of materials such as free-flowing powders, granules, pellets, grain and seed. Samples can be drawn from positive or negative, horizontal or vertical dilute-phase pneumatic conveying systems as well as bins, gravity spouts or hoppers.

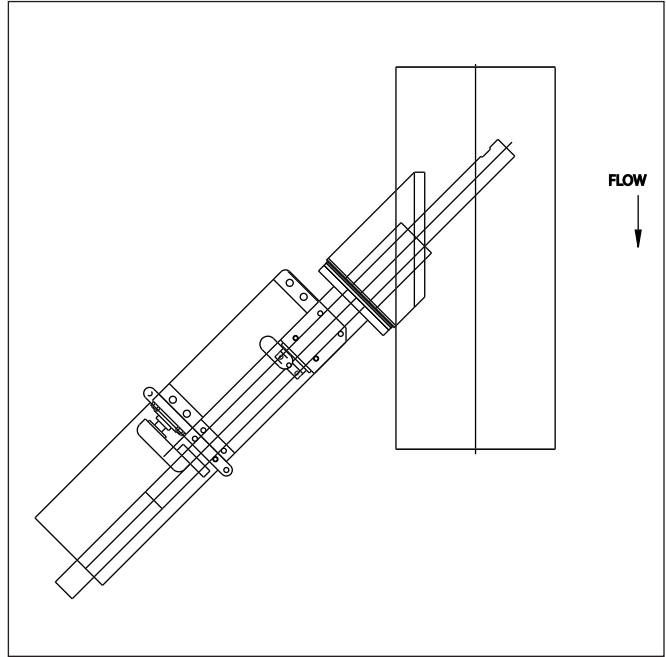
The Model RX features a solenoid operated air cylinder. The air cylinder extends the sample tube into the process line. While in line, the tube is continually taking sample and discharging it to the collection point.



## MODEL RX TECHNICAL DATA



**RX 45**



**RX 90**

## SPECIFICATIONS

|                                |   |
|--------------------------------|---|
| Basic Electrical Requirements  | 115 VAC, single phase, 60 Hz  |
| Air Requirements               | 60 psi minimum  |
| Quantity of Sample             | determined by flow rate, aperture size and time in line   |
| Suggested Discharge Connection | flexible plastic tubing to a collection container included  |
| Materials of Construction      | aluminum housing; 316 stainless steel tube; Teflon® seals   |
| Control Package                | control meets NEMA 4X classification and allows for fully automatic sampling;<br>custom and NEMA 7, 9 applications upon request |

### **WARNING**

It is solely the responsibility of the end-user, through its own analysis and testing, to select products and materials suitable for their specific application requirements, ensure they are properly installed, safely applied, properly maintained, and limit their use to their intended purpose. Improper selection, installation, or use may result in personal injury or property damage.



### **SENTRY EQUIPMENT CORP**

PO Box 127  
Oconomowoc, WI 53066 USA  
Phone: 262-567-7256  
Fax: 262-567-4523

**E-mail:**  
sales@sentry-equip.com

**Website:**  
www.sentry-equip.com

For further information, contact:

***Rometec srl***

Via Alessandro Minuziano, 87 - 89

00128 - Roma

Tel 06-5061635 Fax 065061542

P.Iva 0412062100

**www.rometec.it**