



*The  
Sampling  
Connection*



## MODEL RB AUTOMATIC SAMPLER

### **Automatic Sampler for Free-Flowing and Non-Free-Flowing Materials**

#### **Features**

- Close tolerance (0.003" / 0.0008 cm) between the sample tube and auger allows product cleanout
- Tube retracts from the line so there is no restriction in the product flow
- Product contact materials are 304 stainless steel and Teflon<sup>®</sup> seals

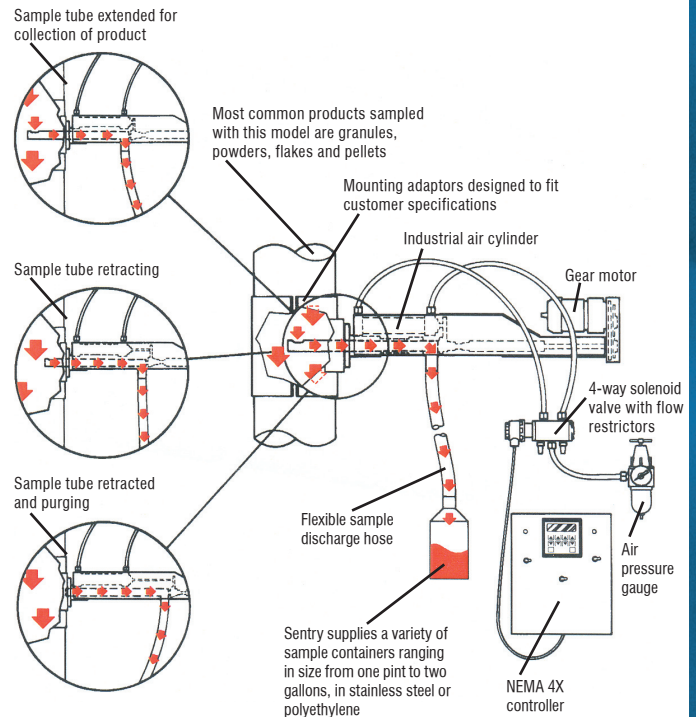
#### **Options**

- Custom mounting adapters for round, conical, angular and other configurations
- Pressurized containers for pneumatic lines up to 15 psig
- Custom construction materials
- Available in stroke lengths from 4" / 10 cm to 8" / 20.3 cm
- Nickel-impregnated Teflon<sup>®</sup> for a non-stick surface
- Hardening treatments to protect against wear and abrasion

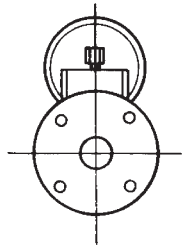
#### **Description**

The Model RB is designed for automatic strip sampling of free-flowing and non-free-flowing materials (granules, powders, flakes and pellets) from spouts, hoppers, transfer chutes and pneumatic conveying lines up to 15 psig. Allows product sample to be continuously discharged while sample tube is fully extended.

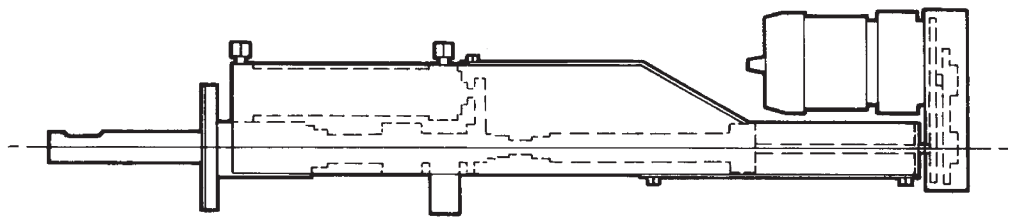
The Model RB samples when a solenoid-controlled air cylinder extends a slotted sampling tube into the process line. A representative sample collects by a gearmotor-driven auger to the discharge point.



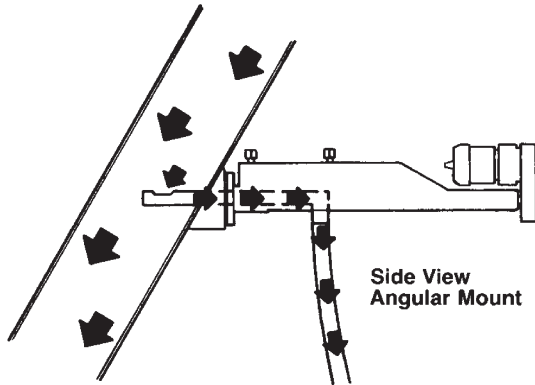
## MODEL RB TECHNICAL DATA



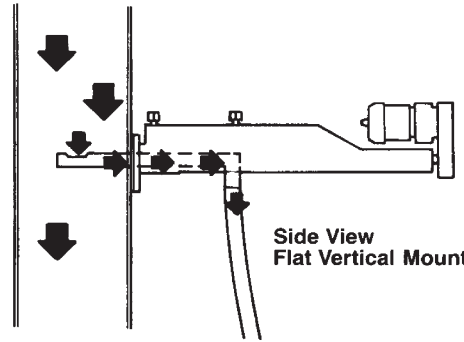
FRONT VIEW



SIDE VIEW



Side View  
Angular Mount



Side View  
Flat Vertical Mount

## SPECIFICATIONS

Basic Electrical Requirements . . . . .	115 VAC, single phase, 60 Hz; control box fused to 2 amps; optional 220 VAC, single phase, 50/60 Hz; garmotor – 1/6 hp or 1/15 hp, 220 VAC, single phase, 50/60 Hz @30 rpm; explosion-proof – 1/20 hp, 115 VAC, single phase, 60 Hz 92:1 ratio @19 rpm;
Air Requirements . . . . .	80 psig, 1.5 cfm per cycle
Quantity of Sample . . . . .	determined by flow rate, aperture size and time in line
Product Size . . . . .	10 micron to 1/4" / 6 mm; larger sizes upon request
Recommended Location of Sampler . . . . .	vertical gravity lines
Suggested Connection to Collection Point . . . . .	rigid metal or flexible tubing to a collection container or multi-position collection cabinet
Materials of Construction . . . . .	aluminum housing and stainless steel sample tube
Temperature Range . . . . .	up to 250°F / 121°C

### ⚠WARNING

It is solely the responsibility of the end-user, through its own analysis and testing, to select products and materials suitable for their specific application requirements, ensure they are properly installed, safely applied, properly maintained, and limit their use to their intended purpose. Improper selection, installation, or use may result in personal injury or property damage.



### SENTRY EQUIPMENT CORP

PO Box 127  
Oconomowoc, WI 53066 USA  
Phone: 262-567-7256  
Fax: 262-567-4523

**E-mail:**  
sales@sentry-equip.com

**Website:**  
www.sentry-equip.com

For further information, contact:

**Rometec srl**

Via Alessandro Minuziano, 87 - 89

00128 - Roma

Tel 06-5061635 Fax 065061542

P.Iva 0412062100

**www.rometec.it**

*The Sampling Connection*