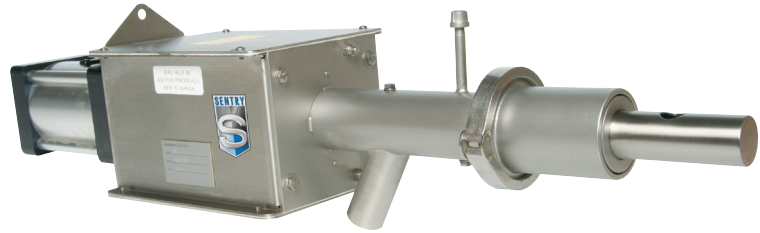




*The
Sampling
Connection*



MODEL PR AUTOMATIC SAMPLER

Automatically Samples from Dilute and Dense Phase Convey Lines

Features

- Designed to eliminate the degradation of product
- Includes 316 stainless steel tube and stainless steel body, filter/regulator and gauge, Teflon® seals, and maintenance-free industrial air cylinder
- Fully retracting sample tube will not restrict product flow between sample cycles
- 1/8" NPT capped purge nipple for sample tube cleanout

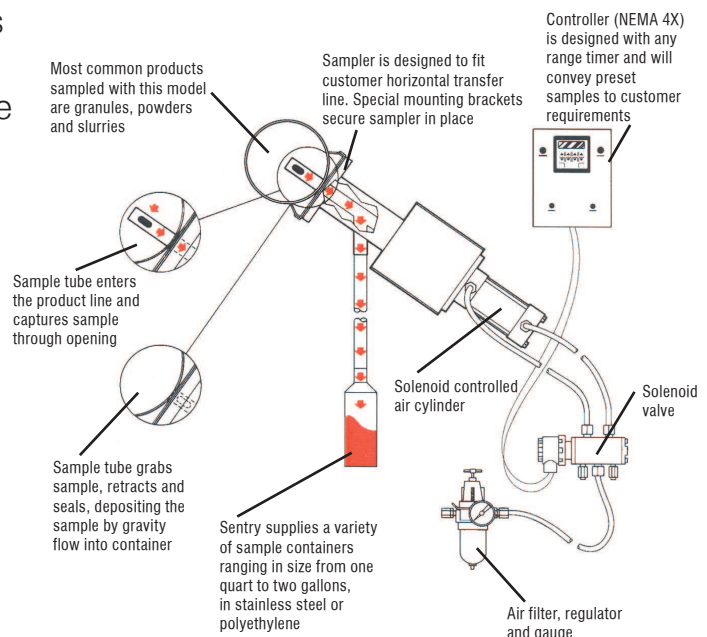
Options

- Sample tube in stroke lengths of 4", 6" and 8"
- Nosepiece for vertical applications
- Nickel-impregnated Teflon® for a non-stick surface
- Hardening treatments to protect against wear and abrasion

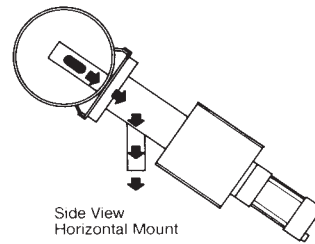
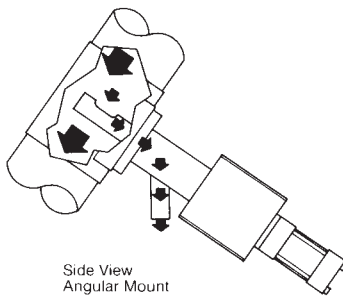
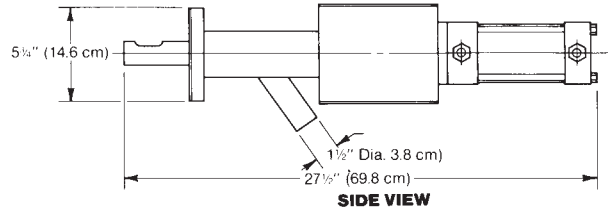
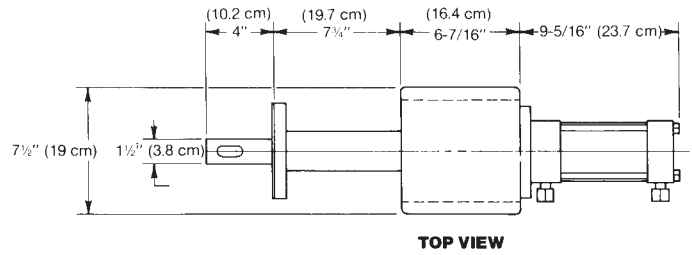
Description

The Model PR is designed for spot sampling of free-flowing materials in dilute and dense phase horizontal pneumatic transfer lines. Rapid cycling acquires a large volume of sample over a short period of time. The Model PR is also recommended for slurry sampling.

The Model PR samples when a solenoid-controlled air cylinder operates a reciprocating probe in the product flow. A representative sample collects by gravity to the discharge point.



MODEL PR TECHNICAL DATA



SPECIFICATIONS

Basic Electrical Requirements	115 VAC, single phase, 60 Hz; control box fused to 2 amps
Air Requirements	80 psig, 1.5 cfm per cycle
Quantity of Sample	14 in ³ / 230 cc
Product Size	10 micron to 1/4"; larger sizes upon request
Recommended Sampler Location	bottom wall of horizontal lines 10'–12' (304.8 cm–365.8 cm) from any elbow
Suggested Connection to Collection Point	rigid metal or flexible tubing to a collection container or multi-position collection cabinet
Materials of Construction	304 and 316 stainless steel
Temperature Range	up to 250°F / 121°C

WARNING

It is solely the responsibility of the end-user, through its own analysis and testing, to select products and materials suitable for their specific application requirements, ensure they are properly installed, safely applied, properly maintained, and limit their use to their intended purpose. Improper selection, installation, or use may result in personal injury or property damage.



SENTRY EQUIPMENT CORP

PO Box 127
Oconomowoc, WI 53066 USA
Phone: 262-567-7256
Fax: 262-567-4523

E-mail:
sales@sentry-equip.com

Website:
www.sentry-equip.com

For further information, contact:

Rometec srl

Via Alessandro Minuziano, 87 - 89
00128 - Roma
Tel 06-5061635 Fax 065061542
P.Iva 0412062100
www.rometec.it

The Sampling Connection