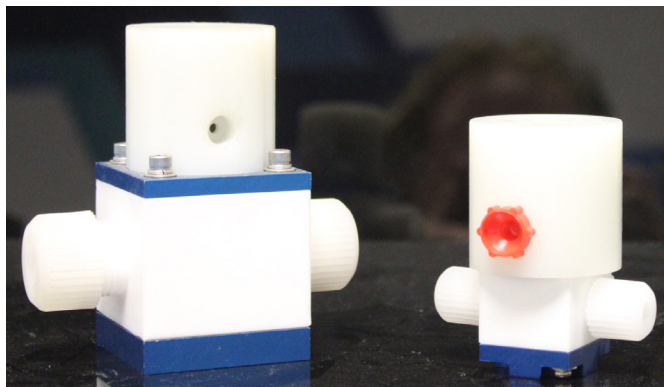


TEFLON DIAPHRAGM VALVE



NACOM'S S series and M series PTFE TEFLON PNEUMATIC DIAPHRAGM VALVES. Both series types are available in 2way & 3way configurations. Bodies and Diaphragms are fabricated from virgin grade PTFE TEFLON which offers superior resistance against corrosion and contamination in aggressive process media including hot acid solutions.

Specifications

SPECIFICATION		2WAY NC	2WAY NO	3WAY
VACUUM		1 MICRON	1 MICRON	1 MICRON
	INLET PORT (COMMON)	40 PSI	40 PSI	40 PSI
MEDIA PRESSURE	OUTLET PORT	20 PSI	20 PSI	N/A
	NO PORT	N/A	N/A	20 PSI
	NC PORT	N/A	N/A	20 PSI
OPERATOR PRESSURE		45-65 PSI	45-65 PSI	45-65 PSI
MEDIA TEMPERATURE		-50 degrees C to +100 C	-50 degrees C to +100 C	-50 degrees C to +100 C
AMBIENT TEMPERATURE		-50 degrees C to +100 C	-50 degrees C to +100 C	-50 degrees C to +100 C
CV	1/16" S SERIES	.03	.03	.03
	1/8" M SERIES	.18	.18	.18
	1/4" M SERIES	.75	.75	.75
	3/8" M SERIES	1.9	1.9	1.9

Fail Safe Operation allows valve to close in event facilities air pressure malfunctions.

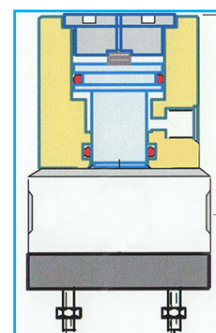
Easy installation due to small size and light weight

Wide selection of configurations, including Teflon, Viton, or Kalrez seating types. Individual valves or Multi-valve Manifolds.

S SERIES PRESSURE RATING : 30 PSI

M SERIES PRESSURE RATING : 40 PSI

Round Body



Nacom's PTFE Pneumatic Diaphragm valves.

With two series types available- Both types available in 2way open, 2way closed, and 3 way configurations. **S series** available with oring seat only and **M series** available in oring seat or Teflon seat to choose from

S series with orifice sizes ranging from .060 diaup to .090 diameter.

Pressure rating : 30 psi

M series with orifice sizes ranging from .125 dia up to .375 diameter.

Pressure rating : 40 psi

Both series types have a pilot pressure rating of 45-55 psi

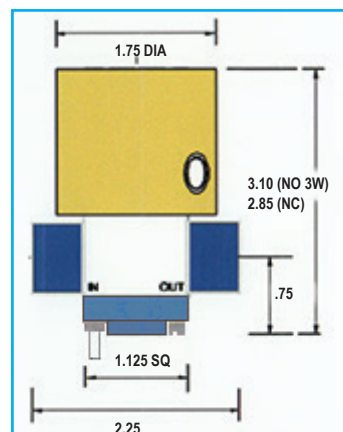
S series are available in 1/4-28 & 1/8 fnpt round body, and 1/8" tube and 1/8" fnpt in square body

M series are available with 1/8" up to 1/4" fnpt round body and 1/8" thru 3/8" fnpt, or tube square body. 1/4" thru 3/8" flared square body

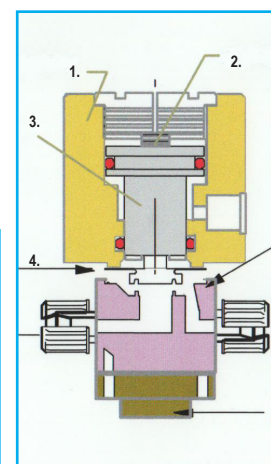
Both series types are easy installation due to small size and being light weight. Available with a wide selection of configurations and can be purchased individually or in multi-valve manifolds.

BUILD OF MATERIALS

1. PNEUMATIC HOUSING = POLYPROPYLENE
2. SPRING = STAINLESS STEEL
3. PISTON = PVDF
4. DIAPHRAGM = VIRGIN PTFE
5. BODY = VIRGIN PTFE
6. BASEPLATE = ANODIZED ALUMINUM



Square Body



Part numbers for M or S series pneumatic style valves can be found on page 23

HOW TO ORDER

S series Pneumatic Valves

1/4-28 PORT/ .060 ORIFICE / 2WNC / ROUND
S112CPFR-V VITON
S112CPFR-K KALREZ

1/8 FNPT PORT/ .090 ORIFICE / 2WNC / ROUND
S212CPFR-V VITON
S212CPFR-K KALREZ

1/4-28 PORT/ .060 ORIFICE / 2WNO / ROUND
S112OPFR-V VITON
S112OPFR-K KALREZ

1/8 FNPT PORT/ .090 ORIFICE / 2WNO / ROUND
S212OPFR-V VITON
S212OPFR-K KALREZ

1/4-28 PORT/ .060 ORIFICE / 3W / ROUND
S113WPFR-V VITON
S113WPFR-K KALREZ

1/8 FNPT PORT/ .090 ORIFICE / 3W / ROUND
S213WPFR-V VITON
S213WPFR-K KALREZ

S series Pneumatic Valves

1/8 FNPT PORT/ .090 ORIFICE / 2WNC / SQUARE
S212CPFS-V VITON
S212CPFS-K KALREZ

1/8 FNPT PORT/ .090 ORIFICE / 2WNO / SQUARE
S212OPFS-V VITON
S212OPFS-K KALREZ

1/8 FNPT PORT/ .090 ORIFICE / 3W / SQUARE
S213WPFS-V VITON
S213WPFS-K KALREZ

1/8 TUBE PORT/ .090 ORIFICE / 2WNC / SQUARE
S212CPTS-V VITON
S212CPTS-K KALREZ

1/8 TUBE PORT/ .090 ORIFICE / 2WNO / SQUARE
S212OPTS-V VITON
S212OPTS-K KALREZ

1/8 TUBE PORT/ .090 ORIFICE / 3W / SQUARE
S213WPTS-V VITON
S213WPTS-K KALREZ

M series Pneumatic Valves

1/8 FNPT / 1/8 ORIFICE / 3W / ROUND
M223WPFR-T TEFLON
M223WPFR-V VITON
M223WPFR-K KALREZ

1/8 FNPT / 1/8 ORIFICE / 3W / SQUARE
M223WPFS-T TEFLON
M223WPFS-V VITON
M223WPFS-K KALREZ

1/8 TUBE / 1/8 ORIFICE / 3W / SQUARE
M223WPTS-T TEFLON
M223WPTS-V VITON
M223WPTS-K KALREZ

M series Pneumatic Valves

1/8 FNPT / 1/8 ORIFICE / 2WNC / ROUND
M222CPFR-T TEFLON
M222CPFR-V VITON
M222CPFR-K KALREZ

1/8 FNPT / 1/8 ORIFICE / 2WNC / SQUARE
M222CPFS-T TEFLON
M222CPFS-V VITON
M222CPFS-K KALREZ

1/8 TUBE / 1/8 ORIFICE / 2WNC / SQUARE
M222CPTS-T TEFLON
M222CPTS-V VITON
M222CPTS-K KALREZ

1/8 FNPT / 1/8 ORIFICE / 2WNO / ROUND
M222OPFR-T TEFLON
M222OPFR-V VITON
M222OPFR-K KALREZ

1/8 FNPT / 1/8 ORIFICE / 2WNO / SQUARE
M222OPFS-T TEFLON
M222OPFS-V VITON
M222OPFS-K KALREZ

1/8 TUBE / 1/8 ORIFICE / 2WNO / SQUARE
M222OPTS-T TEFLON
M222OPTS-V VITON
M222OPTS-K KALREZ

M series Pneumatic Valves

1/4 FNPT/ 1/8 ORIFICE/ 2WNC /ROUND
M422CPFR-T TEFLON
M422CPFR-V VITON
M422CPFR-K KALREZ

1/4 FNPT/ 1/8 ORIFICE/ 2WNC /SQUARE
M422CPFS-T TEFLON
M422CPFS-V VITON
M422CPFS-K KALREZ

1/4 TUBE / 1/8 ORIFICE/ 2WNC /SQUARE
M422CPTS-T TEFLON
M422CPTS-V VITON
M422CPTS-K KALREZ

1/4 FNPT / 1/8 ORIFICE/ 2WNO /ROUND
M422OPFR-T TEFLON
M422OPFR-V VITON
M422OPFR-K KALREZ

1/4 FNPT / 1/8 ORIFICE/ 2WNO /SQUARE
M422OPFS-T TEFLON
M422OPFS-V VITON
M422OPFS-K KALREZ

1/4 TUBE / 1/8 ORIFICE/ 2WNO /SQUARE
M422OPTS-T TEFLON
M422OPTS-V VITON
M422OPTS-K KALREZ

M series Pneumatic Valves

1/4 FNPT / 1/8 ORIFICE / 3W / ROUND
M423WPFR-T TEFLON
M423WPFR-V VITON
M423WPFR-K KALREZ

1/4 FNPT / 1/8 ORIFICE / 3W / SQUARE
M423WPFS-T TEFLON
M423WPFS-V VITON
M423WPFS-K KALREZ

1/4 TUBE / 1/8 ORIFICE / 3W / SQUARE
M423WPTS-T TEFLON
M423WPTS-V VITON
M423WPTS-K KALREZ

M series Pneumatic Valves

1/4 FNPT / 1/4 ORIFICE / 3W / ROUND
M443WPFR-T TEFLON
M443WPFR-V VITON
M443WPFR-K KALREZ

1/4 FNPT / 1/4 ORIFICE / 3W / SQUARE
M443WPFS-T TEFLON
M443WPFS-V VITON
M443WPFS-K KALREZ

1/4 TUBE / 1/4 ORIFICE / 3W / SQUARE
M443WPTS-T TEFLON
M443WPTS-V VITON
M443WPTS-K KALREZ

1/4 FLARED / 1/8 ORIFICE / 3W / SQUARE
M443WPFFS-V TEFLON
M443WPFFS-K KALREZ
M443WPFFS-T KALREZ

M series Pneumatic Valves

1/4 FNPT / 1/4 ORIFICE / 2WNC / ROUND
M442CPFR-V VITON
M442CPFR-K KALREZ
M442CPFR-T TEFLON

1/4 FNPT / 1/4 ORIFICE / 2WNC / SQUARE
M442CPFS-V VITON
M442CPFS-K KALREZ
M442CPFS-T TEFLON

1/4 TUBE / 1/4 ORIFICE / 2WNC / SQUARE
M442CPTS-V VITON
M442CPTS-K KALREZ
M442CPTS-T TEFLON

1/4 FLARED / 1/8 ORIFICE / 2WNC / SQUARE
M442CPFFS-V VITON
M442CPFFS-K KALREZ
M442CPFFS-T TEFLON

M series Pneumatic Valves

1/4 FNPT / 1/4 ORIFICE / 2WNO / ROUND
M442OPFR-V VITON
M442OPFR-K KALREZ
M442OPFR-T TEFLON

1/4 FNPT / 1/4 ORIFICE / 2WNO / SQUARE
M442OPFS-V VITON
M442OPFS-K KALREZ
M442OPFS-T TEFLON

1/4 TUBE / 1/4 ORIFICE / 2WNO / SQUARE
M442OPTS-V VITON
M442OPTS-K KALREZ
M442OPTS-T TEFLON

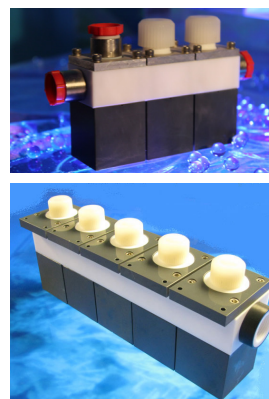
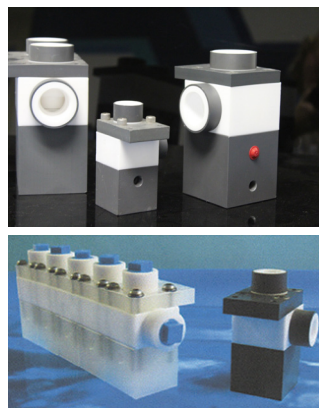
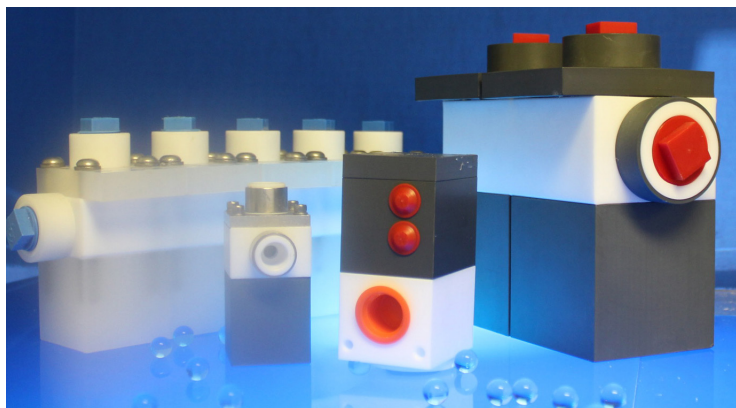
1/4 FLARED / 1/8 ORIFICE / 2WNO / SQUARE
M442OPFFS-V VITON
M442OPFFS-K KALREZ
M442OPFFS-T TEFLON

2W NC 2way Normal Closed
 2W NO 2way Normal Open
 3W 3way

Round Round Body
 Square Square Body

For 3/8 pneumatic part numbers see page 20 to build part numbers. when creating part number drop voltage number and add "P" in place. Drop wattage designator. Example : M662CPFS-T

A.C.R. VALVE and MULTI-VALVE MANIFOLD



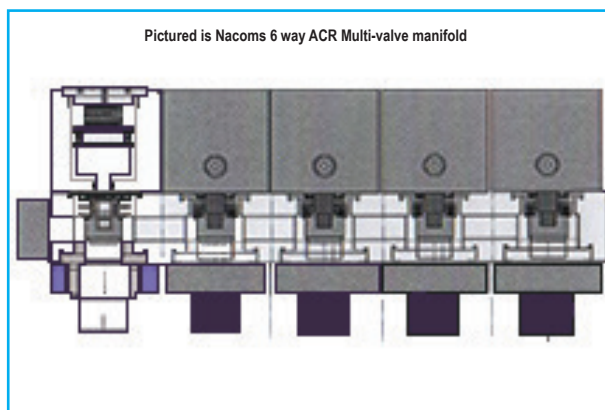
NACOM'S ACR SERIES PNEUMATIC VALVE and MULTI-VALVE MANIFOLDS offer total corrosion control through a complete fluoroplastic design and construction. The media side of valve is fabricated from virgin grade PTFE while the pneumatic side of the valve is fabricated from a choice of PVC, POLYPROPYLENE and PVDF. The result is a large flow valve capable of handling tough chemicals internally, while operating in severe environments externally.

The **ACR series** pneumatic valves are sold individually and in Multi-valve manifolds with port connection types that include FNPT, Compression Tube, and Fractional Flared. Sizes range from 1/4" and go up to 1-1/2" diameter. **NACOM** also offers the **ACR** in a *Semitool* style valve for direct replacement. .

Specifications

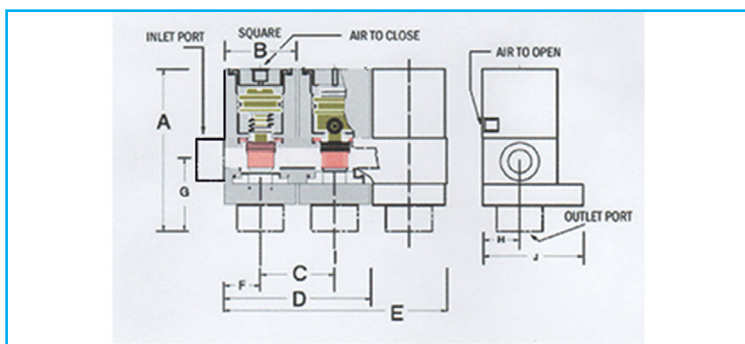
specification	1/2 inch	1.0 inch
Media Pressure	75 psi	40 psi
Operator Pressure	40 psi min	80 psi max
Pneumatic Operator	spring return	spring return
Media Temperature	60 degrees C	60 degrees C
Ambient Temperature	60 degrees C	60 degrees C
Wetted Surfaces	Virgin PTFE	Virgin PTFE
Pneumatic Surfaces	PVC/ POLYPRO	PVC/ POLYPRO
Pilot Port	1/8 FNPT	1/8 FNPT
Inlet Port	1/2 FNPT	1.0 FNPT

Sub Part of build.	Standard Valve	High Temp Valve
BODY	VIRGIN PTFE	VIRGIN PTFE
BELLOWS	VIRGIN PTFE	VIRGIN PTFE
PISTON	POLYPROPYLENE	PTFE COATED S.S COURSE THREAD
DUAL CONTAINMENT SEAL	N/A	VIRGIN PTFE
PNEUMATIC HSG	POLYPROPYLENE	PVDF
ORINGS	E.P OR VITON	KALREZ



Pictured is Nacoms 6 way ACR Multi-valve manifold

VALVE	A	B	C	D	E	F	G	H	J
1/2 ACR	3.62	1.75	3.75	3.50	5.25	.88	1.38	.88	2.44
1.0 ACR	5.75	2.75	2.75	5.50	8.25	1.38	2.25	1.38	3.50



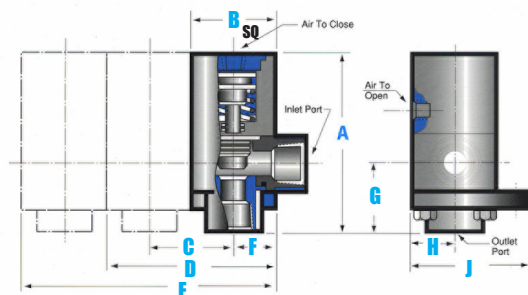
Options

PVC Pneumatic parts on valve can be ordered in Polypropylene and PVDF. This includes Piston, Housing, and Cap have matching material types.

NACOM'S ACR Series Pneumatic valves can be ordered in sizes ranging from 1/4" diameter up to 1-1/2" diameter in FNPT. 1/4" dia thru 1.0" dia in Tube and Flared port connections .

NACOM also manufactures *Semitool* style ACR Valves for direct replacement. Consult factory for more info

Specifications



VALVE	A	B	C	D	E	F	G	H	J		
1/2" ACR	3.62	1.75	3.75	3.50	5.25	.88	1.38	.88	2.44		
1" ACR	5.75	2.75	2.75	5.50	8.25	1.38	2.25	1.38	3.50		

dimensions for 1" are same in 3/4" version

How to Order

ACR XWXX-OCC

PORT 3 (4 WAY)

O = Open C = Closed

PORT 2 (3 WAY)

O = Open C = Closed

PORT 1 (2 WAY)

O = Open C = Closed

End Connection

T = Tube P = FNPT

FF = Fractional Flared

Orifice size

4 = 1/4 8 = 1/2 12 = 3/4 16 = 1.0 Inch**

24 = 1-1/2 Inch*

Configuration ***

2W = 2 WAY 3W = 3 WAY 4W = 4WAY

Note 1 * ACR Valves with 1-1/2" dia orifice are only available with FNPT port connection. 1-12" dia valves are only available in 2way open, 2way closed and 3way configurations. This model is not available in configurations of 4 way & up.

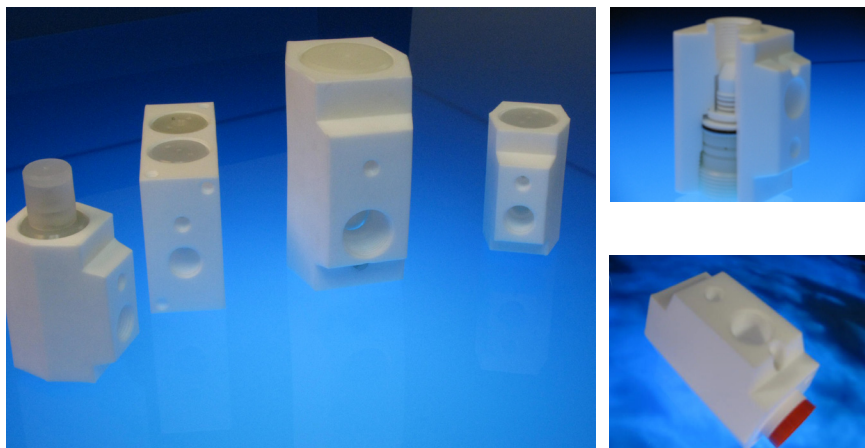
Note 2 ** ACR Valves with 1/4" & 1/2" dia orifices can be ordered in configurations ranging from 2 way to 15 way ACR Valves with 3/4" & 1.0 dia orifices are available up to 8 way configuration (see example on how to order)

Note 3 *** When valves are being ordered in configurations of 5 way and up the port designation changes from the typical designation (see 4 way designator style) to a revised designation. Example 4 way ACR-4W8P-CXX 5way ACR-5W8P-CX4 6 way ACR-6W8P-CX5

Note : All pneumatic portions of valve are PVC unless specified. For Polypropylene or PVDF add as follows (see below)

Example : ACR 2W8P-C-PP indicates Polypropylene pneumatic portion, ACR 2W8P-C-PVDF indicates PVDF pneumatic portion

ORIGINAL BANDIT VALVE



O.B.V. series Pneumatic valve

Original Bandit Valve

- EZ to Install or Service
- One piece Teflon Body
- Optimum Anti-Corrosion Design

NACOM'S O.B.V VALVE (Original Bandit Valve) an industry standard in the semiconductor wet process industry. For years these have been a favorite with OEM wet bench manufacturers. With its one piece Teflon Body, the OBV Valve justifies use as a DI Water valve, and with its optimum Anti-Corrosion design its perfect when being used as a Acid Drain valve. The OBV valve is easy to install , low in maintenance ,and is reliable. 2 way and 3 way configurations. Option features include " Restricted Closed" (REC), "Restricted Open"(REO), and " Micro Adjust" (MA).

Specifications

INCH	Media Pressure Port A	Media Pressure Port B	Actuation Pressure	Max Media Temp	Max Ambient Temp	Cv
1/2	75 PSI (5 BARS)	40 PSI (2.8 BARS)	40 PSI MIN 80 PSI MAX	302 deg F 160 deg C	140 deg F 60 deg C	2.8
3/4	30 PSI (2 BARS)	10 PSI (.7 BARS)	40 PSI MIN 80 PSI MAX	302 deg F 160 deg C	140 deg F 60 deg C	9.7
1.0	30 PSI (2 BARS)	10 PSI (.7 BARS)	40 PSI MIN 80 PSI MAX	302 deg F 160 deg C	140 deg F 60 deg C	13.5

Add on features.....

NACOM offers additional features to the Normal closed OBV valves. Listed below is the suffix for the feature added on to the valve and how to order it.

1. **REC - Restrict closed.** Allows valve to be restricted from closing all the way when pilot pressure is cut. This prevents DI water from stagnation allowing it to recirculate.
2. **REO - Restrict open** . Allows valve to be restricted from opening all the way.
3. **REB - Restrict both** . Allows valve to be restricted both open and closed
4. **MA - Micro adjust.** - A Flat head PVDF screw located under the inlet port of valve (port A - Front side of valve).
MAH Micro adjust hand turn knob - located on opposite side of inlet port (backside of valve)

Example of part number with add on feature :

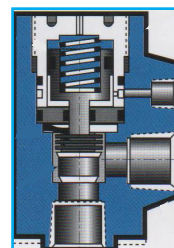
OBV-2W8P-C-REC Indicates 2way Normal Closed valve with "Restrict Closed" feature

Comparison between Standard model vs. High Temp model

Part Description	High Temp	Standard
BODY	VIRGIN PTFE	VIRGIN PTFE
BELLOWS	VIRGIN PTFE	VIRGIN PTFE
PISTON	TEFLON COATED SS*	PVDF
BACKING PLATE	VIRGIN PTFE	VIRGIN PTFE
BP SUPPORT	TEFLON COATED SS*	N/A
CAP	PVDF	POLYPROPYLENE
ORINGS	KALREZ 4079 / ULTRA	E.P
SPRING	TEFLON COATED SS*	TEFLON COATED SS*

Note : Bellows is re-designed with rib thickness increase, larger overall size. Piston has material change plus thread is changed to course thread. Backing plate support is added, And Orings are changed to Kalrez. ALL CHANGES APPLY TO HIGH TEMP VALVE

NACOM's OBV VALVE (ORIGINAL BANDIT VALVE) is available in the standard version and in the High Temp version. High Temp is considered special order and has added or re-designed components to allow the valve to operate at temperatures above the standard specs of the OBV Valve. Consult factory for price and delivery for this version.

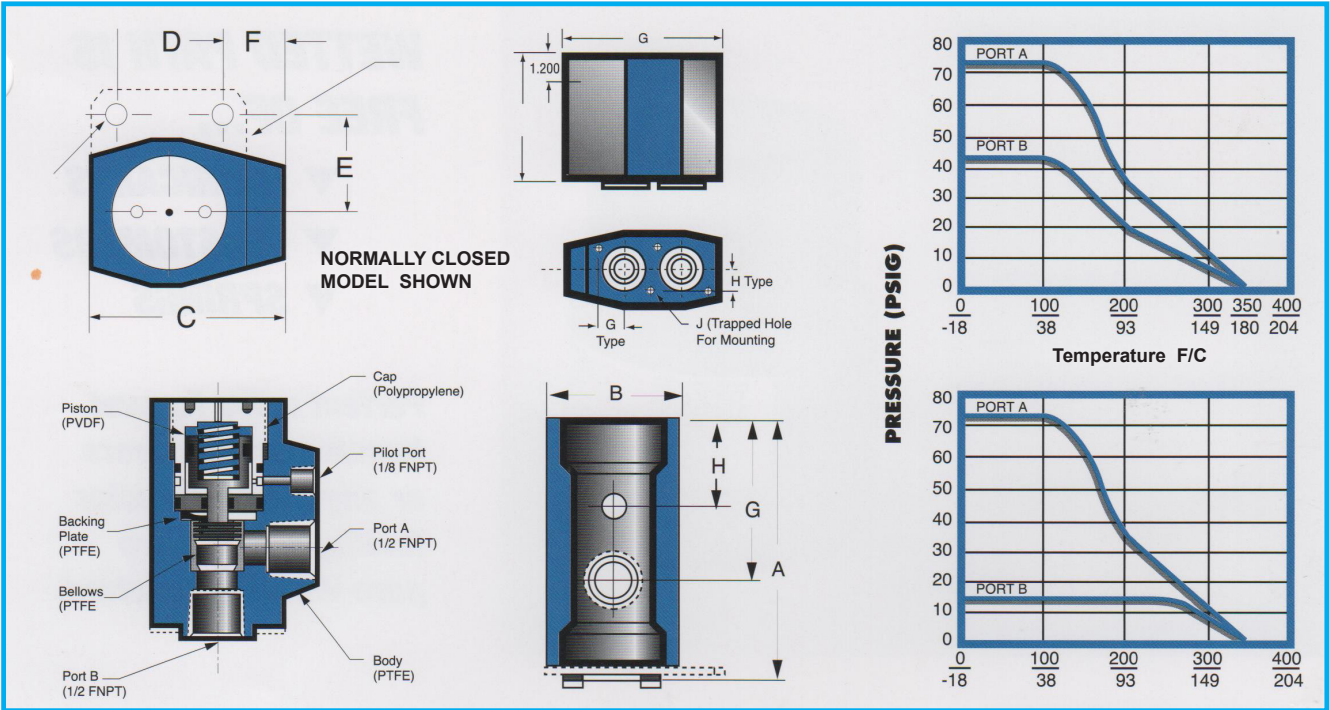
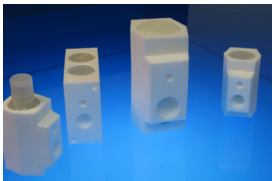


in

out

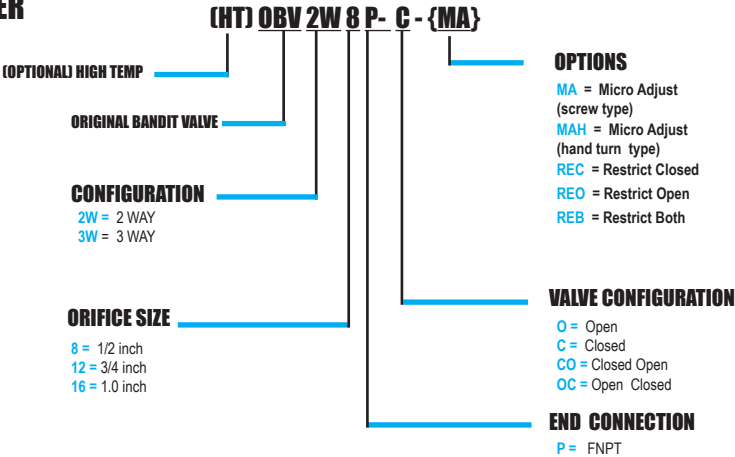
Original Bandit Valve

Specifications



INCH	A	B	C	D	E	F	G	H	I	
1/2 INCH	3.56	1.9	2.5	2.18	1.18	2.06	0.7	0.53	1/4-20	NOTE: Dimensions related to 3way models do not apply to high temp styles 2 way styles are based on a 2way normal closed model
1/2 INCH 3W	3.56	1.9	4.66	2.18	1.18	2.06	0.7	0.53	1/4-20	
3/4 INCH	5.61	2.91	3.76	3.64	1.94	3.64	1.21	0.85	1/4-20	
3/4 INCH 3W	5.61	3.0	6.25	N/A	N/A	N/A	1.21	0.85	1/4-20	
1.0 INCH	5.61	2.91	3.76	3.64	1.94	3.64	1.21	0.85	1/4-20	
1.0 INCH 3W	5.61	3.0	6.25	N/A	N/A	N/A	1.21	0.85	1/4-20	

HOW TO ORDER



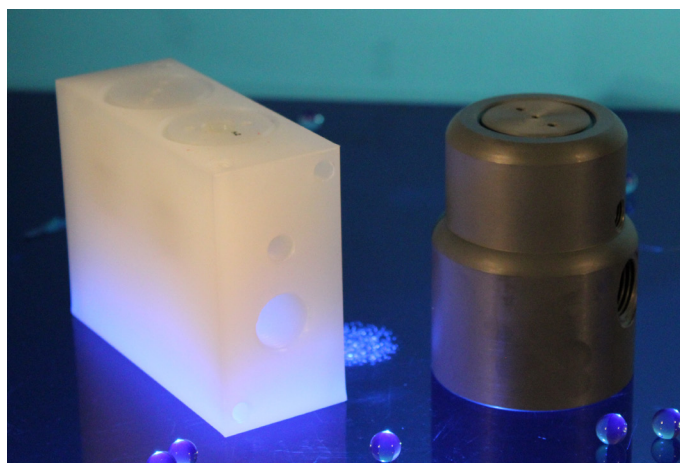
Ordering notes : When ordering the standard OBV valve there is no need to put "HT" before the letters "OBV". The letters "HT" only applies when the valve is a high temp model. see examples of how to order with and without high temp.

Example of non High Temp : **OBV-2W8P-C**

Example of High Temp : **HT-OBV-2W8P-C**

Example of non High Temp with add on feature : **OBV-2W8P-C-REC**

D.I WATER VALVE



NACOM'S DI WATER VALVE, Part of the Bandit series pneumatic valve family. Available in sizes ranging from 1/2" fnpt, up to 1.0" fnpt. 2 way and 3 way configurations with body materials available in PVC, POLYPROPYLENE, and PVDF.

Specifications

SPEC	PVC BODY	POLYPRO BODY	PVDF BODY
TYPE	2 WAY NC OR 2 WAY NO	2 WAY NC OR 2 WAY NO	2 WAY NC OR 2 WAY NO
ORIFICE	1/2"	1/2"	1/2"
CV FACTOR	2.8 G.P.M@ 1 PSI	2.8 G.P.M@ 1 PSI	2.8 G.P.M@ 1 PSI
FLUID PRESSURE MAX	75 PSI @ 70 deg C	75 PSI @ 70 deg C	75 PSI @ 70 deg C
BACK PRESSURE MAX	40 PSI @ 70 deg C	40 PSI @ 70 deg C	40 PSI @ 70 deg C
MEDIA TEMPERATURE MAX	140 degrees F 60 deg C	160 degrees F 80 deg C	212 degrees F 100 deg C
MEDIA PORTS	1/2" fnpt	1/2" fnpt	1/2" fnpt 1/2" socket weld
PILOT PRESSURE	40-60 psi	40-60 psi	40-60 psi
BODY	PVC	POLYPROPYLENE	PVDF
BELLOWS/POPPET	VIRGIN PTFE	VIRGIN PTFE	VIRGIN PTFE
PISTON	PVC	POLYPROPYLENE	PVDF
BACKING PLATE	VIRGIN PTFE	VIRGIN PTFE	VIRGIN PTFE
PNEUMATIC ORINGS	ETHYLENE PROPYLENE	ETHYLENE PROPYLENE	KALREZ
SPRING	STAINLESS STEEL	STAINLESS STEEL	TEFLON COATED SS

The DI Water valve is available in 2way open, 2way closed, and 3 way configurations.
Add on features : Listed below is add on features that can be added to the normal closed version only.
To order valve with the feature desired add designating call out to end of part number for that feature

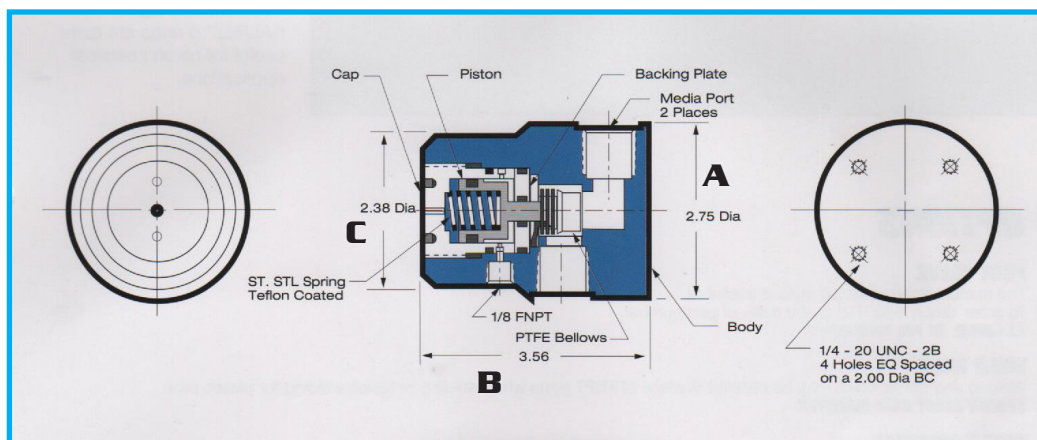
Example : DIB-PVC88P-C-REC indicates this valve has the restrict closed option

REC Restrict closed. Prevents valve from closing completely
REO Restrict open. Prevents valve from opening completely
REB Restrict both. Prevents valve from opening and closing completely
MA Micro adjust . Screw turn allows fluid to trickle thru and completely close when screw is turned

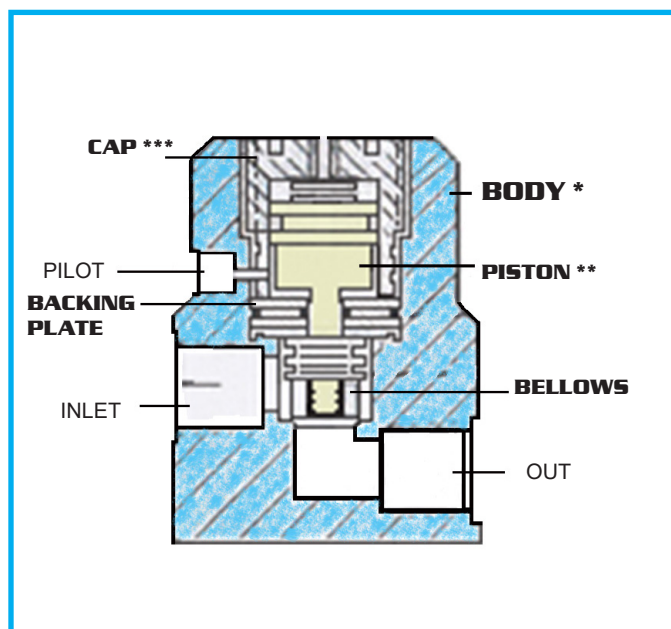
Wetted path is free of

- **LUBRICANTS**
- **ELASTOMERS**
- **SPRINGS**

The D.I Water valve is perfect for wet bench manufacturers or any semiconductor facility where ultra- pure water is required.



1/2 " NORMAL CLOSED SHOWN



Note : The material call out is for the body material the valve is fabricated from . All DI Water valves use the PTFE Bellows internal design.
(see below for material types)

ORIFICE	A	B	C
1/2"	2.75	3.56	2.38
3/4"	4.00	6.12	3.25
1.0"	4.00	6.12	3.25

HOW TO ORDER

DI X XX X X P XX (XXX)

DI WATER VALVE

TYPE
2 WAY = B
3 WAY = 3

MATERIAL
PVC
POLYPROPYLENE
PVDF

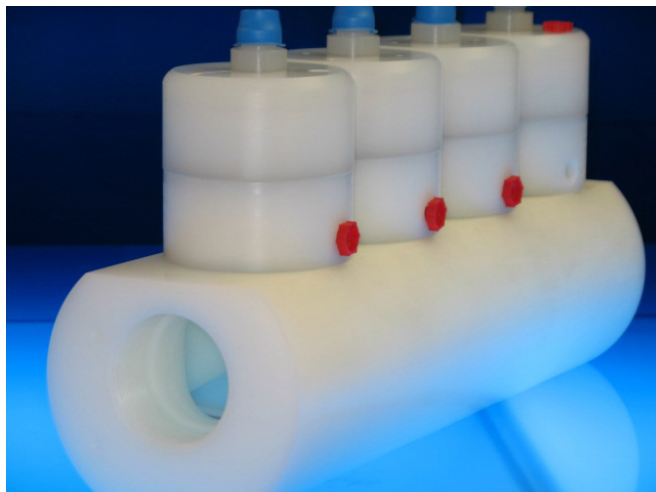
ORIFICE SIZE
8 = 1/2"
12 = 3/4"
16 = 1.0"

OPTIONS
REC = RESTRICT CLOSED
REO = RESTRICT OPEN
REB = RESTRICT BOTH
MA = MICRO ADJUST

VALVE POSITION
C = NORMAL CLOSED
O = NORMAL OPEN
OC = OPEN / CLOSE
CO = CLOSED/OPEN

PORT SIZE
8 = 1/2"
12 = 3/4"
16 = 1.0"

LARGE ORIFICE DRAIN VALVE



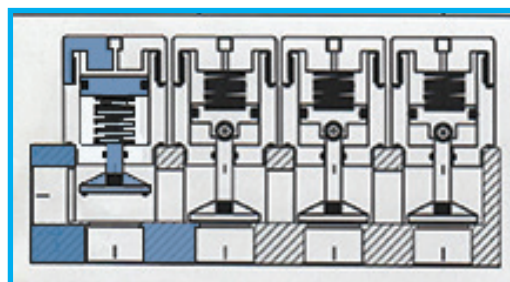
PVC

POLYPROPYLENE

PVDF

NACOM'S DV series large orifice Drain Valves are versatile and may be ordered in air to open / air to close or spring return models. Additionally, the user may select from 2 way, 3 way or 4 way configurations, where each port may be independently activated for maximum utilization.

For aggressive chemical applications, the DV series drain valve may be ordered with PVDF Body construction and Kalrez o-rings. Since pricing varies due to fluctuating material costs please consult factory for ordering information.



orifice size	inlet / outlet	body material	oring material					
					2 way	3 way	4 way	

Air to Open and Air to Close

1"	1" FNPT	PVC	Ethlenepropylene		NA-DVPVC1600-EP	NA-DVPVC1601-EP	NA-DVPVC1602-EP	
1"	1" FNPT	POLYPROPYLENE	Ethlenepropylene		NA-DVPOL1600-EP	NA-DVPOL1601-EP	NA-DVPOL1602-EP	
1"	1" FNPT	PVDF	Kalrez		NA-DVPVDF1600-KA	NA-DVPVDF1601-KA	NA-DVPVDF1602-KA	
1-1/2"	1-1/2" FNPT	PVC	Ethlenepropylene		NA-DVPVC1700-EP	NA-DVPVC1701-EP	NA-DVPVC1702-EP	
1-1/2"	1-1/2" FNPT	POLYPROPYLENE	Ethlenepropylene		NA-DVPOL1700-EP	NA-DVPOL1701-EP	NA-DVPOL1702-EP	
1-1/2"	1-1/2" FNPT	PVDF	Kalrez		NA-DVPVDF1700-KA	NA-DVPVDF1701-KA	NA-DVPVDF1702-KA	
2"	2" FNPT	PVC	Ethlenepropylene		NA-DVPVC2000-EP	NA-DVPVC2001-EP	NA-DVPVC2002-EP	
2"	2" FNPT	POLYPROPYLENE	Ethlenepropylene		NA-DVPOL2000-EP	NA-DVPOL2001-EP	NA-DVPOL2002-EP	
2"	2" FNPT	PVDF	Kalrez		NA-DVPVDF2000-KA	NA-DVPVDF2001-KA	NA-DVPVDF2002-KA	

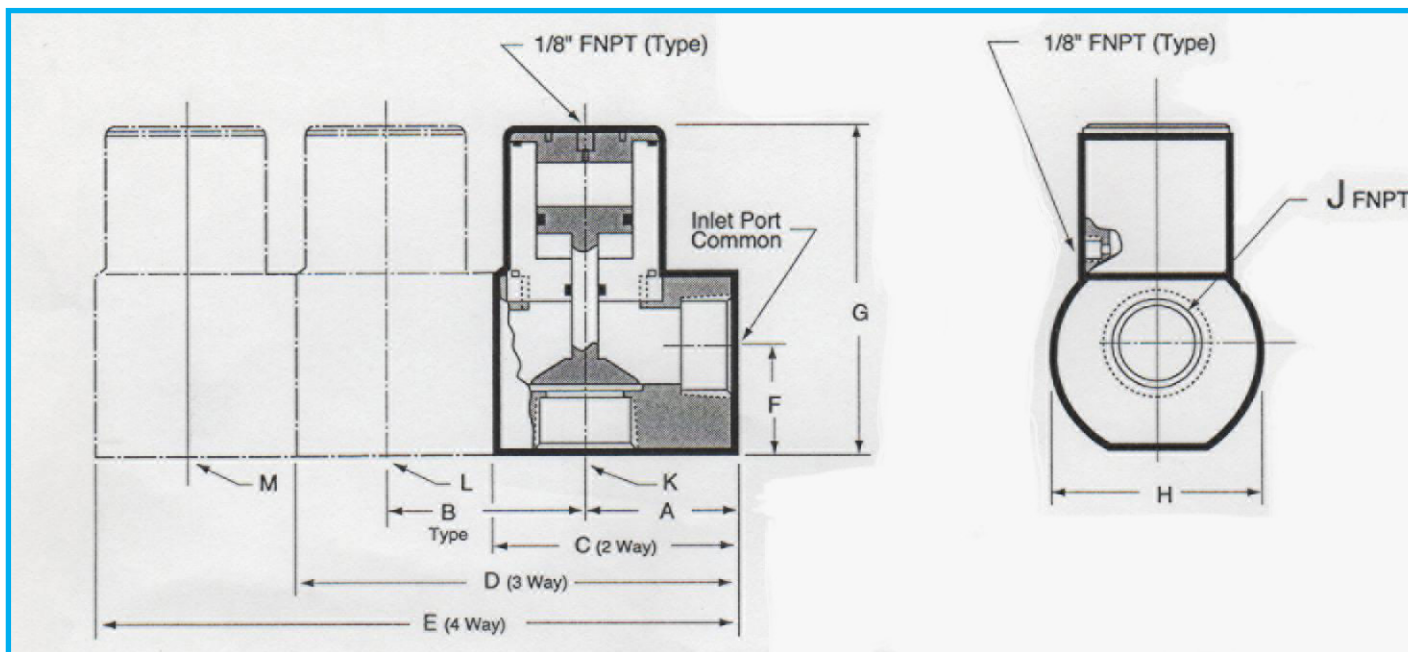
Air to Open and Spring to Close

orifice size	inlet / outlet	body material	oring material		2 way	3 way	4 way	
1"	1" FNPT	PVC	Ethlenepropylene		NA-DVPVC1800C-EP	NA-DVPVC1801OC-EP	NA-DVPVC1802OCC-EP	
1"	1" FNPT	POLYPROPYLENE	Ethlenepropylene		NA-DVPOL1800C-EP	NA-DVPOL1801OC-EP	NA-DVPOL1802OCC-EP	
1"	1" FNPT	PVDF	Kalrez		NA-DVPVDF1800C-KA	NA-DVPVDF1801OC-KA	NA-DVPVDF1802OCC-KA	
1-1/2"	1-1/2" FNPT	PVC	Ethlenepropylene		NA-DVPVC1900C-EP	NA-DVPVC1901OC-EP	NA-DVPVC1902OCC-EP	
1-1/2"	1-1/2" FNPT	POLYPROPYLENE	Ethlenepropylene		NA-DVPOL1900C-EP	NA-DVPOL1901OC-EP	NA-DVPOL1902OCC-EP	
1-1/2"	1-1/2" FNPT	PVDF	Kalrez		NA-DVPVDF1900C-KA	NA-DVPVDF1901OC-KA	NA-DVPVDF1902OCC-KA	
2"	2" FNPT	PVC	Ethlenepropylene		NA-DVPVC2100C-EP	NA-DVPVC2101OC-EP	NA-DVPVC2102OCC-EP	
2"	2" FNPT	POLYPROPYLENE	Ethlenepropylene		NA-DVPOL2100C-EP	NA-DVPOL2101OC-EP	NA-DVPOL2102OCC-EP	
2"	2" FNPT	PVDF	Kalrez		NA-DVPVDF2100C-KA	NA-DVPVDF2101OC-KA	NA-DVPVDF2102OCC-KA	

Media Pressure	Media Temperature	Operating Pressure	Oring Material	Cv factor
20 psi	PVC 140 degrees F / 60 degrees C Polypropylene 160 degrees F / 80 degrees C	45-60 PSI	Ethlenepropylene (std)	1" orifice 12 1-1/2" orifice 30 2" orifice 43

D.V. SERIES DRAIN VALVE

Media Pressure	Media Temperature	Operating Pressure	Oring Material	CV Factor
20 psi	PVC 140 degrees F / 60 degrees C POLY 160 degrees F / 80 degrees C	45 -60 psi	EP = Ethylenepropylene VT = Viton KA = Kalrez	1 inch orifice 12 1-1/2 inch orifice 30 2 inch orifice 43



ORIFICE SIZE	A	B	C	D	E	F	G	H	J	K	L	M
1.0 inch	2.16	2.56	3.50	6.07	8.63	1.79	5.50	4.00 dia	1.0 fnpt	1.0 fnpt	1.0 fnpt	1.0 fnpt
1-1/2 inch	2.81	3.00	4.38	7.38	10.38	1.97	6.06	4.00 dia	1.5 fnpt	1.5 fnpt	1.5 fnpt	1.5 fnpt
2.0 inch	3.00	3.50	4.81	8.31	11.81	2.28	6.88	5.00 dia	2.0 fnpt	2.0 fnpt	2.0 fnpt	2.0 fnpt

Material types

NACOM's DV series large orifice Drain valves are available in 3 material types.

PVC

POLYPROPYLENE

PVDF

All NACOM DV series drain valves are equipped with E.P orings. Kalrez is a option at a additional cost

Oring types

As a standard NACOM's DV series Large orifice drain valves are equipped with E.P (ethelenepropylene) Orings. Other options include Viton and Kalrez. Note : Kalrez is a additional cost and may increase time of delivery depending on availability.

TEFLON, VITON and KALREZ are REGISTERED TRADEMARKS OF E.I DUPONT DE NEMOURS CO



**Pvc
Polypropylene
PVDF**

**Pneumatic and
Foot Operated style**

NACOM

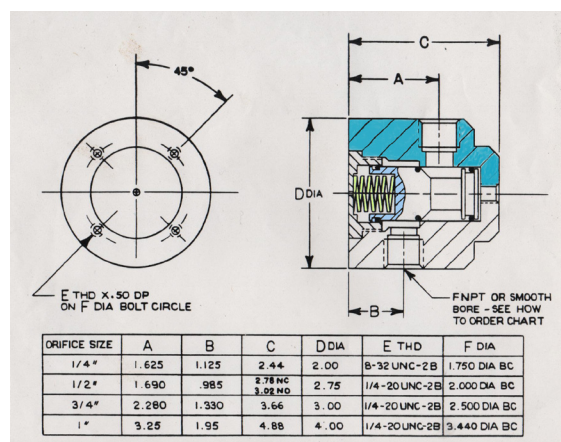
NACOM'S H2O VALVES- Available in Pneumatic or Foot operated styles.

All H2O valves are manufactured from corrosion resistant materials such as PVC, POLYPROPYLENE and PVDF. Further each models design is of spring return where the spring is isolated from the flowstream to prevent media contamination from metallic contact.

Sizes range from 1/4" fnpt and go up to 1.0" fnpt. Configurations include 2way open or 2way closed in the pneumatic actuated style and 2way closed for the foot style actuated.

Specifications

Specification	1/4"	1/2"	3/4"	1.0"
Media Pressure	80 PSI	80 PSI	60 PSI	60 PSI
Media Temperature				
PVC	140 deg F / 60 deg C			
POLYPROPYLENE	160 deg F / 70 deg C			
PVDF	212 deg F / 100 deg C			
Operating Pressure	35-75 PSI	35-75 PSI	35-75 PSI	35-75 PSI



FOOT VALVE CONFIGURATION may be ordered by adding "FV" to suffix of part number. Example: **NA-PV88NC-EP-FV**

LOW PROFILE BODY Nacom's 1/2" model valve is available with a low profile body. This is perfect when your working with limited space. Simply add "L" to the part number
Example : **NA-L-POL88NC-EP**

3 WAY VERSION In addition to the standard size 2 way H2O Valve, we are pleased to offer the 1/2" model in a 3 way configuration. This is considered special and can be ported to the configuration you want. Consult factory

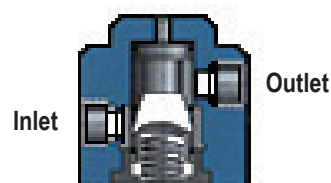
Part Number	Orifice size	Port Size	Configuration	Material	Oring Material
NA-PVC-44NC-EP	1/4"	1/4" FNPT	2 WAY NC	PVC	Ethylene Propylene
NA-POL-44NC-EP	1/4"	1/4" FNPT	2WAY NC	POLYPROPYLENE	
NA-PVDF-44NC-EP	1/4"	1/4" FNPT	2WAY NC	PVDF	
NA-PV88NC-EP	1/2"	1/2" FNPT	2WAY NC	PVC	Ethylene Propylene
NA-POL88NC-EP	1/2"	1/2" FNPT	2WAY NC	POLYPROPYLENE	
NA-PVDF88NC-EP	1/2"	1/2" FNPT	2WAY NC	PVDF	
NA-PV1212NC-EP	3/4"	3/4" FNPT	2 WAY NC	PVC	Ethylene Propylene
NA-POL1212NC-EP	3/4"	3/4" FNPT	2WAY NC	POLYPROPYLENE	
NA-PVDF1212NC-EP	3/4"	3/4" FNPT	2WAY NC	PVDF	

NZU VALVE **PVC, POLYPROPYLENE, PVDF**

Specifications and Part numbers continued.....

View of 1/2" NC Model

1/8" fnpt



Part Number	Orifice Size	Port Size	Valve Configuration	Body Material	O-ring Material
NA-PVC1616NC-EP NA-POL1616NC-EP NA-PVDF1616NC-EP	1.0 Inch 1.0 Inch 1.0 Inch	1.0 Inch FNPT 1.0 Inch FNPT 1.0 Inch FNPT	2 Way Normal Closed 2 Way Normal Closed 2 Way Normal Closed	PVC POLYPROPYLENE PVDF	Ethlenepropylene Ethlenepropylene Ethlenepropylene
NORMAL OPEN STYLE					
NA-PVC44NO-EP NA-POL44NO-EP NA-PVDF44NO-EP	1/4 Inch 1/4 Inch 1/4 Inch	1/4 Inch FNPT 1/4 Inch FNPT 1/4 Inch FNPT	2 Way Normal Open 2 Way Normal Open 2 Way Normal Open	PVC POLYPROPYLENE PVDF	Ethlenepropylene Ethlenepropylene Ethlenepropylene
NA-PVC88NO-EP NA-POL88NO-EP NA-PVDF88NO-EP	1/2 Inch 1/2 Inch 1/2 Inch	1/2 Inch FNPT 1/2 Inch FNPT 1/2 Inch FNPT	2 Way Normal Open 2 Way Normal Open 2 Way Normal Open	PVC POLYPROPYLENE PVDF	Ethlenepropylene Ethlenepropylene Ethlenepropylene
NA-PVC1212NO-EP NA-POL1212NO-EP NA-PVDF1212NO-EP	3/4 Inch 3/4 Inch 3/4 Inch	3/4 Inch FNPT 3/4 Inch FNPT 3/4 Inch FNPT	2 Way Normal Open 2 Way Normal Open 2 Way Normal Open	PVC POLYPROPYLENE PVDF	Ethlenepropylene Ethlenepropylene Ethlenepropylene
NA-PVC1616NO-EP NA-POL1616NO-EP NA-PVDF1616NO-EP	1.0 Inch 1.0 Inch 1.0 Inch	1.0 Inch FNPT 1.0 Inch FNPT 1.0 Inch FNPT	2 Way Normal Open 2 Way Normal Open 2 Way Normal Open	PVC POLYPROPYLENE PVDF	Ethlenepropylene Ethlenepropylene Ethlenepropylene

FOOT VALVE VERSION

FOOTVALVE VERSION IS A MANUALLY ACTUATED STYLE REPLACING THE AIR ACTUATION.
THESE ARE ONLY AVAILABLE IN 1/4" & 1/2" SIZES NORMAL CLOSED CONFIGURATION

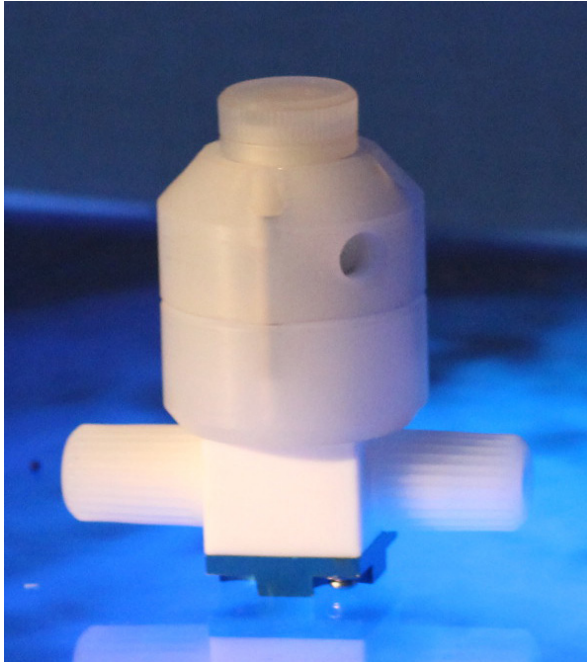
NA-PVC44NC-EP-FV NA-POL44NC-EP-FV NA-PVDF44NC-EP-FV	1/4" 1/4" 1/4"	1/4" FNPT 1/4" FNPT 1/4" FNPT	2 Way Normal Closed Foot valve 2 Way Normal Closed Foot valve 2 Way Normal Closed Foot valve	PVC POLYPROPYLENE PVDF	Ethlenepropylene Ethlenepropylene Ethlenepropylene
NA-PVC88NC-EP-FV NA-POL88NC-EP-FV NA-PVDF88NC-EP-FV	1/2" 1/2" 1/2"	1/2" FNPT 1/2" FNPT 1/2" FNPT	2 Way Normal Closed Foot valve 2 Way Normal Closed Foot valve 2 Way Normal Closed Foot valve	PVC POLYPROPYLENE PVDF	Ethlenepropylene Ethlenepropylene Ethlenepropylene

LOW PROFILE VERSION

NA-L-PVC88NC-EP NA-L-POL88NC-EP NA-L-PVDF88NC-EP	1/2" 1/2" 1/2"	1/2" FNPT 1/2" FNPT 1/2" FNPT	2 Way Normal Closed Low Profile 2 Way Normal Closed Low Profile 2 Way Normal Closed Low Profile	PVC POLYPROPYLENE PVDF	Ethlenepropylene Ethlenepropylene Ethlenepropylene
--	----------------------	-------------------------------------	---	---	--

note : Valves are equipped with "EP" (Ethlenepropylene) orings. Viton is a alternative and does not increase price.
To choose with Viton simply remove EP and put VT to end of part number. Example **NA-POL88NC-VT**
Kalrez is another option available. Consult factory for additional charge for Kalrez

TEFLON SUCKBACK VALVE



- **ADJUSTABLE SUCKBACK CAPACITY**
- **EASY IN-LINE INSTALLATION**
- **ELIMINATES DRIPPING OF LIQUIDS FROM DISPENSE NOZZLES**
- **ALL PTFE WETTED PARTS**
- **COMPLETE SHUT OFF**

NACOM'S PTFE SUCKBACK VALVE is the perfect solution for dispensing equipment to prevent dripping of solutions from dispense nozzles, photoresist, adhesives, acids, solvents, syrups and many other medias that may be passed through this valve.

This combination valve performs two simultaneous functions. Being a normal closed valve, it requires air to actuate. When switching from the normal open back to the closed position, its inique design creates a vacuum on the discharge port and immediately sucksback a predetermined amount of liquid. The adjustment knob on top of the valve gives excellent repeatability on the suckback volume.

The **SBV series PTFE SUCKBACK VALVE** is available with orifice sizes of 1/8 and 1/4 inch diameter. Port connection sizes range from 1/8 dia up to 3/8 inch diameter. Available with FNPT, COMPRESSION TUBE, and Fractional Flared end connections.

How to Order

SBV - X - X - X

PORT SIZE

2 = 1/8 INCH
3 = 3/16 INCH
4 = 1/4 INCH
6 = 3/8 INCH

ORIFICE SIZE

2 = 1/8 INCH
3 = 3/16 INCH
4 = 1/4 INCH

END CONNECTION

F = FNPT
T = FRACTIONAL TUBE OD
M = METRIC TUBE OD
MPT = MALE NPT
FF = FRACTIONAL FLARED

MODEL DESIGNATOR

SBV = SUCKBACK VALVE

Specifications

MEDIA PRESSURE	3 to 30 PSI
ACTUATOR PRESSURE	40 PSI TO 60 PSI
MEDIA TEMPERATURE	15 Degrees C to 70 Degrees C
Cv RATING	1/4 INCH ORIFICE .070
SUCKBACK CAPACITY	6 TO 100"

