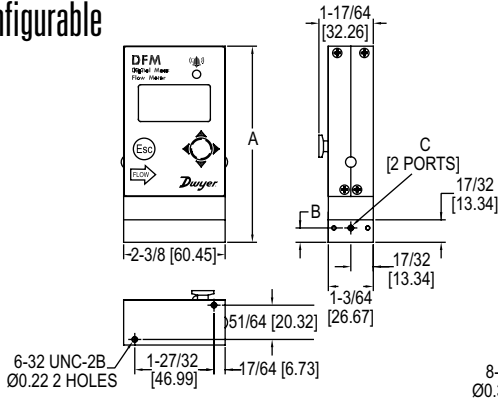
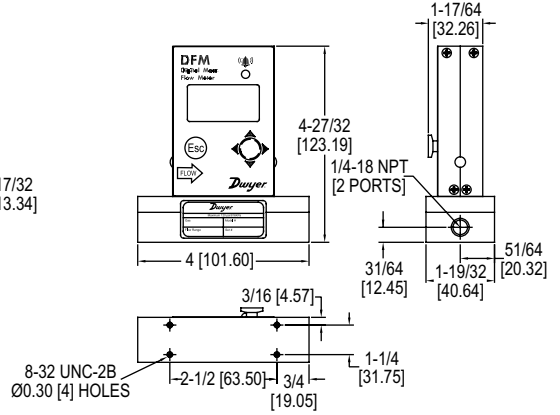


DIGITAL FLOW METER

Multi-Parameter, Multi-Gas, Field Configurable



Ranges 0.5 mL/min-20 L/min (DFM-01/50)



Ranges 21 L/min-100 L/min (DFM-51/56)

Range	A	B	C
0.5 mL/min-50 mL/min	4-13/32 [111.76]	4-37/64 [116.33]	10-32 UNF-2B
51 mL/min-20 L/min	4-37/64 [116.33]	4-13/32 [111.76]	1/8-27 NPT

The **Series DFM Digital Flow Meter** is the industry leader in the measurement of mass and volumetric flow rates of process gases. Using the OLED/joystick interface, the flowmeter can measure up to 30 different gases. Simultaneous displays of mass flow, volumetric flow, pressure and temperature parameters promote applications in a variety of industries.

FEATURES/BENEFITS

- Quick (< 20ms) response time
- Multi-parameter functionality
- Multi-gas functionality
- Capable of storing up to 90 gases and 20 custom gas mixes
- Field configurable
- Modifiable outputs
- High, low or in-range alarms with preset action delay for mass flow, temperature and pressure

APPLICATIONS

- Gas flow measurement
- Operating pumps and valves
- Process equipment
- Scientific and analytical
- Bioreactors and surface depositions
- Gas sampling
- General manufacturing

SPECIFICATIONS

Service: Clean, non-corrosive gases compatible with wetted parts.
Wetted Materials: 316 SS, 416 SS, high temperature polyamide, alumina ceramic, epoxy, silicone, glass, gold, FKM O-rings.
Accuracy: ±(0.5% of reading + 0.2% FS).
Repeatability: ±0.15% FS.
Response Time: 10 ms.
Output: 0-5 VDC, 0-10 VDC and 4-20 mA.
Relay Rating: Programmable solid state relay.
Max. Particulate Size: 20 microns.
Temperature Limits: 14 to 140°F (-10 to 60°C).
Power Supply: 9-26 VDC.
Process Connections: 1/8" compression fitting for flow rates ≤ 10 L/min; 1/4" for ≤ 50 L/min; 3/8" for ≤ 100 L/min.
Display: 2 x 16 character OLED (model selectable).
Pressure Limits: 120 psig (8.27 bar).
Leak Integrity: 1 x 10⁻⁹ sccs of helium.
Weight: DFM-01/50: 0.85 lbs (0.4 kg); DFM-51/56: 1.15 lbs (0.52 kg).
Agency Approvals: CE.

Il **fondoscala** è impostabile da zero fino ai valori nei seguenti campi e si hanno le relative cadute di pressione

MODEL CHART									
Example	DFM	-22	010	-V	-A	L	A	2	DFM-22010-V-ALA2
Series	DFM								Digital flow controller
Range*									
Body Size			005 010 050 100						Very low flow Low flow Medium flow High flow
Seal Material				V					Fluoroelastomer
Fittings					A B D				1/4" compression (low) 1/8" compression (medium) 3/8" compression (high)
Display						L			LED display
Output Signal							A		0-5 VDC default (4-20 mA, 0-10 VDC display selectable)
Digital Interface								2 3	RS-232 default (RS-485 display selectable) RS-232 with Modbus® (RS-485 selectable)

STANDARD PRESSURE DROP [AIR]	
0.5 to 50 mL/min	1.0
51 mL/min to 20 sL/min	1.0
21 sL/min to 50 sL/min	2.0
51 sL/min to 100 sL/min	2.5
101 sL/min to 250 sL/min	5.5
251 sL/min 500 sL/min	5.5
501 sL/min to 1000 sL/min	7.0
DPM (BREEZE™) LOW PRESSURE DROP [AIR]	
0.5 mL/min to 20 mL/min	0.06
21 mL/min to 2 sL/min	0.07
2.1 sL/min to 10 sL/min	0.085
10.1 sL/min to 20 sL/min	0.3
20.1 sL/min to 40 sL/min	0.15
40.1 sL/min to 100 sL/min	0.25

ACCESSORIES

Model	Description
GFM-110P	110 V power supply
GFM-220PE	220 V power supply
GFM-CBL4	8 ft (2.4 m) cable with 15-pin connector
GFM-CBL5	3 ft (0.9 m) extension cable for LCD readout