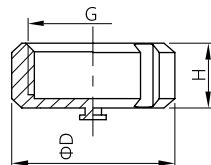
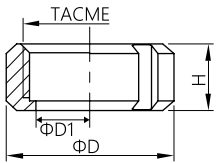


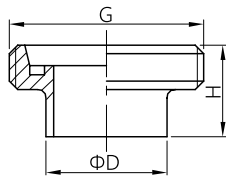
# 由任.FORGED UNION

## DIN 11851 Unions

### DIN-13R



DIN-13RBN

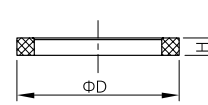


### DIN-15DA/DB LONG WELDING MALE Part no: DINU03

Size	D		t	G	H
	1	2			
DN10	12	13	1.5	Rd28×1/8	21
DN15	18	19	1.5	Rd34×1/8	21
DN20	22	23	1.5	Rd44×1/6	24
DN25	28	29	1.5	Rd52×1/6	29
DN32	34	35	1.5	Rd58×1/6	32
DN40	40	41	1.5	Rd65×1/6	33
DN50	52	53	1.5	Rd78×1/6	35
DN65	-	70	2	Rd95×1/6	40
DN80	-	85	2	Rd110×1/4	45
DN100	-	104	2	Rd130×1/4	54
DN125	-	129	2	Rd160×1/4	46
DN150	-	154	2	Rd190×1/4	50

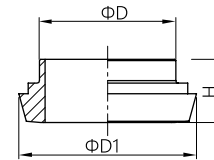
### DIN Round Nut/Blind Nut Part no: DINU01

Size	DN	D	G	H
DN10	19	38	Rd28×1/8	18
DN15	25	44	Rd34×1/8	18
DN20	31	54	Rd44×1/6	20
DN25	36	62	Rd52×1/6	21
DN32	42	70	Rd58×1/6	21
DN40	49	77	Rd65×1/6	21
DN50	62	91	Rd78×1/6	22
DN65	80	112	Rd95×1/6	25
DN80	94	125	Rd110×1/4	27
DN100	115	147	Rd130×1/4	29
DN125	138	178	Rd160×1/4	32
DN150	164	208	Rd119×1/4	34



### DIN SEAL RING Part no: DINU02

Size	D1	H
DN10	20	4
DN15	26	5
DN20	33	5
DN25	40	5
DN32	46	5
DN40	52	5
DN50	64	5
DN65	81	5
DN80	95	5
DN100	114	5
DN125	142	6
DN150	167	6

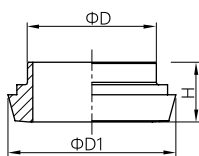


### DIN-14DA/DB LONG WELDING LINER Part no: DINU04

Size	D		t	D1	H
	1	2			
DN10	12	13	1.5	22	17
DN15	18	19	1.5	28	17
DN20	22	23	1.5	36	18
DN25	28	29	1.5	44	22
DN32	34	35	1.5	50	25
DN40	40	41	1.5	56	26
DN50	52	53	1.5	68	28
DN65	-	70	2	86	32
DN80	-	85	2	100	37
DN100	-	104	2	121	44
DN125	-	129	2	150	34
DN150	-	154	2	176	37

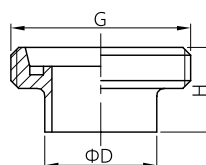


# 由任.FORGED UNION



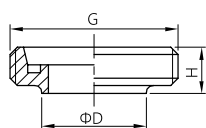
**DIN-14 HIGH PRESSURE WELDING LINER**  
Part no: DINU05

Size	D	D1	H	T
DN10	15	22	17	2.5
DN15	21	28	17	2.5
DN20	25	36	18	2.5
DN25	31	44	22	2.5
DN32	37	50	25	2.5
DN40	43	56	26	2.5
DN50	55	68	28	2.5
DN65	72	86	32	3
DN80	87	100	37	3
DN100	106	121	44	3
DN125	132	150	34	3.5
DN150	157	176	37	3.5



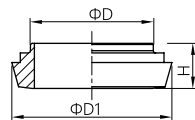
**DIN-15 HIGH PRESSURE WELDING MALE**  
Part no: DINU06

Size	D	G	H	T
DN10	15	Rd28×1/8	21	2.5
DN15	21	Rd34×1/8	21	2.5
DN20	25	Rd44×1/6	24	2.5
DN25	31	Rd52×1/6	29	2.5
DN32	37	Rd58×1/6	32	2.5
DN40	43	Rd65×1/6	33	2.5
DN50	55	Rd78×1/6	35	2.5
DN65	72	Rd95×1/6	40	3
DN80	87	Rd110×1/4	45	3
DN100	106	Rd130×1/4	54	3
DN125	132	Rd160×1/4	46	3.5
DN150	157	Rd190×1/4	50	3.5



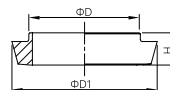
**DIN-15E SHORT WELDING MALE**  
Part no: DINU07

Size	D	G	H
DN15	18/19	Rd34×1/8	17
DN20	22/23	Rd44×1/6	19
DN25	28/29	Rd52×1/6	22
DN32	34/35	Rd58×1/6	23
DN40	40/41	Rd65×1/6	21
DN50	52/53	Rd78×1/6	22
DN65	70	Rd95×1/6	25
DN80	85	Rd110×1/4	25
DN100	104	Rd130×1/4	30
DN125	129	Rd160×1/4	33
DN150	154	Rd190×1/4	35



**SHORT STEPPED WELDING LINER**  
Part no: DINU08

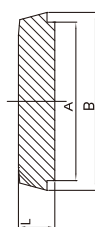
Size	D	D1	H
DN15	18/19	28	13
DN20	22/23	36	15
DN25	28/29	44	17
DN32	34/35	50	17
DN40	40/41	56	19
DN50	52/53	68	20
DN65	70	86	20
DN80	85	100	23
DN100	104	121	26
DN125	129	150	33
DN150	154	176	34



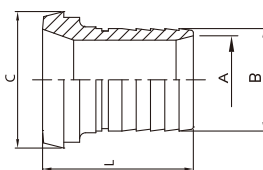
**DIN-14E SHORT WELDING LINER**  
Part no: DINU09

Size	D	D1	H
DN10	12/13	22	13
DN15	18/19	28	13
DN20	22/23	36	13
DN25	28/29	44	15.5
DN32	34/35	50	16
DN40	40/41	56	16
DN50	52/53	68	17
DN65	70	86	18
DN80	85	100	17
DN100	104	121	21
DN125	129	150	25
DN150	154	176	30

**DIN-14B Blank**  
Part no: DINU10



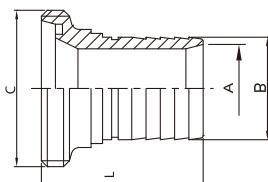
SIZE	A	B	L
10	18	22.5	9
15	24	28.5	9
20	30	36.5	11
25	35	44	13
32	41	50	13
40	48	56	13
50	61	68.5	14
65	79	86	
80	93	100	16
100	114	121	20
125	137	150	22
150	163	176	24



**DIN-14AHR HOSE ADAPTER**  
Part no: DINU11

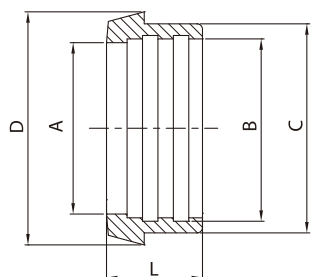
SIZE	A	B	C	L
25	22.2	25	44	67
32	28.7	32.2	50	71
40	34	38	56	78
50	47	50.5	68	89
65	59	63.2	86	100
80	71.5	75.5	100	108
100	95	100.8	121	120

**DIN-15AHR HOSE ADAPTER**  
Part no: DINU12



SIZE	A	B	C	L
25	22.2	25	RD 52*1/6	69
32	28.7	32.2	RD 58*1/6	73
40	34	38	RD 65*1/6	80
50	47	50.5	RD 78*1/6	90
65	59	63.2	RD 95*1/6	108
80	71.5	75.5	RD 110*1/4	116
100	95	100.8	RD 130*1/4	128

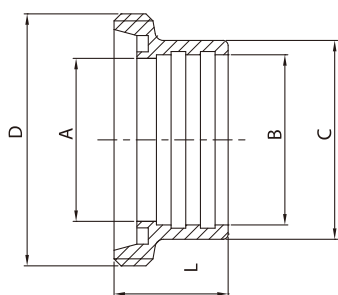
# 由任.FORGED UNION



Part no:DINU13

## DIN-14R EXPANDING LINER

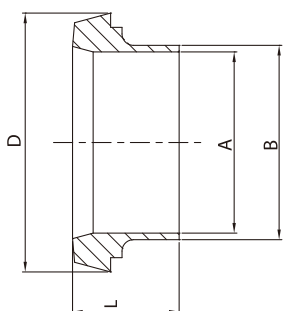
SIZE	A	B	C	D	L
10	10	12.2	18	22	17
15	16	18.2	24	28	17
20	20	22.2	30	36	18
25	26	28.2	35	44	22
32	32	34.2	41	50	25
40	38	40.2	48	56	26
50	50	52.2	61	68	28
65	66	70.3	79	86	32
80	81	85.3	93	100	37
100	100	104.3	114	121	44
125	125	129.3	137	150	34
150	150	154.3	163	176	37



Part no:DINU14

## DIN-15R EXPANDING MALE

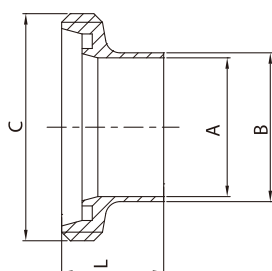
SIZE	A	B	C	D	L
10	10	12.2	18	RD 28*1/8	21
15	16	18.2	24	RD 34*1/8	21
20	20	22.2	30	RD 44*1/6	24
25	26	28.2	35	RD 52*1/6	29
32	32	34.2	41	RD 58*1/6	32
40	38	40.2	48	RD 65*1/6	33
50	50	52.2	61	RD 78*1/6	35
65	66	70.3	79	RD 95*1/6	40
80	81	85.3	93	RD 110*1/4	45
100	100	104.3	114	RD 130*1/4	54
125	125	129.3	137	RD 160*1/4	46
150	150	154.3	163	RD 190*1/4	50



Part no:DINU15

## DIN-14I IMPERIAL WELDING LINER

SIZE	A	B	D	L
1/2"	9.4	12.7	22	17
3/4"	15.75	19.05	36	18
1"	22.1	25.4	44	22
1 1/2"	34.8	38.1	56	26
2"	47.5	50.8	68	28
2 1/2"	60.2	63.5	86	32
3"	72.9	76.2	100	37
4"	97.6	101.6	121	44



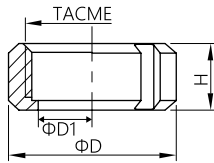
Part no:DINU16

## DIN-15I IMPERIAL WELDING MALE

SIZE	A	B	C	L
1/2"	9.4	12.7	RD 28*1/8	21
3/4"	15.75	19.05	RD 44*1/6	24
1"	22.1	25.4	RD 52*1/6	29
1 1/2"	34.8	38.1	RD 65*1/6	33
2"	47.5	50.8	RD 78*1/6	35
2 1/2"	60.2	63.5	RD 95*1/6	40
3"	72.9	76.2	RD 110*1/4	45
4"	97.6	101.6	RD 130*1/4	54

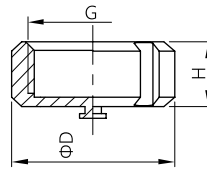
# 由任.FORGED UNION

## SMS UNION



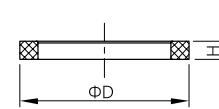
**SMS-13R ROUND NUT 6 SLOTS**  
Part no:SMSU01

Size	D	D1	G	H
ø25	50	32	Rd40×1/6	20
ø32	60	40	Rd48×1/6	21
ø38	72	51	Rd60×1/6	22
ø51	82	60.5	Rd70×1/6	23
ø63	98	75	Rd85×1/6	26
ø76	112	86	Rd98×1/6	27
ø89	125	100	Rd110×1/6	28
ø102 小	140	113	Rd125×1/6	30
ø102 大	148	120.5	Rd132×1/6	31



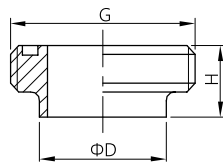
**SMS-13RBN ROUND BLANK NUT**  
Part no:SMSU02

Size	D	G	H
ø25	50	Rd40×1/6	20
ø32	60	Rd48×1/6	21
ø38	72	Rd60×1/6	22
ø51	82	Rd70×1/6	23
ø63	98	Rd85×1/6	26
ø76	112	Rd98×1/6	27
ø89	125	Rd110×1/6	28
ø102 小	140	Rd125×1/6	30
ø102 大	148	Rd132×1/6	31



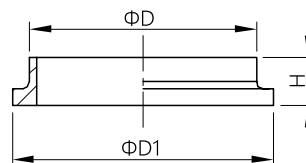
**SEAL RING L TYPE**  
(EPDM, SILICONE, VITON)  
Part no:SMSU03

Size	D1	H
ø25	31.8	5.5
ø32	40	5.5
ø38	48	5.5
ø51	61	5.5
ø63	73	5.5
ø76	86	6
ø89	98	6
ø102	114	6



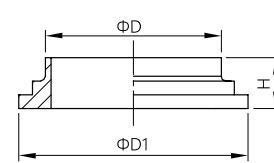
**SMS SHORT WELDING MALE**  
Part no:SMSU04

Size	D	G	H
ø25	25.4	Rd40×1/6	18
ø32	31.8	Rd48×1/6	19
ø38	38.1	Rd60×1/6	21
ø51	50.8	Rd70×1/6	21
ø63	63.5	Rd85×1/6	24
ø76	76.2	Rd98×1/6	24
ø89	89	Rd105×1/6	24
ø102	101.6	Rd125×1/4	27
ø102	101.6	Rd132×1/6	30



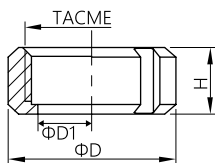
**SMS SHORT WELDING LINER**  
Part no:SMSU05

Size	D	D1	H
ø25	25.4	35.5	14
ø32	31.8	43.5	14
ø38	38.1	55.5	14
ø51	50.8	65.5	15
ø63	63.5	80	15
ø76	76.2	90	16
ø89	89	105	16
ø102	101.6	118	17
ø102	101.6	127.5	19

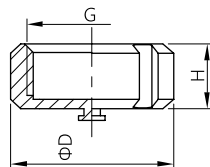


**SMS SHORT WELDING LINER(Stepped)**  
Part no:SMSU06

Size	D	D1	H
ø25	25.4	35.5	14
ø32	31.8	43.5	14
ø38	38.1	55.5	14
ø51	50.8	65.5	15
ø63	63.5	80.5	15
ø76	76.2	90	16
ø89	89	105	16
ø102	101.6	118	17
ø102	101.6	127.5	19



Part no:SMSU07



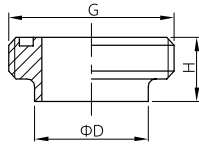
Part no:SMSU08

**SMS LONG TYPE ROUND NUT/BLIND NUT**

Size	D	G	H
ø25	51	Rd40×1/6	20
ø38	74	Rd60×1/6	25
ø51	84	Rd70×1/6	26
ø63	100	Rd85×1/6	30
ø76	114	Rd98×1/6	32
ø102 小	140	Rd125×1/6	32
ø102 大	154	Rd132×1/6	45

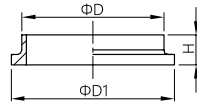
# 由任.FORGED UNION

## SMS UNION



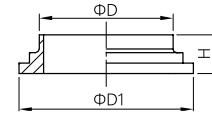
**SMS LONG WELDING MALE**  
Part no:SMSU09

Size	D	G	H
ø25	25.4	Rd40×1/6	19
ø38	38.1	Rd60×1/6	23
ø51	50.8	Rd70×1/6	23
ø63	63.5	Rd85×1/6	27
ø76	76.2	Rd98×1/6	27
ø102 小	101.6	Rd125×1/6	30
ø102 大	101.6	Rd132×1/6	35



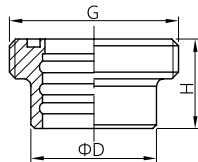
**SMS LONG WELDING LINER**  
Part no:SMSU10

Size	D	D1	H
ø25	25.4	35.5	15.5
ø38	38.1	55.5	16
ø51	50.8	65.5	17
ø63	63.5	80	17
ø76	76.2	93	19
ø102 小	101.6	118	19
ø102 大	101.6	127.5	19



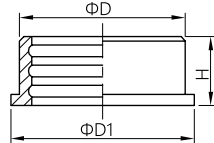
**SMS LONG WELDING LINER (STEPPED)**  
Part no:SMSU11

Size	D	D1	H
ø25	25.4	35.5	15.5
ø38	38.1	55.5	16
ø51	50.8	65.5	17
ø63	63.5	80.5	17
ø76	76.2	93.5	19
ø102 小	101.6	118	19
ø102 大	101.6	127.5	19



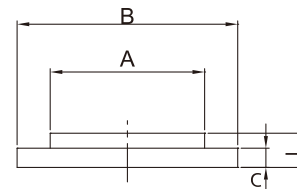
**SMS-15R EXPANDING MALE**  
Part no:SMSU12

Size	D	G	H
Φ25	25.6	Rd40×1/6	20
Φ32	32.2	Rd48×1/6	20
Φ38	38.2	Rd60×1/6	23
Φ51	51.2	Rd70×1/6	25
Φ63	63.7	Rd85×1/6	30
Φ76	76.4	Rd98×1/6	35
Φ102 小	101.8	Rd125×1/6	30
Φ102 大	104.2	Rd132×1/6	30



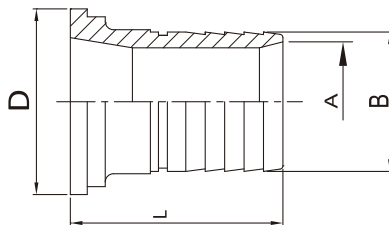
**SMS-14R EXPANDING LINER**  
Part no:SMSU13

Size	D	D1	H
Φ25	32	35.5	17
Φ32	40	43.5	17
Φ38	47.9	55	20
Φ51	60.4	65	20
Φ63	73.5	80	25
Φ76	86.5	93	30
Φ102 小	112.5	118	27
Φ102 大	112.5	118	27



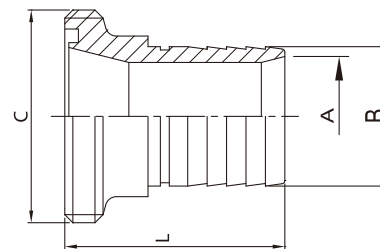
**SMS-14B BLANK END CAP**  
Part no:SMSU14

SIZE	A	B	C	L
25	32	35.5	3.5	7.5
38	48	55	5	9
50	60	65	5	10
63	73.5	80	5	10
76	86	93	5	11
104	118	118	6	11
104-B	128	128	6	11



**SMS-14AHR HOSE ADAPTER**  
Part no:SMSU15

SIZE	A	B	D	L
25	22.2	25	35.5	60.5
38	34	38	55	72
50	47	50.5	65	82
63	59	63.2	80	95
76	71.5	75.5	93	97
104	95	100.8	118	109

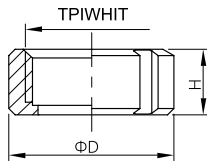


**SMS-15AHR HOSE ADAPTER**  
Part no:SMSU16

SIZE	A	B	C	L
25	22.2	25	RD 40*1/6	64
38	34	38	RD 60*1/6	79
50	47	50.5	RD 70*1/6	89
63	59	63.2	RD 85*1/6	102
76	71.5	75.5	RD 98*1/6	105
104	95	100.8	RD125*1/4	120

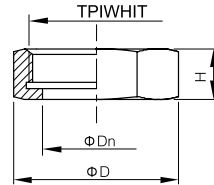
# 由任.FORGED UNION

## RJT UNION



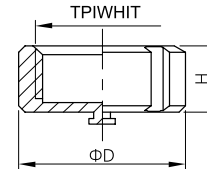
**RJT ROUND NUT**  
Part no:RJTU01

Size	D	D1	TPIWHIT	H
1"	33.3	58.5	45.7×8	22
1 1/2"	46	74	58.4×8	22
2"	58.7	85.5	72.7×6	22
2 1/2"	71.4	98.5	85.4×6	22
3"	84.1	111.6	98.1×6	22
4"	109.7	138	123.5×6	22
6"	163	197	174.3×6	23.5



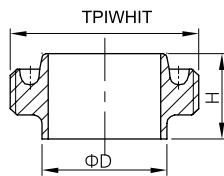
**RJT HEX NUT**  
Part no:RJTU02

Size	D	D1	TPIWHIT	H
1"	33.3	58.66	45.7×8	22
1 1/2"	46	73.9	58.4×8	22
2"	58.7	90.07	72.7×6	22
2 1/2"	71.4	105.08	85.4×6	22
3"	84.1	120.09	98.1×6	22
4"	109.7	150.11	123.5×6	22
6"	163	203.5	174.3×6	24



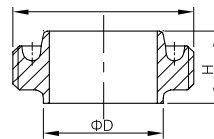
**RJT BLIND NUT**  
Part no:RJTU03

Size	D	TPIWHIT	H
1"	56	45.7×8	22
1 1/2"	69	58.4×8	22
2"	83	72.7×6	22
2 1/2"	97	85.4×6	22
3"	110	98.1×6	22
4"	136	123.5×6	22
6"	197	174.3×6	23.5



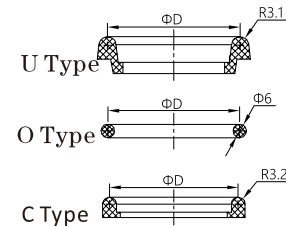
**RJT LONG MALE**  
Part no:RJTU04

Size	D	TPIWHIT	H
1"	25.65	45.7×8	27
1 1/2"	38.35	58.4×8	27
2"	51.05	72.7×6	27
2 1/2"	63.75	85.4×6	27
3"	76.45	98.1×6	27
4"	101.85	123.5×6	27
6"	152.4	174.3×6	24



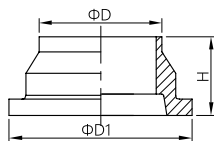
**RJT SHORT MALE**  
Part no:RJTU05

Size	D	TPIWHIT	H
1"	25.65	45.7×8	21.5
1 1/2"	38.35	58.4×8	21.5
2"	51.05	72.7×6	21.5
2 1/2"	63.75	85.4×6	21.5
3"	76.45	98.1×6	21.5
4"	101.85	123.5×6	21.5



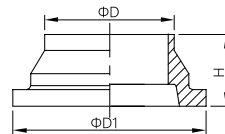
**RJT SEAL RING**  
Part no:RJTU06

Size	D
1"	33.3
1 1/2"	46
2"	58.7
2 1/2"	71.4
3"	84.1
4"	109.5
6"	162.6



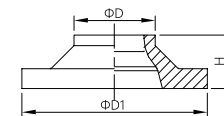
**RJT LONG LINER(AS)**  
Part no:RJTU07

Size	D	D1	H
1"	25.65	41.3	27
1 1/2"	38.35	54	27
2"	51.05	66.7	27
2 1/2"	63.75	79.4	27
3"	76.45	92.1	27
4"	101.85	117.5	27



**RJT SHORT LINER(AS)**  
Part no:RJTU08

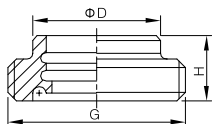
Size	D	D1	H
1"	25.65	41.3	19.5
1 1/2"	38.35	54	19.5
2"	51.05	66.7	19.5
2 1/2"	63.75	79.4	19.5
3"	76.45	92.1	19.5
4"	101.85	117.5	19.5
6"	152.4	169.1	23.5



**RJT LINER(BS)**  
Part no:RJTU09

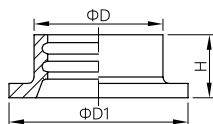
Size	D	D1	H
1"	25.65	41.3	10/12.7
1 1/2"	38.35	54	10/12.7
2"	51.05	66.7	10/12.7
2 1/2"	63.75	79.4	10/12.7
3"	76.45	92.1	10/12.7
4"	101.85	117.5	12.7/25.4

# 由任.FORGED UNION



**RJT EXPANDING MALE**  
Part no:SMSU10

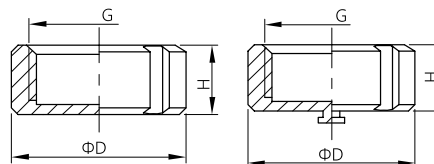
Size	D	TPI\WHIT	H
1"	32.5	45.7×8	20
1 1/2"	45.2	58.4×8	24
2"	57.9	72.7×6	28
2 1/2"	70.6	85.4×6	32
3"	83.3	98.1×6	32
4"	108.7	123.8×6	32



**RJT EXPANDING LINER**  
Part no:SMSU11

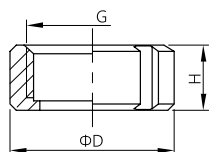
Size	D	D1	H
1"	32.5	41.3	20
1 1/2"	45.2	54	24
2"	57.9	66.7	28
2 1/2"	70.6	79.4	32
3"	83.3	92.1	32
4"	108.7	117.5	32

## DANSK UNION



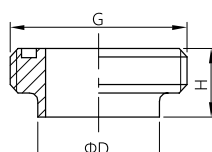
**DS BLIND NUT**  
Part no:DSKU01

Size	D	G	H
1"	57	Rd44×1/6	20
1 1/4"	65	Rd52×1/6	20
1 1/2"	71	Rd58×1/6	20
2"	86	Rd72×1/6	22
2 1/2"	103	Rd88×1/6	24
3"	115	Rd100×1/6	25
4"	148	Rd130×1/4	30



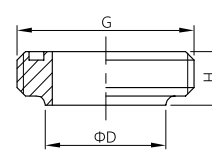
**DS ROUND NUT**  
Part no:DSKU02

Size	D1	D	G	H
1"	34.8	57	Rd44×1/6	20
1 1/4"	42.5	65	Rd52×1/6	20
1 1/2"	48.5	71	Rd58×1/6	20
2"	62.5	86	Rd72×1/6	22
2 1/2"	76.5	103	Rd88×1/6	24
3"	88.5	115	Rd100×1/6	25
4"	117	148	Rd130×1/4	30



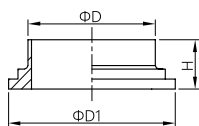
**DS LONG MALE**  
Part no:DSKU03

Size	D	G	H
1"	25	Rd44×1/6	20
1 1/4"	32	Rd52×1/6	20
1 1/2"	38	Rd58×1/6	20
2"	51	Rd72×1/6	22
2 1/2"	63.5	Rd88×1/6	24
3"	76	Rd100×1/6	25
4"	101.6	Rd130×1/4	30



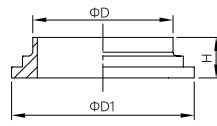
**DS SHORT MALE**  
Part no:DSKU04

Size	D	G	H
1"	25	Rd44×1/6	18.5
1 1/2"	38	Rd58×1/6	20
2"	51	Rd72×1/6	20
2 1/2"	63.5	Rd88×1/6	24
3"	76	Rd100×1/6	24
4"	101.6	Rd130×1/4	24



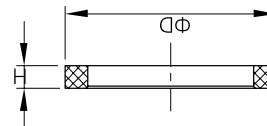
**DS LONG LINER**  
Part no:DSKU05

Size	D	D1	H
1"	25	39.5	16
1 1/4"	32	47.5	16
1 1/2"	38	53.5	18
2"	51	67.5	20
2 1/2"	63.5	83.5	22
3"	76	95.5	24
4"	101.6	123.5	30



**DS SHORT LINER**  
Part no:DSKU06

Size	D	D1	H
1"	25	39.5	11
1 1/2"	38	53.5	11
2"	51	67.5	11
2 1/2"	63.5	83.5	12
3"	76	95.5	12
4"	101.6	123.5	12



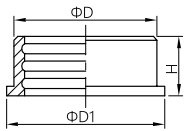
**DS SEAL**  
Part no:DSKU07

Size	D	H
1"	32.2	5.5
1 1/4"	41	5.5
1 1/2"	47	5.5
2"	59	5.5
2 1/2"	74.5	5.5
3"	88	5.5
4"	116	5.5

# 由任.FORGED UNION

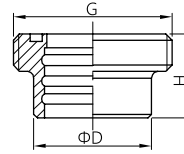
## DANSK UNION

**DS EXPANDING LINER**  
Part no:DSKU08



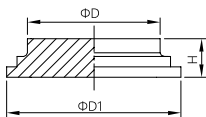
Size	D	D1	H
1"	32	39.5	16
1 1/4"	40	47.5	16
1 1/2"	47.9	53.5	18
2"	60.4	67.5	20
2 1/2"	73.5	83.5	22
3"	86.5	95.5	24
4"	112.5	123.5	30

**DS EXPANDING MALE**  
Part no:DSKU09



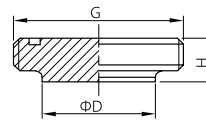
Size	D	G	H
1"	25.2	Rd44×1/6	20
1 1/4"	32.2	Rd52×1/6	20
1 1/2"	38.2	Rd58×1/6	22
2"	51.2	Rd72×1/6	24
2 1/2"	63.7	Rd88×1/6	26
3"	76.4	Rd100×1/6	28
4"	101.8	Rd130×1/4	34

**DS BLANK LINER**  
Part no:DSKU10



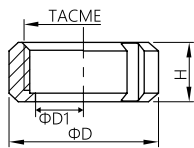
Size	D	D1	H
1"	25	39.5	16
1 1/4"	32	47.5	16
1 1/2"	38	53.5	18
2"	51	67.5	20
2 1/2"	63.5	83.5	22
3"	76	95.5	24
4"	101.6	123.5	30

**DS BLANK MALE**  
Part no:DSKU11



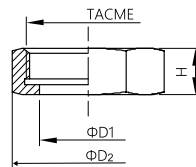
Size	D	G	H
1"	25	Rd44×1/6	20
1 1/4"	32	Rd52×1/6	20
1 1/2"	38	Rd58×1/6	22
2"	51	Rd72×1/6	24
2 1/2"	63.5	Rd88×1/6	26
3"	76	Rd100×1/6	28
4"	101.6	Rd130×1/4	34

## IDF/ISO UNION

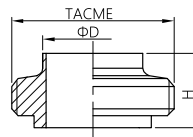


**ISO/IDF NUT**  
Part no:ISOU01

Size	D1	TACME	D	D2	H
1"	30.5	38.3×8	48	53.1	30
1 1/2"	45	51.8×8	62	69.3	30
2"	57	65.3×8	76	86.6	30
2 1/2"	70.7	78.8×8	90	103.9	30
3"	83.3	92.3×8	103	121.2	30
4"(ISO)	110	119.4×8	133	155.9	35
4"(IDF)	112	127.2×6	142	165.1	35

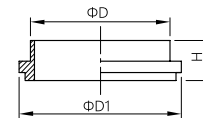


**ISO BLIND NUT**  
Part no:ISOU02



**ISO/IDF MALE**  
Part no:ISOU03

Size	D		TACME	H
	ISO	IDF		
1"	25.6	25.4	37.13×8	21.5
1 1/2"	38.6	38.1	50.65×8	21.5
2"	51.6	50.8	64.16×8	21.5
2 1/2"	64.1	63.5	77.7×8	21.5
3"	76.7	76.2	91.2×8	21.5
4"(ISO)	102.5	-	118.4×8	21.5
4"(IDF)	-	101.6	125.9×6	30



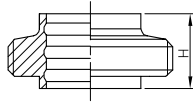
**ISO/IDF LINER**  
Part no:ISOU04

Size	D		D1	H
	ISO	IDF		
1"	25.6	25.4	33.8	21.5
1 1/2"	38.6	38.1	47	21.5
2"	51.6	50.8	60.5	21.5
2 1/2"	64.1	63.5	74	21.5
3"	76.7	76.2	87.5	21.5
4"(ISO)	102.5	-	114.4	21.5
4"(IDF)	-	101.6	120.6	30



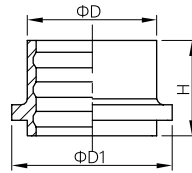
# 由任.FORGED UNION

## IDF/ISO UNION



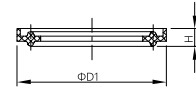
ISO/IDF EXPANDING MALE  
Part no:ISOU05

	D	TACME	H
1"	29.2	37.13×8	16.5
1 1/2"	42.7	50.65×8	19.5
2"	56.2	64.16×8	19.5
2 1/2"	69.9	77.7×8	25
3"	82.6	91.2×8	30
4"	111.1	125.9×6	35



ISO/IDF EXPANDING LINER  
Part no:ISOU06

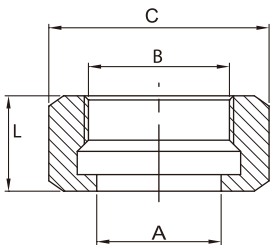
Size	D	D1	H
1"	25.5	33.8	20
1 1/2"	38.2	47	20
2"	50.9	60.5	25
2 1/2"	63.6	74	30
3"	76.3	84.5	30
4"	101.7	120.6	30



ISO/IDF GASKET  
Part no:ISOU07

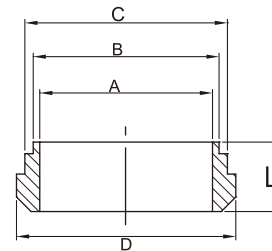
Size	D1	H
1"	32.5	7
1 1/2"	46	7
2"	59.5	7
2 1/2"	73	7
3"	86.5	7
4"(ISO)	113.1	7
4"(IDF)	119	9.6

## 3A UNION



3A HEX NUT  
Part no:3AU01

SIZE	A	B	C	L
1"	30.3	38.02 ACME 8TPI	46	23
1.5"	43.4	51.54 ACME 8TPI	61.1	24.6
2"	56.5	65.05 ACME 8TPI	76.2	27
2.5"	69.6	78.56 ACME 8TPI	91.3	29.6
3"	82.7	92.08 ACME 8TPI	106.4	32.5
4"	108.9	120.14 ACME 6TPI	137.6	38.1

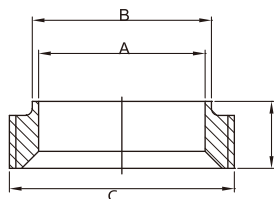


3A-14PRF SHORT BEVEL SEAT WELD LINER  
Part no:3AU02

SIZE	A	B	C	D	L
1"	22.1	25.4	29.5	33.3	18.3
1.5"	34.8	38.1	42.6	46.8	18.3
2"	47.5	50.8	55.7	60.3	19.1
2.5"	60.2	63.5	68.8	73.8	22.3
3"	72.9	76.2	91.9	87.3	23.1
4"	97.6	101.6	108.1	114.3	26.2

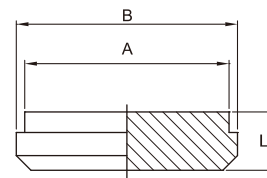
# 由任.FORGED UNION

## 3A UNION



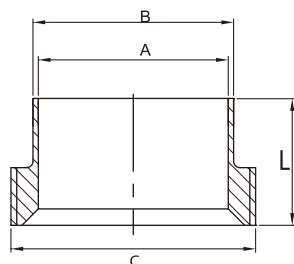
**3A-15TRF SHORT BEVEL SEAT WELD MALE**  
Part no:3AU03

Size	A	B	C	L
1"	22.1	25.4	37.13ACME 8TPI	18.3
1.5"	34.8	38.1	50.65ACME 8TPI	18.3
2"	47.5	50.8	64.17ACME 8TPI	19.1
2.5"	60.2	63.5	77.67ACME 8TPI	22.2
3"	72.9	76.2	91.19ACME 8TPI	23.1
4"	97.6	101.6	119.25ACME 8TPI	26.2



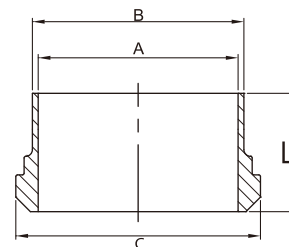
**3A-16A BLANK END CAP**  
Part no:3AU04

Size	A	B	L
1"	29.5	33.3	11.9
1.5"	42.6	46.8	14.3
2"	55.7	60.3	15.9
2.5"	68.8	73.8	16.7
3"	81.9	87.3	18.3
4"	108	114.3	20.6



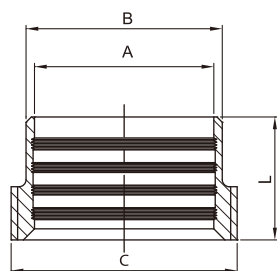
**3A-15A LONG WELD MALE**  
Part no:3AU05

Size	A	B	C	L
1"	22.1	25.4	37.13ACME8TPI	34.9
1.5"	34.8	38.1	50.65ACME8TPI	38.1
2"	47.5	50.8	64.17ACME8TPI	38.1
2.5"	60.2	63.5	77.67ACME8TPI	44.5
3"	72.9	76.2	91.19ACME8TPI	44.5
4"	97.6	101.6	119.25ACME8TPI	44.5



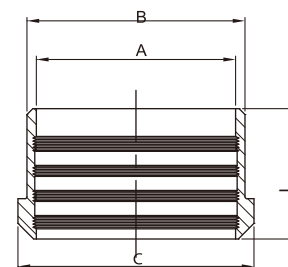
**3A-14A LONG WELD LINER**  
Part no:3AU06

Size	A	B	C	L
1"	22.1	25.4	33.3	34.9
1.5"	34.8	38.1	46.8	38.1
2"	47.5	50.8	60.3	38.1
2.5"	60.2	63.5	73.8	44.5
3"	72.9	76.2	87.3	44.5
4"	97.6	101.6	114.3	44.5



**3A-15R RECESSLESS MALE**  
Part no:3AU07

Size	A	B	C	L
1"	22.5	29.5	37.13ACME8TPI	20.6
1.5"	38.2	42.6	50.65ACME8TPI	28.6
2"	50.9	55.7	64.17ACME8TPI	34.9
2.5"	63.6	68.8	77.67ACME8TPI	38.1
3"	76.3	81.9	91.19ACME8TPI	41.3
4"	101.7	108.1	119.25ACME8TPI	41.3



**3A-14R RECESSLESS LINER**  
Part no:3AU08

Size	A	B	C	L
1"	22.5	29.5	33.3	19.1
1.5"	38.2	42.6	46.8	28.6
2"	50.9	55.7	60.3	33.3
2.5"	63.6	68.8	73.8	34.9
3"	76.3	81.9	87.3	36.5
4"	101.7	108.1	114.3	38.1