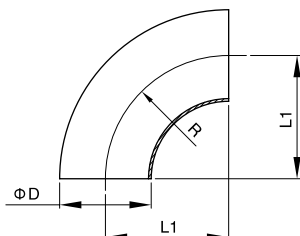


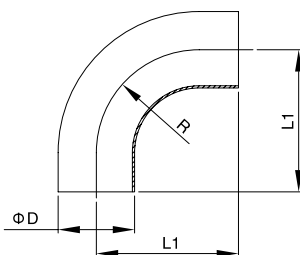
DIN焊接管件.DIN WELDING FITTING

DIN Welded short type elbow 90°
Part no:DINWF01



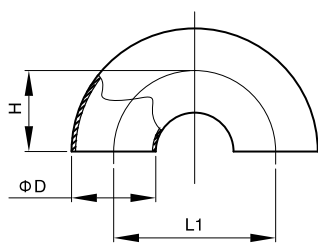
Size	L1	D	R
DN10	26.0	12.0	26.0
DN15	35.0	18.0	35.0
DN20	40.0	22.0	40.0
DN25	50.0	28.0	50.0
DN32	55.0	34.0	55.0
DN40	60.0	40.0	60.0
DN50	70.0	52.0	70.0
DN65	80.0	70.0	80.0
DN80	90.0	85.0	90.0
DN100	100.0	104.0	100.0
DN125	187.0	129.0	187.0
DN150	225.0	154.0	225.0
DN200	300	204	300
DN250	375	254	375
DN300	450	306	450

DIN Welded long type elbow 90°
Part no:DINWF02



Size	L1	D	R
DN10	38.0	12.0	26.0
DN15	47.0	18.0	35.0
DN20	52.0	22.0	40.0
DN25	70.0	28.0	50.0
DN32	78.0	34.0	55.0
DN40	85.0	40.0	60.0
DN50	97.0	52.0	70.0
DN65	110.0	70.0	80.0
DN80	118.0	85.0	90.0
DN100	140.0	104.0	100.0

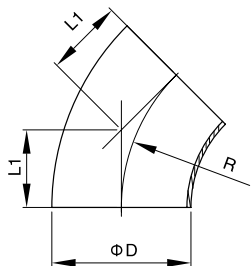
DIN U bend 180°
Part no:DINWF03



Size	L1	D	H
DN10	52.0	12.0	26.0
DN15	70.0	18.0	35.0
DN20	80.0	22.0	40.0
DN25	100.0	28.0	50.0
DN32	110.0	34.0	55.0
DN40	120.0	40.0	60.0
DN50	140.0	52.0	70.0
DN65	160.0	70.0	80.0
DN80	180.0	85.0	90.0
DN100	200.0	104.0	100.0
DN125	375.0	129.0	187.5
DN150	450.0	154.0	225.0

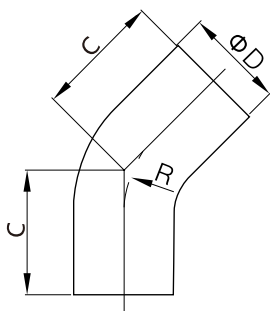
DIN焊接管件.DIN WELDING FITTING

DIN Welded short type elbow 45°
Part no: DINWF04



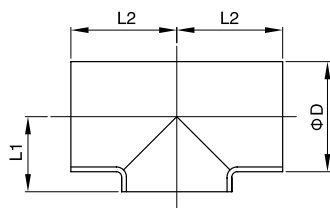
Size	L1	D	R
DN10	10.7	12.0	26.0
DN15	14.5	18.0	35.0
DN20	16.5	22.0	40.0
DN25	20.7	28.0	50.0
DN32	22.8	34.0	55.0
DN40	24.8	40.0	60.0
DN50	29.0	52.0	70.0
DN65	33.2	70.0	80.0
DN80	37.3	85.0	90.0
DN100	41.5	104.0	100.0
DN125	77.5	129.0	187.0
DN150	93.2	154.0	225.0

DIN Welded elbow 45° with straight end
Part no: DINWF05



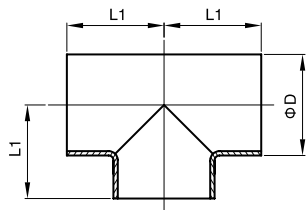
SIZE	D	C	R	T
DN25	28	20	50	1.5
DN32	34	23	55	1.5
DN40	40	20	60	1.5
DN50	52	27	70	1.5
DN65	70	30	80	2.0
DN80	85	33	90	2.0
DN100	104	40	100	2.0

DIN Welded short tee
Part no: DINWF06



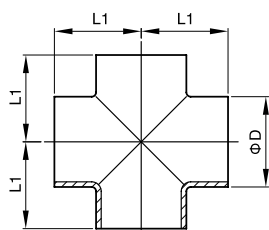
Size	L1	L2	D
DN10	7.5	26.0	12.0
DN15	10.5	35.0	18.0
DN20	12.5	40.0	22.0
DN25	16.0	50.0	28.0
DN32	19.5	55.0	34.0
DN40	22.5	60.0	40.0
DN50	30.0	70.0	52.0
DN65	39.5	80.0	70.0
DN80	47.5	90.0	85.0
DN100	58.0	100.0	104.0
DN125	70.5	187.0	129.0
DN150	83.0	225.0	154.0

DIN焊接管件.DIN WELDING FITTING



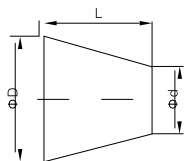
DIN Welded long equal tee
Part no: DINWF07

Size	L1	D
DN10	26.0	12.0
DN15	35.0	18.0
DN20	40.0	22.0
DN25	50.0	28.0
DN32	55.0	34.0
DN40	60.0	40.0
DN50	70.0	52.0
DN65	80.0	70.0
DN80	90.0	85.0
DN100	100.0	104.0
DN125	187.0	129.0
DN150	225.0	154.0

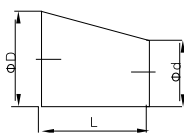


DIN Cross
Part no: DINWF08

Size	L1	D
DN25	50.0	28.0
DN32	55.0	34.0
DN40	60.0	40.0
DN50	70.0	52.0
DN65	80.0	70.0
DN80	90.0	85.0
DN100	100.0	104.0



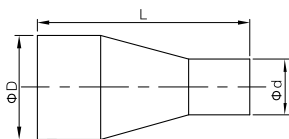
Part no: DINWF09



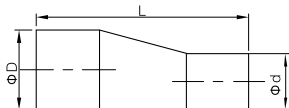
Part no: DINWF10

DIN Welded short type reducer

Size	D	d	L	Size	D	d	L
DN15-DN10	18	12	11	DN65-DN32	70	34	62
DN20-DN10	22	12	18	DN65-DN40	70	40	51
DN20-DN15	22	18	7	DN65-DN50	70	52	29
DN25-DN15	28	18	18	DN80-DN40	85	40	78
DN25-DN20	28	22	11	DN80-DN50	85	52	56
DN32-DN20	34	22	22	DN80-DN65	85	70	27
DN32-DN25	34	28	11	DN100-DN50	104	52	90
DN40-DN20	40	22	33	DN100-DN65	104	70	61
DN40-DN25	40	28	22	DN100-DN80	104	85	34
DN40-DN32	40	34	11	DN125-DN80	129	85	80
DN50-DN25	52	28	44	DN125-DN100	129	104	45
DN50-DN32	52	34	33	DN150-DN100	154	104	90
DN50-DN40	52	40	22	DN150-DN125	154	129	45
DN65-DN25	70	28	73	DN200-DN150	204	154	90



Part no: DINWF11



Part no: DINWF12

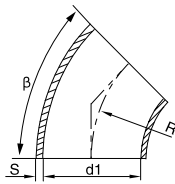
DIN Long type Welded Reducer with straight end

Size	D	d	L	Size	D	d	L
DN25-DN15	22	18	60	DN65-DN40	70	40	120
DN25-DN20	28	22	60	DN65-DN50	70	52	130
DN32-DN20	34	22	80	DN80-DN40	85	40	140
DN32-DN25	34	28	80	DN80-DN50	85	52	125
DN40-DN20	40	22	102	DN80-DN65	85	70	120
DN40-DN25	40	28	102	DN100-DN50	104	52	160
DN40-DN32	40	34	88	DN100-DN65	104	70	127
DN50-DN25	52	28	115	DN100-DN80	104	85	120
DN50-DN32	52	34	129	DN125-DN80	129	85	150
DN50-DN40	52	40	113	DN125-DN100	129	104	150
DN65-DN25	70	28	125	DN150-DN100	154	104	170
DN65-DN32	70	34	125	DN150-DN125	154	129	170

DIN焊接管件.DIN WELDING FITTING

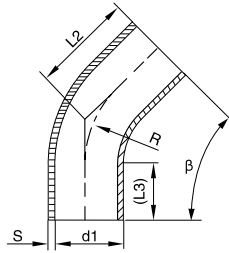
DIN11852 TUBE FITTINGS

Short elbow 45°



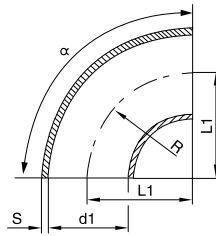
DINWF13

Long elbow 45°



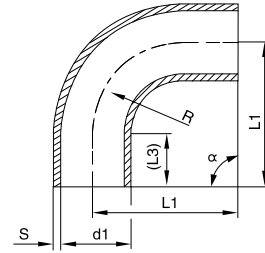
DINWF14

Short elbow 90°



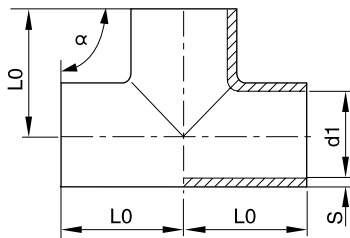
DINWF15

Long elbow 90°

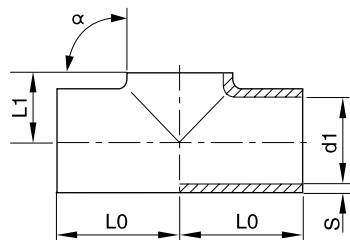


DINWF16

Size	OD*t	d1	S	R	L0	L1	L2	L3	L4
10	13x1.5	10	1.5	26	26	51	35.8	25	52
15	19x1.5	16	1.5	35	35	60	39.5	25	70
20	23x1.5	20	1.5	40	40	65	41.6	25	80
25	29x1.5	26	1.5	50	50	90	60.7	40	100
32	35x1.5	32	1.5	55	55	95	62.8	40	110
40	41x1.5	38	1.5	60	60	100	64.9	40	120
50	53x1.5	50	1.5	70	70	110	69	40	140
65	70x2.0	66	2.0	80	80	120	73.1	40	160
80	85x2.0	81	2.0	90	90	145	92.3	55	180
100	104x2.0	100	2.0	100	100	155	96.4	55	200
125	129x2.0	125	2.0	187.5	187.5	245	135.2	57.5	375
150	154x2.0	150	2.0	225	225	-	-	-	-
200	204x2.0	200	2.0	300	300	-	-	-	-



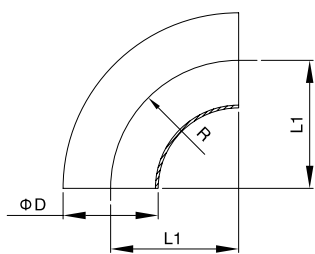
Long Equal tee DINWF17



Short type tee DINWF18

Size	OD*t	d1	S	L0	L1
10	13x1.5	10	1.5	35	-
15	19x1.5	16	1.5	35	11.0±0.5
20	23x1.5	20	1.5	40	13.0±0.5
25	29x1.5	26	1.5	50	16.0±0.75
32	35x1.5	32	1.5	55	19.5±0.75
40	41x1.5	38	1.5	60	23.0±1
50	53x1.5	50	1.5	70	30.0±1
65	70x2.0	66	2.0	80	40.0±1.5
80	85x2.0	81	2.0	90	47.5±1.5
100	104x2.0	100	2.0	100	58.0±1.5
125	129x2.0	125	2.0	187.5	74.0±3
150	154x2.0	150	2.0	225	90.0±3
200	204x2.0	200	2.0	300	115.0±3.75

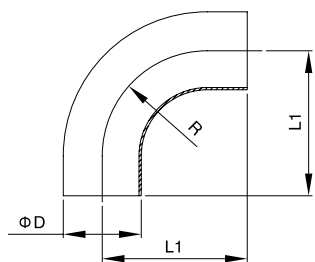
SMS 焊接管件.SMS WELDING FITTING



SMS Welded short type elbow 90°

Part no:SMSWF01

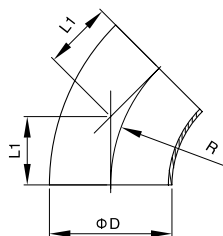
Size	L1	D	R
25	38.1	25.4	38.1
32	47.7	31.8	47.7
38	57.1	38.1	57.1
51	76.2	50.8	76.2
63	95.2	63.5	95.2
76	114.3	76.2	114.3
102	152.4	101.6	152.4



SMS Welded long type elbow 90° with straight end

Part no:SMSWF02

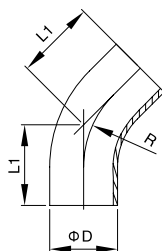
Size	L1	D	R
25	55	25.4	25.4
38	70	38.1	38.1
51	82	50.8	50.8
63	105	63.5	63.5
76	110	76.2	76.2
102	150	101.6	101.6



SMS Welded short type elbow 45° without straight end

Part no:SMSWF03

Size	L1	D	R
25	15.5	25.4	38.1
38	23.6	38.1	57.2
51	31.6	50.8	76.2
63	39.5	63.5	95.3
76	47.2	76.2	114.3
102	63.0	101.6	152.4

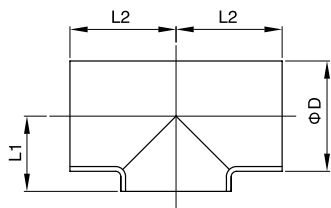


SMS Welded long type elbow 45° with straight end

Part no:SMSWF04

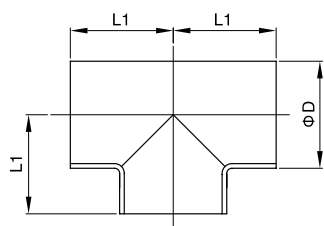
Size	L1	D	R
25	45	25.4	25.4
38	56.7	38.1	38.1
51	63.3	50.8	50.8
63	80.8	63.5	63.5
76	82	76.2	76.2
102	108.9	101.6	101.6

SMS焊接管件.SMS WELDING FITTING



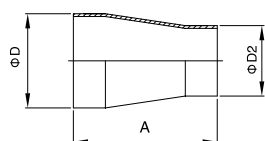
SMS Welded short tee
Part no:SMSWF05

Size	L1	L2	D
25	15.0	55.0	25.4
38	21.5	70.0	38.1
51	29.0	82.0	50.8
63	36.0	105.0	63.5
76	43.0	110.0	76.2
102	57.0	150.0	101.6



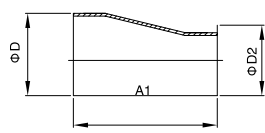
SMS Welded long equal tee
Part no:SMSWF06

Size	L1	D
25	55.0	25.4
38	70.0	38.1
51	82.0	50.8
63	105.0	63.5
76	110.0	76.2
102	150.0	101.6



Concentric

Part no:SMSWF07

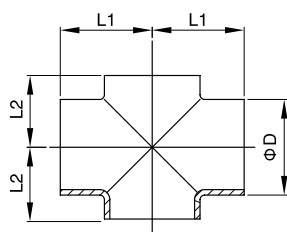


Eccentric

Part no:SMSWF08

SMS Welded Reducer

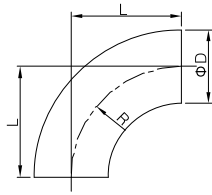
Size	A	A1	D	D2
1.5" / 1.0"	39.0	46.0	38.1	25.4
2.0" / 1.0"	57.0	68.0	50.8	25.4
2.0" / 1.5"	39.0	47.0	50.8	38.1
2.5" / 1.0"	74	92	63.5	25.4
2.5" / 1.5"	57.0	70.0	63.5	38.1
2.5" / 2.0"	39.0	44.0	63.5	50.8
3.0" / 1.0"	92	117	76.2	25.4
3.0" / 1.5"	74.0	92.0	76.2	38.1
3.0" / 2.0"	57.0	68.0	76.2	50.8
3.0" / 2.5"	39.0	47.0	76.2	63.5
4.0" / 2.0"	95.0	117.0	101.6	50.8
4.0" / 2.5"	78.0	94.0	101.6	63.5
4.0" / 3.0"	60.0	74.0	101.6	76.2



SMS welded cross
Part no:SMSWF09

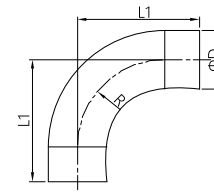
Size	L1	L2	D
25	55.0	15.0	25.4
38	70.0	21.5	38.1
51	82.0	29.0	50.8
63.5	105.0	36.0	63.5
76.2	110.0	43.0	76.2
102	150.0	57.0	101.6

3A 焊接管件 .3A WELDED FITTING

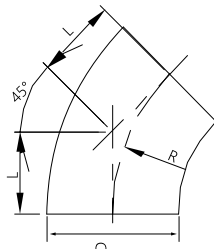


2WCL 90° short type elbow
Part no:3AWF01

Size	D	L	L1	R
1/2"	12.7	19.1	38	19.1
3/4"	19.1	28.5	38	28.5
1"	25.4	38.1	52.4	38.1
1 1/4"	31.8	47.7	69.7	47.7
1 1/2"	38.1	57.2	74.6	57.2
2"	50.8	76.2	103.2	76.2
2 1/2"	63.5	95.3	131.8	95.3
3"	76.2	114.3	160.3	114.3
4"	101.6	152.4	211.1	152.4
6"	152.4	228.6	280	228.6

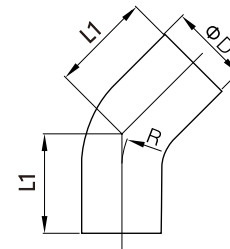


L2S 90° long type Bend
Part no:3AWF02

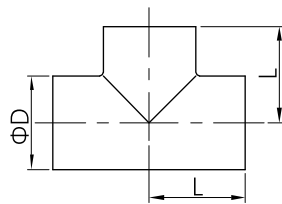


2WK 45° short type elbow
Part no:3AWF03

Size	D	L	L1	R
1/2"	12.7	7.9	19.3	19.1
3/4"	19.1	11.8	19.3	28.5
1"	25.4	15.8	30.1	38.1
1 1/4"	31.8	19.8	41.3	47.7
1 1/2"	38.1	23.8	41.3	57.2
2"	50.8	31.8	58.8	76.2
2 1/2"	63.5	39.7	76.2	95.3
3"	76.2	47.6	93.7	114.3
4"	101.6	63.5	122.2	152.4
6"	152.4	94.7	158.8	228.6

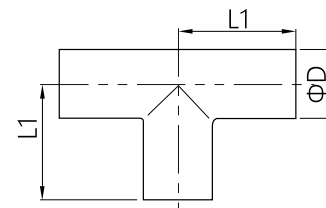


L2KS 45° bend with tangent
Part no:3AWF04

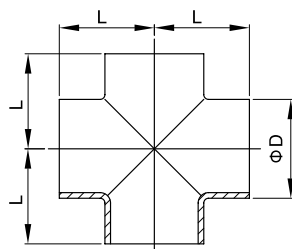


7WWW Short Equal Tee, no tangent
Part no:3AWF05

Size	D	L	L1
1/2"	12.7	38	38
3/4"	19.1	38	38
1"	25.4	28.5	47.6
1 1/4"	31.8	35	55
1 1/2"	38.1	42	57.2
2"	50.8	52.3	76.2
2 1/2"	63.5	59.5	76.2
3"	76.2	65.9	82.6
4"	101.6	87.4	98.4
6"	152.4	127	127

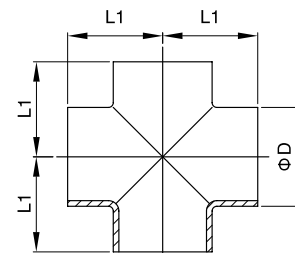


7W Long Equal Tee, with tangent
Part no:3AWF06



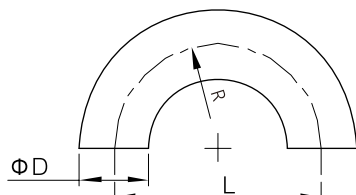
9WWW Short equal cross
Part no:3AWF07

Size	D	L	L1
1"	25.4	28.5	47.6
1 1/2"	38.1	42	57.2
2"	50.8	52.3	76.2
2 1/2"	63.5	59.5	76.2
3"	76.2	65.9	82.6
4"	101.6	87.4	98.4



9WL Long equal cross
Part no:3AWF08

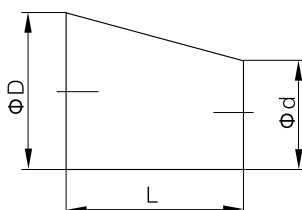
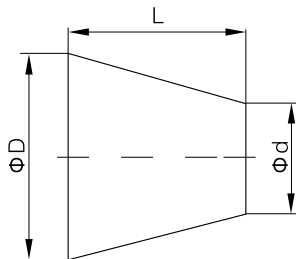
3A 焊接管件.3A WELDED FITTING



2WU 180° Return Bend
Part no:3AWF09

Size	D	L	R
1"	25.4	76.2	38.1
1 1/2"	38.1	114.3	57.2
2"	50.8	152.4	76.2
2 1/2"	63.5	190.5	95.3
3"	76.2	228.6	114.3
4"	101.6	304.8	152.4

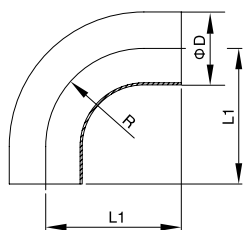
31W Concentric Reducer
Part no:3AWF10



32W Eccentric Reducer
Part no:3AWF11

Size	D	d	L
3/4"-1/2"	19.1	12.7	25.4
1"-1/2"	25.4	12.7	38.1
1"-3/4"	25.4	19.1	25.4
1 1/2"-1/2"	38.1	12.7	63.5
1 1/2"-3/4"	38.1	19.1	50.8
1 1/2"-1"	38.1	25.4	50.8
2"-1/2"	50.8	12.7	114.3
2"-3/4"	50.8	19.1	101.6
2"-1"	50.8	25.4	101.6
2"-1 1/2"	50.8	38.1	50.8
2 1/2"-1/2"	63.5	12.7	165
2 1/2"-3/4"	63.5	19.1	152.4
2 1/2"-1	63.5	25.4	152.4
1/2"	63.5	38.1	101.6
2 1/2"-2"	63.5	50.8	50.8
3"-1"	76.2	25.4	203.2
3"-1 1/2"	76.2	38.1	152.4
3"-2"	76.2	50.8	101.6
3"-2 1/2"	76.2	63.5	50.8
4"-1"	101.6	25.4	304.9
4"-1 1/2"	101.6	38.1	254
4"-2"	101.6	50.8	203.2
4"-2 1/2"	101.6	63.5	152.4
4"-3"	101.6	76.2	101.6
6"-3"	152.4	76.2	155.7
6"-4"	152.4	101.6	155.7

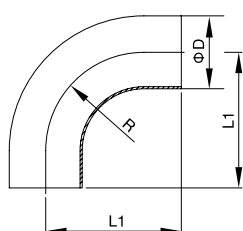
BS4825 焊接管件.BS4825 WELDED FITTING



90° Welded Elbow

Part no:BSWF01

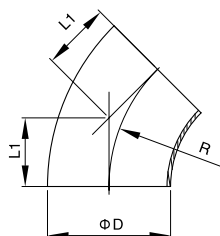
Size	L1	R	D
1"	43.5	38.1	25.4
1 1/2"	63.5	57.2	38.1
2"	88.5	76.2	50.8
2 1/2"	113.5	95.3	63.5
3"	133.5	114.3	76.2
4"	173.5	152.4	101.6



90° Welded Elbow with straight ends

Part no:BSWF02

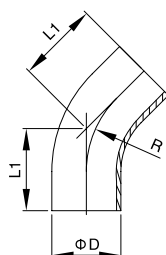
Size	L1	R	D
1"	65.0	38.1	25.4
1 1/2"	85.0	57.2	38.1
2"	110.0	76.2	50.8
2 1/2"	135.0	95.3	63.5
3"	155.0	114.3	76.2
4"	195.0	152.4	101.6



45° Short welded Elbow

Part no:BSWF03

Size	L1	D	R
1"	15.8	25.4	38.1
1 1/2"	23.7	38.1	57.2
2"	31.8	50.8	76.2
2 1/2"	39.6	63.5	95.3
3"	47.5	76.2	114.3
4"	63.2	101.6	152.4

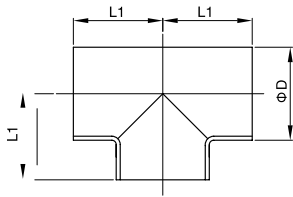


45° Long welded Elbow

Part no:BSWF04

Size	L1	D	R
1"	30.2	25.4	38.1
1 1/2"	41.3	38.1	57.2
2"	58.7	50.8	76.2
2 1/2"	76.2	63.5	95.3
3"	93.7	76.2	114.3
4"	122.2	101.6	152.4

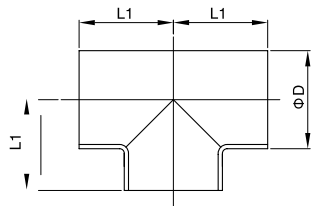
BS4825 焊接管件.BS4825 WELDED FITTING



Short welded Tee

Part no:BSWF05

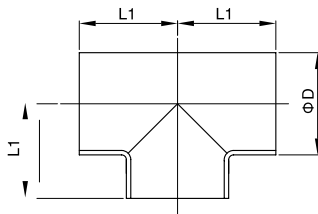
Size	L1	D
1"	43.5	25.4
1 1/2"	63.5	38.1
2"	88.5	50.8
2 1/2"	113.5	63.5
3"	133.5	76.2
4"	173.5	101.6



Long welded Tee

Part no:BSWF06

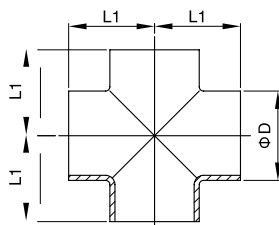
Size	L1	D
1"	65.0	25.4
1 1/2"	85.0	38.1
2"	110.0	50.8
2 1/2"	135.0	63.5
3"	155.0	76.2
4"	195.0	101.6



Long welded Tee

Part no:BSWF07

Size	L1	D
1/2"	47.6	12.7
3/4"	50.8	19.05
1"	54.0	25.4
1 1/2"	60.3	38.1
2"	73.0	50.8
2 1/2"	79.4	63.5
3"	85.7	76.2
4"	104.8	101.6



Welded Cross

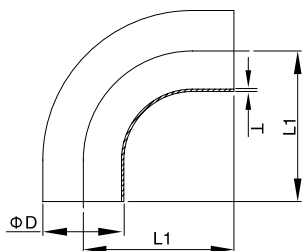
Part no:BSWF08

Size	L1	D
1"	65.0	25.4
1 1/2"	85.0	38.1
2"	110.0	50.8
2 1/2"	135.0	63.5
3"	155.0	76.2
4"	195.0	101.6

AS1528焊接管件.AS1528 WELDED FITTING

90° Long welded Elbow with straight ends

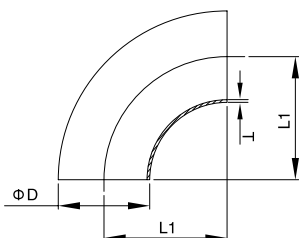
Part no:ASWF01



Size	L1	D	T
1/2"	49.1	12.7	1.6
3/4"	58.6	19.1	1.6
1"	68.1	25.4	1.6
1 1/4"	77.7	31.8	1.6
1 1/2"	87.0	38.1	1.6
2"	106.2	50.8	1.6
2 1/2"	125.0	63.5	1.6
3"	144.2	76.2	1.6
4"	182.4	101.6	2.0

90° Welded Elbow

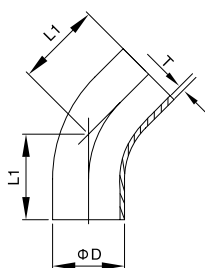
Part no:ASWF02



Size	L1	D	T
1/2"	19.1	12.7	1.6
3/4"	28.6	19.1	1.6
1"	38.1	25.4	1.6
1 1/4"	47.7	31.8	1.6
1 1/2"	57.0	38.1	1.6
2"	76.2	50.8	1.6
2 1/2"	95.0	63.5	1.6
3"	114.2	76.2	1.6
4"	152.4	101.6	2.0

45° Long welded Elbow

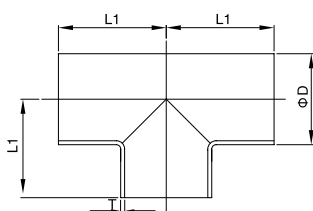
Part no:ASWF03



Size	L1	D	T
1/2"	37.9	12.7	1.6
3/4"	41.8	19.1	1.6
1"	45.8	25.4	1.6
1 1/4"	49.7	31.8	1.6
1 1/2"	53.7	38.1	1.6
2"	61.6	50.8	1.6
2 1/2"	69.5	63.5	1.6
3"	77.3	76.2	1.6
4"	92.8	101.6	2.0

Long welded Tee

Part no:ASWF04

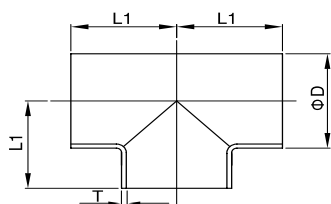


Size	L1	D	T
1/2"	49.1	12.7	1.6
3/4"	58.6	19.1	1.6
1"	68.1	25.4	1.6
1 1/4"	77.7	31.8	1.6
1 1/2"	87.0	38.1	1.6
2"	106.2	50.8	1.6
2 1/2"	125.0	63.5	1.6
3"	144.2	76.2	1.6
4"	182.4	101.6	2.0

AS1528焊接管件.AS1528 WELDED FITTING

Equal welded Tee

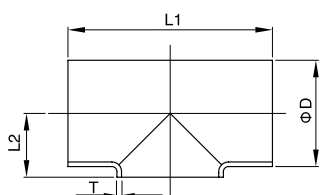
Part no:ASWF05



Size	L1	D	T
1/2"	19.1	12.7	1.6
3/4"	28.6	19.1	1.6
1"	38.1	25.4	1.6
1 1/4"	47.7	31.8	1.6
1 1/2"	57.0	38.1	1.6
2"	76.2	50.8	1.6
2 1/2"	95.0	63.5	1.6
3"	114.2	76.2	1.6
4"	152.4	101.6	2.0

Short welded Tee

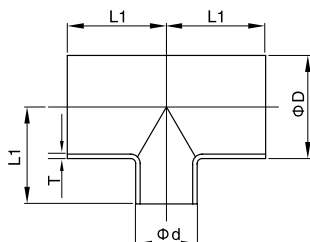
Part no:ASWF06



Size	L1	L2	D	T
1/2"	38.2	9.35	12.7	1.6
3/4"	57.2	12.55	19.1	1.6
1"	76.2	15.7	25.4	1.6
1 1/4"	95.4	18.9	31.8	1.6
1 1/2"	114.0	22.05	38.1	1.6
2"	152.4	28.4	50.8	1.6
2 1/2"	190.0	34.75	63.5	1.6
3"	228.4	41.1	76.2	1.6
4"	304.8	53.8	101.6	2.0

Reducing welded Tee

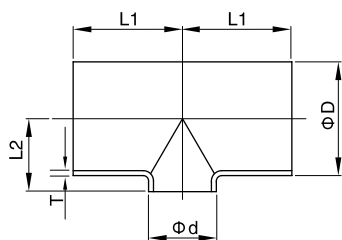
Part no:ASWF07



Size	L1	D	d	T
1 1/2" x 1"	80	38.1	25.4	1.6
2" x 1"	80	50.8	25.4	1.6
2" x 1 1/2"	80	50.8	38.1	1.6
2 1/2" x 1 1/2"	80	63.5	38.1	1.6
2 1/2" x 2"	80	63.5	50.8	1.6
3" x 1 1/2"	80	76.2	38.1	1.6
3" x 2"	80	76.2	50.8	1.6
3" x 2 1/2"	80	76.2	63.5	1.6
4" x 2"	80	101.6	50.8	1.6
4" x 2 1/2"	80	101.6	63.5	1.6
4" x 3"	80	101.6	76.2	2.0

Short reducing welded Tee

Part no:ASWF08

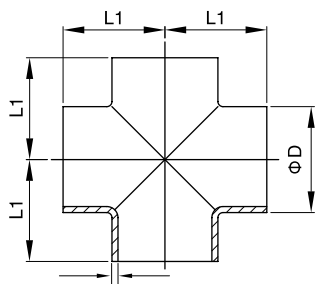


Size	L1	L2	D	d	T
1 1/2" x 1"	80	22.05	38.1	25.4	1.6
2" x 1"	80	28.4	50.8	25.4	1.6
2" x 1 1/2"	80	28.4	50.8	38.1	1.6
2 1/2" x 1 1/2"	80	34.75	63.5	38.1	1.6
2 1/2" x 2"	80	34.75	63.5	50.8	1.6
3" x 1 1/2"	80	41.1	76.2	38.1	1.6
3" x 2"	80	41.1	76.2	50.8	1.6
3" x 2 1/2"	80	41.1	76.2	63.5	1.6
4" x 2"	80	53.8	101.6	50.8	1.6
4" x 2 1/2"	80	53.8	101.6	63.5	1.6
4" x 3"	80	53.8	101.6	76.2	2.0

AS1528焊接管件.AS1528 WELDED FITTING

Long welded Cross

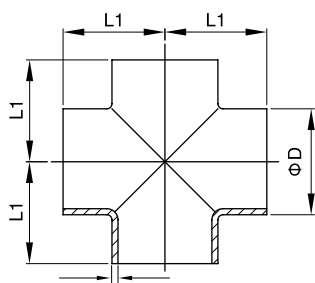
Part no:ASWF09



Size	L1	D	T
1/2"	49.1	12.7	1.6
3/4"	58.6	19.1	1.6
1"	68.1	25.4	1.6
1 1/4"	77.7	31.8	1.6
1 1/2"	87.0	38.1	1.6
2"	106.2	50.8	1.6
2 1/2"	125.0	63.5	1.6
3"	144.2	76.2	1.6
4"	182.4	101.6	2.0

Short welded Cross

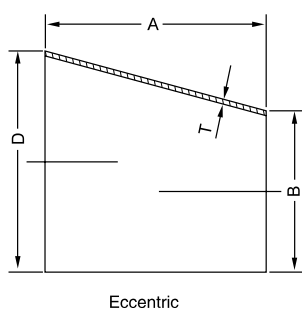
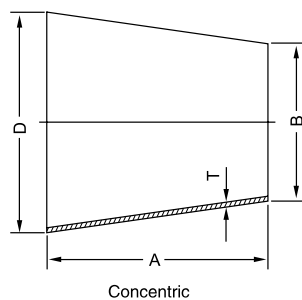
Part no:ASWF10



Size	L1	D	T
1/2"	19.1	12.7	1.6
3/4"	28.6	19.1	1.6
1"	38.1	25.4	1.6
1 1/4"	47.7	31.8	1.6
1 1/2"	57.0	38.1	1.6
2"	76.2	50.8	1.6
2 1/2"	95.0	63.5	1.6
3"	114.2	76.2	1.6
4"	152.4	101.6	2.0

Welded Reducer

Part no:ASWF11

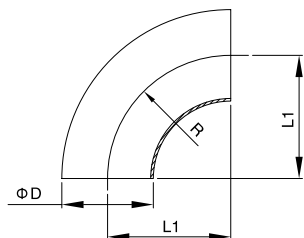


Size	A	B	D	T
3/4" x 1/2"	19.1	12.7	19.1	1.6
1" x 1/2"	25.4	12.7	25.4	1.6
1" x 3/4"	25.4	19.1	25.4	1.6
1 1/4" x 3/4"	31.8	19.1	31.8	1.6
1 1/4" x 1"	31.8	25.4	31.8	1.6
1 1/2" x 3/4"	38.1	19.1	38.1	1.6
1 1/2" x 1"	38.1	25.4	38.1	1.6
2" x 1/2"	50.8	12.7	50.8	1.6
2" x 3/4"	50.8	19.1	50.8	1.6
2" x 1"	50.8	25.4	50.8	1.6
2" x 1 1/4"	50.8	31.8	50.8	1.6
2" x 1 1/2"	50.8	38.1	50.8	1.6
2 1/2" x 1"	63.5	25.4	63.5	1.6
2 1/2" x 1 1/4"	63.5	31.8	63.5	1.6
2 1/2" x 1 1/2"	63.5	38.1	63.5	1.6
2 1/2" x 2"	63.5	50.8	63.5	1.6
3" x 1"	76.2	25.4	76.2	1.6
3" x 1 1/4"	76.2	31.8	76.2	1.6
3" x 1 1/2"	76.2	38.1	76.2	1.6
3" x 2"	76.2	50.8	76.2	1.6
3" x 2 1/2"	76.2	63.5	76.2	1.6
4" x 1"	101.6	25.4	101.6	2.0
4" x 1 1/4"	101.6	31.8	101.6	2.0
4" x 1 1/2"	101.6	38.1	101.6	2.0
4" x 2"	101.6	50.8	101.6	2.0
4" x 2 1/2"	101.6	63.5	101.6	2.0
4" x 3"	101.6	76.2	101.6	2.0

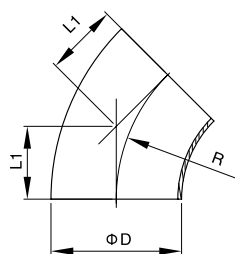
ISO/IDF 焊接管件.ISO/IDF WELDED FITTING

90° Welded Elbow

Part no:ISOWF01



Size	L1	D	R
1"	33.5	25.4	33.5
1 1/4"	38.0	32.0	38.0
1 1/2"	48.5	38.1	48.5
2"	60.5	50.8	60.5
2 1/2"	83.5	63.5	83.5
3"	88.5	76.2	88.5
3 1/2"	103.5	89.0	103.5
4"	127	101.6	127
4 1/2"	152.4	114.3	152.4
5"	190.5	133.0	190.5
6"	228.6	159.0	228.6



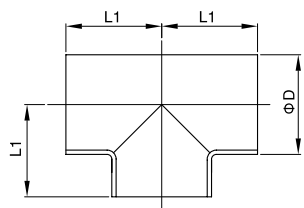
45° Welded Elbow

Part no:ISOWF02

Size	L1	D	R
1"	13.9	25.4	33.5
1 1/4"	15.7	32.0	38.0
1 1/2"	20.1	38.1	48.5
2"	25.1	50.8	60.5
2 1/2"	34.6	63.5	83.5
3"	36.7	76.2	88.5
3 1/2"	42.9	89.0	103.5
4"	52.6	101.6	119.0

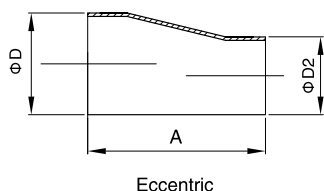
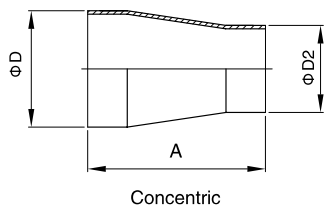
Welded Tee

Part no:ISOWF03



Size	L1	D
1"	33.5	25.4
1 1/4"	38.1	31.8
1 1/2"	48.5	38.1
2"	60.5	50.8
2 1/2"	83.5	63.5
3"	88.5	76.2
3 1/2"	103.5	88.9
4"	127	101.6
4 1/2"	152.4	114.3
5"	190.5	133.0
6"	228.6	159.0

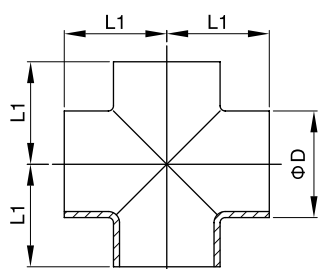
ISO/IDF 焊接管件.ISO/IDF WELDED FITTING



Welded Reducer

Part no:ISOWF04

Size	A	D	D2
1.0"/0.75"	38.0	25.4	19.05
1.25"/1.0"	50.0	31.8	25.4
1.5"/1.25"	50.0	38.1	31.8
1.5"/1.0"	50.0	38.1	25.4
2.0"/1.5"	67.0	50.8	38.1
2.0"/1.25"	67.0	50.8	31.8
2.0"/1.0"	67.0	50.8	25.4
2.5"/2.0"	67.0	63.5	50.8
2.5"/1.5"	67.0	63.5	38.1
2.5"/1.0"	67.0	63.5	25.4
3.0"/2.5"	67.0	76.2	63.5
3.0"/2.0"	67.0	76.2	50.8
3.0"/1.5"	67.0	76.2	38.1
3.5"/3.0"	67.0	88.9	76.2
3.5"/2.5"	67.0	88.9	63.5
3.5"/2.0"	67.0	88.9	50.8
4.0"/3.5"	87.0	101.6	88.9
4.0"/3.0"	87.0	101.6	76.2
4.0"/2.5"	87.0	101.6	63.5
4.0"/2.0"	87.0	101.6	50.8

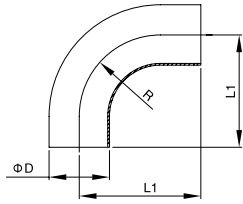


Welded Cross

Part no:ISOWF05

Size	L1	D
1"	33.5	25.4
1 1/4"	38.0	32.0
1 1/2"	48.5	38.0
2"	60.5	51.0
2 1/2"	83.5	63.5
3"	88.5	76.0
3 1/2"	103.5	89.0
4"	127	101.6

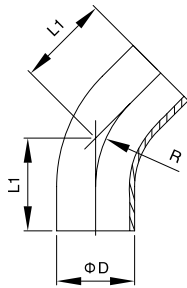
BPE 管件.BPE WELDING FITTING



BPE 90° Bend

Part no:BPE01

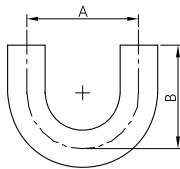
Size	L1	D	R
1/2"	76.2	12.7	19.1
3/4"	76.2	19.05	28.6
1"	76.2	25.4	38.1
1 1/2"	95.3	38.1	57.2
2"	120.7	50.8	76.2
2 1/2"	139.7	63.5	95.3
3"	158.8	76.2	114.3
4"	203.2	101.6	152.4



BPE 45° Bend

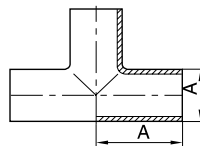
Part no:BPE02

Size	L1	D	R
1/2"	57.2	12.7	19.1
3/4"	57.2	19.05	28.6
1"	57.2	25.4	38.1
1 1/2"	63.5	38.1	57.2
2"	76.2	50.8	76.2
2 1/2"	85.7	63.5	95.3
3"	92.1	76.2	114.3
4"	114.3	101.6	152.4

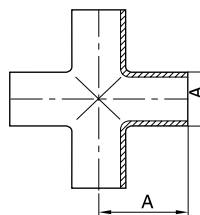


BPE 180° Bend Part no:BPE03

Nominal Size in.	A		B	
	in.	mm	in.	mm
1/4"	4.500	114.3	2.625	66.7
3/8"	4.500	114.3	2.625	66.7
1/2"	4.500	114.3	3.000	76.2
3/4"	4.500	114.3	3.000	76.2
1"	3.000	76.2	3.000	76.2
1 1/2"	4.500	114.3	4.500	114.3
2"	6.000	152.4	5.000	127.0
2 1/2"	7.500	190.5	5.750	146.1
3"	9.000	228.6	6.500	165.1
4"	12.000	304.8	8.500	215.9
6"	18.000	457.2	11.500	292.1



Part no:BPE04

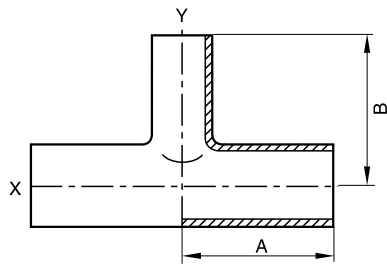


Part no:BPE05

BPE TEE&CROSS

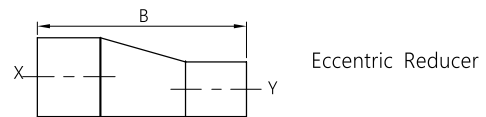
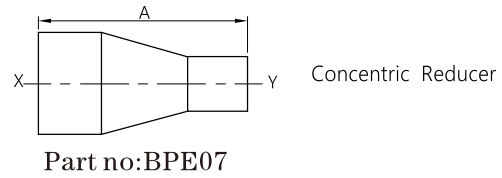
Nominal Size in.	A	
	in.	mm
1/4	1.750	44.5
3/8	1.750	44.5
1/2	1.875	47.6
3/4	2.000	50.8
1	2.125	54.0
1 1/2	2.375	60.3
2	2.875	73.0
2 1/2	3.125	79.4
3	3.375	85.7
4	4.125	104.8
6	5.625	142.9

BPE管件.BPE WELDING FITTING



BPE Welded Reducing Tee Part no:BPE06

Nominal Size,in.		A		B	
X	Y	in.	mm	in.	mm
3/8	1/4	1.750	44.5	1.750	44.5
1/2	1/4	1.875	47.5	1.875	47.6
1/2	3/8	1.875	47.6	1.875	47.6
3/4	1/4	2.000	50.8	2.000	50.8
3/4	3/8	2.000	50.8	2.000	50.8
3/4	1/2	2.000	50.8	2.000	50.8
1	1/4	2.125	54.0	2.125	54.0
1	3/8	2.125	54.0	2.125	54.0
1	1/2	2.125	54.0	2.125	54.0
1	3/4	2.125	54.0	2.125	54.0
1 1/2	1/2	2.375	60.3	2.375	60.3
1 1/2	3/4	2.375	60.3	2.375	60.3
1 1/2	1	2.375	60.3	2.375	60.3
2	1/2	2.875	73.0	2.625	66.7
2	3/4	2.875	73.0	2.625	66.7
2	1	2.875	73.0	2.625	66.7
2	1 1/2	2.875	73.0	2.625	66.7
2 1/2	1/2	3.125	79.4	2.875	73.0
2 1/2	3/4	3.125	79.4	2.875	73.0
2 1/2	1	3.125	79.4	2.875	73.0
2 1/2	1 1/2	3.125	79.4	2.875	73.0
2 1/2	2	3.125	79.4	2.875	73.0
3	1/2	3.375	85.7	3.125	79.4
3	3/4	3.375	85.7	3.125	79.4
3	1	3.375	85.7	3.125	79.4
3	1 1/2	3.375	85.7	3.125	79.4
3	2	3.375	85.7	3.125	79.4
3	2 1/2	3.375	85.7	3.125	79.4
4	1/2	4.125	104.8	3.625	92.1
4	3/4	4.125	104.8	3.625	92.1
4	1	4.125	104.8	3.625	92.1
4	1 1/2	4.125	104.8	3.625	92.1
4	2	4.125	104.8	3.875	98.4
4	2 1/2	4.125	104.8	3.875	98.4
4	3	4.125	104.8	3.875	98.4
6	3	5.625	142.9	4.875	123.8
6	4	5.625	142.9	5.125	130.2



Nominal Size,in.		A		B	
X	Y	in.	mm	in.	mm
3/8	1/4	3.250	82.6	4.000	101.6
1/2	1/4	3.250	82.6	4.000	101.6
1/2	3/8	3.250	82.6	4.000	101.6
3/4	1/4	3.250	82.6	4.000	101.6
3/4	3/8	3.250	82.6	4.000	101.6
3/4	1/2	4.000	101.6	4.000	101.6
1	1/4	4.500	114.3	4.500	114.3
1	3/8	4.500	114.3	4.500	114.3
1	1/2	4.500	114.3	4.500	114.3
1	3/4	4.000	101.6	4.000	101.6
1 1/2	1/2	5.500	139.7	5.500	139.7
1 1/2	3/4	5.000	127.0	5.000	127.0
1 1/2	1	5.000	127.0	5.000	127.0
2	1/2	7.750	196.9	7.750	196.9
2	3/4	7.250	184.2	7.250	184.2
2	1	7.250	184.2	7.250	184.2
2	1 1/2	5.250	133.4	5.250	133.4
2 1/2	1/2	9.750	247.7	9.750	247.7
2 1/2	3/4	9.250	235.0	9.250	235.0
2 1/2	1	9.250	235.0	9.250	235.0
2 1/2	1 1/2	7.250	184.2	7.250	184.2
2 1/2	2	5.500	139.7	5.500	139.7
3	1	11.250	285.8	11.250	285.8
3	1 1/2	9.250	235.0	9.250	235.0
3	2	7.500	190.5	7.500	190.5
3	2 1/2	5.500	139.7	5.500	139.7
4	1	15.500	393.7	15.500	393.7
4	1 1/2	13.500	342.9	13.500	342.9
4	2	11.750	298.5	11.750	298.5
4	2 1/2	9.750	247.7	9.750	247.7
4	3	7.750	196.9	7.750	196.9
6	3	10.000	254.0	9.750	247.7
6	4	10.000	254.0	10.000	254.0