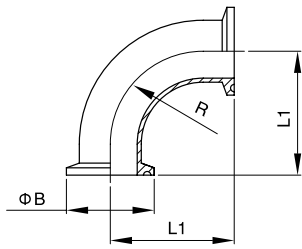


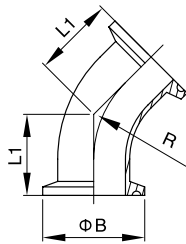
卡箍管件.CLAMPED FITTING



90° clamped Elbow

Part no:CF01

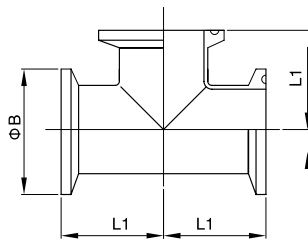
Size	L1	B	R
1"	50.8	50.5	38.1
1 1/2"	69.9	50.5	57.2
2"	88.9	64.0	76.2
2 1/2"	108.0	77.5	95.3
3"	127.0	91.0	114.3
4"	168.2	119.0	152.4
6"	250.8	167	228.6



45° clamped Elbow

Part no:CF02

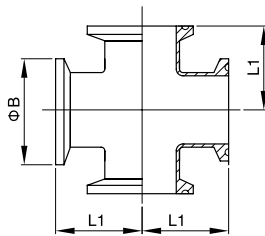
Size	L1	B	R
1"	28.5	50.5	38.1
1 1/2"	36.5	50.5	57.2
2"	44.5	64.0	76.2
2 1/2"	52.3	77.5	95.3
3"	60.3	91.0	114.3
4"	76.2	119.0	152.4



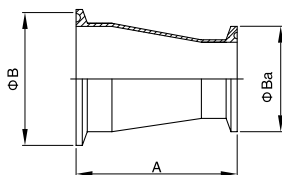
Part no:CF03

Clamped Tee
Clamped Cross

Size	L1	B
1"	60.3	50.5
1 1/2"	69.9	50.5
2"	88.9	64.0
2 1/2"	88.9	77.5
3"	95.3	91.0
4"	114.2	119.0



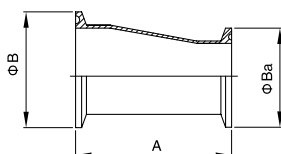
Part no:CF04



Concentric Part no:CF05

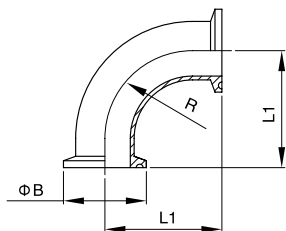
Clamped Reducer

Size	A	B	Ba
1.5"/1.0"	76.2	50.5	50.5
2.0"/1.0"	127.0	64.0	50.5
2.0"/1.5"	76.2	64.0	50.5
2.5"/1.5"	127.0	77.5	50.5
2.5"/2.0"	76.2	77.5	64.0
3.0"/1.5"	177.8	91.0	50.5
3.0"/2.0"	127.0	91.0	64.0
3.0"/2.5"	76.2	91.0	77.5
4.0"/2.0"	231.8	119.0	64.0
4.0"/2.5"	181.0	119.0	77.5
4.0"/3.0"	130.2	119.0	91.0



Eccentric Part no:CF06

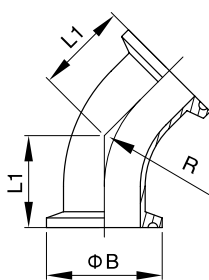
DIN 卡箍管件.DIN CLAMP FITTING



DIN clamped bend 90°

Part no:CF07

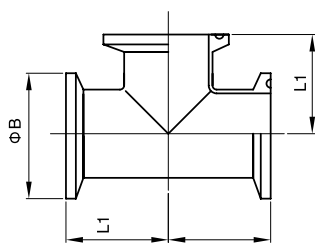
Size	L1	R	B
DN15	53.0	34.0	35.0
DN20	58.0	34.0	40.0
DN25	71.0	50.5	50.0
DN32	76.5	50.5	55.0
DN40	81.5	50.5	60.0
DN50	91.5	64.0	70.0
DN65	108.0	91.0	80.0
DN80	118.0	106.0	90.0
DN100	128.0	119.0	100.0



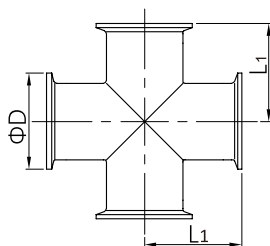
DIN clamped bend 45°

Part no:CF08

Size	L1	B	R
DN20	34.5	34.0	40.0
DN25	42.2	50.5	50.0
DN32	44.3	50.5	55.0
DN40	46.3	50.5	60.0
DN50	50.5	64.0	70.0
DN65	61.2	91.0	80.0
DN80	65.3	106.0	90.0
DN100	69.5	119.0	100.0



Part no:CF09

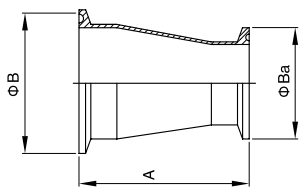


Part no:CF10

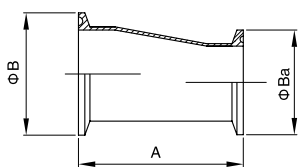
DIN clamped TEE&Cross

Size	L1	B
DN15	53.0	34.0
DN20	58.0	34.0
DN25	71.5	50.5
DN32	76.5	50.5
DN40	81.5	50.5
DN50	91.5	64.0
DN65	108.0	91.0
DN80	118.0	106.0
DN100	128.0	119.0
DN125	225	144.5
DN150	263	167

DIN卡箍管件.DIN CLAMP FITTING



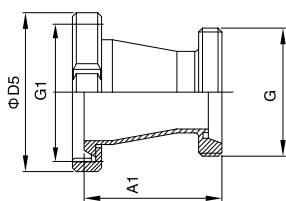
Concentric
Part no:CF11



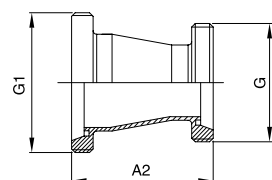
Eccentric
Part no:CF12

Clamped Reducer

Size	A	B	Ba
DN20/15	86.0	34.0	34.0
DN25/20	86.0	50.5	34.0
DN32/20	106.0	50.5	34.0
DN32/25	106.0	50.5	50.5
DN40/20	128.0	50.5	34.0
DN40/25	128.0	50.5	50.5
DN40/32	128.0	50.5	50.5
DN50/25	141.0	64.0	50.5
DN50/32	141.0	64.0	50.5
DN50/40	141.0	64.0	50.5
DN65/25	151.0	91.0	50.5
DN65/32	151.0	91.0	50.5
DN65/40	146.0	91.0	50.5
DN65/50	146.0	91.0	64.0
DN80/40	166.0	106.0	50.5
DN80/50	151.0	106.0	64.0
DN80/65	146.0	106.0	91.0
DN100/50	192.0	119.0	64.0
DN100/65	159.0	119.0	91.0
DN100/80	152.0	119.0	106.0



Threaded/nut
Part no:CF13



Threaded
Part no:CF14

Union-type Reducer

Size	A1	G	D5	A2	G1
DN20/15	93.0	RD34×1/8	54.0	98.0	RD44×1/6
DN25/20	97.0	RD44×1/6	62.0	101.0	RD52×1/6
DN32/20	117.0	RD44×1/6	68.0	121.0	RD58×1/6
DN32/25	118.0	RD52×1/6	68.0	122.0	RD58×1/6
DN40/20	139.0	RD44×1/6	78.0	143.0	RD65×1/6
DN40/25	140.0	RD52×1/6	78.0	144.0	RD65×1/6
DN40/32	140.0	RD58×1/6	78.0	144.0	RD65×1/6
DN50/25	153.0	RD52×1/6	92.0	157.0	RD78×1/6
DN50/32	153.0	RD58×1/6	92.0	157.0	RD78×1/6
DN50/40	153.0	RD65×1/6	92.0	157.0	RD78×1/6
DN65/25	163.0	RD52×1/6	110.0	169.0	RD95×1/6
DN65/32	163.0	RD58×1/6	110.0	169.0	RD95×1/6
DN65/40	158.0	RD65×1/6	110.0	164.0	RD95×1/6
DN65/50	158.0	RD78×1/6	110.0	164.0	RD95×1/6
DN80/40	181.0	RD65×1/6	126.0	187.0	RD110×1/4
DN80/50	166.0	RD78×1/6	126.0	172.0	RD110×1/4
DN80/65	183.0	RD95×1/6	126.0	174.0	RD110×1/4
DN100/50	195.0	RD78×1/6	146.0	209.0	RD130×1/4
DN100/65	174.0	RD95×1/6	146.0	178.0	RD130×1/4
DN100/80	170.0	RD110×1/4	146.0	174.0	RD130×1/4