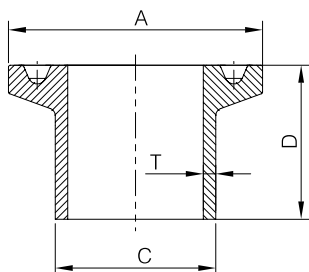


# 卡箍接头.CLAMP FERRULE

## DIN Clamp Ferrule

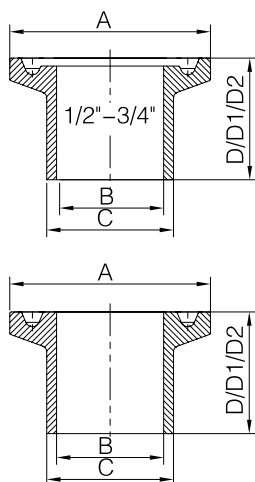
Part no:CF15



Size	A	C	D	T
DN15	34.0	18.0	18.0	1.5
DN20	34.0	22.0	18.0	1.5
DN25	50.5	28.0	21.5	1.5
DN32	50.5	34.0	21.5	1.5
DN40	50.5	40.0	21.5	1.5
DN50	64.0	52.0	21.5	1.5
DN65	91.0	70.0	28.0	2.0
DN80	106.0	85.0	28.0	2.0
DN100	119.0	104.0	28.0	2.0
DN125	145.0	129.0	28.0	2.0
DN150	167.0	154.0	28.0	2.0

## Tri-clamp Ferrule Part no:CF16

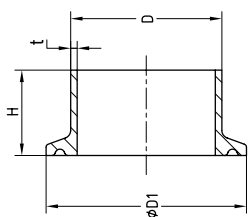
3A-14WMP/14MMP/14AMP



Size	A	B	C	D	D1	D2
1/2"	25.2	9.4	12.7	12.7	21.5	28.6
3/4"	25.2	15.75	19.05	12.7	21.5	28.6
1"	50.5	22.1	25.4	12.7	21.5	28.6
1 1/4"	50.5	28.5	31.8	12.7	21.5	28.6
1 1/2"	50.5	34.8	38.1	12.7	21.5	28.6
2"	64.0	47.5	50.8	12.7	21.5	28.6
2 1/2"	77.5	60.2	63.5	12.7	21.5	28.6
3"	91.0	72.9	76.2	12.7	21.5	28.6
4"	119.0	97.4	101.6	15.9	21.5	28.6
6"	166.8	146.8	152.4	22.2	21.5	38.1
8"	217.7	197.6	203.2	22.2	21.5	38.1
10"	268.5	248.4	254	22.2	21.5	38.1
12"	319.3	299.2	304.8	22.2	21.5	38.1

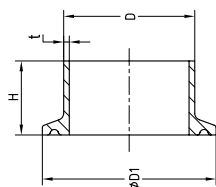
## BS Ferrule SCH5/SCH 10

Part no:CF17



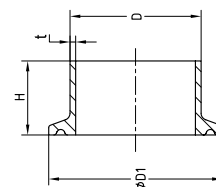
Size	D	D1	H	t(sch5)	t(sch10)
1/2"	21.34	50.5	21.5	1.65	2.11
3/4"	26.67	50.5	21.5	1.65	2.11
1"	33.4	50.5	21.5	1.65	2.77
1 1/4"	42.16	64	21.5	1.65	2.77
1 1/2"	48.26	64	21.5	1.65	2.77
2"	60.33	77.5	21.5	1.65	2.77
2 1/2"	73.03	91	21.5	2.11	3.18
3"	88.9	106	21.5	2.11	3.18
3 1/2"	101.6	119	21.5	2.11	3.18
4"	114.3	130	28	2.11	3.18
5"	141.3	155	28	2.11	3.40
6"	168.28	183	28	2.11	3.40
8"	219.09	233.5	28	2.11	3.76
10"	273.05	286	28	2.11	4.10

# 卡箍接头.CLAMP FERRULE



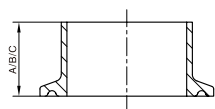
ISO/IDF Ferrule  
Part no:CF18

Size	D	D1	H	t
1/2"	12.7	25.4	21.5	1.5/1.0
3/4"	19.1	25.4	21.5	1.5/1.0
1"	25.4	50.5	21.5	1.5/1.2
1 1/4"	31.8	50.5	21.5	1.5/1.2
1 1/2"	38.1	50.5	21.5	1.5/1.2
45	45	64	21.5	1.5
2"	50.8	64	21.5	1.5
57	57	77.5	21.5	2.0
2 1/2"	63.5	77.5	21.5	2.0
3"	76.2	91	21.5	2.0
3 1/2"	89	106	21.5	2.0
4"	101.6	119	21.5	2.0
108	108	119/130	21.5	2.0
114.3	114.3	130	21.5	2.0
133	133	155	28	2.0
159	159	183	28	3.0
204	204	217.4	28	2.0
219	219	233.5	28	3.0
254	254	268	28	2.0
304	304	319	28	2.0



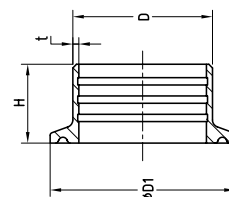
ISO1127 Ferrule  
Part no:CF19

Size	D	D1	H	t
21.3	21.3	50.5	21.5	1.6
26.9	26.6	50.5	21.5	1.6
33.7	33.7	50.5	21.5	2.0
42.4	42.4	64	21.5	2.0
48.3	48.3	64	21.5	2.0
60.3	60.3	77.5	21.5	2.0
76.2	76.1	91	21.5	2.0
88.9	88.9	106	28	2.0
114.3	114.3	130	28	2.0
139.7	139.7	155	28.0	2.0
168.3	168.3	183	28.0	3.6
219.1	219.1	233.5	28.0	3.6



BPE Ferrule  
Part no:CF20

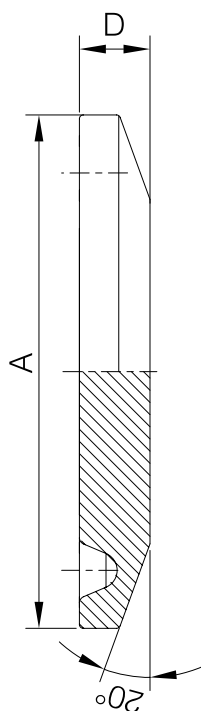
Size	A		B		C	
	In.	mm	in.	mm	in.	mm
1/4"	1.750	44.5	1.130	28.7	0.500	12.7
3/8"	1.750	44.5	1.130	28.7	0.500	12.7
1/2"	1.750	44.5	1.130	28.7	0.500	12.7
3/4"	1.750	44.5	1.130	28.7	0.500	12.7
1"	1.750	44.5	1.130	28.7	0.500	12.7
1 1/2"	1.750	44.5	1.130	28.7	0.500	12.7
2"	2.250	57.2	1.130	28.7	0.500	12.7
2 1/2"	2.250	57.2	1.130	28.7	0.500	12.7
3"	2.250	57.2	1.130	28.7	0.500	12.7
4"	2.250	57.2	1.130	28.7	0.625	15.9
6"	3.000	76.2	1.500	38.1	0.750	19.1



Expanding Ferrule  
Part no:CF21

Size	D	D1	H
1"	29.5	50.5	19.1
1 1/2"	42.5	50.5	28.6
2"	55.7	64	33.3
2 1/2"	68.8	77.5	34.9
3"	82	91	36.5
4"	108	119	38.1

# 卡箍接头.CLAMP FERRULE



DIN Blank

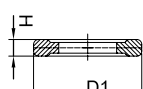
Part no:CF22

Size	A	D
DN15	34.0	5.0
DN20	34.0	5.0
DN25	50.5	6.3
DN32	50.5	6.3
DN40	50.5	6.3
DN50	64.0	6.3
DN65	91.0	6.3
DN80	106.0	6.4
DN100	119.0	7.9
DN125	145.0	10.5
DN150	167.0	10.5

16A Solid end cap

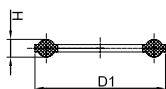
Part no:CF23

Size	A	D
1/2"-3/4"	25.2	5.0
A37	34.0	6.3
1-1.5"	50.5	6.3
2"	64.0	6.3
2.5"	77.5	6.3
3"	91.0	6.3
4"	119.0	7.9
6"	166.8	11.1
8"	217.7	11.1
10"	268.5	11.1
12"	319.3	11.1



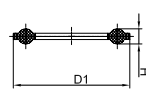
Tri-clamp Plain gasket  
Part no:CF24

Size	D1	H
1/2"	20.3	5
3/4"	20.3	5
1"	50.5	5
1 1/2"	50.5	5
2"	64	5.5
2 1/2"	77.5	5.5
3"	91	5.5
3 1/2"	106	5.5
4"	119	5.5
4 1/2"	130	5.5
5"	144.5	5.5
φ 133	155	5.5
6"	167	5.5
φ 159	183	5.5
8"	217.4	5.5
φ 219	233.5	5.5
10"	268	5.5
12"	319	5.5



DIN Tri-clamp gasket  
Part no:CF25

Size	D1	H
DN10	34	5
DN15	34	5
DN20	34	5
DN25	50.5	5
DN32	50.5	5
DN40	50.5	5
DN50	64	5.5
DN65	91	5.5
DN80	106	5.5
DN100	119	5.5
DN125	144.5	5.5
DN150	167	5.5
DN150	183	5.5
DN200	217.4	5.5
DN250	233.5	5.5
DN250	268	5.5
DN300	319	5.5



Lipped gasket 13PG  
Part no:CF26

Size	A	B
1.0"	22.8	52.7
1.5"	35.8	52.7
2.0"	48.8	66.2
2.5"	60.5	79.7
3.0"	73.1	93.2
4.0"	97.8	121.2
6.0"	148	169.1
10"	249	270.7
12"	300	321.5



EPDM, Silicone, NBR, PTFE, Viton, Nirtle



seal with screen(60-200mesh)