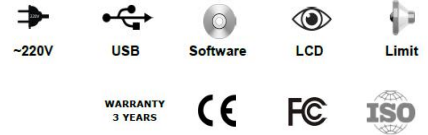


## Uee Series - Ultrasonic Flaw Detector Uee952/953



## Functions & Features

- IP65 standard, with the durable metal shell (oil-proof, water-proof and dust-proof)
- PC software is available for data analysis, management and reports printing
- Probe automatic calibration
- DAC and AVG are automatically formed, and can be corrected and compensated
- Freely switch to four kinds of standards (depth D, level P, distance S, amplitude H)
- Functions such as Auto-gain and peak memory improve detection efficiency
- Automatically calculate the  $\phi$  value equivalent defects
- 13 built-in testing standards are available
- Storage: 500-1000 pieces of A-scan images and data
- Power supply: rechargeable Li-ion battery, standby time more than 15hours
- The width and intensity of launch pulse are adjustable
- AWS standards are available
- With measuring video function
- 3 years warranty and life-long services.

## Application

Rometec srl - [www.rometec.it](http://www.rometec.it) - Rometec srl - [www.rometec.it](http://www.rometec.it) - Rometec srl - [www.rometec.it](http://www.rometec.it)

- Application for quickly and accurately detection, positioning, evaluation and diagnosis of various flaws in the work-piece, such as cracks, welds, blowhole, etc. It Widely used in electric power, petrochemical, boiler and pressure vessel, steel, military, aerospace, railway transportation, automobiles, machinery, and other fields.

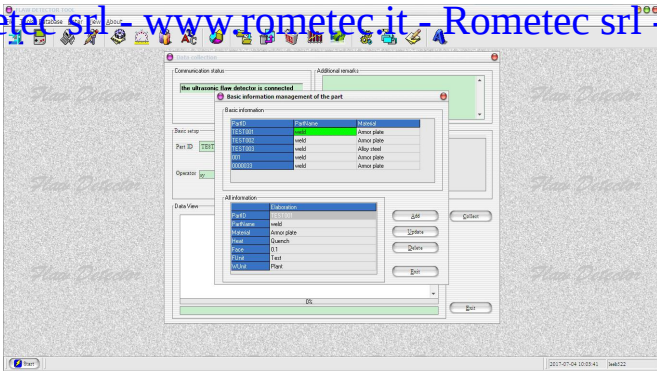
## Technical Parameters

Model	Uee952	Ueeb953
Operating Frequency	0.5MHz~20MHz	
Scan Range(mm)	0-6000mm	0-10000mm
Velocity Range (m/s)	1000~15000	100~20000
Vertical linearity error	≤3%	≤2%
Dynamic Range	≥32dB	≥35dB
Horizontal linearity error	≤0.2%	≤0.1%
Testing sensitivity	≥62dB (Depth 200mm, Φ2 flat bottom hole)	≥65dB (Depth 200mm, Φ2 flat bottom hole)
Measuring channel	100	500
Storage	500	1000
TCG curve	○	●
B Scan	○	●
PC Connection	●	
Video	○	●
Gain Range(dB)	0~110	0~130
AWS	○	●
Standard Probes	Straight probe: 2.5MHz, diameter 20mm, cable Q9-Q9 Angle probe: 4MHz, 60 degree, 8*9 mm, cable Q9-C5	
Dimension	240×185×55mm	
Weight	1.85kg	
Optional Accessories	Optional probes, Cables, Calibration blocks, Coupling agent	

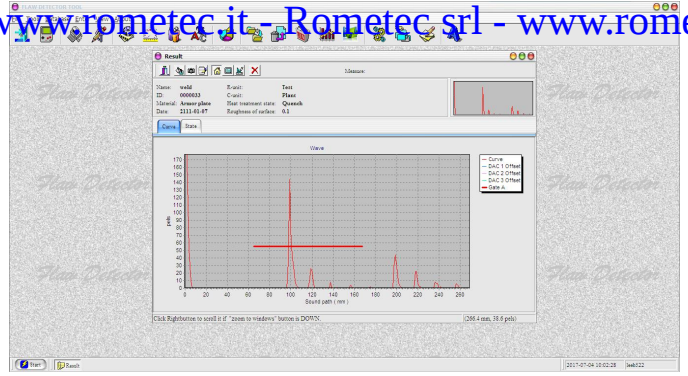
## Pictures



Rometec srl - [www.rometec.it](http://www.rometec.it) - Rometec srl - [www.rometec.it](http://www.rometec.it) - Rometec srl - [www.rometec.it](http://www.rometec.it)



Data Management



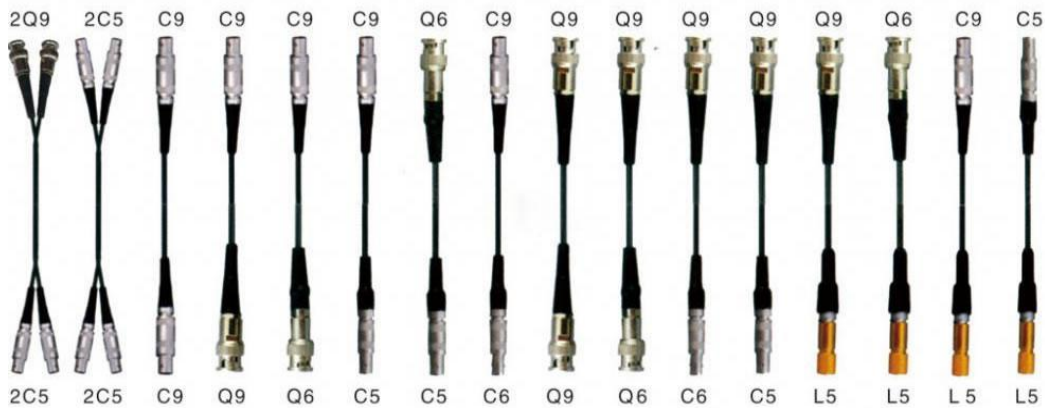
Measuring Display

## Standard Configuration

Name	Quantity	Name	Quantity
Main unit	1	PC software	1
Straight probe	1	USB	1
Angle probe	1	Manual	1
Power adapter	1	Certificate	1
Cables	2	Warranty card	1

## Accessories

Different Cables for Probes



Standard Probes

