



Rometec s.r.l.

Via Alessandro Minuziano, 87-89 , 00128 Roma

Tel. 065061635 – Fax 065061542

Sito web: www.rometec.it – email: info@rometec.it

P. IVA 04120621000 - CCIAA RM 736916

Reg. Soc. Tribunale RM 9229/91 - Cap. soc. 46'482,00 €



CATALOGO

Valvole pinch a manicotto



Rubberlinings / hose inserts part 3 for Hose Diaphragm Valves

- with handwheel – type sheet 100.101 -
- with pneumatic actuators – type sheets 1200.1201 and 1200
- with electric actuators – type sheets 1200.1203, 1200.1204
- for hose pinch float valves – type sheet 500.501
- for hose pinch float safety valves – type sheet 800.801

available in varying materials and qualities:

natural rubber NR 5153 black	/ max. + 80° C
- standard – also abrasion resistant –	
natural rubber NR 526black3	/ max. + 90° C
Naturkautschuk lebensmittelbeständig NR 5055 hell – auch nach FDA	/ max. + 70° C
Perbunan NBR 5960	/ max. + 70° C
Neoprene CR 4860	/ max. + 70° C
EPDM 5562	/ max. + 90° C
Hypalon CSM 5664	/ max. + 70° C
Butyl IIR 5560	/ max. + 70° C
Naturkautschuk mit PTFE-Folie	/ max. + 90° C.

Temperature data refer to water.

We like to offer special qualities on demand.

The resistance of the materials above is depending on the concentration and temperature as well as on the operation pressure of the process media.

Threaded parts vulcanized into rubberlinings building the bolt connections to the control spindle of the armature on one side and on the other to the valve body.

With it a controlled operation is made so that the rubber linings - also with sticky media and media tending to incrustation - always open faultlessly.

By the squeezing operation unwanted deposits will be detached and flowing off.

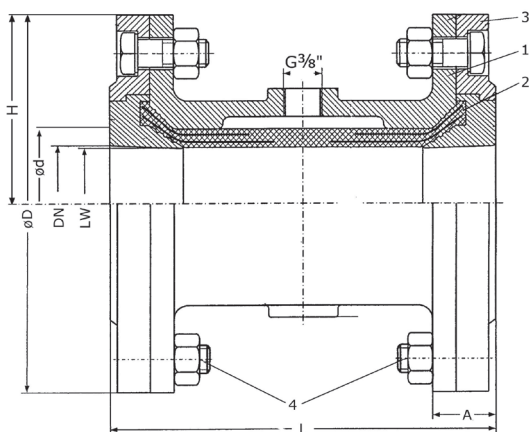
These high class lining parts are mould parts which are produced in steel moulds due to decades of experience. Fabric linings in polyamide fabric are integrated onesided on the upper side to reinforce the rubber lining and are vulcanized.

The close cooperation with our rubber laboratory and available resistiveness lists aim to determine the most resistive rubber composite and quality for specific needs and case of operation.

The rubber lining is only in contact with the process medium.

After the replacement of this spare part, to which there is a mounting instruction available - see product selection "technical Documentation" - our customers have again a armature as good as new.





DN 40 - 100
Fig. 103

DN	LW	L	ØD	Ød	H	A	B')	length hose insert	vol/ l ²⁾	weight approx. kgs	
										GG	Alu
40	38	155	150	55	75	26	-	137	0,2	5,6	2,8
50	45	165	165	67	83	27	-	144	0,4	7,1	3,5
65	60	185	185	84	93	31	-	162	0,7	10,0	4,5
80	75	225	200	103	100	32	-	202	1,4	13,0	6,5
100	95	280	220	127	110	34	222	257	3,0	19,2	8,5

dimensions in mm

¹⁾ max. width (not drawn)

²⁾ appr. control space volume in litres (l) with valve being closed

Range of application: pulverous and abrasive products (like e.g. cement, lime, gypsum, dust etc.) granulate, sand, loam, pastes, ore-sludge and coal-silt, polluted liquids, sludges, waste water, feeding-stuff, syrup, juices, mash, air, water, aggressive media, pneumatic conveyor systems.

Construction: directly actuated, with changeable hose insert with cylindrical and smooth passage, body with polyester powder coating.

Materials: see table (other materials on demand).

Operating pressure: max. 6 bar

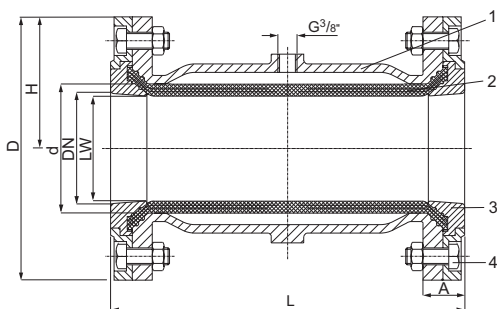
Control pressure: appr. 2,0 bar superior to operating pressure; control pressure max. 8 bar.

Control media: compressed air, pressure water or neutral gases.

Flange connection: DIN 2501, PN 16, DIN 2533 / EN 1092-2, PN 16

Special constructions: body in stainless steel or plastic, cone flanges with boxes in polypropylene (PP), cone flanges with boxes in stainless steel 1.4301 or 1.4571, cone flanges with boxes in ceramics / resistant to abrasion, hose inserts in NBR, CR, FPM, CSM, EPDM, foodstuff natural rubber NR white; with 3/2-way-solenoid valves for electr./pneumatic actuating, with pressure switching and other accessories, example circuits for pinch valves on demand.

part	designation	material
1	body	GG 25/light metal/ plastic (PP) DN 40 + 50
2	hose insert	NR
3	cone flange	GG 25/light metal/ plastic (PP) DN 40 + 50
4	bolts/nuts	zinc-coated steel



DN 125-300
Fig. 103

DN	LW	L	ØD	Ød	H	A	B ¹⁾	length hose insert	Vol/ l ²⁾	weight approx. kgs	
										GG	Alu
125	120	350	250	157	125	43	278	323	4,5	27,0	14,2
150	145	420	285	185	143	47	330	393	6,5	43,3	21,1
200	190	560	340	239	170	54	420	529	16,0	78,0	34,4
250	229	680	405	306	198	82	508	640	37,0	88,0	-
300	278	820	460	362	223	98	600	764	67,0	147,0	-

dimensions in mm

¹⁾ max. width (not drawn)

²⁾ appr. control space volume in litres (l) with valve being closed

Range of application: pulverous and abrasive products (like e.g. cement, lime, gypsum, dust etc.) granulate, sand, loam, pastes, ore-sludge and coal-silt, polluted liquids, sludges, waste water, feeding-stuffs, syrup, juices, mash, air, water, aggressive media, pneumatic conveyor systems, filling-safety on bulk tanks.

Construction: directly actuated, with changeable hose insert with cylindrical and smooth passage, body with polyester powder coating (DN 125 - 200).

Materials: see table (other materials on demand).

Operating pressure: max. 4 bar (6 bar on demand) DN 125-200
max. 3 bar (4 bar on demand) DN 250 + DN 300

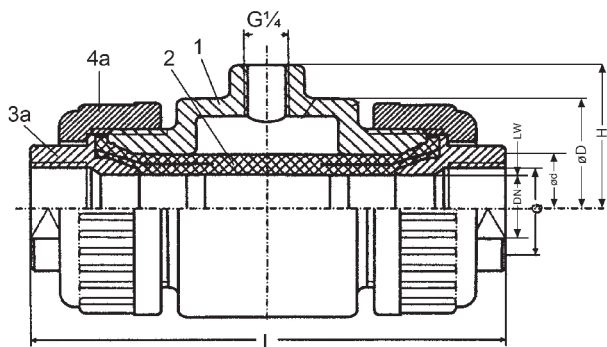
Control pressure: appr. 2,0 bar superior to operating pressure;
max. operating pressure 6 bar;

Control media: compressed air, pressure water or neutral gases.

Flange connection: DIN 2501, PN 16, DIN 2533 / EN 1092-2, PN 16
DN 200 + DN 250 = DIN 2501, PN 10,
DIN 2532 / EN 1092-2, PN 10

Special constructions: body stainless steel,
cone flanges with boxes in plastic (PP),
cone flanges with boxes in stainless steel 1.4301 or 1.4571,
cone flanges with boxes in ceramics / resistant to abrasion
hose inserts in NBR, CR, FPM, CSM, EPDM,
foodstuff natural rubber NR white;
with 3/2-way-solenoid valves for electr./pneumatic actuating
with pressure switching and other accessories,
example circuits for pinch valves on demand.

part	designation	material
1	body	GG 25 or light metal
2	hose insert	NR
3	cone flanges	GG 25 or light metal
4	bolts/nuts	zinc-coated steel



DN 15-32
Fig. 103 A



DN	G	LW	L	ØD	Ød	H	length hose insert	vol/ l ¹⁾	weight approx. kgs	
									GG	PP
15	1/2"	15	140	66	33	42	101	0,1	1,1	0,4
20	3/4"	20	140	66	33	42	101	0,1	1,1	0,4
25	1"	25	158	79	37	50	110	0,1	2,0	0,5
32	1 1/4"	32	164	87	46	54	115	0,2	2,3	0,6

dimensions in mm

¹⁾ appr. control space volume in litres (l) with valve being closed

Range of application:

powdery products and abrasive media (like e.g. cement, lime, gypsum etc.), granulates, sand, loam, clay, pastes, ore-sludge and coal-silt, solids-bearing fluids, sludges, waste water, feeding-stuff, syrup, juices, mash, air, water, aggressive media, pneumatic conveyor systems.

Construction:

directly actuated, with changeable hose insert with cylindrical and smooth passage, body in GG25 with polyester powder coating.

Materials:

see table (other materials on demand).

Operating pressure:

max. 6 bar

Control pressure:

appr. 2,0 bar superior to operating pressure; control pressure max. 8 bar.

Control media:

compressed air, pressure water or neutral gases.

Connection:

internal thread on both sides
ISO 228/DIN259

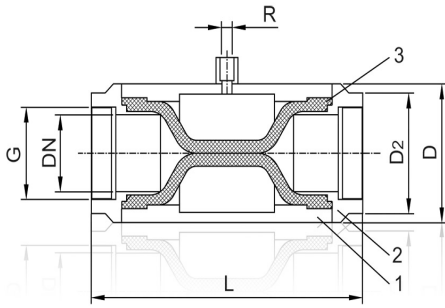
Special constructions:

body in stainless steel,
cone pieces in plastic (PP),
cone pieces in stainless steel 1.4301 or 1.4571,
cone pieces in ceramics / resistant to abrasion,
hose inserts in NBR, CR, FPM, CSM, EPDM,
foodstuff natural rubber NR white;
with 3/2-way-solenoid valves for electr./pneumatic actuating,
with pressure switching and other accessories,
example circuits for pinch valves on demand.

part	designation	material
1	body	GG 25 or plastic
2	hose insert	NR
3a	cone pieces	steel ¹⁾ or plastic
4a	union nut	PP

¹⁾ for DN 20 = alu (GAL Si 12)

Filettato BSPP-F, max 4 bar.



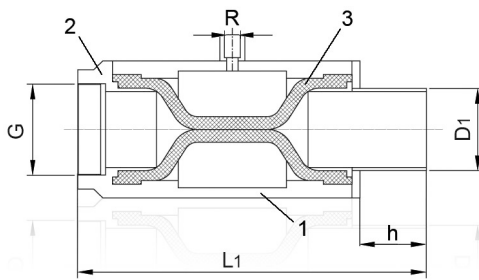
DN	G	L	ØD	D ₂	R	weight approx. kgs
15	½"	120	40	35	½"	0,3
20	¾"	130	50	40	½"	0,4
25	1"	130	60	46	½"	0,6
32	1¼"	165	70	60	½"	0,7
40	1½"	197	80	70	½"	3,0
50	2"	207	90	80	¼"	3,9
65	2½"	240	110	100	¼"	5,0
80	3"	290	140	125	¼"	7,0
100	4"	336	160	-	¼"	10,0

dimensions in mm

part	designation	material
1	body	light metal
2	cone pieces	light metal
3	hose insert	NR

Modello 100.103/1 C

Filettato BSPP-F da un lato e tubo liscio dall'altro, max 4 bar.



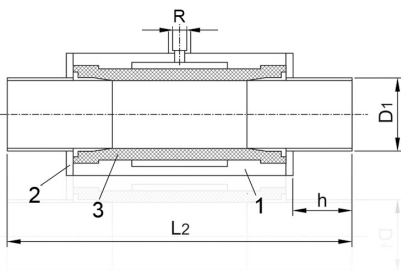
DN	G	L ₁	D ₁	h	R	weight approx. kgs
40	1½"	226	40 x 1,5	45	½"	3,0
50	2"	234	50 x 1,5	45	¼"	3,9
65	2½"	288	65 x 2	65	¼"	5,0
80	3"	345	80 x 2	74	¼"	7,0
100	4"	408	100 x 2	92	¼"	10,0

dimensions in mm

part	designation	material
1	body	light metal
2	cone pieces	light metal
3	hose insert	NR

Modello 100.103/1 D

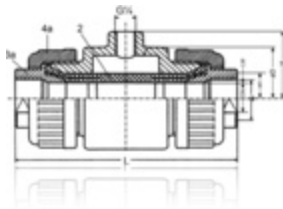
Connessioni tubo liscio, max 4 bar.



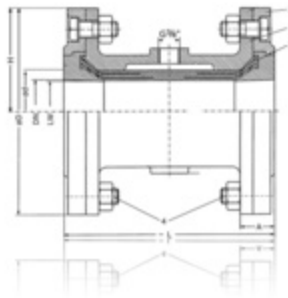
DN	inch	L ₂	D ₁	h	R	weight approx. kgs
40	1½"	254	40 x 1,5	45	½"	3,0
50	2"	260	50 x 1,5	45	¼"	3,9
65	2½"	335	65 x 2	65	¼"	5,0
80	3"	400	80 x 2	74	¼"	7,0
100	4"	480	100 x 2	92	¼"	10,0

dimensions in mm

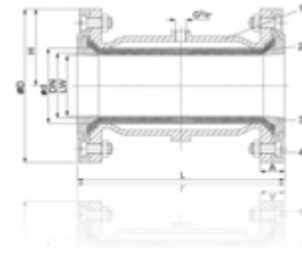
part	designation	material
1	body	light metal
2	cone pieces	light metal
3	hose insert	NR



DN 15 - 32
Fig. 103 A



DN 40-100
Fig. 103



DN 125-300
Fig. 103

Valvole certificate ATEX, filettate da DN15 a DN32, flangiate per misure più grandi.

DN15-DN100 max 6 bar

DN125-DN200 max 4 bar

DN250-DN300 max 3 bar

Possiamo realizzare anche modelli con pressioni di lavoro e caratteristiche differenti su richiesta.

DN	G	LW	L	ØD	Ød	H	A	B ¹⁾	length hose insert	vol/ l ²⁾	weight approx. kgs	
											GG	alu
15	1/2"	15	140	66	33	42	-	-	101	0,1	1,1	-
20	3/4"	20	140	66	33	42	-	-	101	0,1	1,1	-
25	1"	25	158	79	37	50	-	-	110	0,1	2,0	-
32	1 1/4"	32	164	87	46	54	-	-	115	0,2	2,3	-
40	-	38	155	150	55	75	26	-	137	0,2	5,6	2,8
50	-	45	165	165	67	83	27	-	144	0,4	7,1	3,5
65	-	60	185	185	84	93	31	-	162	0,7	10,0	4,5
80	-	75	225	200	103	100	32	-	202	1,4	13,0	6,5
100	-	95	280	220	127	110	34	225	257	3,0	19,2	8,5
125	-	120	350	250	157	125	43	278	323	4,5	27,0	14,2
150	-	145	420	285	185	143	47	330	393	6,5	43,3	21,1
200	-	190	560	340	239	170	54	420	529	16,0	78,0	34,4
250	-	229	680	405	306	198	82	508	640	37,0	88,0	-
300	-	278	820	460	362	223	98	600	764	67,0	147,0	-

dimensions in mm

¹⁾ max. valve width from DN 100 (not drawn)

²⁾ appr. control space volume in litres (l) with valve being closed

part	designation	material
1	body	GG 25 or light metal
2	hose insert	NR
3	cone flanges	GG 25 or light metal
3a	cone pieces	steel ¹⁾ or stainless steel
4	bolts/nuts	zinc-coated steel
4a	union nut	PP

¹⁾ with DN 20 = alu (GAL SI 12)

Modello 100.103/2A

www.rometec.it - info@rometec.it - Rometec srl - www.rometec.it - info@rometec.it

Valvole con attacco rapido universale Storz. In alluminio o acciaio inox.



Modello 100.103/2B



Valvola con regolatore, elettrovalvola, pressostato di allarme.
In alluminio o acciaio inox

Modello 100.103/3



Valvola con attacco rapido universale Storz e camicia di riscaldamento.

Modello 100.103/4

Valvola con connessioni clamp sanitarie

Modello 100.103/5

Valvola con connessioni DIN 11851 sanitarie filettate.