

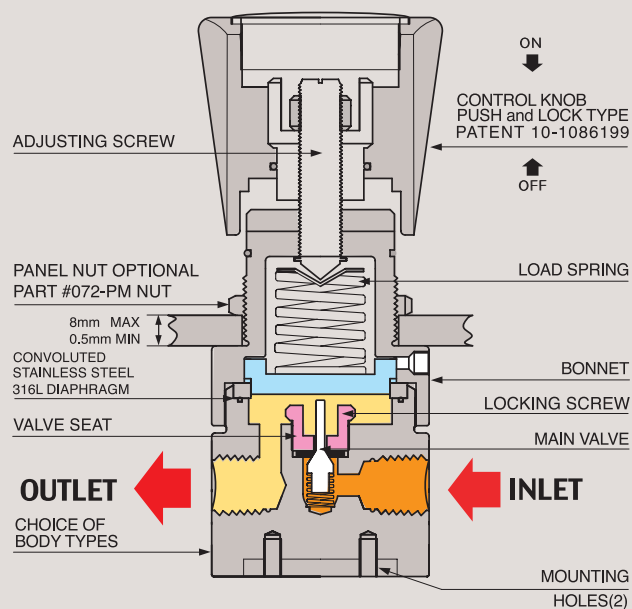


072 SERIES

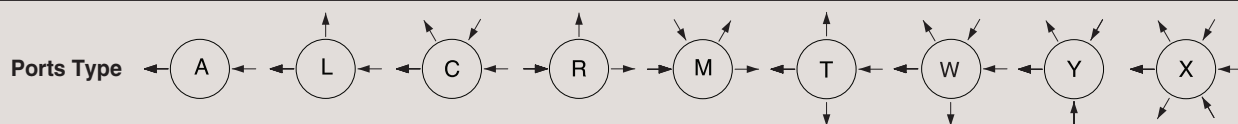
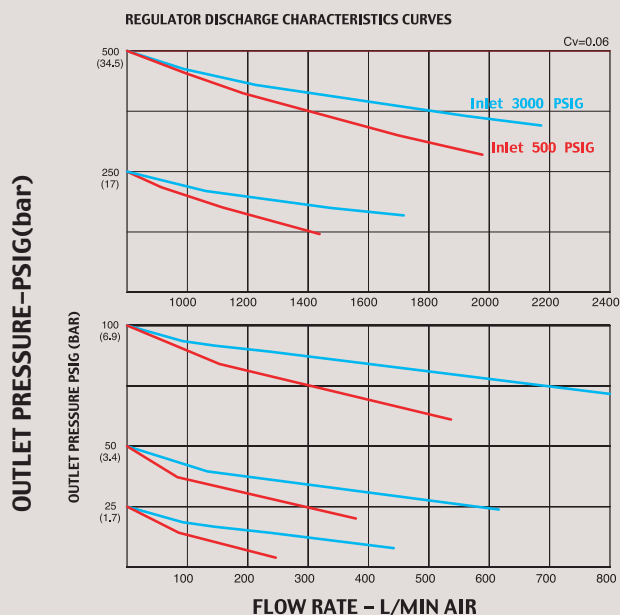
SINGLE STAGE LOW PRESSURE NPT TYPE



FUNCTIONAL SCHEMATIC



FLOW CHART



Single Stage Low Pressure NPT type (1/4")

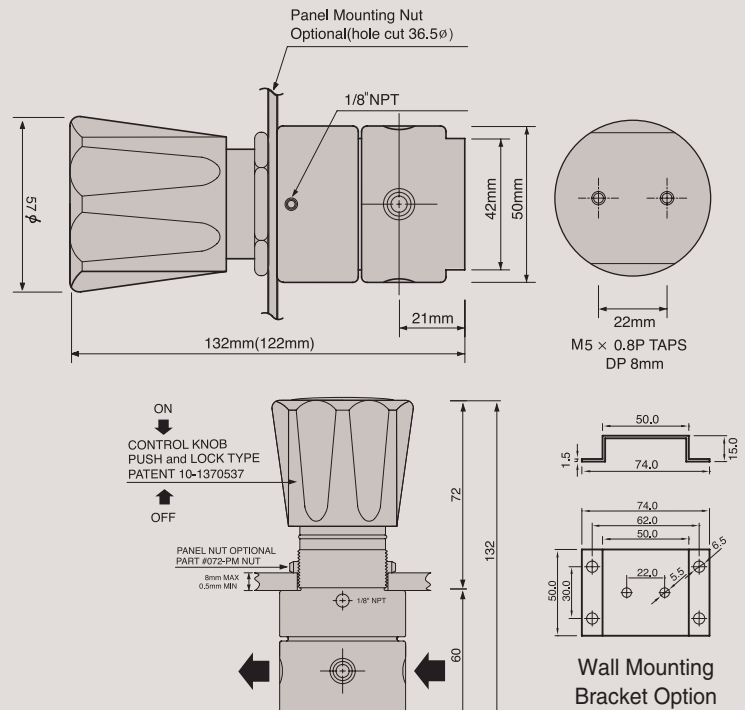
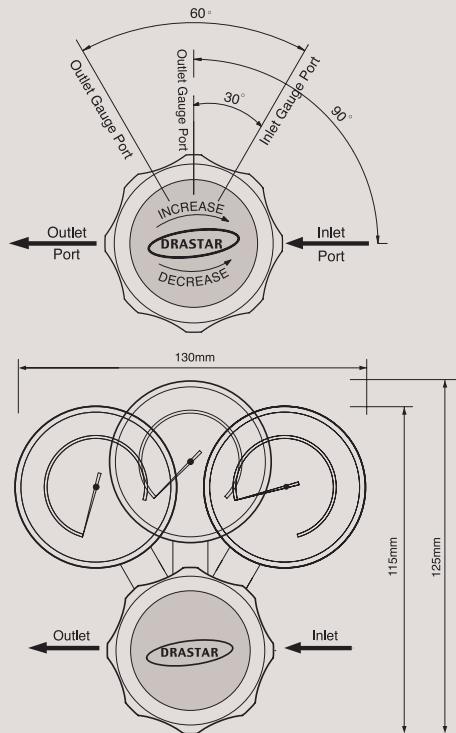
SPECIFICATIONS

Ports	1/4" NPT type 072X-0000L-1S, 3-ports 072X-0000C-1S, 4-ports
Leak Rate Certification	to 2x10 ⁻⁸ atm cc/sec Helium available.
Body Materials	072S-0000-1S / Stainless steel 316L 072B-0000-1S / Brass
Bonnet Material	Nickel Plated Brass / Stainless steel 316L
Diaphragm	Stainless steel 316L
Main Valve	Stainless steel 316L
Valve Spring	Stainless steel 316L
Valve Seat	Teflon [®] (Kel-F, Polyimide, etc.. Optional)
Inlet Pressure Ranges	072X-0000-1S, 3,600psig (250bar) 072X-0000-1S-5, 600psig (42bar)
Outlet Pressure Ranges	25(1.7bar), 50(3.4bar), 100(7bar), 250(17bar), 500psig(35bar)
Self-Venting	072X-0000-1S-V, Optional
Operating Temperature	-40° C - +70° C (-40° F - +160° F) (Standard) 072x-0000-1S-H1, +120° C (Optional) 072x-0000-1S-H2, +250° C (Optional)
Flow Capacity	Cv=0.06 (Cv=0.2 etc.. Optional)
Standard Optional	CGA, Inlet and Outlet Gauges, etc..

INSTALLATION DIMENSIONS

METRIC EQUIVALENTS ARE IN PARENTHESES

GAUGE PORT OPTIONS



072 Series is a 1/4" NPT type single-stage low pressure reducing regulator being most extensively used for gas cylinder and precision industry.

With DRASTAR' s patented (patent #1086199) "push and lock type handle", you can operate it easily and stably; "locking" by pushing down the handle will prevent any slight change of pre-set pressure value, which could possibly be caused by any vibration from gas pipeline or ambient applications and the other way "unlocking" by pulling it back enables you to adjust the pressure value freely again.

Features & Applications

- Inlet pressures are 3600psig (250bar) or 600psig (42bar) and outlet pressures are 25psig (1.7bar) ~ 500psig (35bar)
- Panel mounting nut or wall mounting bracket available as option
- Design proof pressure: 150% of maximum rated
- Applicable for research labs, industrial gas control, gas cylinder, general gas line, bulk gas line, analytical application, ultra-pure gases, mixing gases, corrosive gases as well as liquid lines.
- 2-ports, 3-ports, 4-ports and 5-ports, 6-ports available

※ DRASTAR' s all pressure regulators are assembled, cleaned, inspected, and packed in clean-rooms equipped with clean bench, helium detector, particle counter, ultrasonic cleaner, ultrapure water system, vacuum packaging machine, etc. through oxygen cleaning procedure in compliance with process and regulations indicated in CGA 4.1. and or ASTM G-93 and are free of any grease or oils.

※ **Caution:** Filtering (gas $7\mu\text{m} \sim 15\mu\text{m}$, water $15\mu\text{m} \sim 80\mu\text{m}$) is a MUST to use in the general gas application other than high purity gases. Otherwise, it may cause a failure to the regulators. It is strongly recommended to install filter for extension of life span and saving the maintenance expense.

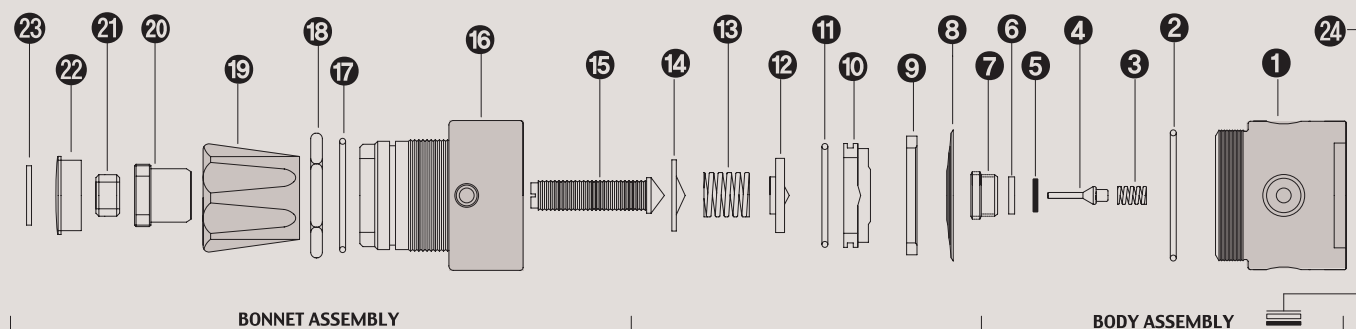
ORDERING INFORMATION

(W)072 S - 0025 L - 1S H - 5 - V - H1

BASIS SERIES NUMBER	BODY MATERIAL	OUTLET PRESSURE RANGE	PORT TYPE	FLOW CAPACITY	DIAPHRAGM MATERIAL	INLET PRESSURE	SELF VENTING	HIGH TEMPERATURE
Standard Inlet Pressure 3600psig (250 bar)	B = Brass S = Stainless Steel 316L	0025 = 25psi(1.7bar) 0050 = 50psi(3.5bar) 0100 = 100psi(7bar) 0250 = 250psi(17bar) 0500 = 500psi(35bar)	A = 2-Ports L = 3-Ports C = 4-Ports W = 5-Ports R = 3-Ports M = 4-Ports T = 4-Ports Y = 4-Ports X = 6-Ports	1 = 1/4" NPT type 1S = Cv0.06 Standard 1O = Cv0.2 Optional	STS 316L Standard H = Hastelloy-C Optional	5 = Inlet 600psi(42bar) Optional	V = Self-Venting Optional	H1 = 120° C H2 = 250° C H2 = 350° C Optional

※ Note : 1) (W) model is only for liquid and water. 2) H1, H2, H3 option is not available for brass products.

072 SERIES PART LIST



STANDARD MODEL SERIES

Item No.	Description	Part No.	Model Application
01	Body	072-02-01	02-01 Stainless Steel 316L body / 02-02 Brass body
02	Boby O-Ring	072-02-00	All Model Same
03	Valve Spring	072-04-01	04-01 STS 316L / 04-03 Hastelloy-C-22 / 04-04 Monel
04	Main Valve	072-06-01	06-01 STS 316L / 06-03 Hastelloy-C-22 / 06-04 Monel
05	Valve Seat	072-10-01	10-01 PFA / 10-05 Vespel / 10-06 Peek
06	Valve Seat Cartridge	072-08-01	08-01 Stainless Steel 316L / 08-02 Brass
07	Locking Screw	072-12-01	All Model Same
08	Diaphragm	072-16-01	16-01 STS 316L / 16-02 Hastelloy C-22
09	Diaphragm Plate	072-22-02	All Model Same
10	Back-up Plate	072-26-03	All Model Same
11	Back-up Plate O-Ring	072-28-01	All Model Same
12	Spring Plate	072-30-01	All Model Same
13	Load Spring	072-38-01	11-01 25psi / 11-02 50psi / 11-03 100psi / 11-05 250psi / 11-07 500psi
14	Pivot	072-40-01	All Model Same
15	Adjusting Screw	072-42-01	All Model Same
16	Bonnet	072-44-02	44-01 Stainless steel 316L / 44-02 Brass
17	Push & Lock O-Ring	072-46-01	All Model Same
18	Panel mount Nut	072-48-01	All Model Same
19	Control Knob	072-50-01	50-01 ABS / 50-04 Aluminum Control knob
20	Push & Lock Handle nut	072-52-01	All Model Same
21	Locking Nut	072-54-01	All Model Same
22	Name Cap	072-56-01	56-01 ABS
23	Name Cap Plate	072-58-01	58-01 25psi/58-02 50psi/58-03 100psi/58-04 200psi/58-06 350psi/58-07 500psi
24	Filter Assembly	072-60-01	All Model Same