

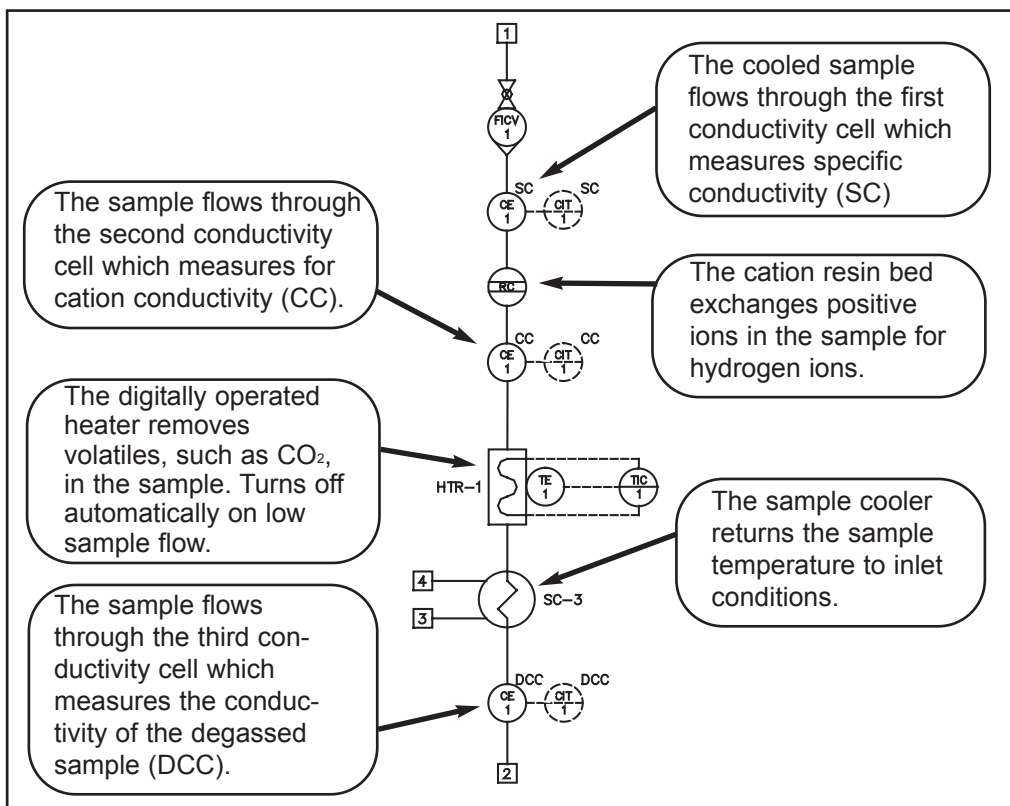


DCCP DEGASSED CATION CONDUCTIVITY PANEL

Simple and Compact Cycle Chemistry Validation

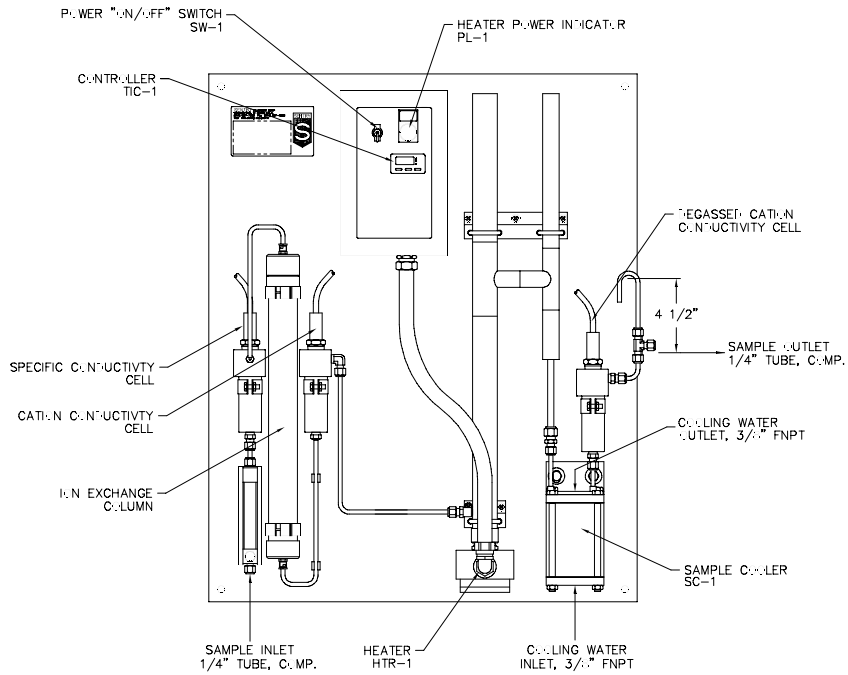
- Capable of measuring specific conductivity (SC), cation conductivity (CC) and degassed cation conductivity (DCC)
- Operates in accordance with ASTM D4519.
- Compact wall mount design
- Sample cooler ensures CC and DCC probes receive identical sample temperatures, eliminating errors.

Sample Flow Diagram



SPECIFICATIONS

- Dimensions:** 32" x 26" x 7" as shown
- Weight:** 60 pounds
- Pressure Rating:** 100 psig (7 barg)
- Temperature Rating:** 130°F (55°C) with RC-100 before degas
- Sample Flow:** 100-150 cc/min
- Sample Inlet Connection:** 1/4" tube fitting
- Sample Outlet Connection:** 1/4" tube fitting
- Sample Cooler Type:** TEB-4221
- Cooler Cooling Water Connections:** 3/8" FNPT
- Cooling Water Consumption:** 1-3 gpm
- Input Power:** 110-120/220-240 VAC, 1Ø, 50/60 Hz
- Power Consumption:** 1.6 KVA
- Cell Holders (optional):** 3/4" FNPT, 316SS
- Resin Column (optional):** Sentry RC-100



DCCP Model Number Options

A Voltage	B Cell Holders	C Flow Indicator with valve	D Analyzers/Probes
1 = 110-120 VAC, 1Ø, 50/60 Hz	0 = None	0 = None	0 = Customer Supplied
2 = 220-240 VAC, 1Ø, 50/60 Hz	1 = DCC	1 = Yes	1 = Supplied by Sentry (Customer to specify)
	2 = CC & DCC (with RC-100)		
	3 = SC, CC & DCC (with RC-100)		

Standard model DCCP 1000 is supplied with sample heater and controller, sample heating chamber, and sample cooler.

Sentry's Modular approach allows you to build the unit to fit your service: DCCP-ABCD. For example: DCCP-2110 has 220-240 VAC, 1Ø, 50/60 Hz voltage, DCC cell holder, flow indicator with valve, and a customer supplied analyzer.



SENTRY Equipment Corp

856 E. Armour Rd.
 PO Box 127
 Oconomowoc, WI 53066 USA
 Phone: 262-567-7256
 Fax: 262-567-4523

E-mail:
 sales@sentry-equip.com

Website:
 www.sentry-equip.com

For further information, contact:

