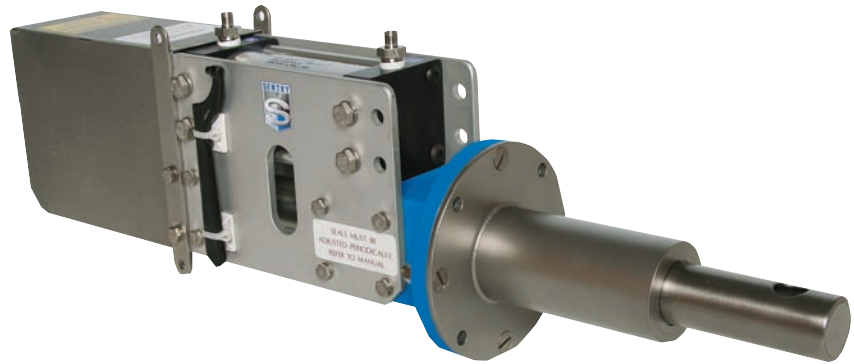




*The
Sampling
Connection*



MODEL RX AUTOMATIC SAMPLER

Automatically Samples Free-Flowing Materials and Slurries

Features

- Compact and low maintenance
- No moving parts in conveyance of sample to container, keeps consistent product characteristics
- 316 stainless steel construction of material-contact surfaces
- Versatile installation in drop chutes, bins, hoppers, pipes or air slides
- Machine comes with 10 ft. of flex hose and a 2 qt. plastic sample collection container.

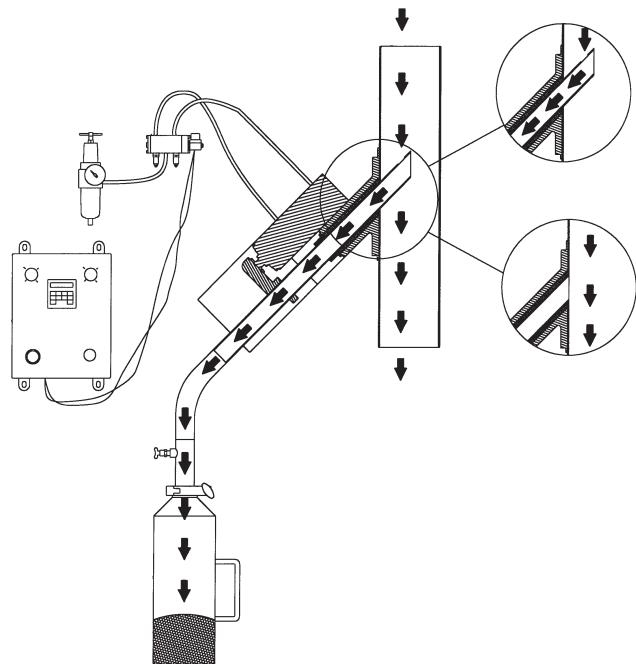
Options

- Custom mounting adapters for round, square or other shaped chutes or bins
- Special hardened construction materials or special coated contact parts available

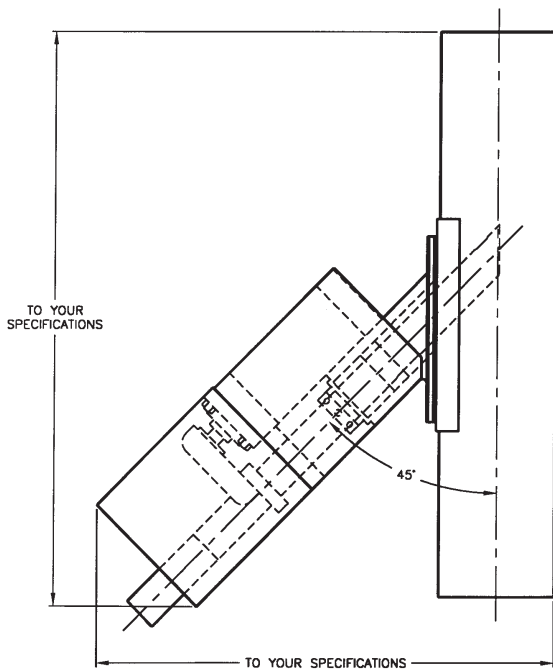
Description

The Model RX Sampler is designed for automatic strip sampling of materials such as free-flowing powders, granules, pellets, grain and seed. Samples can be drawn from positive or negative, horizontal or vertical dilute phase pneumatic conveying systems and bins, gravity spouts or hoppers.

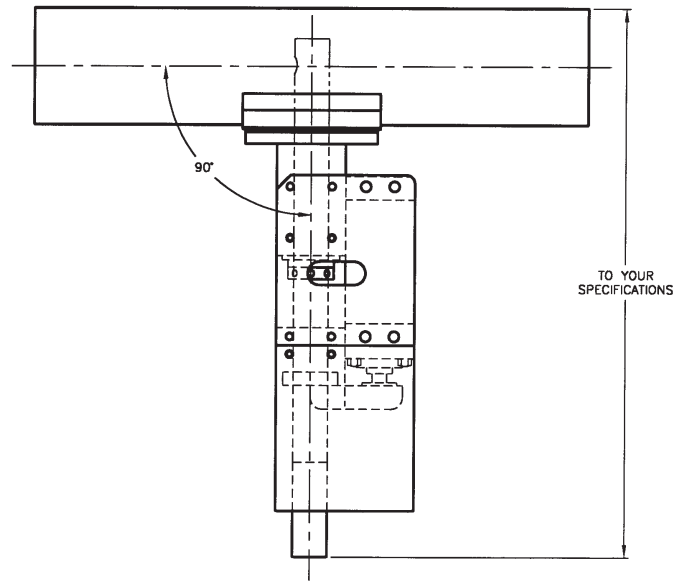
The Model RX features a solenoid operated air cylinder. The air cylinder extends the sample tube into the process line. While in line, the tube is continually taking sample and simultaneously discharging it to the collection point.



TECHNICAL DATA



RX 45



RX 90

SPECIFICATIONS

- Basic Electrical Requirements 115 VAC, single phase, 60 Hz
- Air Requirements 60 psi minimum
- Sample Tube Size 1.5" (3.8 cm) OD x 4" standard stroke length; length to specifications;
opening to specifications
- Suggested Discharge Connection flexible plastic tubing to a collection container included
- Sampler Construction aluminum housing / 316 stainless steel tube / Teflon® seals
- Control Package control meets NEMA 4X classification and allows for fully automatic sampling;
custom and NEMA 7, 9 applications upon request



SENTRY EQUIPMENT CORP

856 E. Armour Rd.
PO Box 127
Oconomowoc, WI 53066 USA
Phone: 262-567-7256
Fax: 262-567-4523

E-mail:
sales@sentry-equip.com

Website:
www.sentry-equip.com

For further information, contact:

The Sampling Connection