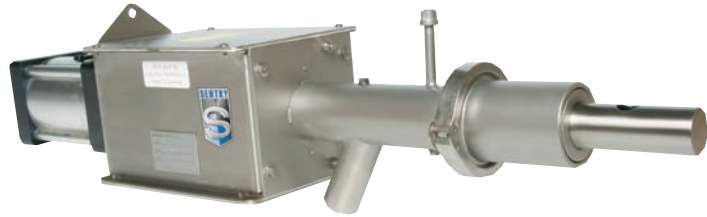




The
Sampling
Connection



MODEL PR AUTOMATIC SAMPLER

Automatically Samples from Dilute and Dense Phase Convey Lines

Features

- Designed to eliminate the degradation of product
- Includes 316 stainless steel tube and stainless steel body, filter/regulator and gauge, Teflon® seals and maintenance free industrial air cylinder
- Fully retracting sample tube will not restrict product flow between sample cycles
- 1/8" NPT capped purge nipple for sample tube cleanout

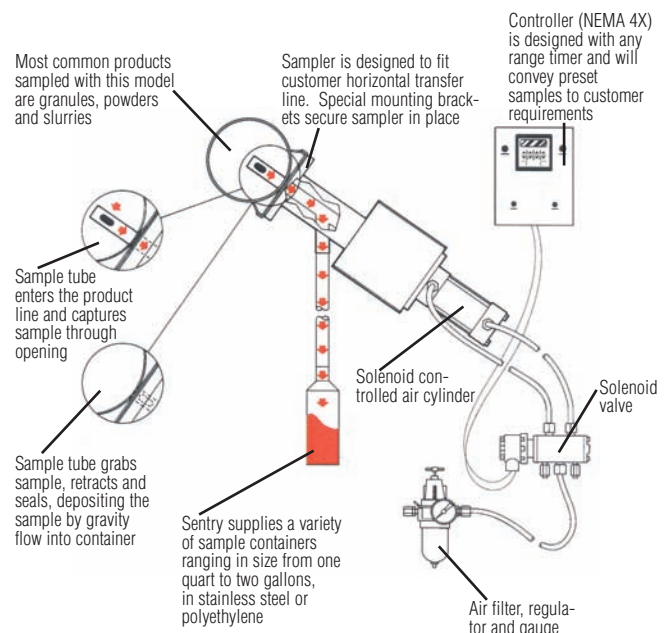
Options

- Sample tube in stroke lengths of 4", 6" and 8"
- Hardening or NEDOX® treatment of contact parts
- Nosepiece for vertical applications

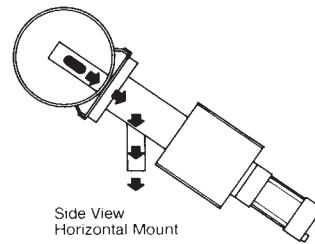
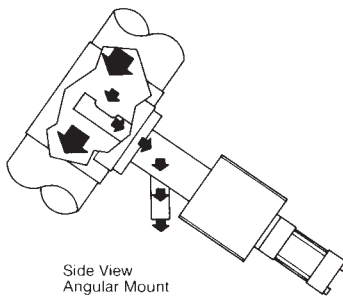
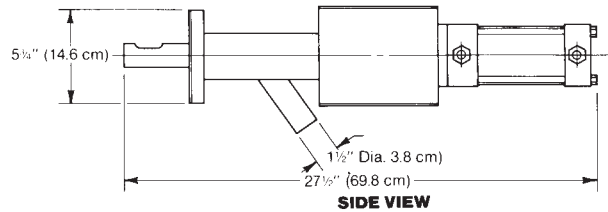
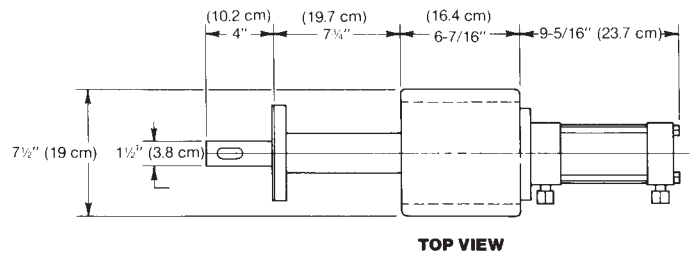
Description

The Model PR is designed for spot sampling of free-flowing materials in dilute and dense phase horizontal pneumatic transfer lines. Rapid cycling acquires a large volume of sample over a short period of time. The Model PR is also recommended for slurry sampling.

The Model PR samples when a solenoid-controlled air cylinder operates a reciprocating probe in the product flow. A representative sample collects by gravity to the discharge point.



TECHNICAL DATA



SPECIFICATIONS

- Basic Electrical Requirements 115 VAC, single phase, 60 Hz; control box fused to 2 amps
- Air Requirements 80 psig, 1.5 cfm per cycle
- Quantity of Sample determined by flow rate and aperture size and time in line;
standard aperture 3/4" wide x 1" deep x stroke length less 1-1/2"
- Product Size 10 micron to 1/4"; larger sizes upon request
- Recommended Location of Sampler bottom wall of horizontal lines 10'-12' (304.8 cm-365.8 cm) from any elbow
- Suggested Connection to Collection Point rigid metal or flexible tubing to a collection
container or multi-position collection cabinet
- Materials or Construction 304 and 316 stainless steel
- Temperature Range up to 250° F



SENTRY EQUIPMENT CORP

856 E. Armour Rd.
PO Box 127
Oconomowoc, WI 53066 USA
Phone: 262-567-7256
Fax: 262-567-4523

E-mail:
sales@sentry-equip.com

Website:
www.sentry-equip.com

For further information, contact:

The Sampling Connection