



## FLF SAMPLE COOLER

**Compact, efficient sample cooling for high flow gases and liquids**

- Double helical coil design
- Most efficient sample cooler available
- Minimize cooling water needs

The FLF series sample cooler is designed for efficient and cost effective sample cooling where higher flow or low pressure drop is required. Optimal service for flows below 3500 ccm for both single phase and condensing heat transfer. Standard tube side materials are 316SS or Inconel® 625 for high chloride cooling water applications. Optimized for steam condensing service.

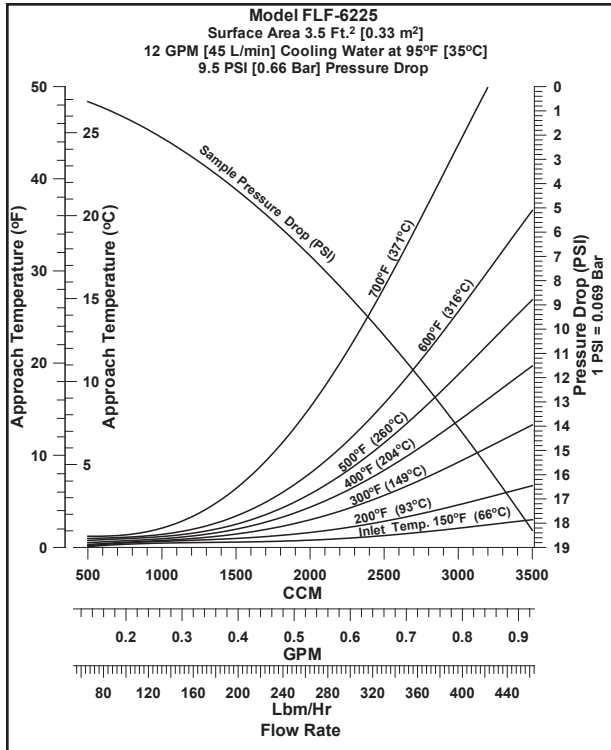
### Specifications - FLF Series

Model No.	Shell Design	Tube Design	Tube Material	Shell Material	Area	Weight	Part Number
FLF6225	450 psi @ 650°F 31 bar @ 343°C	5000 psi @ 1000°F 344 bar @ 537°C	316SS 3/8" O.D. x 0.065"MW	304/316SS	3.5 ft <sup>2</sup> 0.22 m <sup>2</sup>	23 lbs 10.5 kg	7-00757A
FLF6225U	300 psi @ 650°F 20 bar @ 343°C	4500 psi @ 1000°F 310 bar @ 537°C	316SS 3/8" O.D. x 0.065"MW	304/316SS	3.5 ft <sup>2</sup> 0.22 m <sup>2</sup>	23 lbs 10.5 kg	7-00763A
FLF6222	450 psi @ 650°F 31 bar @ 343°C	2485 psi @ 680°F 171 bar @ 360°C	316SS 3/8" O.D. x 0.035"AW	304/316SS	3.5 ft <sup>2</sup> 0.22 m <sup>2</sup>	19 lbs 9 kg	7-00760A
FLF62B3	450 psi @ 650°F 31 bar @ 343°C	3400 psi @ 1100°F 234 bar @ 593°C	Inconel® 625 3/8" O.D. x 0.035"MW	304/316SS	3.5 ft <sup>2</sup> 0.22 m <sup>2</sup>	19 lbs 9 kg	7-00632K
FLF62B3U	300 psi @ 650°F 20 bar @ 343°C	3400 psi @ 1100°F 234 bar @ 593°C	Inconel® 625 3/8" O.D. x 0.035"MW	304/316SS	3.5 ft <sup>2</sup> 0.22 m <sup>2</sup>	19 lbs 9 kg	7-00632L
FLF64B3	150 psi @ 250°F 10 bar @ 121°C	3400 psi @ 1100°F 234 bar @ 593°C	Inconel® 625 3/8" O.D. x 0.035"MW	Cupro-Nickel	3.5 ft <sup>2</sup> 0.22 m <sup>2</sup>	33 lbs 15 kg	7-00632M
FLF4225	450 psi @ 650°F 31 bar @ 343°C	5000 psi @ 1000°F 344 bar @ 537°C	316SS 1/4" O.D. x 0.042"MW	304/316SS	2.4 ft <sup>2</sup> 0.22 m <sup>2</sup>	16 lbs 7 kg	7-00759A
Consult factory or see Bulletin 4.3 for performance curves							
FLF4225U	300 psi @ 650°F 20 bar @ 343°C	4400 psi @ 1000°F 303 bar @ 537°C	316SS 1/4" O.D. x 0.042"MW	304/316SS	2.4 ft <sup>2</sup> 0.22 m <sup>2</sup>	16 lbs 7 kg	7-00775A
Consult factory or see Bulletin 4.3 for performance curves							

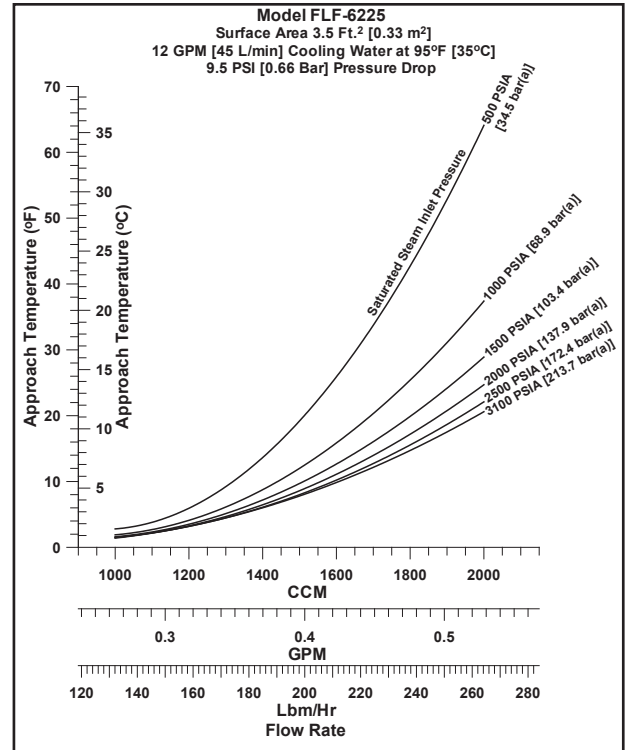
**NOTE:**

- Canadian Registration Number available for most models. Consult factory for CRN and other options and information.
- U in model number denotes ASME stamped model.
- Vessels are exempt from CE marking per PED 97/23/EC. Vessels are below or equal to the limits set forth in Article 3, Sections 1.1, 1.2, 1.3 and Section 2 as applicable, and are designed and manufactured in accordance with sound engineering practice (meets the general requirements of the ASME Section VIII, Division 1, Boiler And Pressure Vessel Code). Nameplate will bear the name of Sentry Equipment Corp. and safety instructions will be included per Article 3, Section 2.

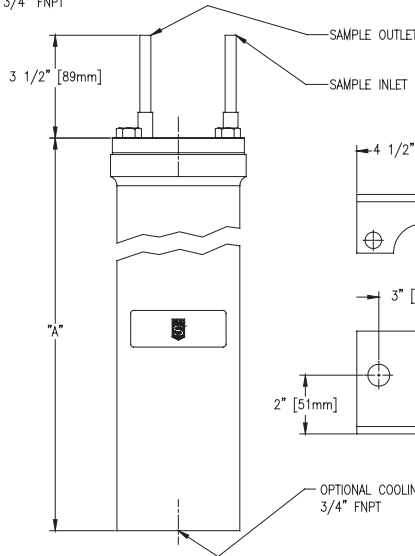
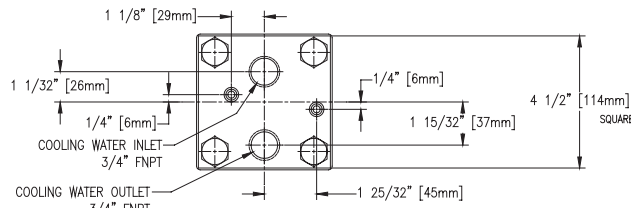
## Performance Curve - Water



## Performance Curve - Steam



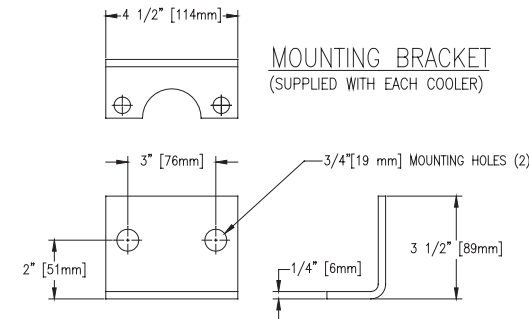
Due to two-phase flow variability, please consult factory for pressure drop.



DIMENSION CHART

COOLER	DIM. "A"	SAMPLE CONNECTION SIZES
FLF42xx	8 7/8" [225 mm]	1/4" O.D. TUBE
FLF6xxx	13 3/8" [339 mm]	3/8" O.D. TUBE

MOUNTING BRACKET  
 (SUPPLIED WITH EACH COOLER)



## SENTRY Equipment Corp

856 E. Armour Rd.  
 PO Box 127  
 Oconomowoc, WI 53066 USA  
 Phone: 262-567-7256  
 Fax: 262-567-4523

E-mail:  
[sales@sentry-equip.com](mailto:sales@sentry-equip.com)

Website:  
[www.sentry-equip.com](http://www.sentry-equip.com)

For further information, contact:

