

HPI INLINE SAMPLER

Representative Liquid Sampling From Process Lines

- **Close coupled sampling valve for high pressure low dead volume inline sampling**
- **Needle or tube stub configurations in a variety of sizes**
- **Variety of end connections**
- **Optional enclosure for complete containment**

The Sentry HPI Inline Sampler has unique features compared to other inline process samplers. By using a close coupled ball valve specifically designed to provide low dead volume in the sample flow area, the Sentry HPI Inline Sampler insures accurate and representative samples from flowing process lines at pressures up to 2200 psig (150 barg) maximum. Additionally, the pressure drop of the flowing fluid through the sampler is low and there are no valve stems or other components passing through the sampling stream.

Inline sampling techniques are most applicable where speed loops or other pressure reduction techniques are not viable. The Sentry HPI Inline sampler uses our standard side discharge dual needle assembly that assures septum integrity and full venting of process vapors. This patented non-coring needle design punctures the septum without cutting it, allowing for full resealing of the septum when the sample bottle is removed. The tapered bottle shroud assures proper septum and needle alignment preventing accidental spillage or needle breakage. A variety of needle arrangements and sample bottle sizes are available to meet most sampling requirements. Additionally, a tube stub option is available for high viscosity fluids or those that contain particulates. A sample purge connection is a standard feature that allows the user to clear any remaining sample from the unit after sampling. The purge process can be as simple as a check valve and air puff bulb or regulated compressed air/nitrogen.

Since operator safety is of the highest concern, the sampling valve interface features an adjustable throttle stop and spring return handle. This assures proper sample control and quick closure upon release of the sampling valve.

SPECIFICATIONS

Wetted Materials: Body - 316SS, O-rings - Viton®, Kalrez®, Bottle Shroud - Nylon, other materials available
Pressure Rating: 2200 psig max. @ 100°F (150 barg @ 38°C) or 100 psig @ 450°F max. (7 barg @ 232°C max.)
 Flange end connections have lower ratings--Consult Factory
Cv: 30.0
Sample Valve: Close coupled ball valve with spring return handle and adjustable throttling stop
Purge Connection: 1/8" compression (shipped with cap)

SAMPLER OPTIONS

End Connections

Size	Designator		
	NPT	FLG	COMP
1/4" (6mm)	N1/2	F1/2	C1/4
3/8" (10mm)			C3/8
1/2" (15mm)			C1/2
3/4" (20mm)			C3/4
1" (25mm)			C1
1-1/2" (38mm)			F1-1/2

Sampler Interface

Process	Vent	Designator
Needle Assembly (I.D.)		
0.065"	0.065"	11
0.065"	0.083"	12
0.083"	0.083"	22
0.110"	0.083"	32
0.083"	0.110"	23
Tube Stub Assembly (I.D.)		
0.188"	0.140"	44

- Add V for Viton® or K for Kalrez® to specify O-rings
- Consult factory for other needle/tube stub arrangements

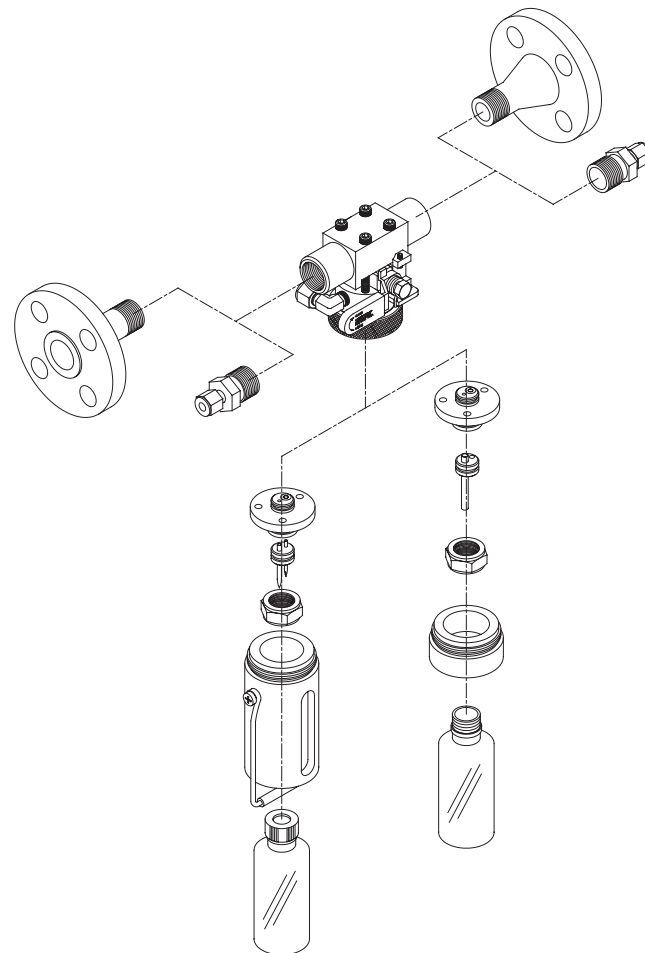
Sample Bottle Size & Type

Boston Round		Schott/Duran	
Size (oz/ml)	Designator	Size (ml)	Designator
2 (60)	B2	50	S50
4 (125)	B4	100	S100
8 (250)	B8	250	S250
16 (500)	B16	500	S500
32 (1000)	B32	1000	S1000

- Add S for septum cap (needle assembly) or P for plain cap (tube stub assembly). Boston Round bottle cap/thread interfaces per GPI finish standards. Schott/Duran bottle cap/thread interfaces per ISO 4796.
- Standard septum material is teflon coated silicone.
- Consult factory for other bottle or septum arrangements.

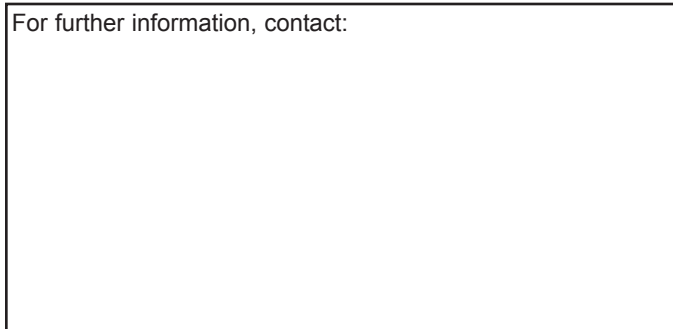
Other

Enclosure for containment and other special features available. Please consult factory.



Example: Model HPI-F1-22V-B8S is a HPI sampler supplied with 1" flanged connections, .083" fill needle, .083" vent needle, Viton® O-rings and a 8 oz. Boston Round sample bottle with septum.

For further information, contact:



SENTRY Equipment Corp

856 E. Armour Rd.
 PO Box 127
 Oconomowoc, WI 53066 USA
 Phone: 262-567-7256
 Fax: 262-567-4523

E-mail:
sales@sentry-equip.com

Website:
www.sentry-equip.com