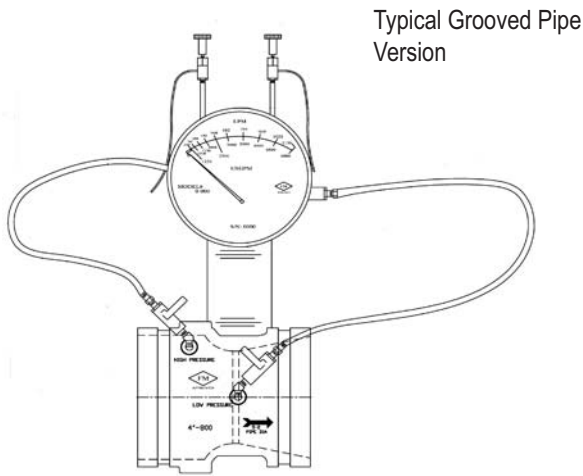


## Fire Pump Test Meter

FM Approved



Typical Grooved Pipe Version



The Fire Pump Test Meters are available in Butt Weld, Grooved, 150 # Flanged and 300 # Flanged.

### Fire Pump Flow System and Sizes

Line Size	Pump US GPM	Meter Range Min & Max US GPM
** 1-1/4"	25	12.5 - 50
** 2"	50	25 - 100
** 2-1/2"	100	50 - 200
3"	150	75 - 300
3"	200	100 - 400
4"	250	125 - 500
4"	300	150 - 600
4"	400	200 - 800
4"	450	225 - 900
5"	450	225 - 900
5"	500	250 - 1000
5"	750	375 - 1500
6"	500	250 - 1000
6"	750	375 - 1500
6"	1000	500 - 2000
6"	1250	625 - 2500
8"	1000	500 - 2000
8"	1250	625 - 2500
8"	2000	750 - 3000
8"	2500	1250 - 5000
8"	3000	1500 - 6000

Line Size	Pump US GPM	Meter Range Min & Max US GPM
10"	1500	750 - 3000
10"	2000	1000-4000
10"	2500	1250-5000
10"	3000	1500-6000
10"	3500	1750-7000
10"	4000	2000-8000
10"	4500	2250-9000
12"	2500	1250-5000
12"	3000	1500-6000
12"	3500	1750-7000
12"	4000	2000-8000
12"	4500	2250-9000
12"	5000	2500-10000
** 14"	4000	2000-8000
** 14"	4500	2250-9000
** 14"	5000	2500-10000
** 14"	6000	3000-12000

\*\* Sizes 1-1/4", 2" and 14" are not FM approved  
For all sizes, please check for stock availability

Note: 1 US GPM = 3.785 LPM

Continued Overleaf

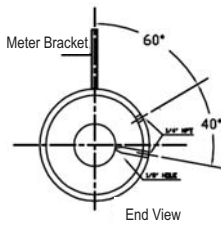
Page 1 of 2



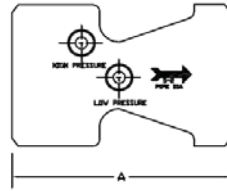


## Fire Pump Test Meter

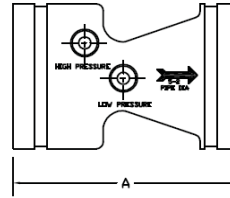
FM Approved



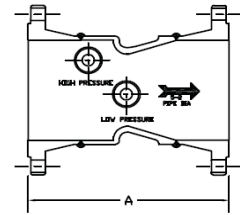
Butt Weld / Grooved



Butt Weld



Grooved



Flanged

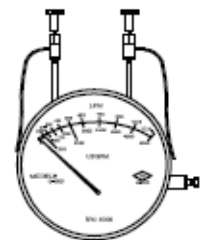
Size	Pressure 500 PSI Butt Weld / Grooved		Pressure 275 PSI 150 # Flanged		Pressure 500 PSI 300 # Flanged	
	'A' DIM	Approx Weight	'A' DIM	Approx Weight	'A' DIM	Approx Weight
1-1/4"	4.875"	2 lbs	—	—	—	—
2"	5.000"	3.5 lbs	—	—	—	—
2-1/2"	4.000"	5 lbs	9.250"	21 lbs	10.000"	28 lbs
3"	4.000"	6 lbs	3.975"	30 lbs	10.250"	36 lbs
3-1/2"	—	—	—	—	—	—
4"	5.375"	10 lbs	11.375"	40 lbs	12.125"	60 lbs
5"	6.000"	20 lbs	13.000"	58 lbs	13.750"	84 lbs
6"	7.000"	22 lbs	14.000"	70 lbs	14.750"	106 lbs
8"	7.250"	45 lbs	15.250"	107 lbs	16.000"	195 lbs
10"	8.000"	61 lbs	16.000"	165 lbs	17.250"	243 lbs
12"	12.000"	128 lbs	21.000"	288 lbs	22.250"	408 lbs
14"	14.000"	—	—	—	—	—
16"	28.000"	—	—	—	—	—

### Material Specifications

Materials: Machined 1018 / 1026 Carbon Steel or Cast carbon Steel 'WCB'  
 Valves: 1/4" Brass Ball  
 Flange Opt: 150# ANSI B 16.5  
 300# ANSI B 16.5  
 ID Tag Polycarbonate

### Meter Data

Construction: Aluminium Body  
 Operation: Diaphragm (Buna Convuluted)  
 Accuracy: +2% Full Scale  
 Temperature: 180°F / 80°C  
 Pressure: 500 PSIG - 3450KPA  
 Approx. Weight: 3.75 lbs (1.7 kgs)



### Operating Instructions

1. Close system valve
2. Open system by-pass valve and throttle valve
3. Pure meter located on meter as follows:
  - Open shut-off valves and vent valves.
  - When a steady stream of water is passing through each plastic hose, the meter is purged of air.
  - Close vent valve after purging.
4. Start fire pump, read meter in GPM/ LPM
5. Refer to pump GPM / LPM requirement and adjust throttle valve for this requirement.
6. After test open system valve and close system by-pass and throttle valves.

4" Dial Standard - 6" Dial Available

