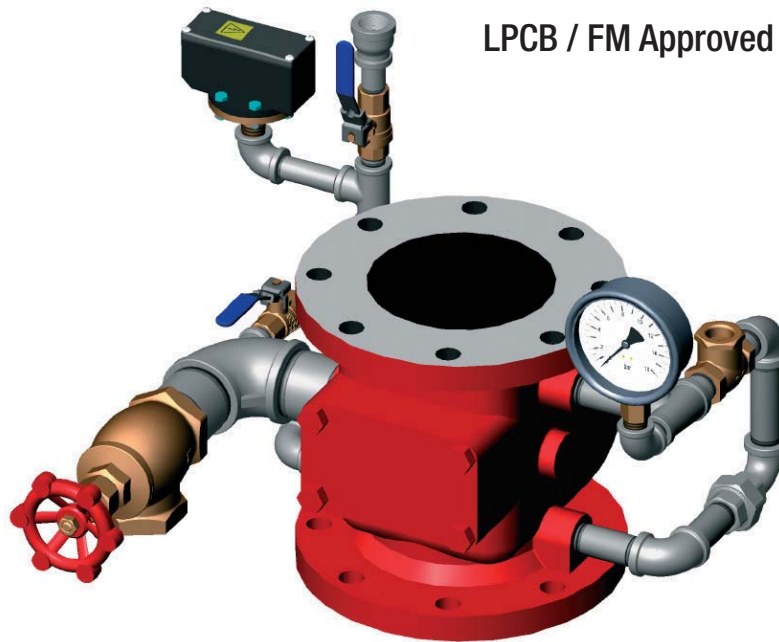


## Wet Alarm Valve

LPCB / FM Approved / UL Listed / CE Marked



### Description

The Model B, D & E Wet Alarm Valves are designed for use in Wet Pipe Sprinkler Installations in buildings not subject to freezing temperatures. A variety of trim packages are available to suit the requirements of various approval authorities and a number of accessories can be supplied. Wet Alarm Valve Stations normally comprise of Alarm Valve, Trim, Gauges and Main Stop Valve. These assemblies are hydrostatically tested to 18 Bar prior to despatch. Accessories include Straps and Padlocks, Pressure Switches, Retard Chamber and Water Motor Alarm Gong.

### Pressure rating

Max. Working Pressure 12 Bar

### Dimensions

Model number	Connections	Pipe Size (mm)	Face / Face (mm)	Weight (Kg)
B	Flange / Flange	DN 80	273.0	23.6
B	Flange / Flange	DN 100	225.4	25.0
B	Flange / Flange	DN 150	263.5	34.1
B	Flange / Flange	DN 200	298.4	56.8
D	Flange / Grooved	DN 100	263.5	22.7
D	Flange / Grooved	DN 150	287.3	29.5
D	Flange / Grooved	DN 200	335.0	56.8
E	Grooved / Grooved	DN 100	285.7	19.1
E	Grooved / Grooved	DN 150	285.7	22.7

### Notes

1. Flat Faced Flange, drilled PN16. Other flange types available on special order.
2. DN150mm groove available in both 165mm and 168mm.
3. Supply pressure gauge not shown. This is mounted below the supply stop valve.
4. The PN16 drilling on the top flange of the DN200 size valve is radially off set to the drilling in the bottom flange. This is required to achieve bolt clearance of the body casting and must be taken into consideration in the design of mating flanged pipe work.

Rapidrop Global

© 2009 Rapidrop  
 Rapidrop is a registered trade mark.  
 Rapidrop Global Limited  
 Registered in England No. 5503278

Rutland Business Park, Newark Road, Peterborough, PE1 5WZ, United Kingdom  
 Tel: +44 (0) 1733 847 510 Fax: +44 (0) 1733 553 958  
 e-mail: rapidrop@rapidrop.com web: www.rapidrop.com

