

SENTRY ESW SINGLE HELICAL TUBE High Viscosity/Large Particulate Sample Cooler

SAMPLE CONDITIONING

The Sentry ESW ensures samples are cooled within a process stream. It may seem simple, but it is uniquely designed for high viscosity/large particle applications. Each ESW cooler efficiently drops temperatures by flowing a sample through the tube side while water flows through the shell side.

Each sampler is manufactured to be easily installed, durable, and long lasting to maximize uptime and ensure product quality.

MODELS

ESW-12222 | ESW-12261 | ESW-122J4

BENEFITS

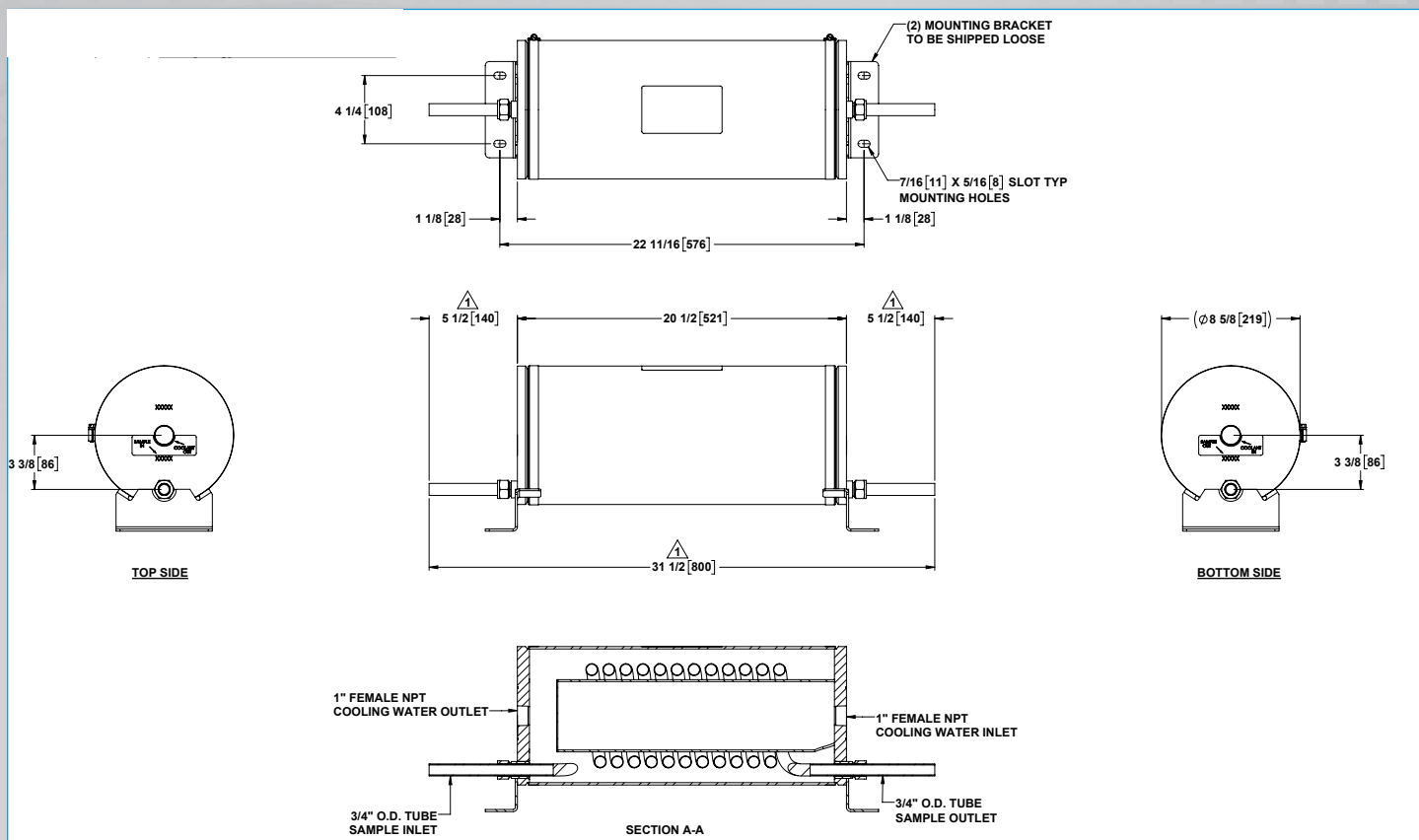
The Sentry ESW has a larger diameter sample tube makes it especially useful for high viscosity liquids and slurries or samples with particulates. It offers optimal service for flows below 1000 cc per minute for single phase heat transfer. Standard tube side material is 316/316L stainless steel.

FEATURES

- Fully drainable helical coil
- Low pressure drop



NOTE: Not recommended for steam condensing service. See TLR, FLR, FXR series sample coolers for steam applications.



SPECIFICATIONS

models	shell design	tube design	tube material	shell material	area	shipping weight	part number
ESW-12222	300 psi at 350°F (21 bar at 177°C)	2000 psi at 1000°F (138 bar at 538°C)	316/316L SS 3/4 in OD x 0.065 in AW				7-06543A
ESW-12261	300 psi at 350°F (21 bar at 177°C)	500 psi at 600°F (34 bar at 316°C)	Titanium UNS R50400 3/4 in OD x 0.049 in AW	304 SS	3.5 ft ² (0.33 m ²)	45 lb (20.5 kg)	7-06543B
ESW-122J4	300 psi at 350°F (21 bar at 177°C)	4000 psi at 600°F (276 bar at 316°C)	Super-Duplex UNS 532750 3/4 in OD x 0.049 in AW				7-06543C

NOTES:

- Please contact factory for both ASME Section VIII or other tube materials,

sentry-equip.com

966 Blue Ribbon Circle North, Oconomowoc, WI 53066 U.S.A. | +1-262-567-7256 | sales@sentry-equip.com



© 2016 Sentry Equipment Corp. All rights reserved. All product and company names are property of their respective owners. It is solely the responsibility of end users, through their own testing and analysis, to select products and materials suitable for their specific application requirements, ensure they are properly installed, safely applied and properly maintained, and to limit their use to their intended purpose. Improper selection, installation or use may result in personal injury or property damage.

COMPANY WITH
QUALITY SYSTEM