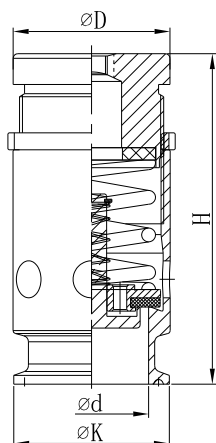
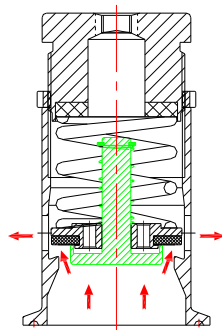


Adjustable Rebreather

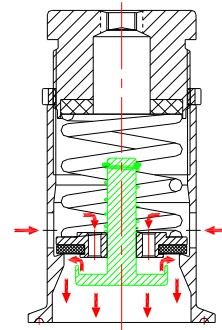


Exhaust pressure: + 0.05 to 0.3 MPa



Valve opens, when pressure inside of container is higher than setting pressure value

Vacuum: -0.005 to -0.09Mpa

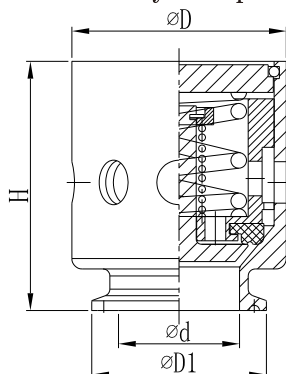


Valve closes, when vacuum inside of container is higher than setting vacuum value

Part no:SFV11

SIZE	d	D	K	H
1.5"	37	48.5	50.5	107
2"	47.5	48.5	50.5	107
2.5"	59.5	59	64	120

Sanitary Clamped Rebreather Valve(unadjustable)



Part no:SFV12

SIZE	DN	D	D1	H
1"	22.4	62	50.5	72
1.5"	35.1	62	50.5	72
2"	47.8	62	64	72

Exhaust Valve

The automatic exhaust valve adopts a double seat valve, fitted with a free plastic ball. Plastic ball is lighter than water, according to the condition of pressure to close the valve seat. This valve is mounted vertically in a pipeline or container top or installed in the pump inlet, on-demand air removal

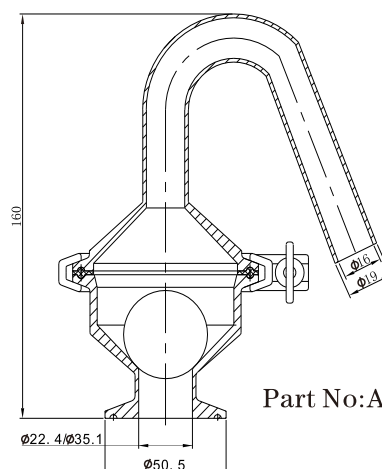


Material

- ◆ Valve Body: SS 304
- ◆ Valve ball: Polypropylene
- ◆ Sealing: EPDM
- ◆ Finish: Ra < 0.8 μm

Technical Data

- ◆ OD: Dia 19mm
- ◆ Maximum pressure: 1.0 MPa
- ◆ Maximum temperature: 90 °C (because the valve ball is a plastic ball)
- ◆ Valve ball density: 0.906 kg/dm³



Part No: ARV01